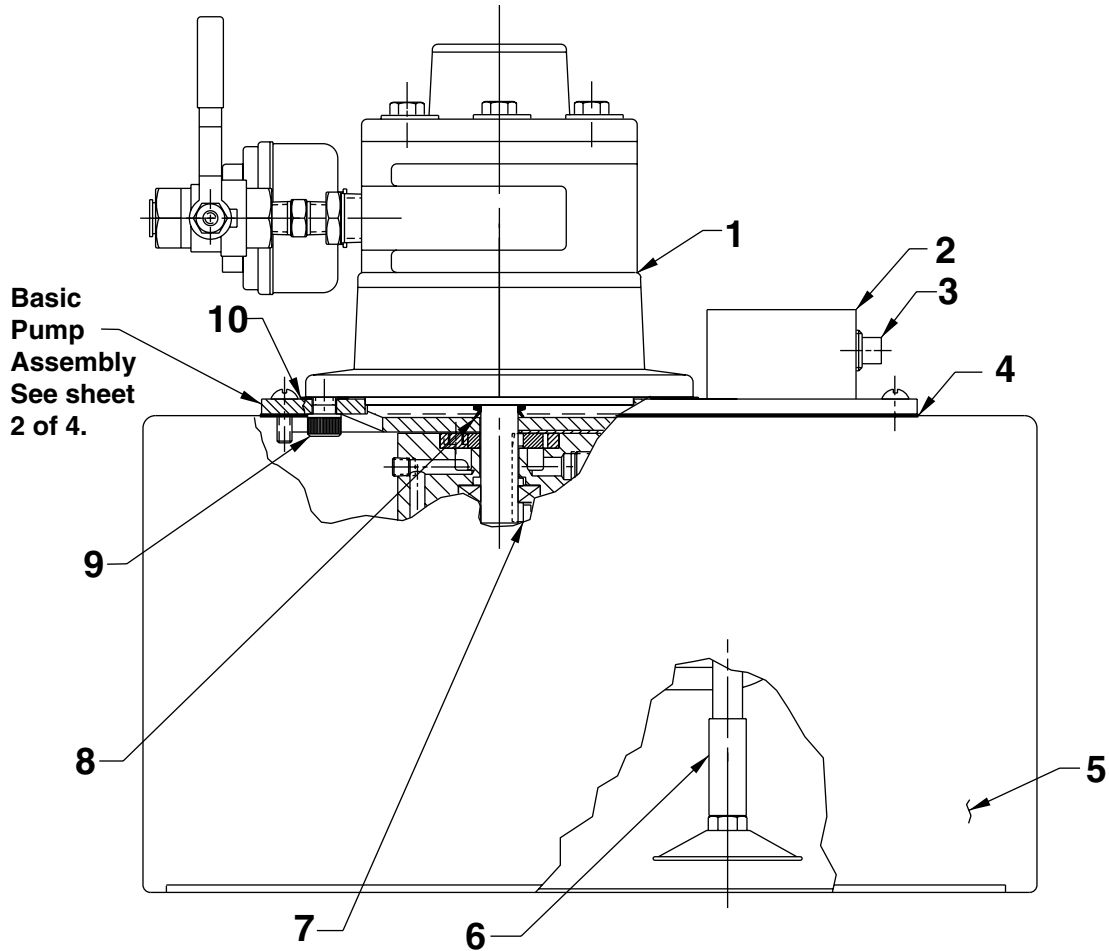


AIR HYDRAULIC PUMP SIDE VIEW



Item No.	Part No.	No. Req'd	Description
1	*14717	1	Air Motor (3 H.P.)
2	9626	1	Manifold (See Form No. 100605)
3	11127	2	Plug Fitting (3/8 NPTF)
4	40164	1	Reservoir Gasket
5	50051OR9	1	Reservoir
6	306051	1	Extension Intake Tube
7	214097	1	Key

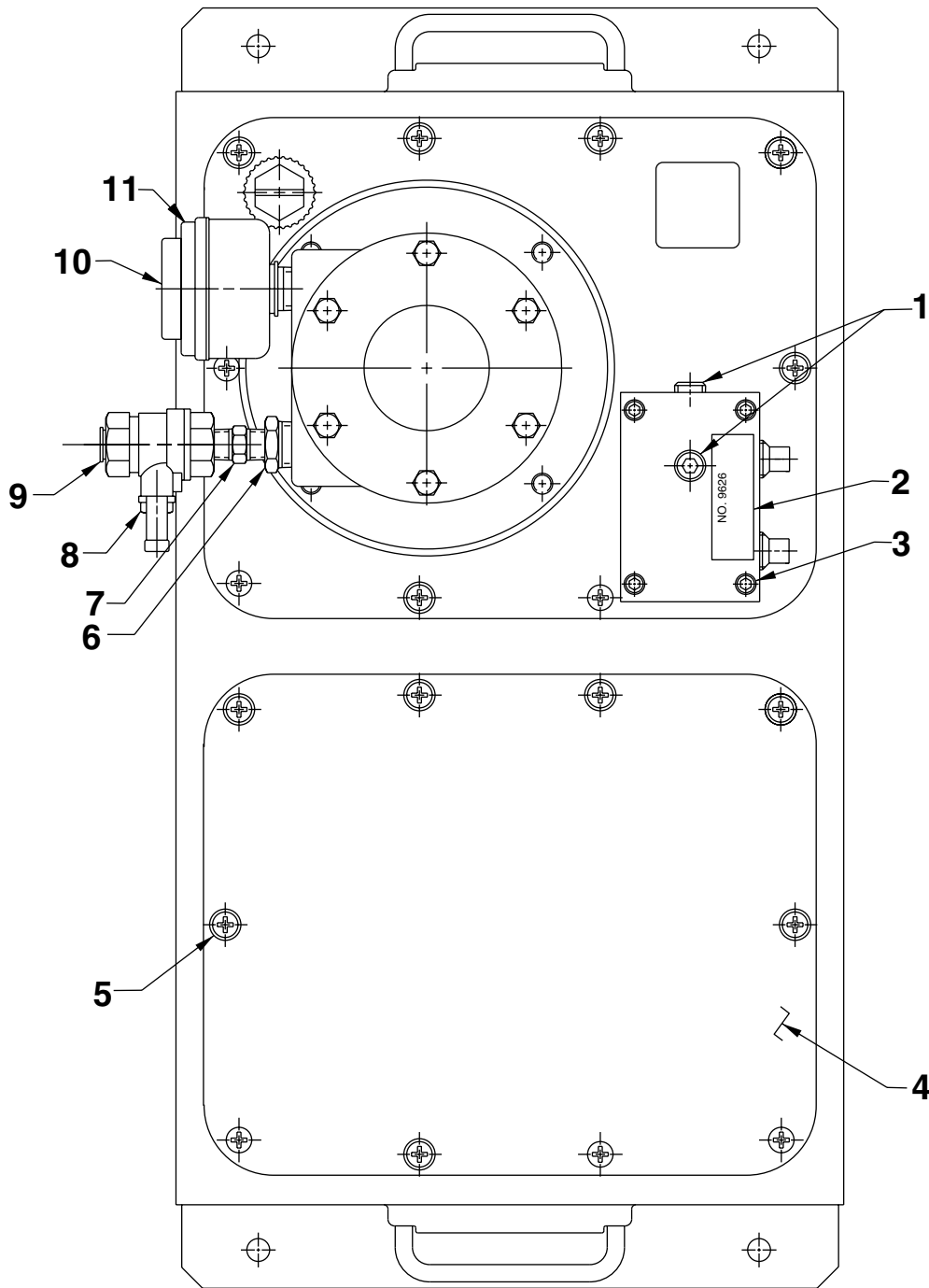
Item No.	Part No.	No. Req'd	Description
8	213674	1	V-ring (Nitrile)
	215438	1	V-ring (Viton)
	251291	1	V-ring (EPR)
9	15187	4	Soc. Hd. Cap Screw (3/8-16 UNC X 5/8 Lg.; Torque to 90/100 in. lbs.)
10	307425	1	Motor Base Gasket

* For motor repair kit, order number 252100.

Sheet No. 1 of 4

Rev. Date: 4 Nov. 1996

TOP VIEW

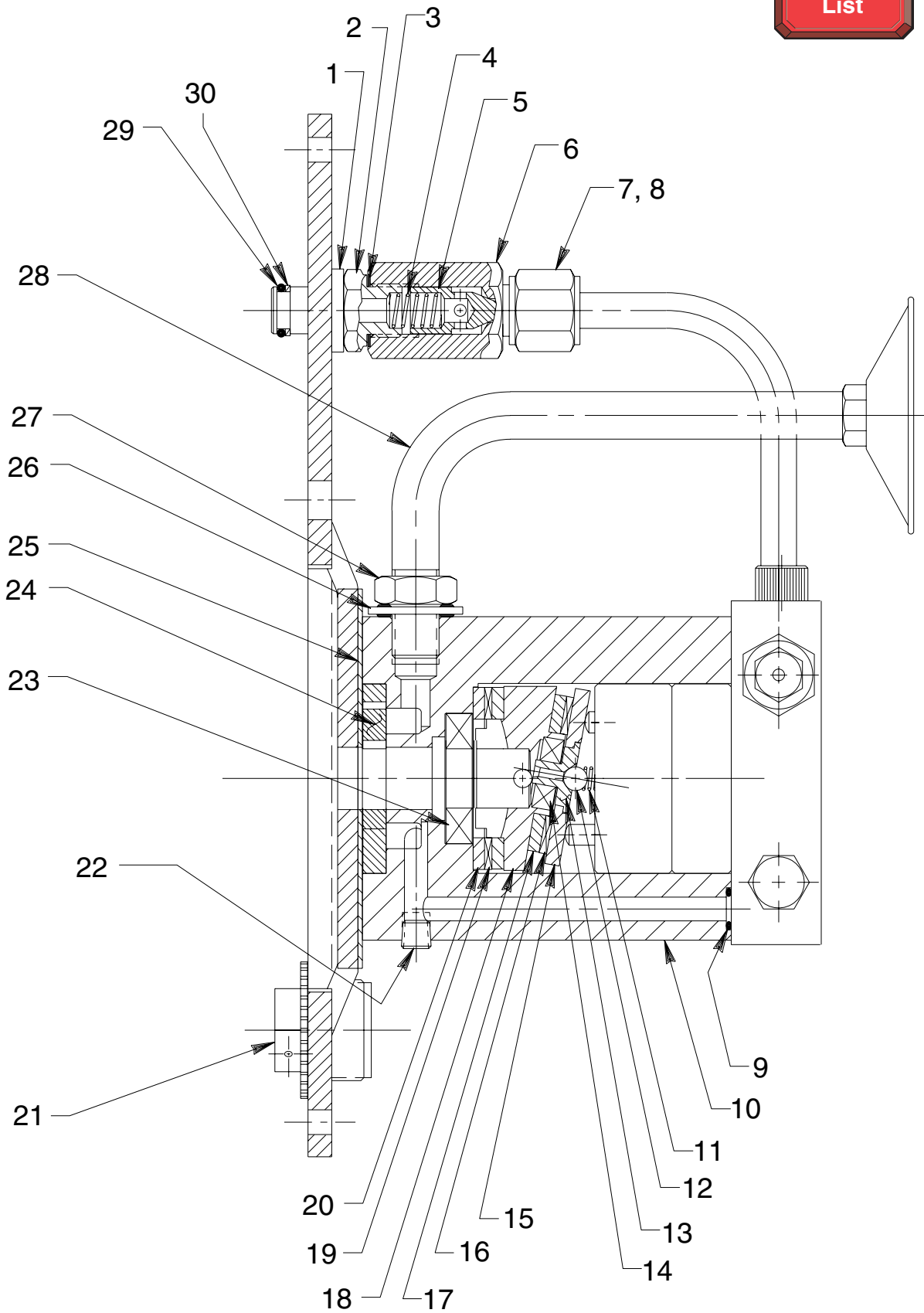


Item No.	Part No.	No. Req'd	Description
1	10479	2	Plug Fitting (1/4 NPTF)
2	211167	1	Manifold Decal
3	10022	4	Screw (1/4-20 X 1-1/2" Lg.)
4	10677	1	Straight Fitting
5	10177	10	Rd. Hd. Machine Screw (1/4-20 UNC X 3/4 Lg.)
6	10677	1	Fitting

Item No.	Part No.	No. Req'd	Description
7	10672	1	Nipple
8	211629	1	Valve
9	14794	1	Plug
10	205505	1	Deflector (Point exhaust opening down.)
11	13966	1	Muffler

BASIC PUMP ASSEMBLY

To Parts
List



Parts List, Form No. 101738, Back sheet 2 of 4

Item No.	Part No.	No. Req'd	Description
1	21484	1	Washer
2	214762	1	Valve Connector (Note: The torque between the valve connector [Item #2] and the cover plate [Item #2 on sheet 3 of 4] shall be 30 ft. lbs. max. The torque between the valve connector [Item #2] and the check valve body [Item #6] shall be 40-50 ft. lbs.)
3	10261	1	Copper Washer (3/4 X 19/32 X 1/32)
4	10425	1	Compression Spring (3/8 O.D. X 3/4 Lg.)
5	20771	1	Poppet
6	201879	1	Check Valve Body
7	10430	1	Tube Sleeve
8	10431	1	Tube Nut
9	10267	1	O-ring (7/16 X 5/16 X 1/16; Nitrile)
	18974	1	O-ring (7/16 X 5/16 X 1/16; Viton)
	13472	1	O-ring (7/16 X 5/16 X 1/16; EPR)
10	52883	1	Body Pump
11	16320	1	Compression Spring (1/4 O.D. X 3/4 Lg.)
12	10375	1	Ball (1/4 Dia.)
13	23547	1	Top Plate Bearing
14	11814	1	Ball Bearing
15	23548	1	Top Plate
16	15431	1	Needle Thrust Bearing
17	15432	1	Needle Thrust Race Bearing
18	35271	1	Angle Plate
19	11228	1	Needle Thrust Bearing
20	11227	1	Needle Thrust Race Bearing
21	213706	1	Filler Cap
22	11084	1	Pipe Plug (1/16 NPTF)
23	15695	1	Ball Bearing
24	15693	1	Gerotor Set
25	307296	1	Wear Plate
26	213709	1	Seal Washer (Nitrile)
	215633	1	Seal Washer (Viton)
	215634	1	Seal Washer (EPR)
27	10390	1	Hex Jam Nut
28	213686	1	Intake Tube
29	10268	1	O-ring (1/2 X 3/8 X 1/16; Nitrile)
	19775	1	O-ring (1/2 X 3/8 X 1/16; Viton)
	17716	1	O-ring (1/2 X 3/8 X 1/16; EPR)
30	11863	1	Teflon Backup Washer (1/2 X 3/8 X 1/16)

} Turn on - Do not push on



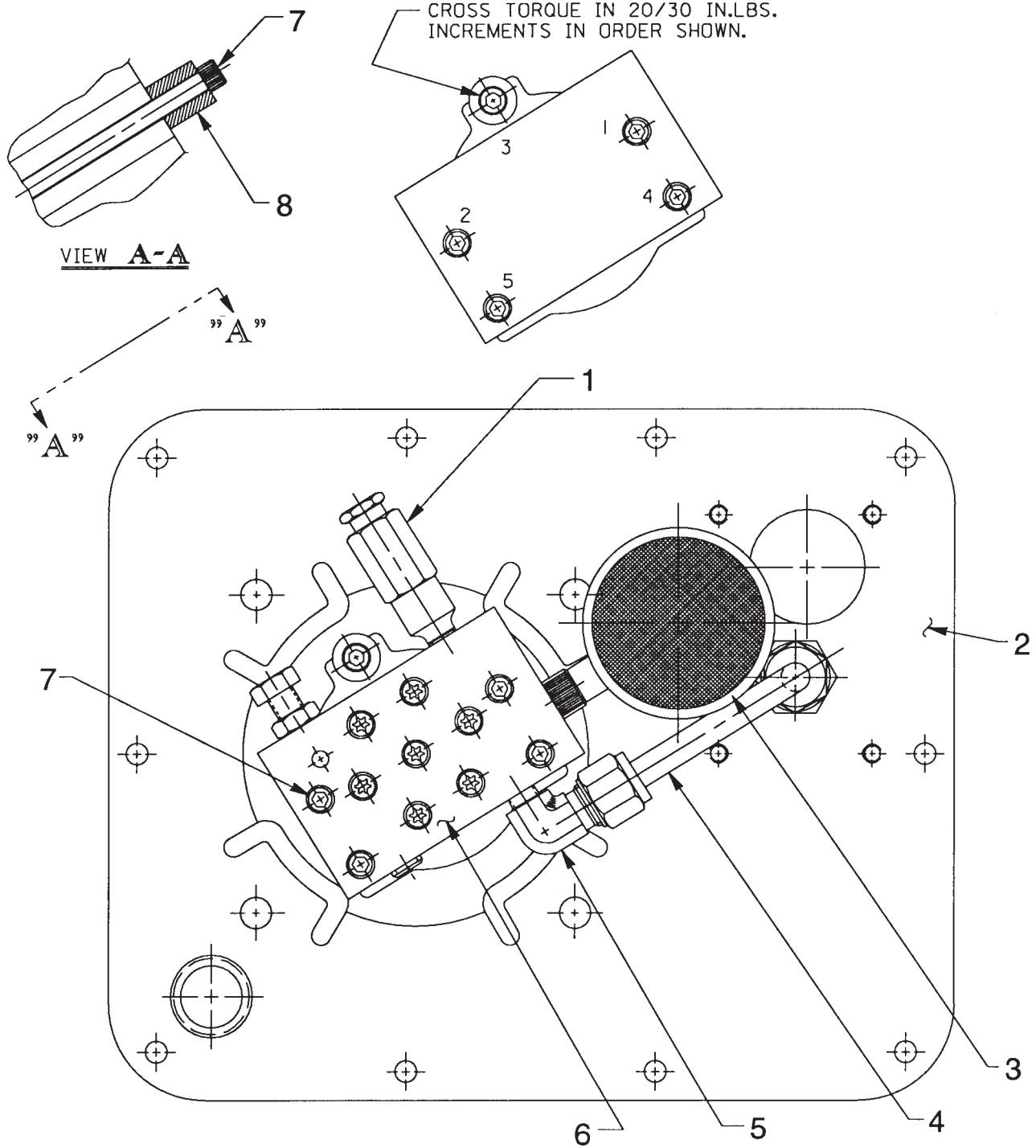
Refer to any operating instructions included with this product for detailed information about operation, testing, disassembly, reassembly, and preventive maintenance.

Items found in this parts list have been carefully tested and selected. **Therefore: Use only genuine Power Team replacement parts!**

Additional questions can be directed to our Technical Services Department.

BASIC PUMP ASSEMBLY

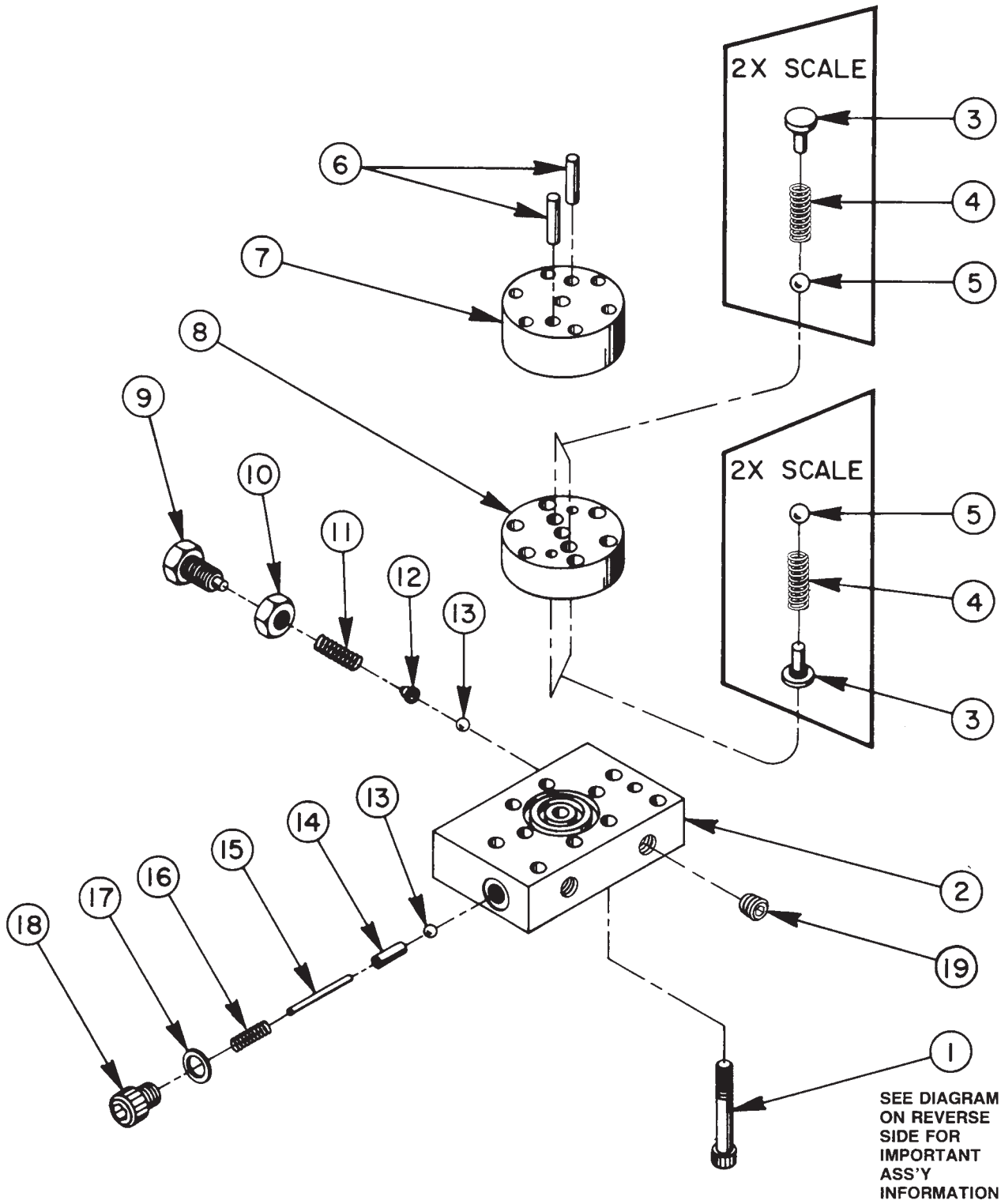
BOTTOM VIEW



Item No.	Part No.	No. Req'd	Description
1	21278-48	1	Relief Valve (Set at 4,900/5,300 PSI)
2	61566BK2	1	Reservoir Cover
3	29682	1	Filter Strainer
4	307459	1	Oil Line Tube
5	10475	1	90° Connector

Item No.	Part No.	No. Req'd	Description
6	36922	1	High Pressure Pump Assembly (See back of sheet 3 of 4)
7	15642	5	Soc. Hd. Cap Screw (1/4-20 UNC x 1/2 Lg.; Torque to 55/65 in. lbs.)
8	214720	1	Spacer

HIGH PRESSURE PUMP ASSEMBLY

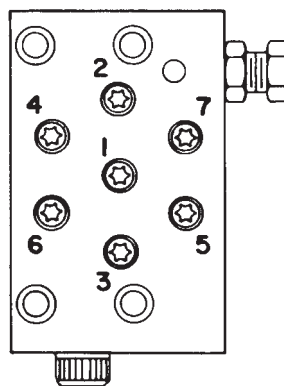


Item No.	Part No.	No. Req'd	Description
1	*16747	7	Torx Soc. Low Hd. Cap Screw (1/4-28 UNF X 1-3/4 Lg.; See diagram below)
2	*36912	1	Pump End Plate
3	*24549	4	Valve Guide
4	*10445	4	Compression Spring (5/32 O.D. X 3/4 Lg.)
5	*12223	4	Ball (3/16 Dia.)
6	*20775	2	Piston
7	*41006	1	Pump Barrel
8	*41007	1	Valve Head
9	200797	1	Adjusting Screw
10	10386	1	Hex Jam Nut (3/8-24 UNF)
11	15691	1	Compression Spring (1/4 O.D. X 5/8 Lg.)
12	200796	1	Spring & Ball Adapter
13	10375	2	Ball (1/4 Dia.)
14	201998	1	Sleeve
15	12571	1	Roll Pin (1/8 Dia. X 1-3/8 Lg.)
16	14431	1	Compression Spring (3/16 O.D. X 3/4 Lg.)
17	12042	1	Copper Washer (9/16 X 3/8 X 1/32)
18	29690	1	Cap Screw (Torque to 180 in. lbs.)
19	10427	1	Hex Female Drive Plug (1/8 NPTF)



Consult factory when replacing items marked with an asterisk (*).

BOLT TIGHTENING SEQUENCE



NOTE: Assemble in sequence shown. Lubricate under head and on threads. Torque to 170 in. lbs.

HYDRAULIC SCHEMATIC

