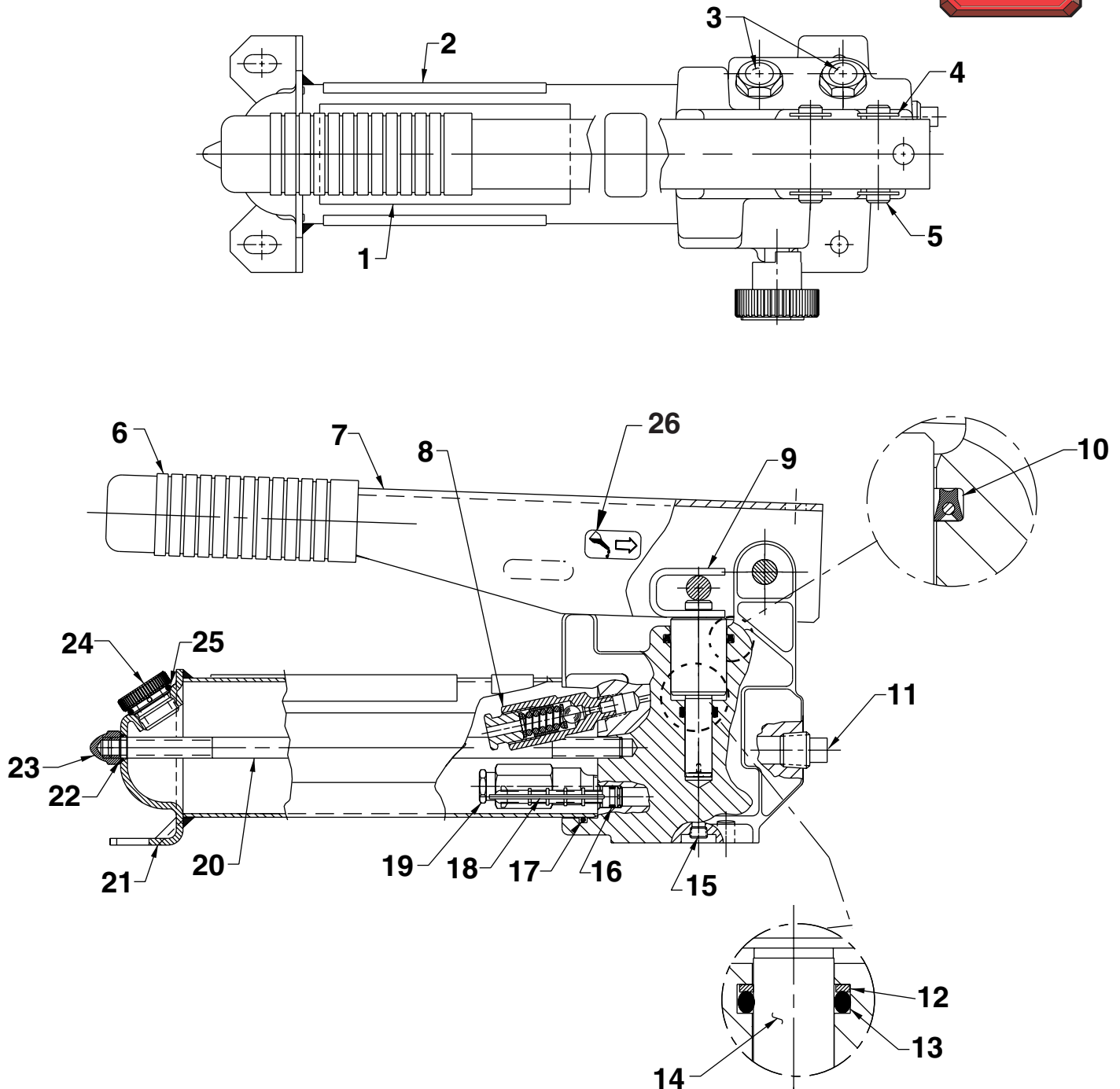


MODEL C TWO-SPEED HYDRAULIC HAND PUMP Max. Capacity: 10,000 PSI (700 Bar)

To Parts
List



Parts List, Form No. 101756, Back sheet 1 of 2

Item No.	Part No.	No. Req'd	Description
1	305977	1	Warning Decal
2	202173	2	Trade Name Decal
3	215907	2	Instruction Decal
4	211743	4	Retaining Ring (NOTE: Expand the retaining ring to .440 dia. max. during installation)
5	211742	2	Dowel Pin
6	211769	1	Handle Grip
7	469530R9	1	Handle
8	48011-2	1	Relief Valve Assembly
9	211470	1	Piston Clip
10	250233	1	U-cup Packing
11	11127	1	Pressure Plug (3/8 NPTF)
12	250611	1	O-ring Backup Washer (1/2 x 3/8 x .049; Assemble with concave surface towards O-ring)
13	15279	1	O-ring (1/2 X 3/8 X 1/16)
14	421413	1	Two-speed Piston
15	11084	1	Plug (1/16 NPTF; Apply Loctite and assemble below bottom surface of pump body.)
16	12557	1	O-ring (11/32 X 7/32 X 1/16)
17	211495	1	O-ring (2-11/16 X 2-1/2 X 3/32)
18	215075	1	Filter
19	21278	1	Relief Valve Assembly (Set at 10,100 to 10,700 PSI)
20	252326	1	Tie Rod
21	421394	1	Reservoir
22	13943	1	O-ring (1/2 X 3/8 X 1/16; Urethane)
23	10842	1	Hex Cap Nut (3/8-16; Torque 90/110 in. lbs. Fully engage acorn nut onto tie rod before torquing to body.)
24	351245	1	Filler Cap
25	10274	1	O-ring (.87 x .68; Nitrile)
26	253234	1	Decal (Oil Pivot Pins)



Note: Shaded areas reflect last revision(s) made to this form.

