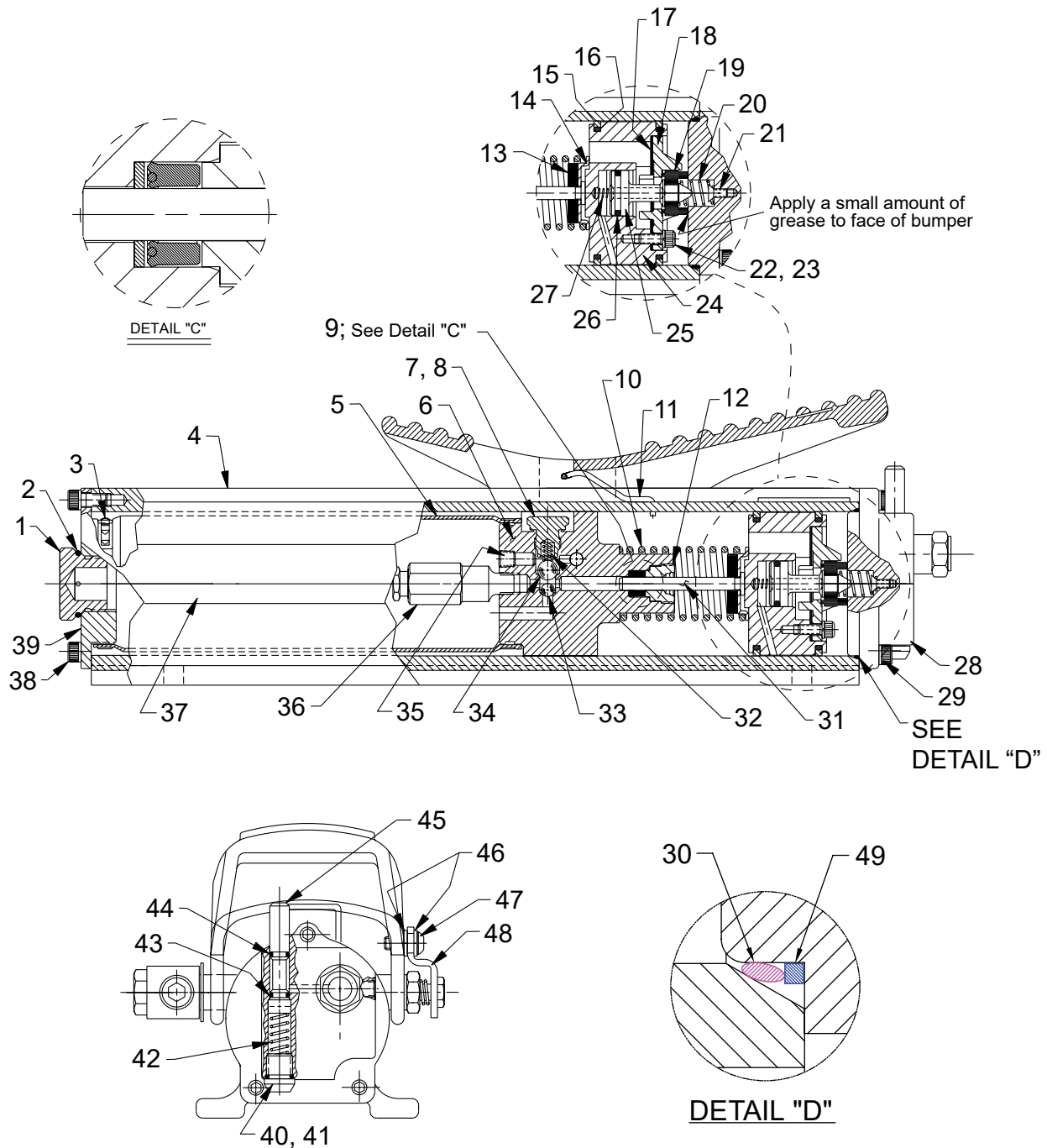


MODEL B
AIR/HYDRAULIC PUMP (TUBE STYLE)
FOOT PEDAL STYLE SHOWN



PART LIST

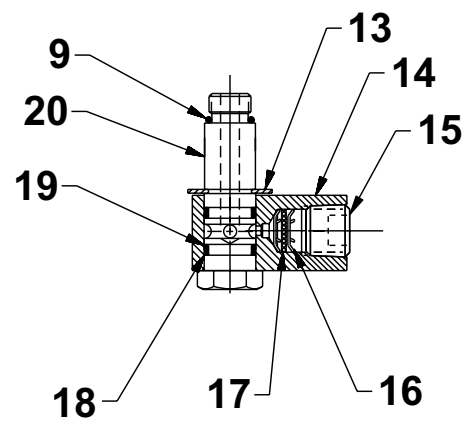
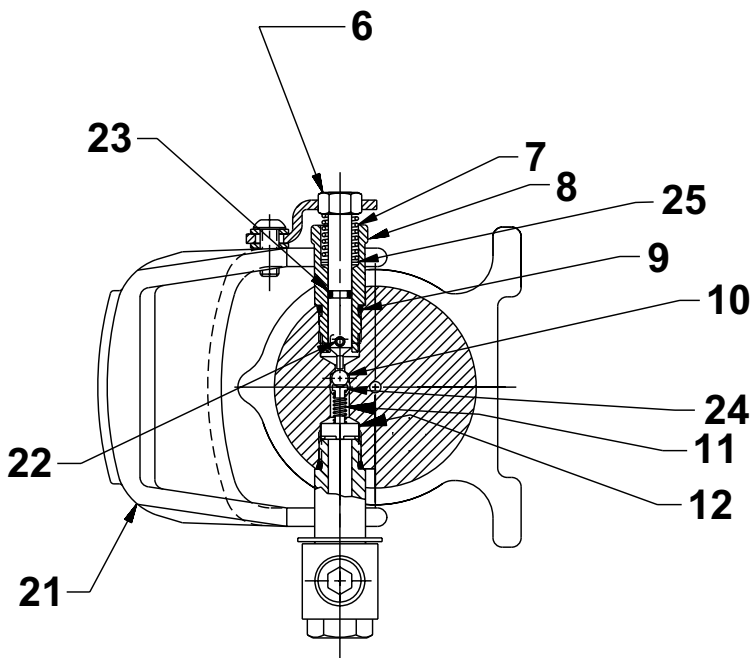
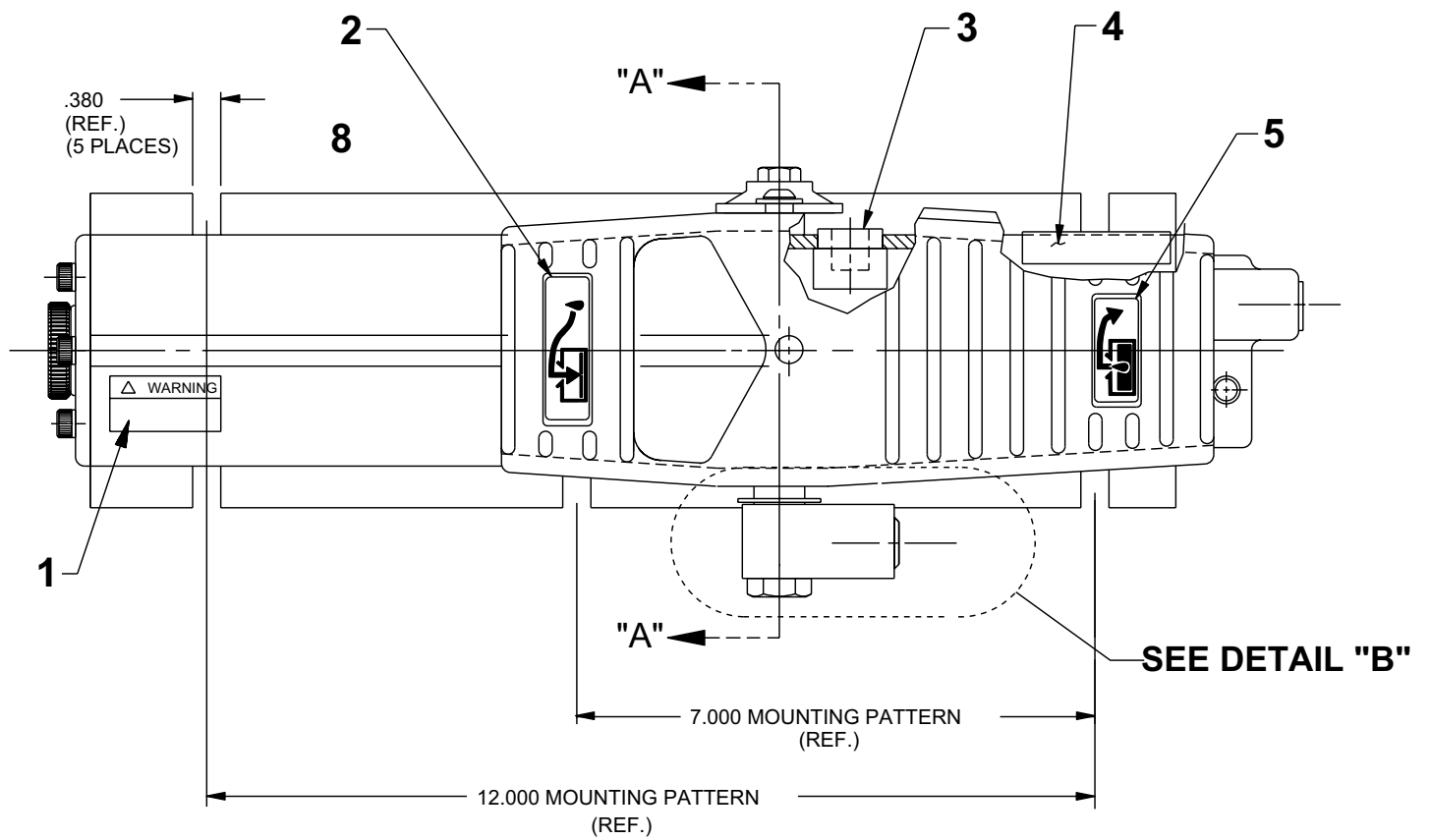
ITEM	PART NO.	DESCRIPTION	QTY.
1	252298	FILLER PLUG	1
2	*16684	O-RING (1.18 X 1.00)	1
3	*252303	CLAMP	2
4	65471	PUMP HOUSING (For PA9, PA9-35, PA9-PRO & PA9-CRN)	1
	65469	PUMP HOUSING (For PA9H)	1
5	*421332-8250	BLADDER (Cut to 8.280 / 8.220 Lg.)	0.50
6	65308	PUMP BODY	1
7	351394	VALVE SCREW (1/2-20 X 25/32 Lg.; Torque to 350/370 in. lbs.)	1
8	*14874	COPPER WASHER (.70 X .50)	1
9	*13934	U-CUP & BACKUP	1
10	*13938	SPRING (1.45 O.D. X 4.4)	1
11	351426	SPRING CLIP	1
12	*304295	RETAINER (Note: See "Instructions for retainer replacement" on page 7.)	1
13	*203143	BUMPER	1
14	210994	SPRING GUIDE	1
15	*14265	PISTON RING (2.77 X 2.54)	2
16	*252348	O-RING (2.31 X 2.12)	2
17	*28239	GASKET	1
18	33822	PISTON END PLATE CASTING	1
19	*28183	PISTON POPPET	1
20	*205679	SPRING (.49 O.D. X .92)	1
21	205674	FLAT HD. SCREW (8-32 X 3/8; Torque to 12/18 in. lbs.)	1
22	211054	SOC. HD. SCREW (10-24 X 1/2; Torque to 50/55 in. lbs.)	3
23	10241	LOCKWASHER (.33 X .20)	3
24	52390	PISTON BODY	1
25	305475	EXHAUST VALVE STEM	1
26	*211052	O-RING (.90 X .70)	1
27	*12692	SPRING (.18 O.D. X 1.70)	1
28	58901	REAR HEAD	1
29	10008	CAP SCREW (1/4-20 X 3/4 Lg.; Torque to 120/140 in. lbs.)	3
30	*252349	O-RING (2.75 X 2.65)	1
31	28226	PISTON (1/4")	1
32	*10444	SPRING (.25 O.D. X .41)	1
33	*10375	STEEL BALL (1/4" DIA.; Seat at assembly)	1
34	*10378	STEEL BALL (3/8" DIA.; Seat at assembly)	1
35	11084	PLUG FITTING (1/16 NPTF)	1
36	21278	RELIEF VALVE (Set at 10,100 TO 10,700 PSI)	1
	21278-35	RELIEF VALVE (Set at 3,500/3,800 PSI; For PA9-35)	1
	21278-40	RELIEF VALVE (Set at 4,100/4,500 PSI; For PA9-CRN)	1

Parts List Continued

ITEM	PART NO.	DESCRIPTION	QTY.
37	351341	TRADE NAME DECAL	2
38	10807	CAP SCREW (1/4-20 X 1/2 Lg.; Torque to 60/80 in. lbs.)	3
39	351409	END FILLER CAP	1
40	250258	SCREW (1/2-13 X 1/2 Lg.; Note: Apply loctite 277 or equiv. cure one hour before testing.)	1
41	15279	O-RING (.50 X .37 Nitrile)	1
42	*253479	SPRING (.36 O.D. X 1.0)	1
43	*12522	O-RING (.37 X .25; Urethane; Note: Apply a small amount of grease at assembly.)	1
44	12557	O-RING (.34 X .21; NOTE: Apply a small amount of grease at assembly.)	1
45	351423	VALVE STEM	1
46	12719	PLAIN WASHER (.63 X .29; For PA9, PA9-35, PA9-PRO & PA9-CRN)	2
47	15911	BUTTON HD. SCREW (1/4-20 X 1/2; For PA9, PA9-35, PA9-PRO & PA9-CRN)	1
48	351371	RELEASE CLIP (Note: Adjust release clip so that hydraulic pressure starts to release when pedal is lifted off the top of the valve stem .150/.250 [For PA9, PA9-PRO & PA9-CRN] OR .100/.300 [For PA9-35].)	1
49	*2008093	WASHER, BKUP (2.50 IN X 2.65 X 0.045 R)	1

Part numbers marked with an asterisk (*) are contained in repair kit no. 300949.

Parts List Continued



DETAIL "B"

Parts List Continued

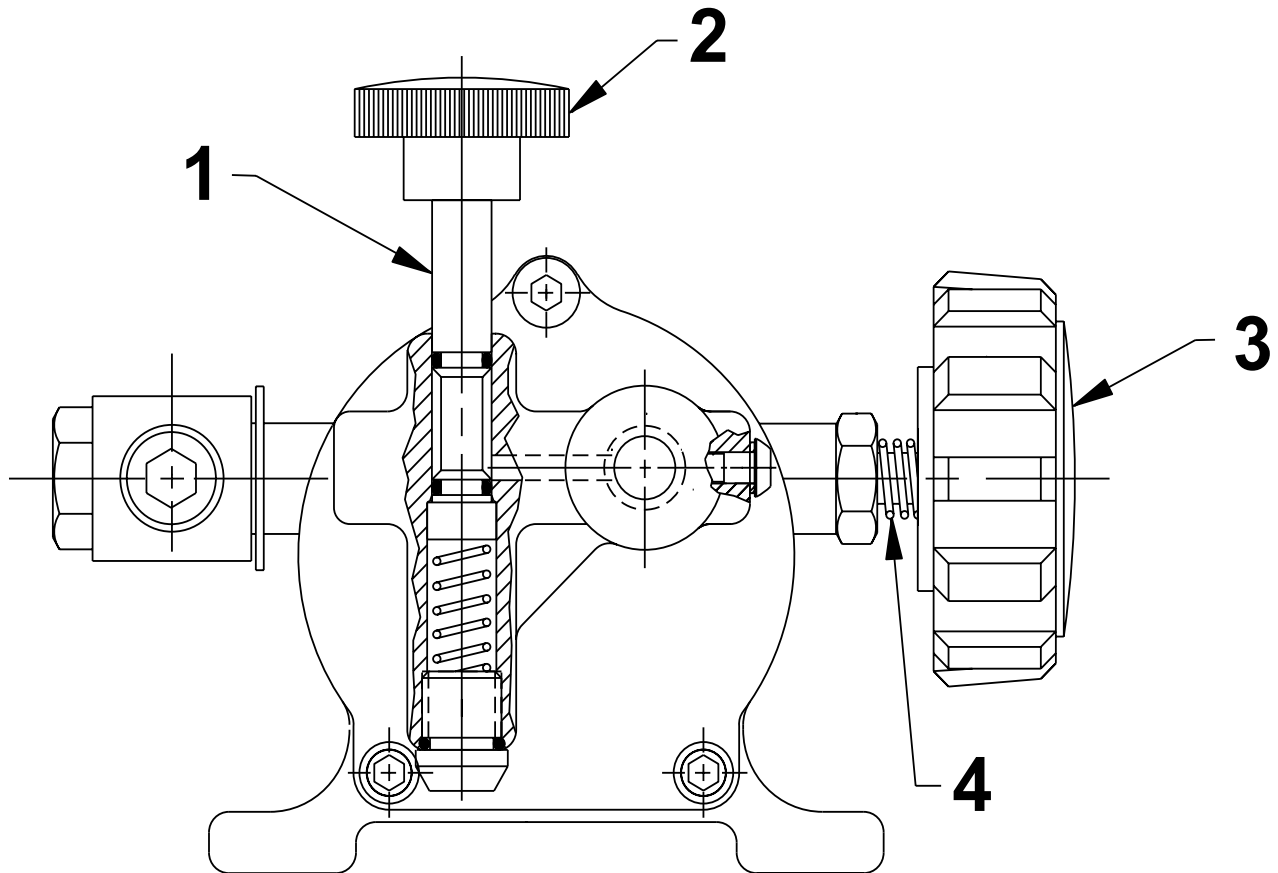
ITEM	PART NO.	DESCRIPTION	QTY.
1	222142	WARNING DECAL	1
2	251758	INSTRUCTION DECAL (Release)	1
3	*252300	MUFFLER	2
4	14350	WARNING DECAL	1
5	251757	INSTRUCTION DECAL (Pump)	1
6	252526	RELEASE PIN (Release stem must move freely through clip when assembled.)	1
7	*253223	SPRING (.49 O.D. X 1.0)	1
8	351413	PIVOT CAM (Torque to 280/300 in. lbs.)	1
9	*10300	O-RING (.62 X .46)	2
10	*10374	STEEL BALL (7/32" DIA.; Seat at assembly)	1
11	*14282	SPRING (.25 O.D. X .68)	1
12	252445	BUSHING	1
13	11902	EXTERNAL RETAINING RING	1
14	351385	SWIVEL BLOCK	1
15	16232	PLUG FITTING (3/8 NPTF)	1
16	*11088	INTERNAL RETAINING RING (.31 X .010)	2
17	*250638	OIL FILTER DISC	1
18	*12391	BACKUP WASHER	2
19	*11284	O-RING (.68 X .56 NITRILE)	2
20	351693	SWIVEL FITTING (Torque to 580-600 in. lbs.)	1
21	421471	MACHINE FOOT PEDAL	1
22	10796	DOWEL PIN (.13 X .50)	1
23	*10265	O-RING (.31 X .18)	1
24	252856	GUIDE, BALL	1
25	253663	WASHER	2

PARTS INCLUDED BUT NOT SHOWN

	253293	DECAL, RAISE & LOWER (For PA9H only)	1
--	--------	--------------------------------------	---

Part numbers marked with an asterisk (*) are contained in repair kit no. 300949.

KNOB COMPONENTS FOR PA9H ONLY



ITEM	PART NO.	DESCRIPTION	QTY.
1	351345	VALVE STEM	1
2	351346	KNOB	1
3	351368	KNOB	1
4	252535	RELEASE PIN	1

INSTRUCTIONS FOR RETAINER REPLACEMENT

Your pump's retainer is locked into place by one of the two following methods. Determine which **method** was used on your pump's retainer, then follow the appropriate steps to remove the old and install and stake the new.

Method 1 - Retainer shows no sign of stake marks

1. This retainer has been locked in place with a Loctite product. To replace it, a moderate amount of heat needs to be applied to the cylinder nut (in the area of the retainer) to soften the existing Loctite allowing it to be removed.
2. Install the new retainer into the cylinder nut and torque to 80/100 in. lbs. **Note: Do not use a Loctite product this time but stake the new retainer in place according to instructions in Step 3.**
3. To lock retainer into place, use a center punch positioned in the seam between the retainer and the cylinder nut and stake the new retainer in two places approximately 180° apart.

Method 2 - Retainer has two stake marks in the seam between the retainer and the cylinder nut

1. For replacement of this retainer, the stake marks must be removed. Using a 1/8" or larger diameter drill bit, remove the existing stakes by drilling a short distance into the stake marks. Remove the retainer.
2. Install the new retainer into the cylinder nut and torque to 80/100 in. lbs.
3. To lock retainer into place, use a center punch positioned in the seam between the retainer and the cylinder nut and stake the new retainer in two places approximately 180° apart.

NOTE: Do not stake in the old stake marks.