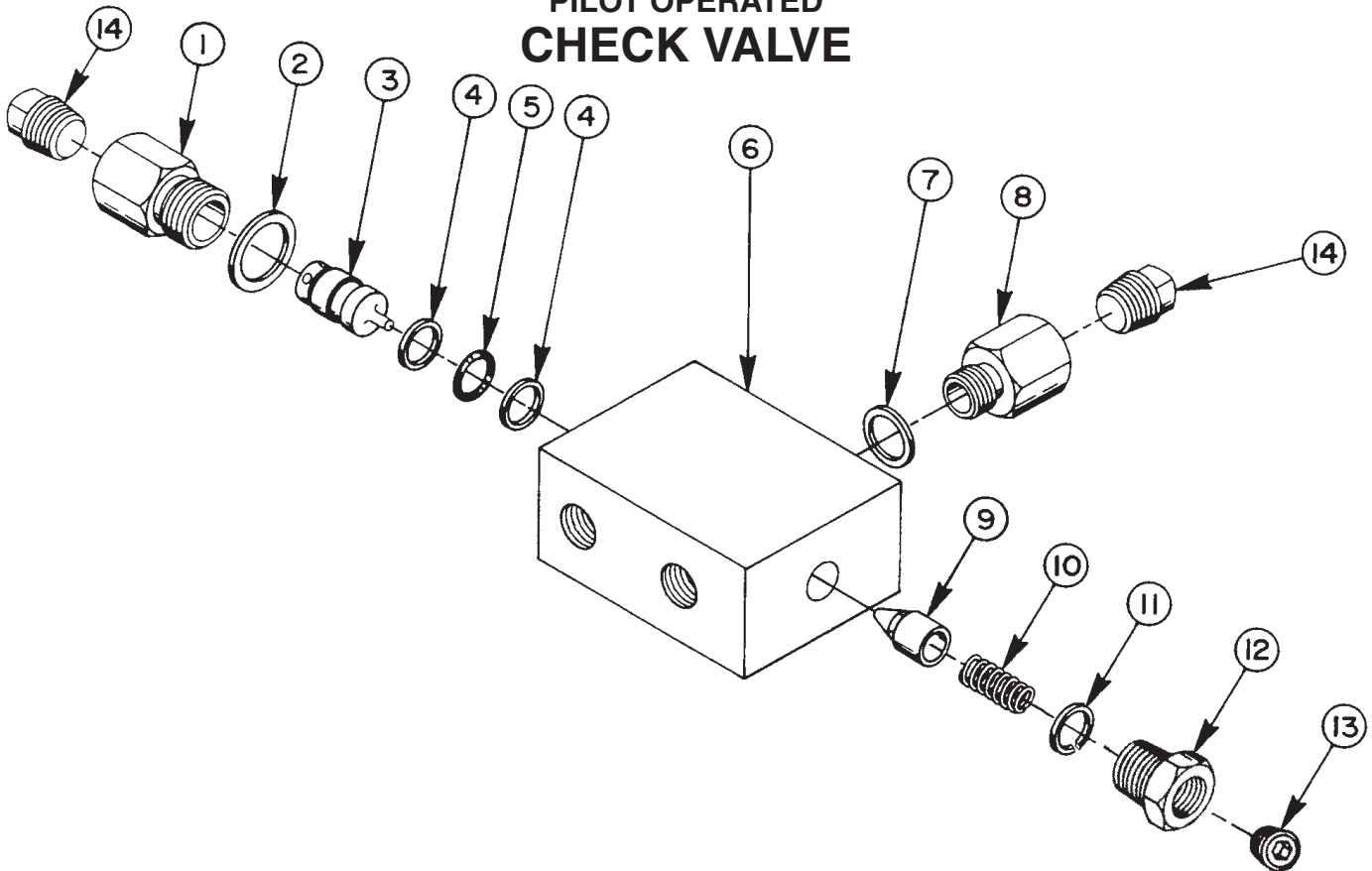


**MODEL B
 PILOT OPERATED
 CHECK VALVE**


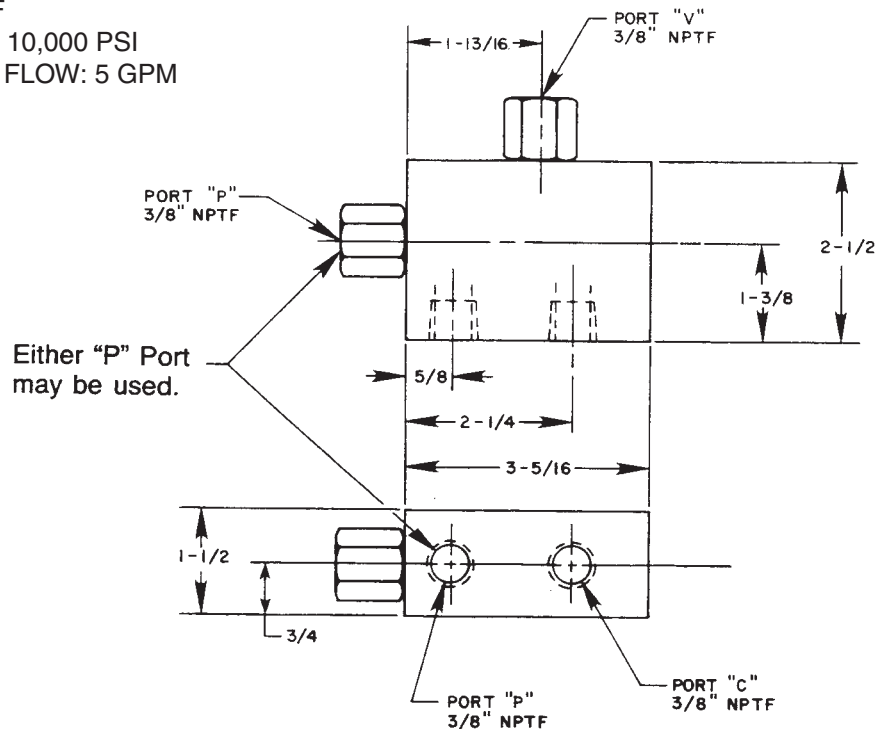
Item No.	Part No.	No. Req'd	Description
1	205956	1	Straight Fitting (Discard O-ring)
2	*10263	1	Copper Washer
3	21864	1	Valve Piston
4	12390	2	Backup Washer (5/8 x 1/2 x 1/16)
5	*10301	1	O-ring (5/8 x 1/2 x 1/16 CS)
6	65465	1	Valve Body
7	*10261	1	Soft Copper Washer
8	205955	1	Straight Fitting (Discard O-ring)
9	20771	1	Poppet
10	*10425	1	Spring
11	11088	1	Internal Retaining Ring
12	10676	1	Straight Fitting (3/8 NPTF)
13	10479	1	Pipe Plug (1/4 NPTF)
14	11127	2	Plug

Part numbers marked with an asterisk (*) are contained in Repair Kit No. 27345.

SPECIFICATIONS

This valve is intended for use with double-acting cylinders in circuits employing 3-position, 4-way tandem or open center valves without posi-check. Leakage normally associated with this type of valve when in the neutral position is eliminated . . . allowing pressure to be maintained in the cylinder. This valve is ideal for clamping operations where leakage must be avoided in order to maintain clamping pressure . . . also adaptable to special applications using other types of 4-way valves. A pressure switch and/or gauge may be attached if required.

PORT SIZES: 3/8" NPTF
 MAXIMUM PRESSURE: 10,000 PSI
 MAX. RECOMMENDED FLOW: 5 GPM



TYPICAL HYDRAULIC CIRCUITS

Double-acting cylinder with a remote mounted, pilot operated check valve. (Holds cylinder pressure when valve lever is in neutral position.)

Double-acting cylinder with remote control valve and a remote pilot operated check valve. (Holds cylinder pressure when valve lever is in neutral position.)

