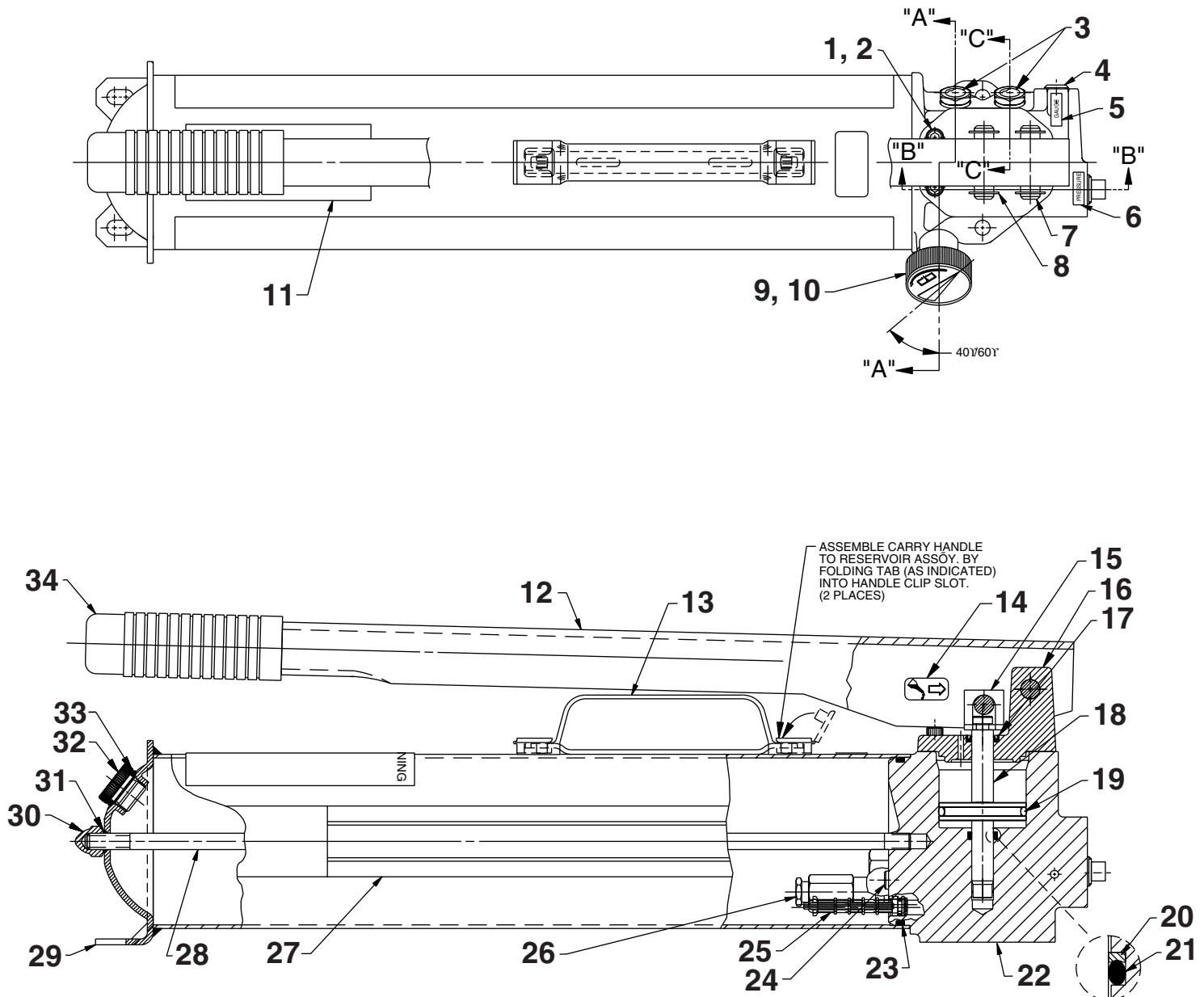


### MODEL B TWO-STAGE HYDRAULIC HAND PUMP TWO-WAY VALVE

To Parts  
List

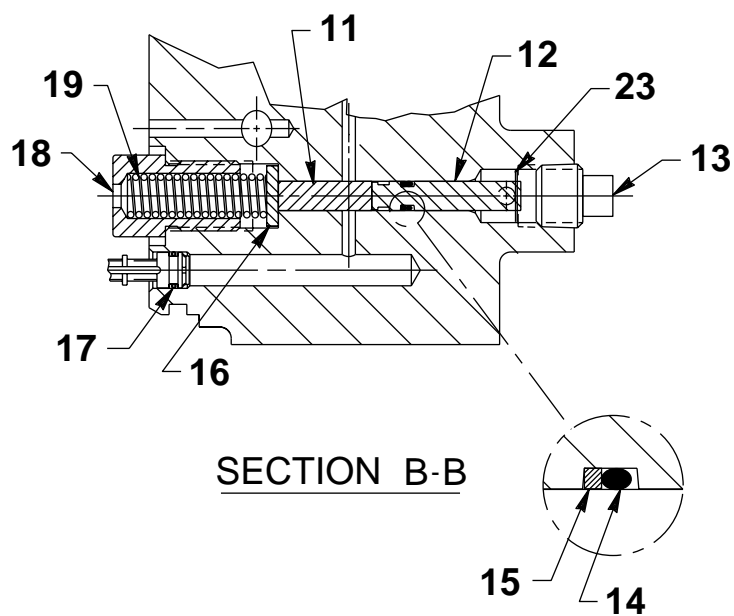
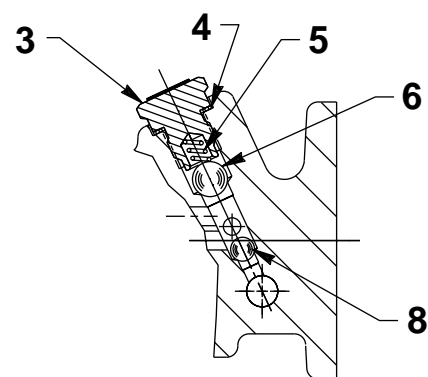
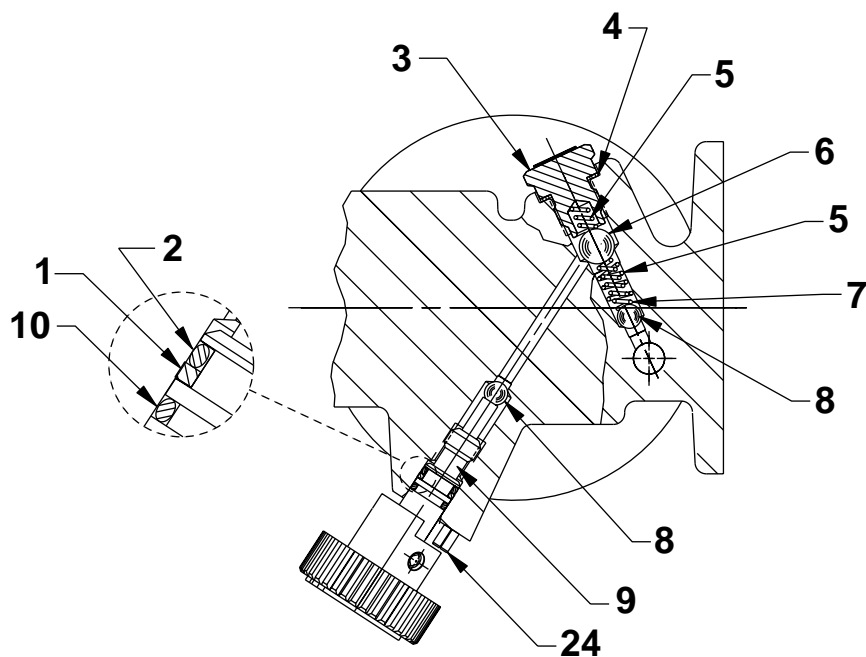


Note: Shaded areas reflect last revision(s) made to this form.

Item No.	Part No.	No. Req'd	Description
1	<b>251564</b>	4	Cap Screw (1/4-20 UNC x 3/4 Lg.; Torque to 190/210 in. lbs.)
2	<b>15823</b>	4	Lockwasher
3	<b>*215907</b>	2	Decal (DO NOT REMOVE)
4	<b>14972</b>	1	Plug (1/4 NPTF)
5	<b>215300</b>	1	Decal (GAUGE)
6	<b>215301</b>	1	Decal (PRESSURE)
7	<b>211742</b>	2	Dowel Pin
8	<b>211743</b>	4	Retaining Ring (For 7/16" shaft; Note: Expand the retaining ring to .440 dia. maximum during installation.)
9	<b>351087</b>	1	Knob (Note: Screw in valve stem until seated [bottomed out]. Then position knob as shown approx. 1/16" from casting surface. Lock in place with set screw. Torque to 50/70 in. lbs.)
10	<b>10556</b>	2	Set Screw (Torque to 50/70 in. lbs.)
11	<b>*305977</b>	1	Warning Decal
12	<b>61806OR9</b>	1	Handle
13	<b>58048</b>	1	Carry Handle
14	<b>253234</b>	1	Decal
15	<b>350923</b>	1	Piston Clip
16	<b>58031WH2</b>	1	Pump Body Cap (Iron)
17	<b>*15092</b>	1	Rod Wiper
18	<b>253268</b>	1	Piston Ass'y
19	<b>*10294</b>	1	O-ring (2.00 x 1.75 Nitrile)
20	<b>*213987</b>	1	O-ring Backup Washer (Assemble with concave surface towards o-ring)
21	<b>*10271</b>	1	O-ring (11/16 x 1/2 x 3/32)
22	<b>61804</b>	1	Pump Body (Includes pin [Item #24 on back sheet 2 of 2])
23	<b>*214693</b>	1	O-ring (3-7/8 x 3-5/8 x 1/8)
24	<b>10427</b>	1	Plug (1/8 NPTF)
25	<b>*215075</b>	1	Filter Plug
26	<b>21278</b>	1	High Pressure Relief Valve (Set at 10,100/10,700 PSI)
27	<b>360054</b>	1	Trade Name Decal
28	<b>252502</b>	1	Tie Rod
29	<b>58915</b>	1	Reservoir
30	<b>10842</b>	1	Acorn Nut (Fully engage acorn nut onto tie rod before torquing to body. Torque to 90/110 in. lbs.)
31	<b>13943</b>	1	O-ring (1/2 X 3/8 X 1/16; Urethane)
32	<b>351245</b>	1	Filler Cap
33	<b>10274</b>	1	O-ring (.87 x .68; Nitrile)
34	<b>211769</b>	1	Handle Grip

Part numbers marked with an asterisk (\*) are contained in Standard Repair Kit No. 300487.



**To Parts  
List****SECTION VIEWS**

Item No.	Part No.	No. Req'd	Description
1	<b>*15085</b>	1	O-ring Backup Washer (7/16 x 5/16 x 3/64)
2	<b>*10267</b>	1	O-ring (7/16 x 5/16 x 1/16)
3	<b>351952</b>	2	Valve Screw (Torque to 350/370 in. lbs.)
4	<b>*14874</b>	2	Copper Washer (.700 x 1/2 x 1/32 thk.)
5	<b>*10444</b>	3	Compression Spring (3/16 I.D. x 13/32 Lg.)
6	<b>*10378</b>	2	Steel Ball (3/8 Dia.)
7	<b>*211797</b>	1	Compression Spring (5/32 O.D. x 5/8 Lg.)
8	<b>*10375</b>	3	Steel Ball (1/4 dia.)
9	<b>350185</b>	1	Release Valve Screw
10	<b>14763</b>	1	O-ring (.43 x .31; Urethane)
11	<b>14588</b>	1	Dowel Pin
12	<b>252275</b>	1	Unloading Valve Piston Kit (Includes #252273 retaining ring & unloading valve piston)
13	<b>11127</b>	1	Plug (3/8 NPTF; For P159-HYUN)
14	<b>*10265</b>	1	O-ring (5/16 x 3/16 x 3/64)
15	<b>*15174</b>	1	O-ring Backup Washer (5/16 x 3/16 x 3/64)
16	<b>214692</b>	1	Unloading Valve Washer
17	<b>*12557</b>	1	O-ring (11/32 x 7/32 x 1/16)
18	<b>308430</b>	1	Spring Retainer
19	<b>214694</b>	1	Compression Spring
20	<b>305912</b>	1	Valve Adjusting Screw
21	<b>308488</b>	1	Spring Retainer
22	<b>214808</b>	1	Compression Spring (15/32 O.D. x 4-7/16 Lg.)
23	<b>252273</b>	1	Retaining Ring (Included in item #12)
24	<b>10714</b>	1	Slotted Spring Pin (Included with pump body [Item #22 on back sheet 1 of 2])



## PARTS INCLUDED BUT NOT SHOWN

<b>39911</b>	1	Rubber Hose (6')
<b>25599</b>	1	Hose Half Coupler
<b>9800</b>	1	Dust Cap

Part numbers marked with an asterisk (\*) are contained in Standard Repair Kit No. 300487.

Note: Shaded areas reflect last revision(s) made to this form.

Refer to any operating instructions included with this product for detailed information about operation, testing, disassembly, reassembly, and preventive maintenance.

Items found in this parts list have been carefully tested and selected. **Therefore: Use only genuine Power Team replacement parts!**

Additional questions can be directed to our Technical Services Department.