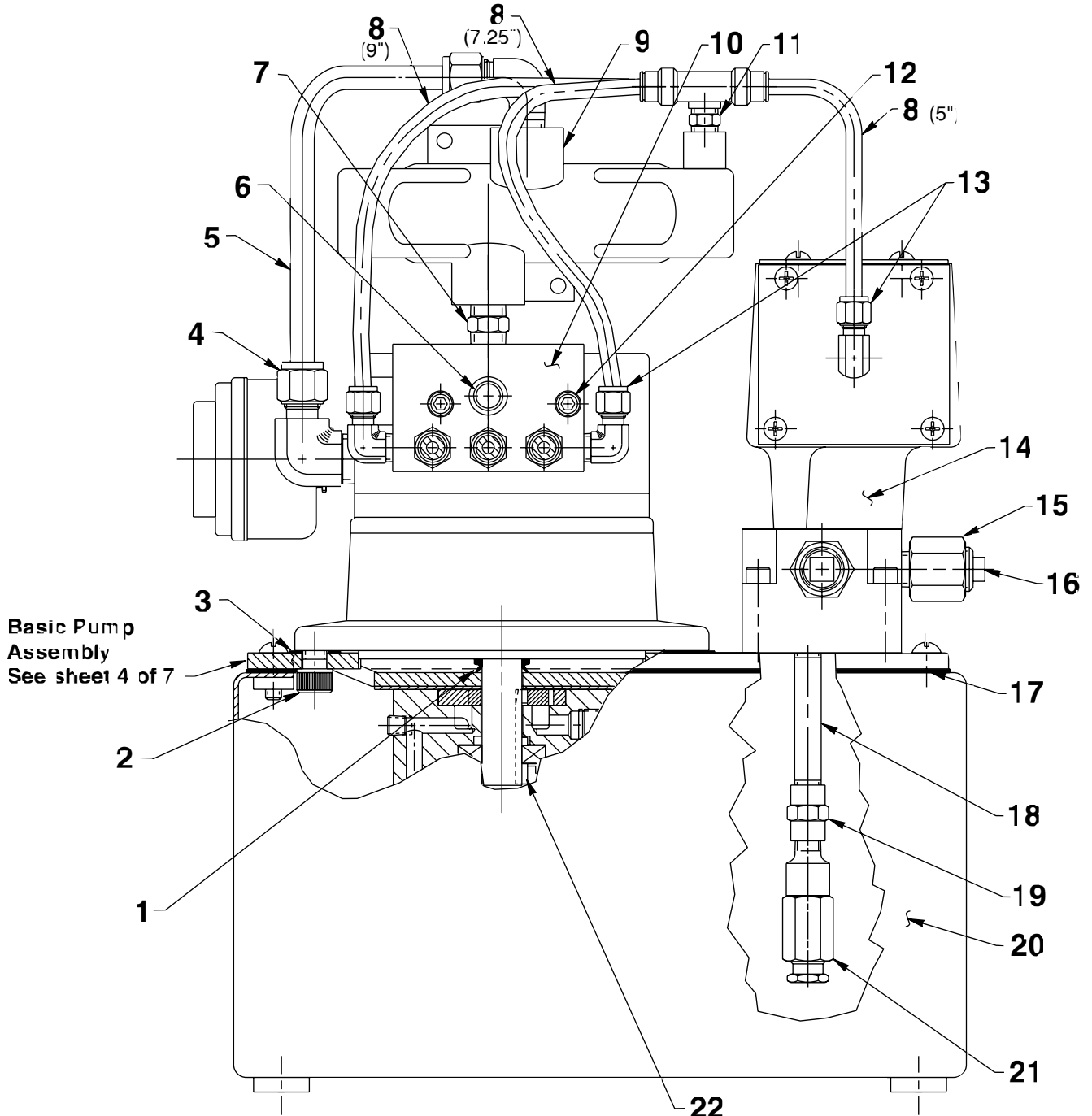


MODEL A
AIR HYDRAULIC PUMP
Max. Capacity: 10,000 PSI



Basic Pump
Assembly
See sheet 4 of 7

Parts List, Form No. 101813, Back sheet 1 of 7

Item No.	Part No.	No. Req'd	Description
1	213674	1	V-Ring
2	15187	4	Machine Screw (3/8-16 UNC X 5/8 Lg.; Torque to 90/100 in. lbs.)
3	307425	1	Motor Base Gasket
4	252520	1	90° Elbow Fitting (1/2 NPTF)
5	351447	1	Air Line Tube
6	12545	1	Plastic Cap
7	14056	1	Straight Fitting (3/8 NPTF x 1/2 NPTF)
8	15883	21.25 in.	Polyethylene Tubing
9	308608	1	Air Operated 2-Way Valve
10	351443	1	Manifold
11	11421	1	Straight Fitting (1/8 NPTF)
12	10022	2	Machine Screw (1/4-20 X 1-1/2" Lg.)
13	250463	2	90° Elbow Fitting (1/8 NPTF)
14	61086	1	4-Way Pump Mount Air Valve
15	9689	2	Connector Fitting
16	13273	2	Plug Fitting (3/8 NPTF)
17	40164	1	Reservoir Gasket
18	15456	1	Straight Fitting (1/8 NPTF)
19	18841	1	Straight Fitting (1/8 NPTF)
20	40063GY8	1	Reservoir
21	21278-10	1	Relief Valve (Set at 900/1,000 PSI)
22	215403	1	Key

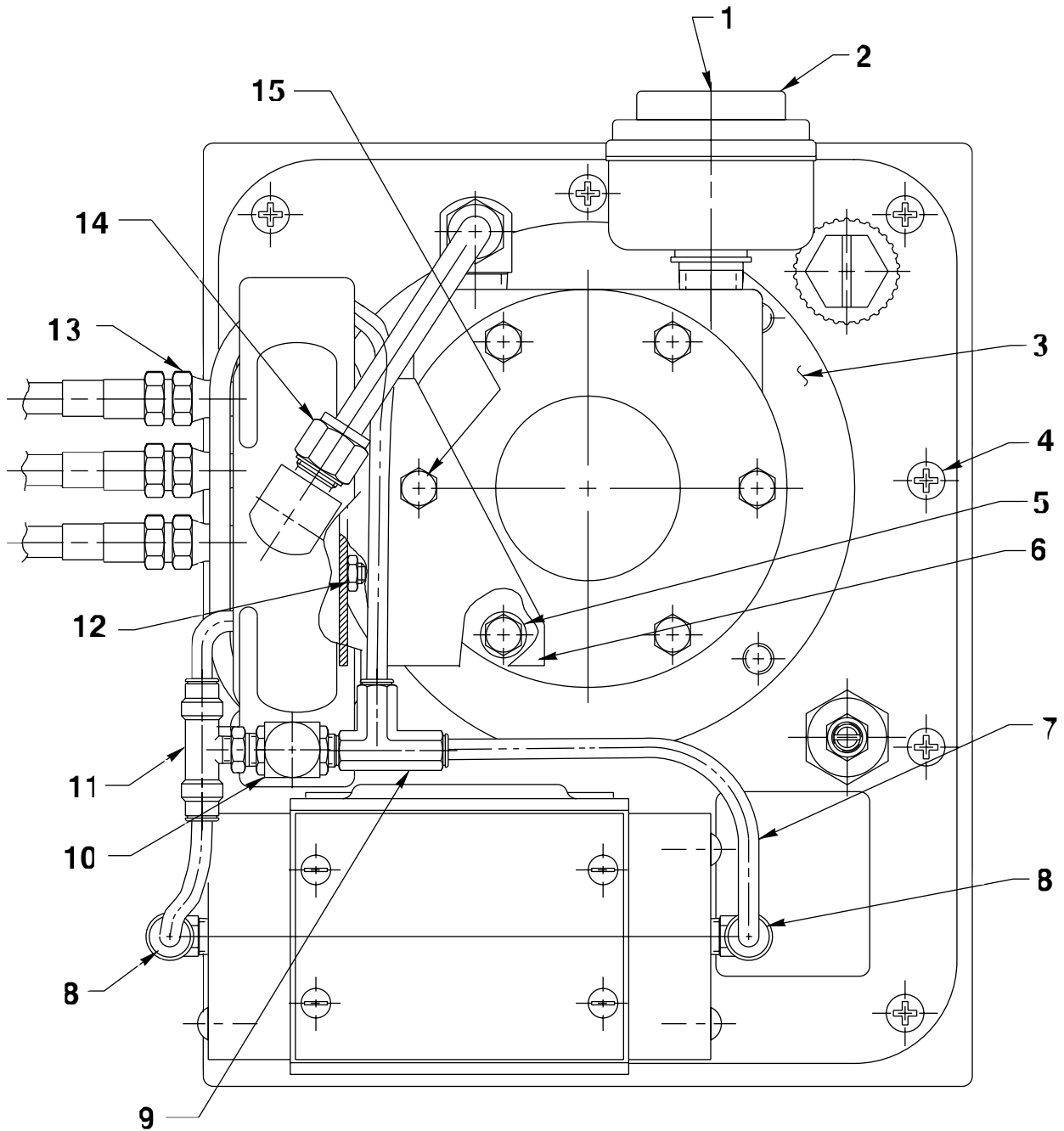
PARTS INCLUDED BUT NOT SHOWN

9596	1	Restrictor Valve (See Form #100666; For BJ150-05A)
16254	1	Elbow Fitting (For BJ150-05A)





TOP VIEW



Parts List, Form No. 101813, Back sheet 2 of 7

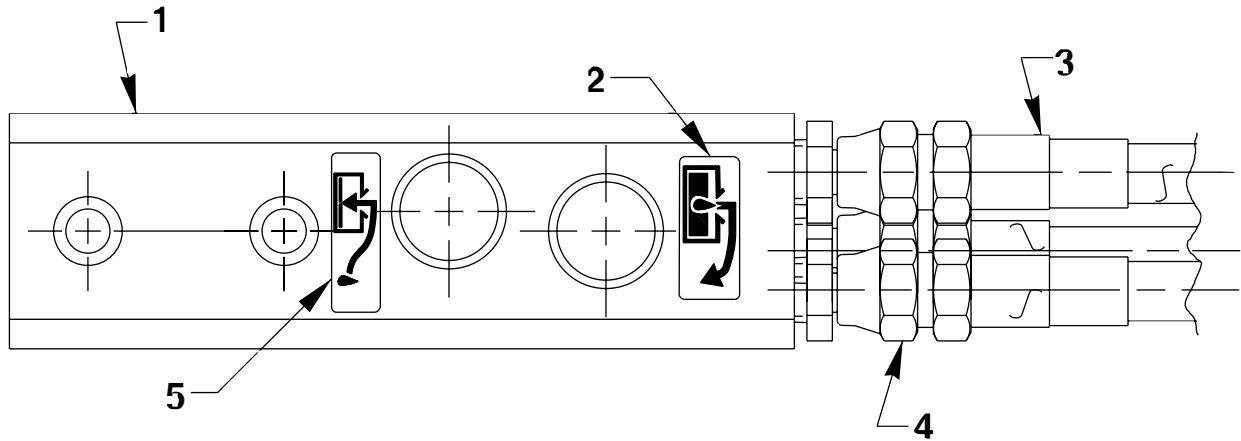
Item No.	Part No.	No. Req'd	Description
1	205505	1	Muffler Deflector (Note: Point exhaust opening down.)
2	13966	1	Muffler
3	*14717	1	Air Motor
4	10177	10	Machine Screw (1/4-20 UNC X 3/4 Lg.)
5	12719	12	Plain Washer (For 1/4 Bolt)
6	308675	1	Mounting Bracket
7	15883	7 in.	Polyethylene Tubing
8	250463	2	90° Elbow Fitting (1/8 NPTF)
9	214342	1	Tee Fitting (1/4 NPTF)
10	212405	1	Check Valve (1,000 PSI)
11	250741	1	Tee Fitting (1/4 Tube)
12	10199	2	Hex Nut (1/4-20)
13	208218	3	Straight Fitting (1/8 NPTF)
14	252520	1	90° Elbow Fitting (1/2 NPTF)
15	10014	2	Cap Screw (1/4-28 UNF X 1" Lg.)



*For air motor repair kit, order number 252100.

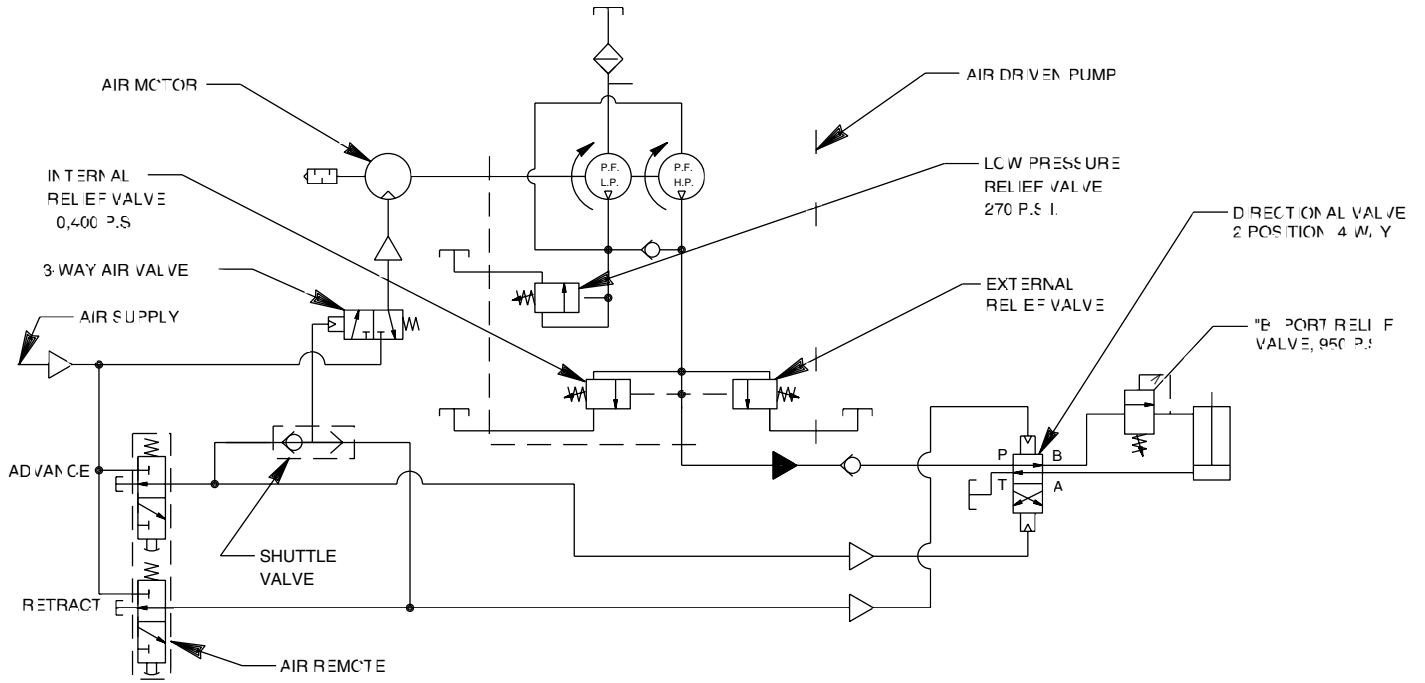
Note: Shaded areas reflect last revision(s) made to this form.

HAND SWITCH ASSEMBLY



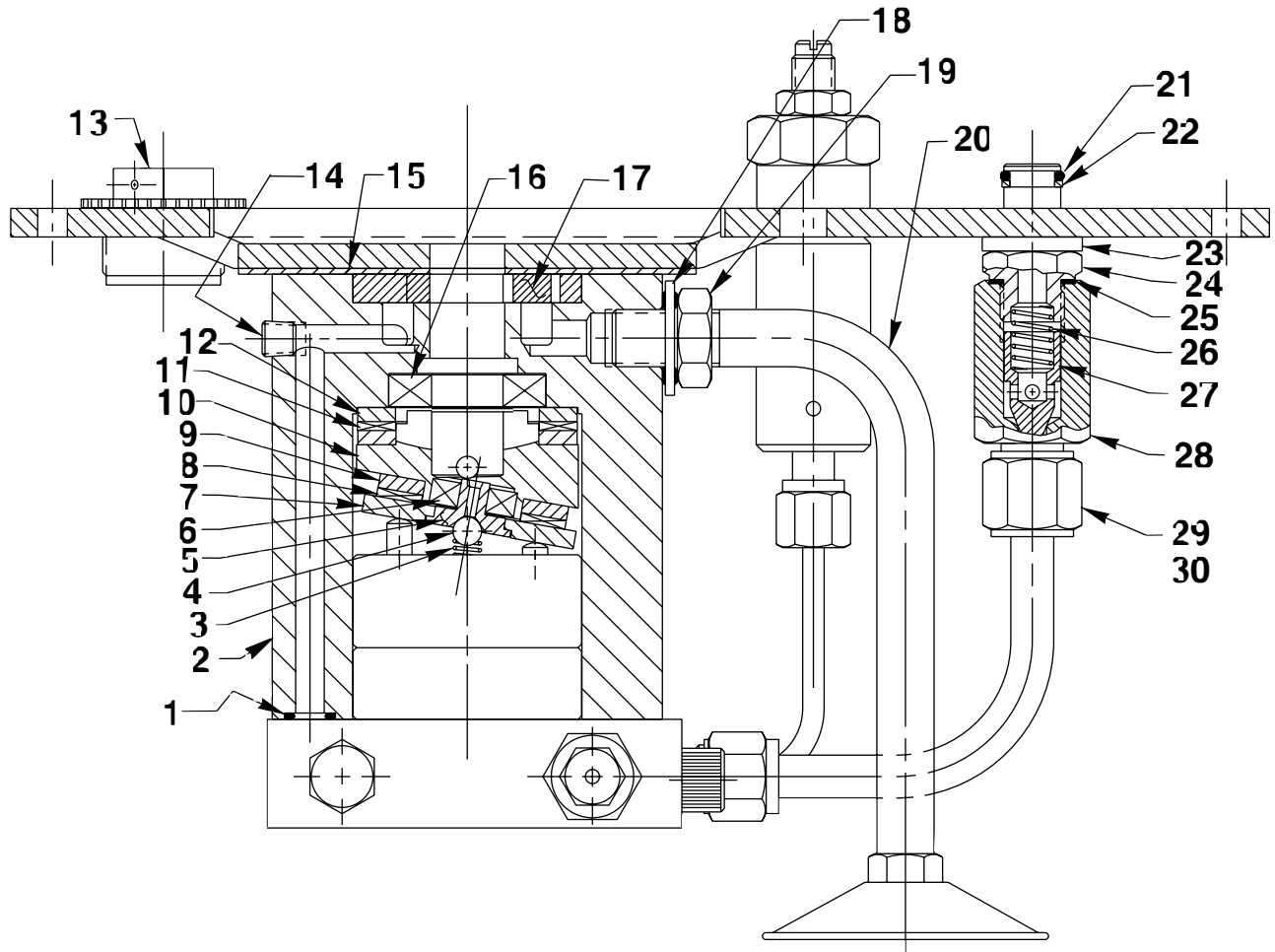
Item No.	Part No.	No. Req'd	Description
1	421265	1	Air Operated Hand Control
2	251759	1	Instruction Decal (Pump)
3	45052	1	Three Strand Hose (12 ft. without spring guards; Note: Connect hose assembly to remote control and pump as shown. Color coded or numbered ends must correspond to numbers on the remote control and pump unit.)
4	208218	3	Straight Fitting (1/8 NPTF)
5	251760	1	Instruction Decal (Release)

HYDRAULIC SCHEMATIC





#53107 BASIC PUMP ASSEMBLY
SIDE VIEW



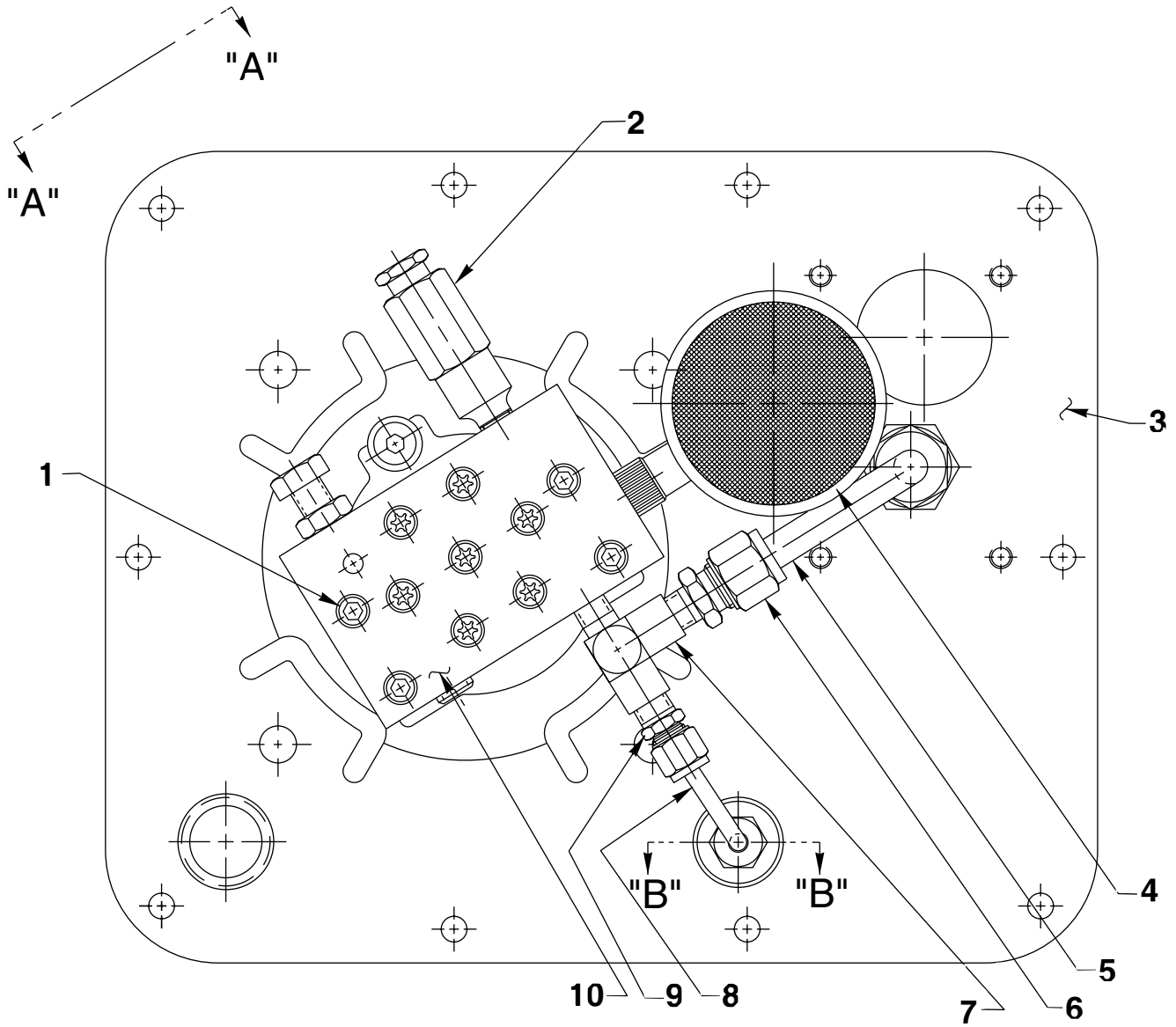
Parts List, Form No. 101813, Back sheet 4 of 7

Item No.	Part No.	No. Req'd	Description
1	10267	1	O-ring (7/16 X 5/16 X 1/16; Nitrile)
	18974	1	O-ring (7/16 X 5/16 X 1/16; Viton)
	13472	1	O-ring (7/16 X 5/16 X 1/16; EPR)
2	52883	1	Pump End Housing
3	16320	1	Spring (1/4 O.D. X 3/4 Lg.)
4	10375	1	Steel Ball (1/4 Dia.)
5	23547	1	Top bearing Plate
6	11814	1	Ball Bearing
7	23548	1	Top Plate
8	15431	1	Needle Bearing
9	15432	1	Bearing Race
10	35271	1	Angle Plate
11	11228	1	Needle Bearing
12	11227	2	Bearing Race
13	213706	1	Filler Plug
14	11084	1	Plug Fitting (1/16 NPTF)
15	307296	1	Wear Plate
16	15695	1	Ball Bearing
17	15693	1	Gerotor Set
18	213709	1	Seal Washer (Nitrile)
	215633	1	Seal Washer (Viton)
	215634	1	Seal Washer (EPR)
19	10390	1	Hex Jam Nut (1/2-20 UNF)
20	213686	1	Intake Tube
21	10268	1	O-ring (1/2 X 3/8 X 1/16; Nitrile)
	11439	1	O-ring (1/2 X 3/8 X 1/16; Viton)
	17716	1	O-ring (1/2 X 3/8 X 1/16; EPR)
22	11863	1	Backup Washer (1/2 X 3/8 X 1/16)
23	21484	1	Spacer
24	214762	1	Valve Connector (Note: The torque between the valve connector [Item #24] and the cover plate shall be 30 ft. lbs. maximum. The torque between the valve connector [Item #24] and the check valve body [Item 28] shall be 40-50 ft. lbs.)
25	10261	1	Copper Washer (3/4 X 19/32 X 1/32)
26	10425	1	Compression Spring (3/8 O.D. X 3/4 Lg.)
27	20771	1	Poppet
28	201879	1	Check Valve
29	10430	1	Tube Sleeve (3/8 Dia.)
30	10431	1	Nut Tube Fitting (5/8-18 UNF)





BASIC PUMP ASSEMBLY TOP VIEW



Parts List, Form No. 101813, Back sheet 5 of 7

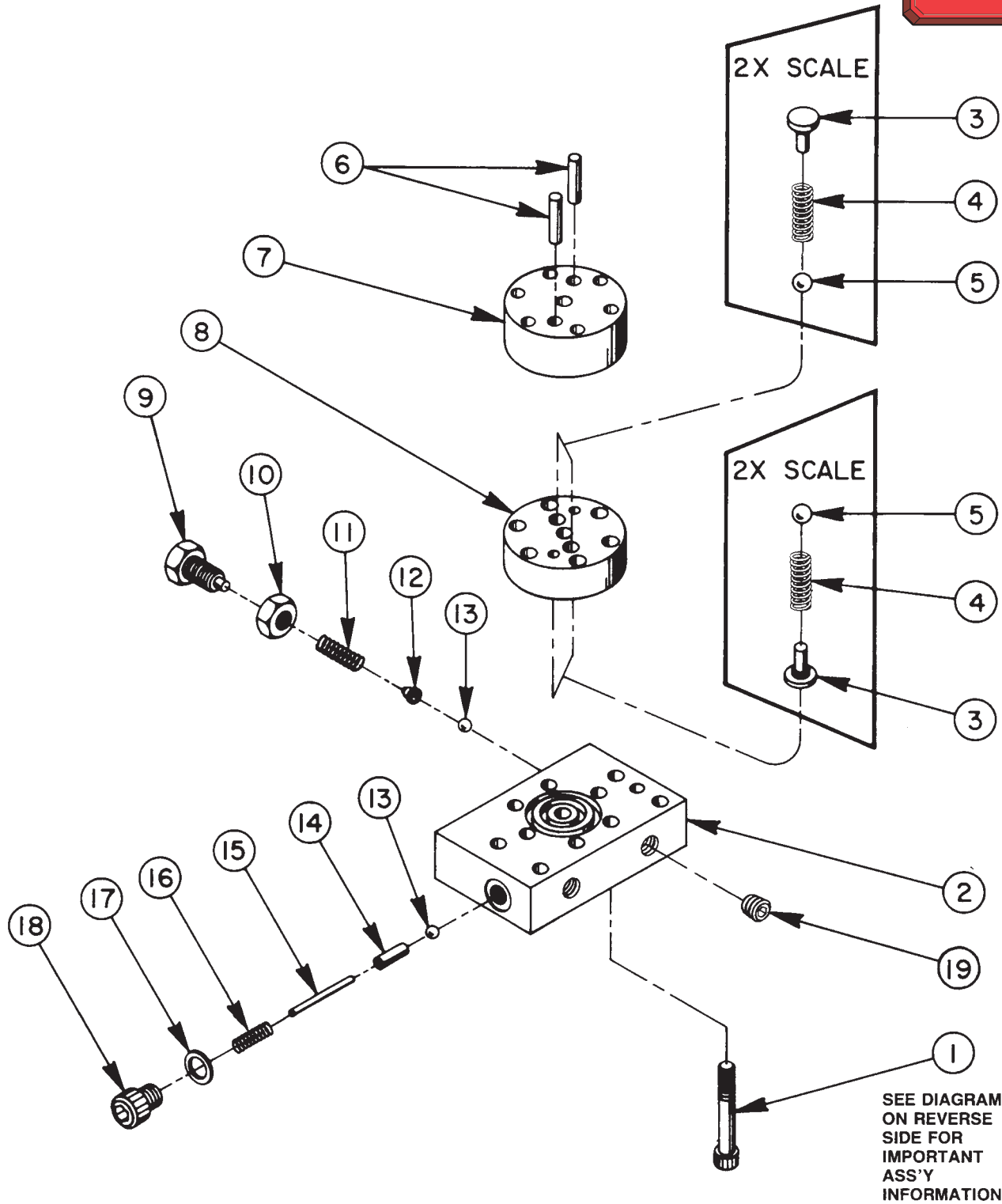
Item No.	Part No.	No. Req'd	Description
1	15642	4	Machine Screw (1/4-20 UNC X 5" Lg.; Torque to 55/65 in. lbs.)
2	21278	1	Relief Valve (Set at 10,100 to 10,700 PSI)
3	47404BK2	1	Cover Plate
4	29682	1	Filter
5	214866	1	Pressure Tube
6	12696	1	Straight Fitting (1/8 NPTF)
7	18969	1	Tee Fitting (1/8 NPTF)
8	214868	1	Pressure Regulator Tube
9	14844	1	Straight Fitting (1/8 NPTF)
10	36922	1	High Pressure Pump Assembly (See sheet 6 of 7)



Note: Shaded areas reflect last revision(s) made to this form.

HIGH PRESSURE PUMP ASSEMBLY

To Parts List



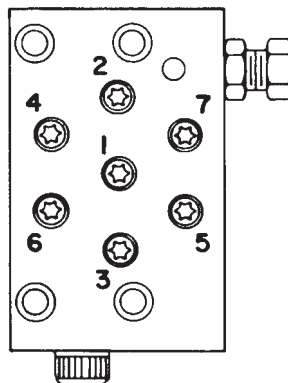
Note: Added this page at last revision(s) made to this form.

Item No.	Part No.	No. Req'd	Description
1	*16747	7	Torx Drive Cap Screw (1/4-28 x 1-3/4 Lg.; See diagram below)
2	*36912	1	Pump End Plate
3	*24549	4	Valve Guide
4	*10445	4	Compression Spring (5/32 O.D. x 3/4 Lg.)
5	*12223	4	Steel Ball (3/16 dia.)
6	*20775	2	Piston
7	*41006	1	Pump Barrel
8	*41007	1	Valve Head
9	200797	1	Adjusting Screw
10	10386	1	Jam Nut (3/8-24)
11	15691	1	Compression Spring (1/4 O.D. x 5/8 Lg.)
12	200796	1	Adapter, Spring & Ball
13	10375	2	Steel Ball (1/4 dia.)
14	201998	1	Sleeve
15	12571	1	Roll Pin (1/8 dia. x 1-3/8 Lg.)
16	14431	1	Compression Spring (.197 O.D. x 3/4 Lg.)
17	12042	1	Copper Washer (9/16 x 3/8 x 1/32 thk.)
18	29690	1	Cap Screw (Torque to 180 in. lbs.)
19	10427	1	Pipe Plug (1/8 NPTF)



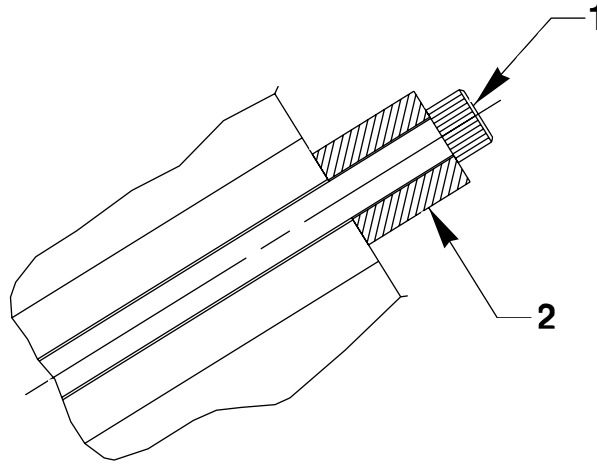
Consult factory when replacing items marked with an asterisk (*).

BOLT TIGHTENING SEQUENCE

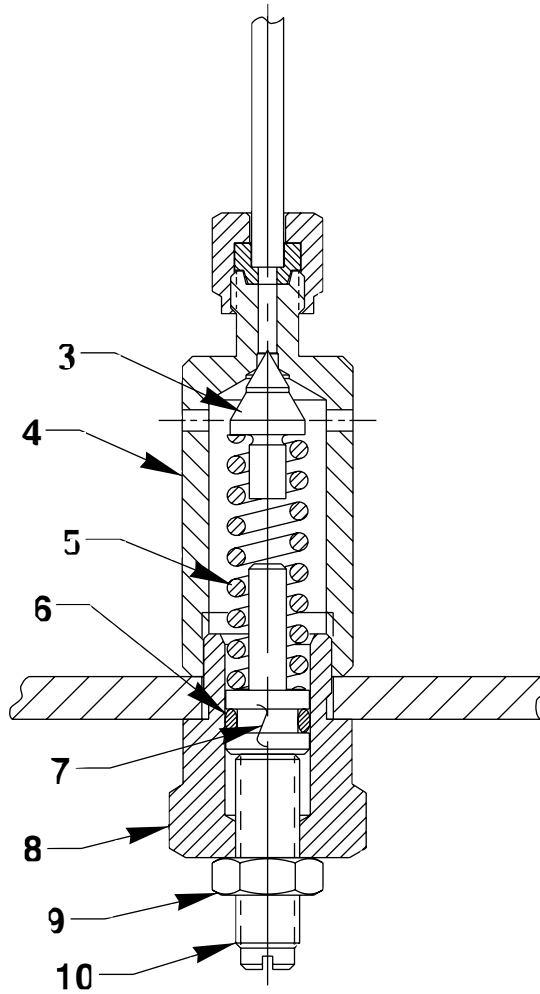


NOTE: Assemble in sequence shown. Lubricate under head on threads. Torque to 170 in. lbs.

Note: Added this page at last revision(s) made to this form.



VIEW A-A



SECTION B-B

Parts List, Form No. 101813, Back sheet 7 of 7

Item No.	Part No.	No. Req'd	Description
1	15642	1	Machine Screw (1/4-20 UNC X 5" Lg.; Torque to 55/65 in. lbs.)
2	214720	1	Spacer
3	21046	1	Valve Stem
4	22361	1	Valve Body
5	10495	1	Compression Spring (1/2 O.D. X 1-5/8" Lg.)
6	10268	1	O-ring (1/2 X 3/8 X 1/16; Nitrile)
	11439	1	O-ring (1/2 X 3/8 X 1/16; Viton)
	17716	1	O-ring (1/2 X 3/8 X 1/16; EPR)
7	21306	1	Spring Guide
8	21305	1	Valve Cap
9	10386	1	Hex Jam Nut (3/8-24 UNF)
10	22362	1	Adjust Screw (3/8-24 X 1-1/4")



Refer to any operating instructions included with this product for detailed information about operation, testing, disassembly, reassembly, and preventive maintenance.

Items found in this parts list have been carefully tested and selected. **Therefore: Use only genuine Power Team replacement parts!**

Additional questions can be directed to our Technical Services Department.