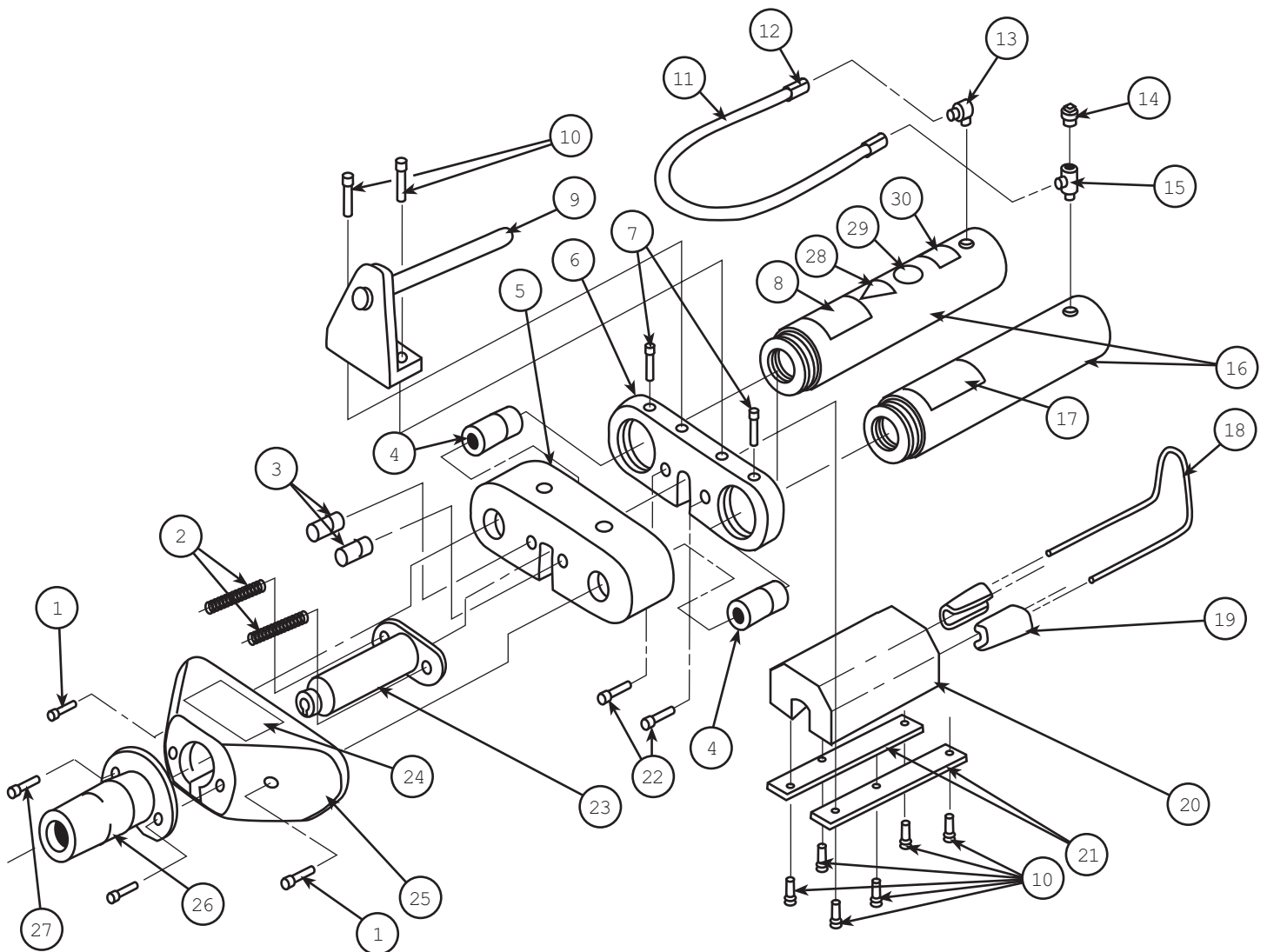


**SINGLE ACTING, SPRING RETURN, POWER SEAT
POST TENSION JACK**
Max. Capacity: 20 Ton



PARTS LIST

ITEM	PART NO.	DESCRIPTION	QTY.
1	10984	Soc. Hd. Cap Screw (3/8 X 1-1/2 Lg.)	2
2	252574	Power Seater Return Spring	2
3	252561	Power Seater Piston	2
4	252560	Cylinder Stud	2
5	252559	Front Center Block	1
6	252558	Rear Center Block	1
7	10149	Set Screw (3/8 X 1/2 Lg.)	2
8	251762	Warning Decal	1
9	252572	Jack Handle	1
10	10807	Soc. Hd. Cap Screw (1/4 X 1/2 Lg.)	8
11	351500	Cylinder Loop Hose	1
12	9675	Swivel Fitting	2
13	9681	Elbow Fitting	1
14	11127	Pipe Plug (3/8 NPTF)	1
15	9672	Tee Fitting	1
16	C1010C-PTP	Cylinder (10 ton; See Form #101465)	2
17	252576	Danger Decal	1
18	252570	Gripper Handle	1
19	252569	Gripper (.600)	1
	252567	Gripper (1/2 in.)	1
	252568	Gripper (3/8 in.)	1
20	252566	Gripper Block	1
21	252565	Retainer Plate	2
22	10053	Soc. Hd. Cap Screw (3/8 X 1-1/4 Lg.)	2
23	252562	Wedge Setter (3 in.)	1
24	252577	Warning Decal	1
25	252563	Nose Body	1
26	252564	Nose Piece (3 in.)	1
27	10006	Soc. Hd. Cap Screw (1/4 X 5/8 Lg.)	2
28	251057	Warning Decal	1
29	253584	Pictorial Decal (Read Instructions)	1
30	350988	CE Decal	1
PARTS INCLUDED BUT NOT SHOWN			
	309219	Trade Name Decal (Power Team)	2

Refer to any operating instructions included with this product for detailed information about operation, testing, disassembly, reassembly and preventive maintenance.

Items found in this parts list have been carefully tested and selected. **Therefore: Use only genuine Power Team replacement parts!**

Additional questions can be directed to our Technical Services Department.