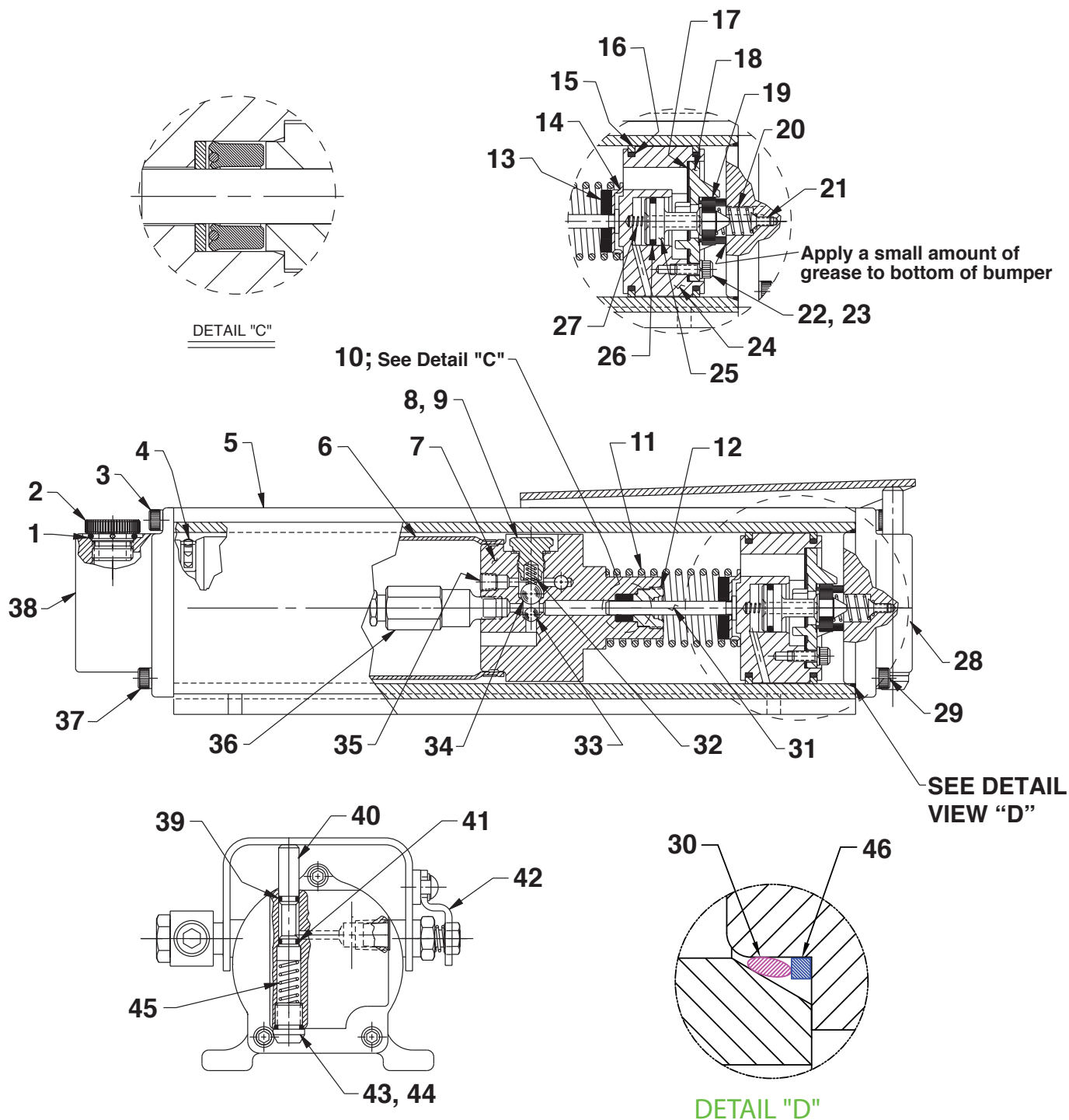
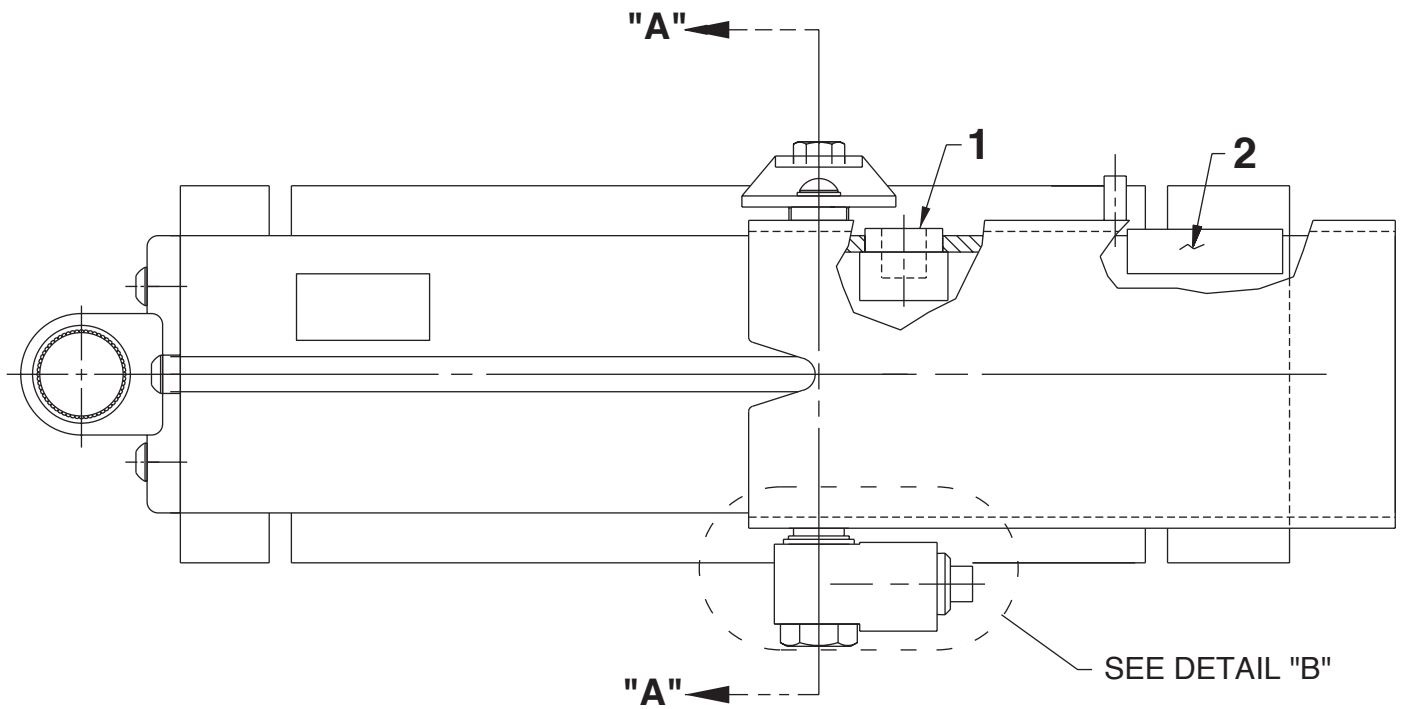


**MODEL B  
AIR/HYDRAULIC PUMP  
TUBE STYLE**

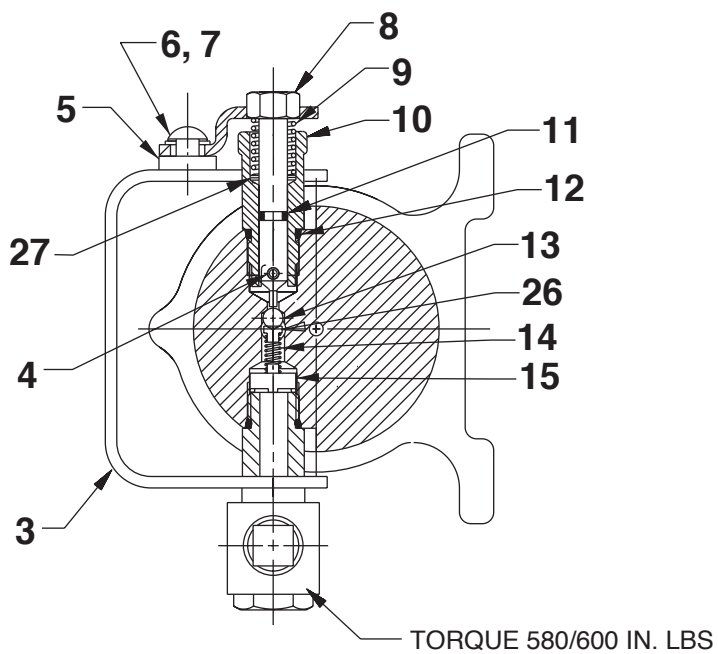


| Item No. | Part No. | No. Req'd | Description   |
|----------|----------|-----------|---|
| 1        | 10274    | 1         | O-ring (.87 X .68)  |
| 2        | 351245   | 1         | Filler Cap  |
| 3        | 10807    | 1         | Screw (1/4-20 x 1/2 Lg.; Torque to 60/80 in. lbs.)  |
| 4        | *252303  | 2         | Clamp   |
| 5        | 65438    | 1         | Pump Housing  |
| 6        | *421332  | .50       | Bladder (Cut to 6.092 / 6.032 Lg.)  |
| 7        | 65308    | 1         | Pump Body   |
| 8        | 351394   | 1         | Valve Screw (1/2-20 X 7/8 Lg.; Torque to 350/370 in. lbs.)  |
| 9        | *14874   | 1         | Copper Washer (.70 X .50)   |
| 10       | *13934   | 1         | U-cup & Backup  |
| 11       | 13938    | 1         | Spring (1.45 O.D. X 4.4)  |
| 12       | 304295   | 1         | Retainer (Note: See "INSTRUCTIONS FOR RETAINER REPLACEMENT" on sheet 3 of 3.)   |
| 13       | *203143  | 1         | Bumper  |
| 14       | 210994   | 1         | Spring Guide  |
| 15       | *14265   | 2         | Piston Ring (2.77 X 2.54; Split)  |
| 16       | *251835  | 2         | O-ring (2.31 X 2.12)  |
| 17       | *28239   | 1         | Gasket  |
| 18       | 33822    | 1         | Piston End Plate Casting  |
| 19       | 28183    | 1         | Piston Poppet   |
| 20       | *205679  | 1         | Spring (.49 O.D. X .92)   |
| 21       | *205674  | 1         | Flat Hd. Screw (8-32 X 3/8; Torque to 12/18 in. lbs.)   |
| 22       | 211054   | 3         | Soc. Hd. Screw (10-24 X 1/2; Torque to 50/55 in. lbs.)  |
| 23       | *10241   | 3         | Lockwasher (.33 X .20)  |
| 24       | 52390    | 1         | Piston Body   |
| 25       | 305475   | 1         | Exhaust Valve Stem  |
| 26       | *211052  | 1         | O-ring (.90 X .70)  |
| 27       | *12692   | 1         | Spring (.18 O.D. X 1.70)  |
| 28       | 58961    | 1         | Rear Head   |
| 29       | 10008    | 3         | Screw (1/4-20 x 3/4 Lg.; Torque to 120/140 in. lbs.)  |
| 30       | *252349  | 1         | O-ring (2.75 X 2.65)  |
| 31       | 28226    | 1         | Piston (1/4")   |
| 32       | *10444   | 1         | Spring (.25 O.D. X .41)   |
| 33       | *10375   | 1         | Steel Ball (1/4" Dia.; Seat at assembly)  |
| 34       | *10378   | 1         | Steel Ball (3/8" Dia.; Seat at assembly)  |
| 35       | 11084    | 1         | Plug Fitting (1/16 NPTF)  |
| 36       | 21278-60 | 1         | Relief Valve (For 63-0005; Set at 6,100 to 6,700 PSI)   |
|          | 21278-90 | 1         | Relief Valve (For 63-0012; Set at 9,100 to 9,700 PSI)   |
| 37       | 10008    | 2         | Screw (1/4-20 x 3/4 Lg.; Torque to 60/80 in. lbs.)  |
| 38       | 421460   | 1         | Oil Filler End Cap  |
| 39       | *12557   | 1         | O-ring (.34 X .21; Apply a small amount of grease at assembly)  |
| 40       | 351423   | 1         | Valve Stem  |
| 41       | *12522   | 1         | O-ring (.37 X .25; Urethane; Apply a small amount of grease at assembly)  |
| 42       | 351371   | 1         | Release Clip (Adjust release clip so that hydraulic pressure starts to release when pedal is lifted off the top of the valve stem .050/.150.) |
| 43       | 250258   | 1         | Screw (1/2-13 x 1/2; Apply Loctite 592 [PT #905516] or equivalent.)   |
| 44       | 15279    | 1         | O-ring (.50 x .37 Nitrile)  |
| 45       | 253479   | 1         | Spring (.36 O.D. X 1.0)   |
| 46       | *2008093 | 1         | Washer, BKUP 2.50 IN x 2.65 x 0.045 R   |

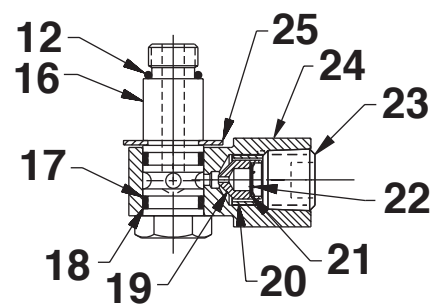
Part numbers marked with an asterisk (\*) are contained in Repair Kit No. 300949.



### SECTION A-A



### DETAIL "B"



| Item No. | Part No. | No. Req'd | Description   |
|----------|----------|-----------|---|
| 1        | *252300  | 2         | Muffler   |
| 2        | *14350   | 1         | Warning Decal   |
| 3        | 58880BK2 | 1         | Foot Pedal  |
| 4        | 10796    | 1         | Dowel Pin (.13 X .50)   |
| 5        | 252471   | 1         | Bushing   |
| 6        | 28822    | 1         | Button Hd. Screw (1/4-20 X 3/4 Lg.)   |
| 7        | 12719    | 1         | Flat Washer   |
| 8        | 252526   | 1         | Release Pin (Release pin must move freely through clip when assembled)          |
| 9        | 253223   | 1         | Spring (.49 O.D. X 1.0)   |
| 10       | 351413   | 1         | Pivot Cam (Torque to 280/300 in. lbs.)  |
| 11       | *10265   | 1         | O-ring (.31 X .18)  |
| 12       | *10300   | 2         | O-ring (.62 X .46)  |
| 13       | *10374   | 1         | Steel Ball (7/32" Dia.; Seat at assembly)                                       |
| 14       | *14282   | 1         | Compression Spring (3/16 O.D. X 1/2 Lg.)  |
| 15       | 252445   | 1         | Spring Guide  |
| 16       | 351375   | 1         | Swivel Fitting  |
| 17       | 11284    | 2         | O-ring (.68 X .56)  |
| 18       | 12391    | 2         | Backup Washer (.69 X .56)   |
| 19       | 251966   | 1         | Poppet  |
| 20       | 253643   | 1         | Poppet Retainer   |
| 21       | 12201    | 1         | Internal Retaining Ring (.18 X .010)  |
| 22       | 214596   | 1         | Filter Disc   |
| 23       | 16232    | 1         | Plug Fitting (3/8 NPTF; Apply Loctite #545 or equiv. and torque to 15 ft. lbs.) |
| 24       | 351450   | 1         | Swivel Block  |
| 25       | 11902    | 1         | External Retaining Ring (.57 X .050)  |
| 26       | 252856   | 1         | Ball Guide  |
| 27       | 253663   | 2         | Washer  |

Part numbers marked with an asterisk (\*) are contained in Repair Kit No. 300949.

Refer to any operating instructions included with this product for detailed information about operation, testing, disassembly, reassembly, and preventive maintenance.

Items found in this parts list have been carefully tested and selected. **Therefore: Use only genuine Power Team replacement parts!**

Additional questions can be directed to our Technical Services Department.

# INSTRUCTIONS FOR RETAINER REPLACEMENT

Your pump's retainer is locked into place by one of the two following methods. Determine which method was used on your pump's retainer, then follow the appropriate steps to remove the old and install and stake the new.

## **Method 1 - Retainer shows no sign of stake marks**

1. This retainer has been locked in place with a Loctite product. To replace it, a moderate amount of heat needs to be applied to the cylinder nut (in the area of the retainer) to soften the existing Loctite allowing it to be removed.
2. Install the new retainer into the cylinder nut and torque to 80/100 in. lbs. **Note: Do not use a Loctite product this time but stake the new retainer in place according to instructions in Step 3.**
3. To lock retainer into place, use a center punch positioned in the seam between the retainer and the cylinder nut and stake the new retainer in two places approximately 180° apart.

## **Method 2 - Retainer has two stake marks in the seam between the retainer and the cylinder nut**

1. For replacement of this retainer, the stake marks must be removed. Using a 1/8" or larger diameter drill bit, remove the existing stakes by drilling a short distance into the stake marks. Remove the retainer.
2. Install the new retainer into the cylinder nut and torque to 80/100 in. lbs.
3. To lock retainer into place, use a center punch positioned in the seam between the retainer and the cylinder nut and stake the new retainer in two places approximately 180° apart.

**NOTE: Do not stake in the old stake marks.**