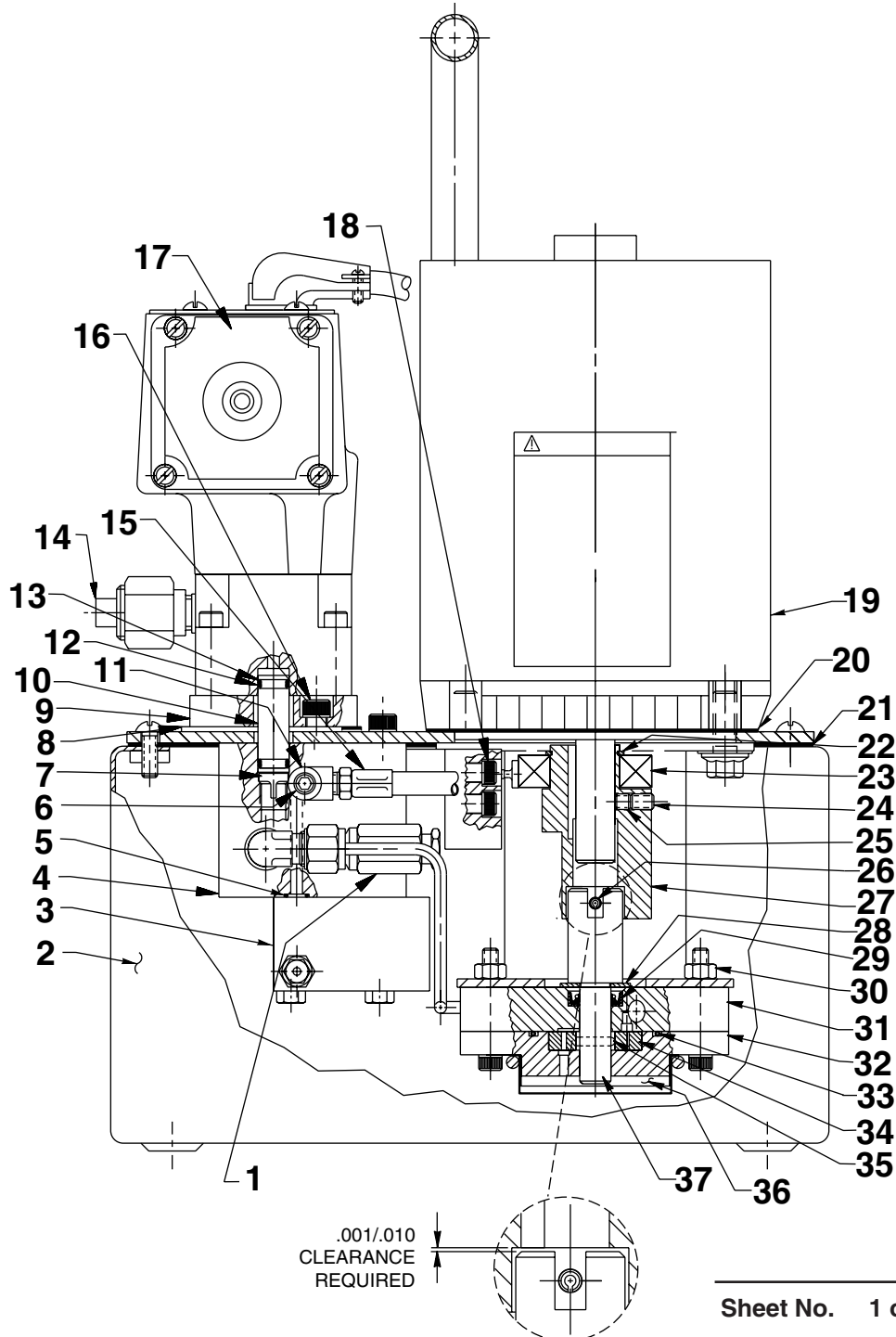


## MODEL A HYDRAULIC PUMP GENERAL SECTION



# Parts List, Form No. 101867, Back sheet 1 of 5

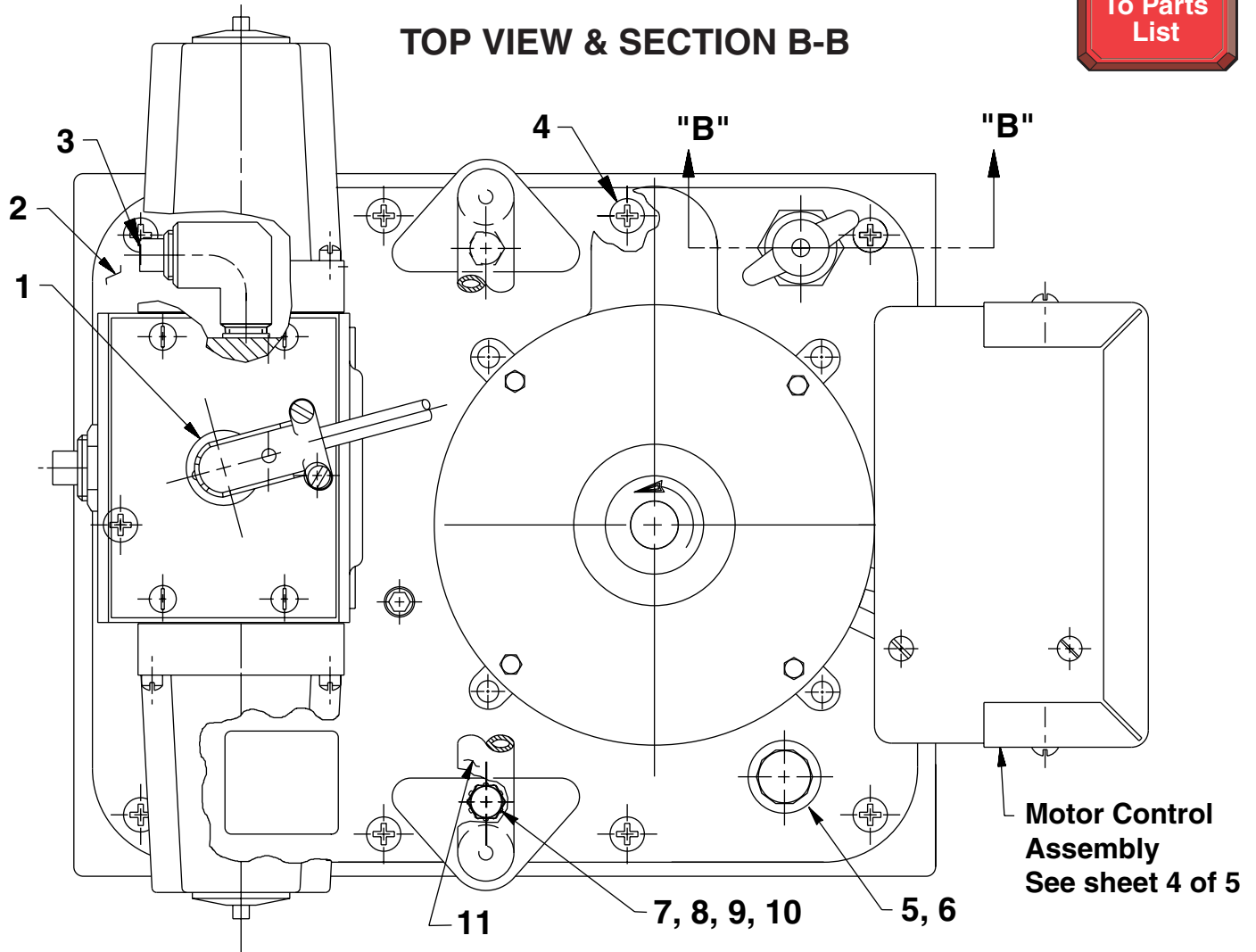
Item No.	Part No.	No. Req'd	Description
1	21278	1	Relief Valve
2	64538BL10	1	Reservoir (2 gallon; Aluminum)
3	52167	1	Block
4	61167	1	Check Body
5	10266	1	O-ring (3/8 X 1/4 X 1/16)
6	10427	1	Plug Fitting (1/8 NPTF)
7	209795	1	Outlet Ball Stop
8	200395	1	Gasket
9	52165	1	Manifold
10	209809	1	Coupling
11	19463	1	Tee Fitting (1/8 NPTF)
12	11863	2	Backup Washer (1/2 X 3/8 X 1/16)
13	10268	2	O-ring (1/2 X 3/8 X 1/16)
14	11127	1	Plug Fitting (3/8 NPTF)
15	304819	1	Polyurethane Hose (1/2 in.)
16	10030	2	Socket Head Screw (5/16-18 X 3/4 Lg.; Torque to 200/240 in. lbs.)
17	65285	1	Solenoid Valve (4 Way/115 V.)
18	10022	4	Socket Head Screw (1/4-20 X 1-1/2" Lg.; Torque to 180/200 in. lbs.)
19	58196YE3	1	Electric Motor (110/115 V. 50/60 Hz)
20	351060	1	Motor Base Gasket
21	40164	1	Reservoir Gasket
22	209798	1	External Retaining Ring (1.18 X .052)
23	209805	1	Ball Bearing
24	10519	1	Hex Set Screw (1/4-20 X 3/8 Lg.; Torque to 60/80 in. lbs.)
25	10136	1	Hex Set Screw (1/4-20 X 1/4 Lg.; Torque to 60/80 in. lbs.)
26	10973	1	Slotted Spring Pin (3/16 Dia. X 1-1/4" Lg.; Note: Locate slot as shown)
27	45596	1	Eccentric
28	12595	1	Brass Washer (1-1/8" X 1/2 X .077 Thk.)
29	304830	1	Oil Seal (.88 X .50)
30	10199	2	Hex Nut (1/4-20 UNC)
31	61170	1	Housing
32	61169	1	Lower Gerotor Housing
33	10922	1	O-ring (2-1/8" X 1-15/16" X 3/32)
34	304826	1	Gerotor Set
35	209794	1	Gerotor Drive Pin
36	21846	1	Filter Support
37	304835	1	Drive Shaft



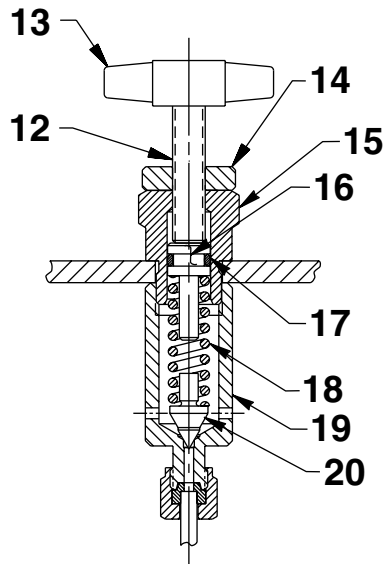
Note: Shaded areas reflect last revision(s) made to this form.



### TOP VIEW & SECTION B-B



### SECTION B-B



## Parts List, Form No. 101867, Back sheet 2 of 5

---

Item No.	Part No.	No. Req'd	Description
1	11144	1	90° Elbow Connector
2	46064YE3	1	Cover Plate
3	11127	1	Plug Fitting (3/8 NPTF)
4	10177	10	Round Head Screw (1/4-20 UNC X 3/4 Lg.)
5	20937	1	Vent Cap
6	200415	1	O-ring (13/16 X 5/8 X 3/32)
7	10009	2	Hex Head Cap Screw (1/4-20 UNC X 3/4 Lg.)
8	11351	2	External Tooth Washer (.50 X .26)
9	10245	2	Lockwasher (.49 X .26)
10	10199	2	Hex Nut (1/4-20; Torque to 60/80 in. lbs.)
11	47492	1	Handle
12	208148	1	Screw (3/8-24 x 1-1/2 Lg.)
13	205788	1	Thumb Screw Knob
14	215683	1	Regulator Locking Nut (3/8-24)
15	21305	1	Valve Cap
16	21306	1	Spring Guide
17	10268	1	O-ring (1/2 X 3/8 X 1/16)
18	10495	1	Compression Spring (1/2 O.D. X 1-5/8" Lg.)
19	22361	1	Valve Body
20	21046	1	Valve Stem



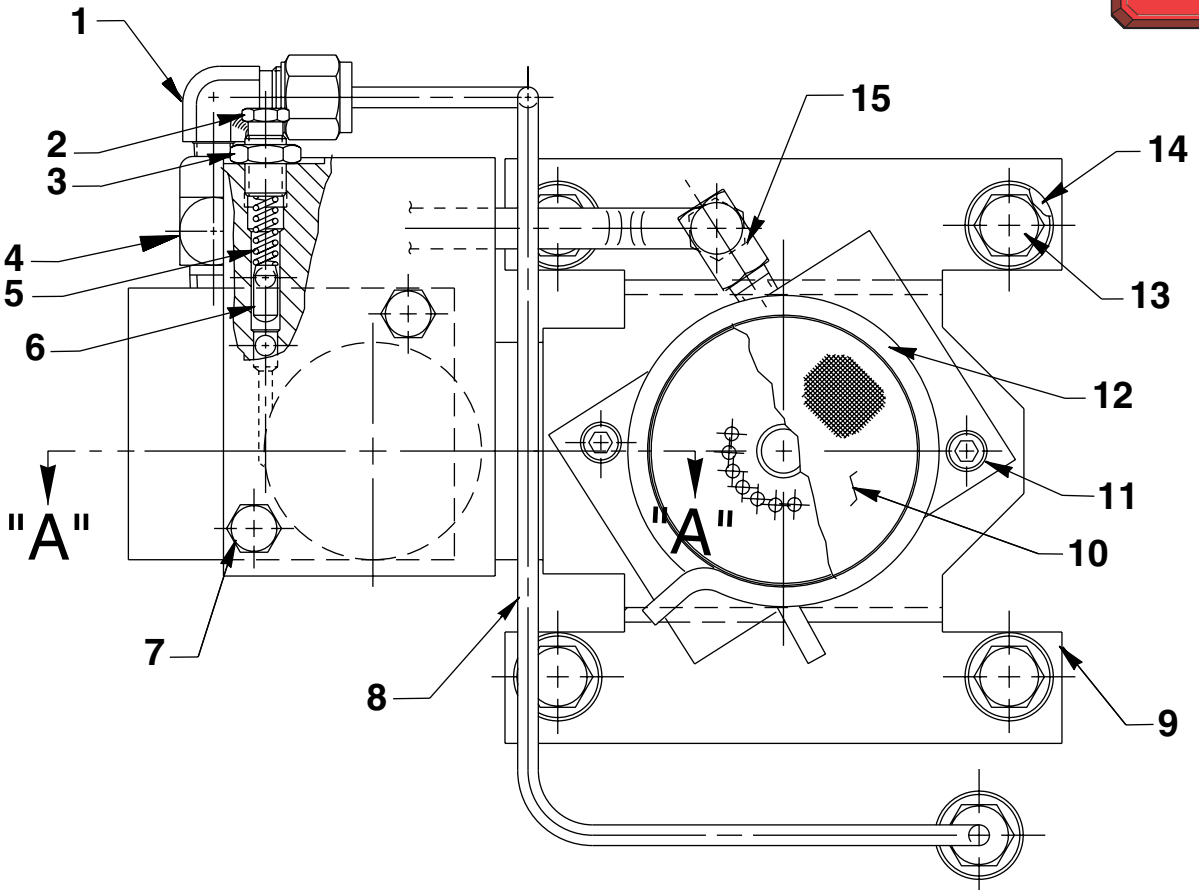
Refer to any operating instructions included with this product for detailed information about operation, testing, disassembly, reassembly, and preventive maintenance.

Items found in this parts list have been carefully tested and selected. **Therefore: Use only genuine Power Team replacement parts!**

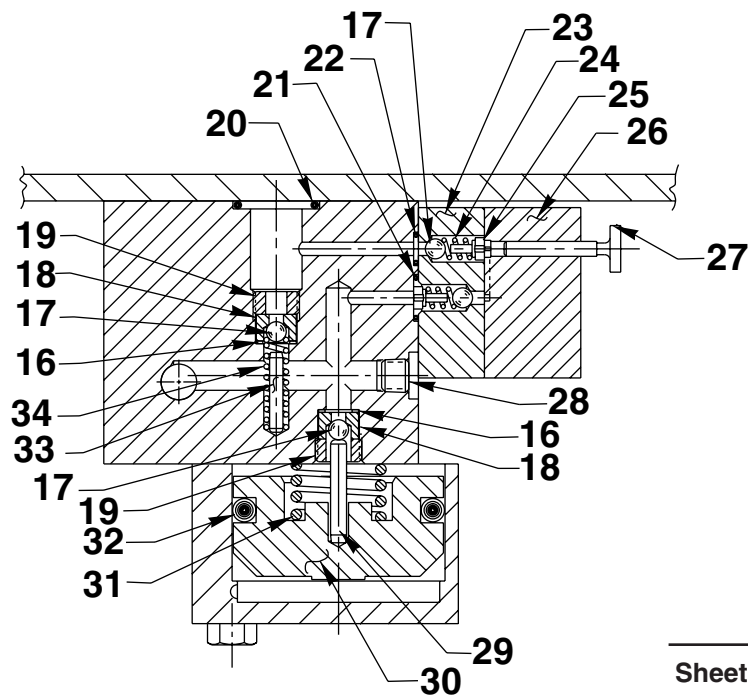
Additional questions can be directed to our Technical Services Department.

### BOTTOM VIEW & SECTION A-A

To Parts List



### SECTION A-A



# Parts List, Form No. 101867, Back sheet 3 of 5

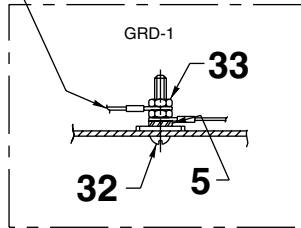
Item No.	Part No.	No. Req'd	Description
1	11278	1	90° Elbow Fitting (1/8 NPTF)
2	29786	1	Adjusting Nut (3/8-24; Low pressure relief valve)
3	10386	1	Hex Jam Nut (3/8-24)
4	18969	1	Tee Fitting (1/8 NPTF)
5	11221	1	Compression Spring (1/4 O.D. X 1" Lg.)
6	15156	1	Dowel Pin (1/4 Dia. X 1/2 Lg.; Note: Install tapered end toward spring.)
7	13037	2	Hex Head Cap Screw (1/4-20 X 2"; Torque to 40/50 in. lbs.)
8	306171	1	Pressure Regulator Tube
9	52174	1	Pump Mounting Bracket
10	21608	1	Filter
11	10854	2	Socket Head Screw (1/4-20 X 3/8 Lg.; Torque to 60/80 in. lbs.)
12	11461	1	Hose Clamp
13	213663	4	Flange Hex Head Screw (3/8-16 X 1" Lg.)
14	10258	4	Plain Washer (.82 X .41)
15	14440	1	90° Elbow Fitting (1/8 NPTF)
16	10442	2	Copper Washer (3/8 X 1/4 X 1/32)
17	12223	4	Steel Ball (3/16" dia.)
18	209787	2	Replaceable Seat
19	209797	2	Hollow Lock Screw (7/16-20 X 1/4 Lg.; Torque to 180/200 in. lbs.)
20	10273	1	O-ring (13/16 X 5/8 X 3/32)
21	14763	1	O-ring (7/16 X 5/16 X 1/16; Urethane)
22	10265	1	O-ring (5/16 X 3/16 X 1/16)
23	45559	1	Block
24	10445	2	Compression Spring (5/32 O.D. X 3/4 Lg.)
25	24549	2	Ball Guide
26	45560	1	Block
27	304820	1	Piston
28	15130	1	Plug Fitting (1/16 PTF)
29	211843	1	Dowel Pin (3/16 Dia. X 1" Lg.; Note: Install with radius end out.)
30	46063	1	Piston
31	16346	1	Compression Spring (1" O.D. X 7/8 Lg.)
32	10283	1	O-ring (2" X 1-5/8" X 3/16)
33	12149	1	Dowel Pin (1/8 Dia. X 3/4 Lg.)
34	16057	1	Compression Spring (3/16 O.D. X 1" Lg.)



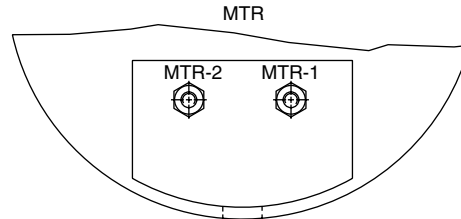
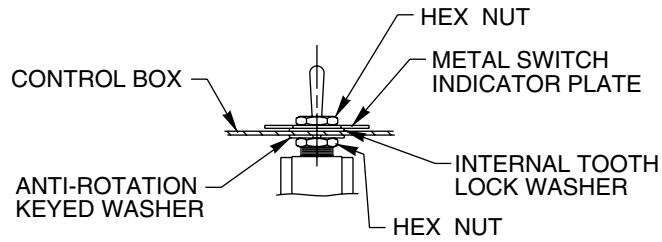
# MOTOR CONTROL ASSEMBLY



POWER CORD GROUND  
(MUST BE ISOLATED BETWEEN  
NUTS AND CAN BE AT  
TOP OR BOTTOM OF STACK.)

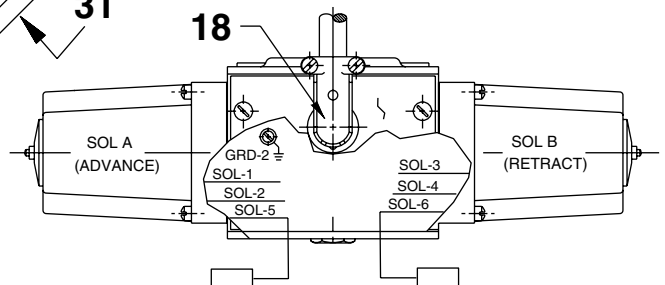
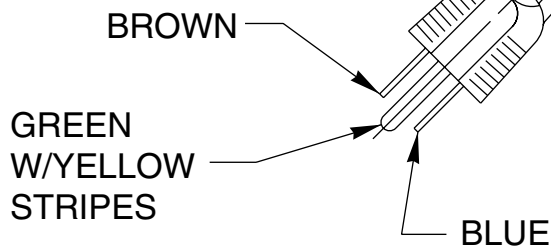
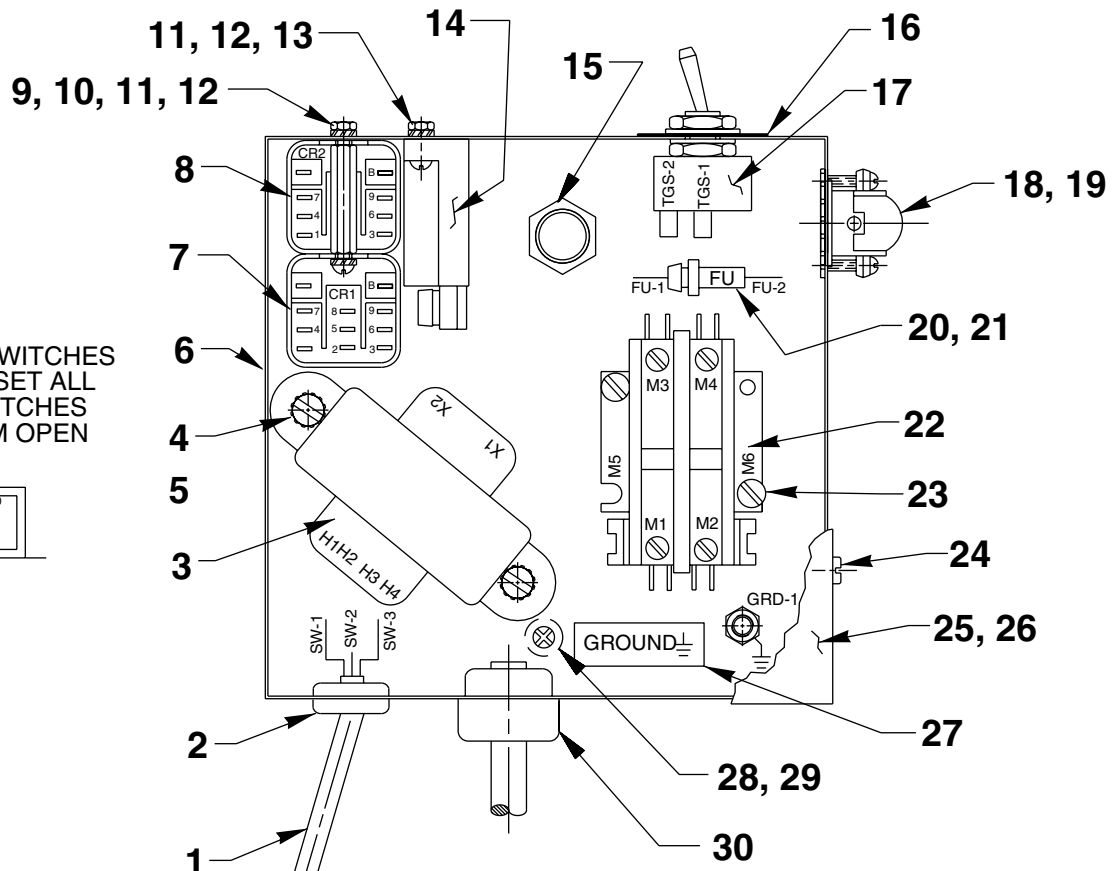
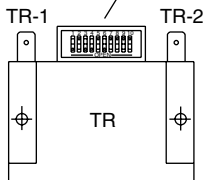
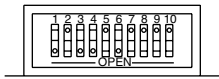


NOTE: SERRATED LOCK WASHER  
MUST BE ADJACENT TO  
METAL BOX. MORE WASHERS  
CAN BE USED IF DESIRED.



FOR PROPER MOTOR  
VOLTAGE CONNECTION  
AND ROTATION SEE  
CONNECTION INFORMATION  
SUPPLIED WITH MOTOR.

NOTE: TURN ON SWITCHES  
1, 3, 4, & 6. SET ALL  
OTHER SWITCHES  
AWAY FROM OPEN  
POSITION.

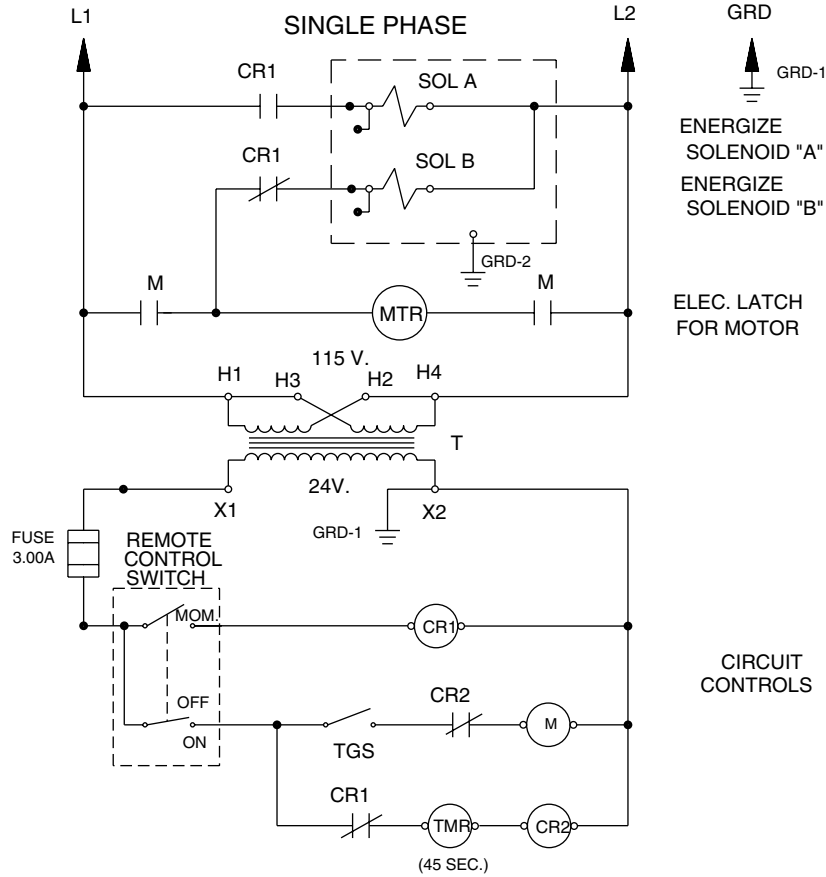


# Parts List, Form No. 101867, Back sheet 4 of 5

Item No.	Part No.	No. Req'd	Description
1	250023	1	Hand Control (See Sheet of 5)
2	15993	1	Strain Relief Bushing
3	305665	1	Transformer
4	11539	2	Round Head Screw (#10-24 X 1/4 Lg.)
5	11108	3	External Tooth Washer (.40 X .20)
6	51218YE3	1	Electrical Control Box
7	305602	1	General Purpose Relay
8	39092	1	General Purpose Relay
9	10195	4	Hex Nut (#6-32 UNC)
10	17563	2	Pan Head Screw (#6-32 UNC X 1/4 Lg.)
11	15906	6	External Tooth Washer (.31 X .15)
12	215376	2	Threaded Standoff
13	11426	2	Round Head Screw (6-32 X 1/2 Lg.)
14	251467	1	Adjustable Timer
15	11202	1	Nipple
16	13890	1	Indicator Plate
17	12301	1	Toggle Switch
18	11144	1	90° Elbow Connector
19	15565	2 ft.	Cable (16/4 SO)
20	206962	1	Fuse (3 amp 250 V.)
21	16887	1	Fuse Holder
22	420718-4	1	Contactor (2 pole)
23	10166	2	Round Head Screw (#10-24 X 1/2 Lg.)
24	14812	4	Pan Head Screw (#8-18 X 3/8 Lg.)
25	43126YE3	1	Control Box Cover
26	200188	1	Decal (Warning/Important)
27	205189	1	Decal (Ground)
28	252253	1	Pan Head Screw (#8-32 X 3/8 Lg.)
29	12355	1	Plain Washer (.44 X .19)
30	210112	1	Strain Relief Bushing
31	24733	1	Cord (8' Lg.; 115 V. 16/3 SJTO)
32	11856	1	Screw (10-24 x 1" Lg.)
33	10197	2	Hex Nut (10-24)



### ELECTRICAL SCHEMATIC



### HYDRAULIC SCHEMATIC

