

Parts List for:

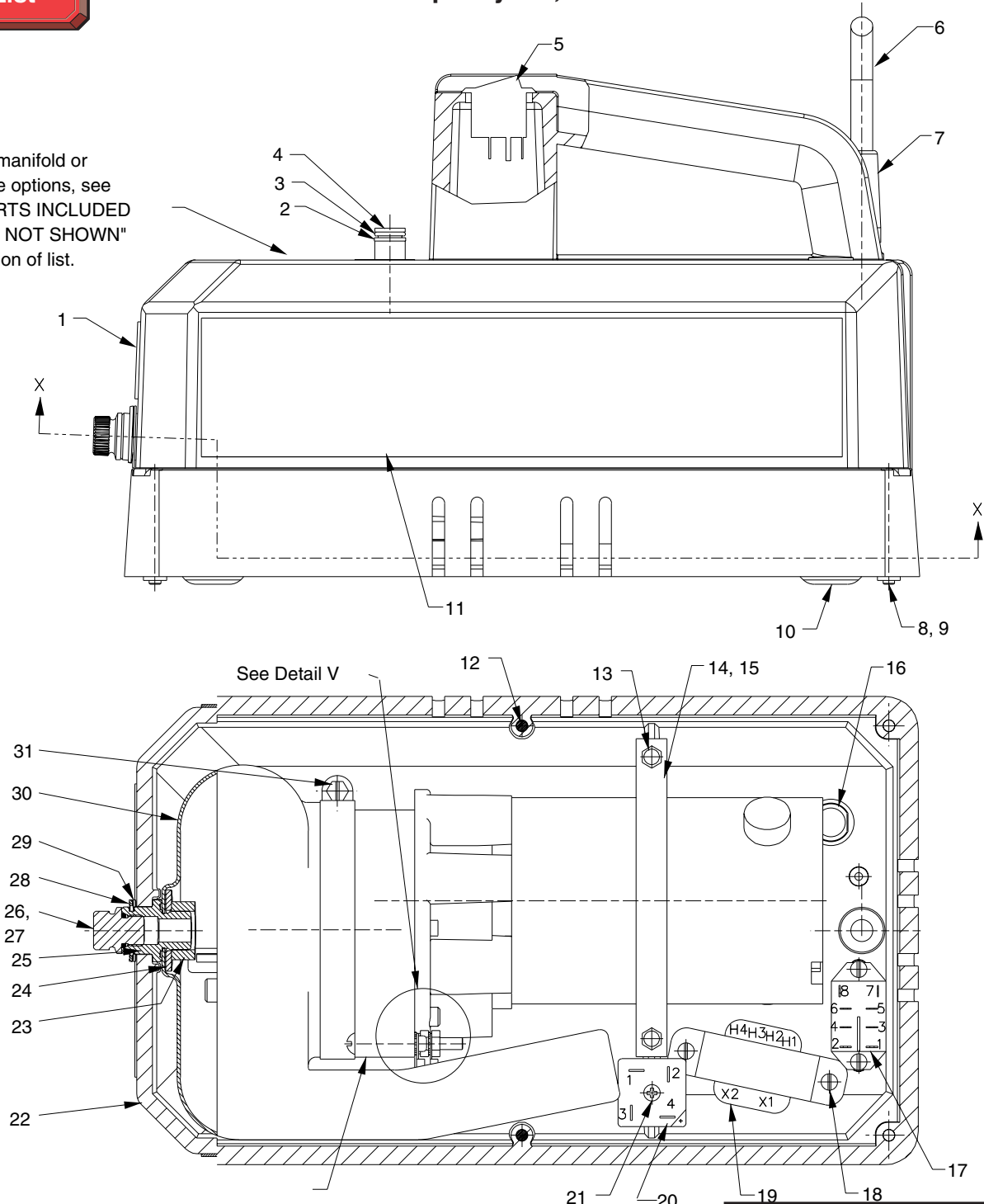
PE102-FSC
 PE102-28-DC
 PE102-28-FSC
 PE102-28-220DC

PE102-115DC
 PE102-220DC
 PE102-220-FSC



MODEL C
ELECTRIC HYDRAULIC PUMP
 Max. Capacity: 10,000 PSI

For manifold or valve options, see "PARTS INCLUDED BUT NOT SHOWN" section of list.



Basic Pump Assembly
 See back sheet 2 of 6

SECTION X-X

Sheet No. 1 of 6

Rev. 2

Date: 11 Jan. 2001

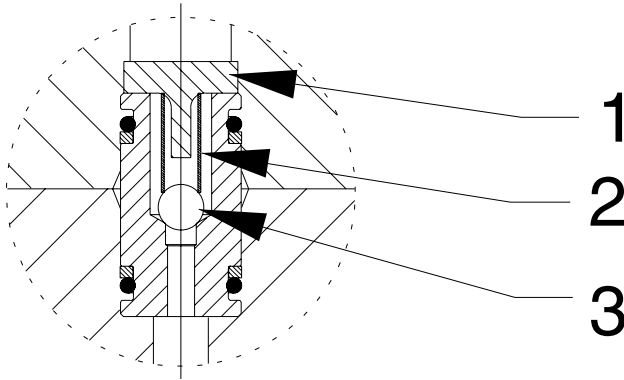
Parts List, Form No. 101883, Back sheet 1 of 6

Item No.	Part No.	No. Req'd	Description	Item No.	Part No.	No. Req'd	Description
1	*251072	1	Warning & Fill Instructions Decal	20	251050	1	Rectifier (For PE102-FSC, PE102-28-FSC & PE102-220-FSC)
2	*11863	2	Backup Washer (.50 x .38)	21	251073	1	Screw (6-32 x 3/4 Lg.; For PE102-FSC, PE102-28-FSC & PE102-220-FSC)
3	*10268	2	O-ring (.50 x .37 Nitrile)	22	64363	1	Plastic Housing
	†17716	2	O-ring (.50 x .37 EPR)	23	10394	1	Hex Nut (5/8-18)
4	*251128	1	Bushing	24	13324	1	Washer (1.33 x .66)
5	251051	1	Rocker Switch (For PE102-FSC, PE102-28-FSC & PE102-220-FSC)	25	350583	1	Filler Adapter
6	24733	1	Cord Set (For PE102-FSC, PE102-28-FSC & PE102-220-FSC)	26	*13755	1	O-ring (.55 x .41 Nitrile)
7	251048	1	Bushing (For PE102-FSC, PE102-28-FSC & PE102-220-FSC)		†251035	1	O-ring (.55 x .41 EPR)
8	12515	4	Machine Screw (10-24 x 1 3/4)	27	251280	1	O-ring Boss Plug
9	*207405	4	Locknut (10-24)	28	251043	1	Retaining Ring
10	420607	1	Base Plate	29	201373	1	Retainer Washer
11	350672	2	Trade Name Decal (For PE102-FSC, PE102-28-FSC & PE102-220-FSC)	30	420643	1	Bladder
					†420736	1	Bladder
12	14456	2	Screw (10-24 x 1/2; Place ground wire terminal between cover & housing.)	31	350305	1	Hose Clamp
13	211060	2	Screw (9-15 x 1)	OTHER OPTIONS AND ACCESSORIES			
14	251039	.5 ft.	Motor Mounting Strap	9562	1	Manifold (See Form No. 101344; For PE102-FSC, PE102-28-FSC, PE102-115DC, PE102-220DC & PE102-220-FSC)	
15	251041	3"	Channel Rubber	351240	1	Manifold (For PE102-28-DC & PE102-28-220DC)	
16	251045	1	"D" Bushing Plug (For PE102-FSC, PE102-28-FSC & PE102-220-FSC)				
17	251046	1	Relay (For PE102-FSC, PE102-28-FSC & PE102-220-FSC)				
18	15468	4	Screw (6-32 x 3/8; For PE102-FSC, PE102-28-FSC & PE102-220-FSC)				
19	251049	1	Transformer (For PE102-FSC, PE102-28-FSC & PE102-220-FSC)				



Part numbers marked with an asterisk (*) are contained in Repair Kit No. 300651.
 Part numbers marked with a dagger (†) are contained in EPR Seal Kit No. 300653.

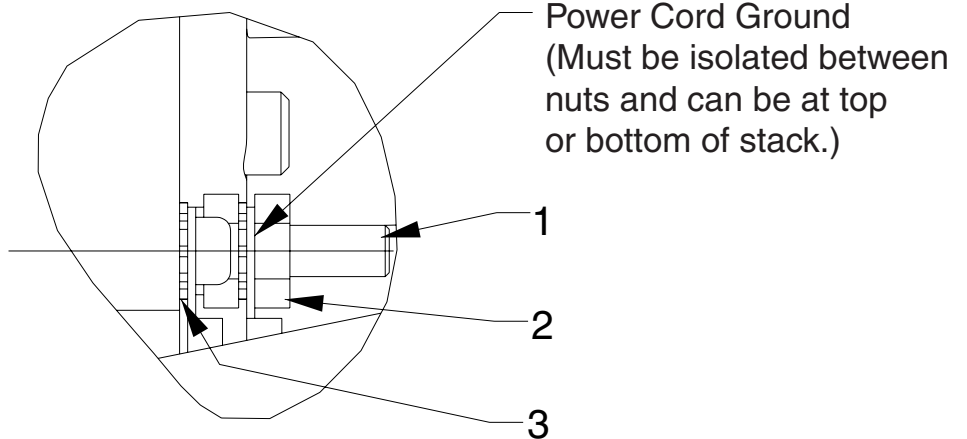
DETAIL FOR 2-WAY VALVE OUTLET CHECK



Item No.	Part No.	No. Req'd	Description
1	209795	1	Outlet Ball Stop
2	*10445	1	Compression Spring (5/32 O.D. X 3/4 Lg.)
3	*12223	1	Ball (3/16 Dia.)

Part numbers marked with an asterisk (*) are contained in Repair Kit No. 300653.

DETAIL V

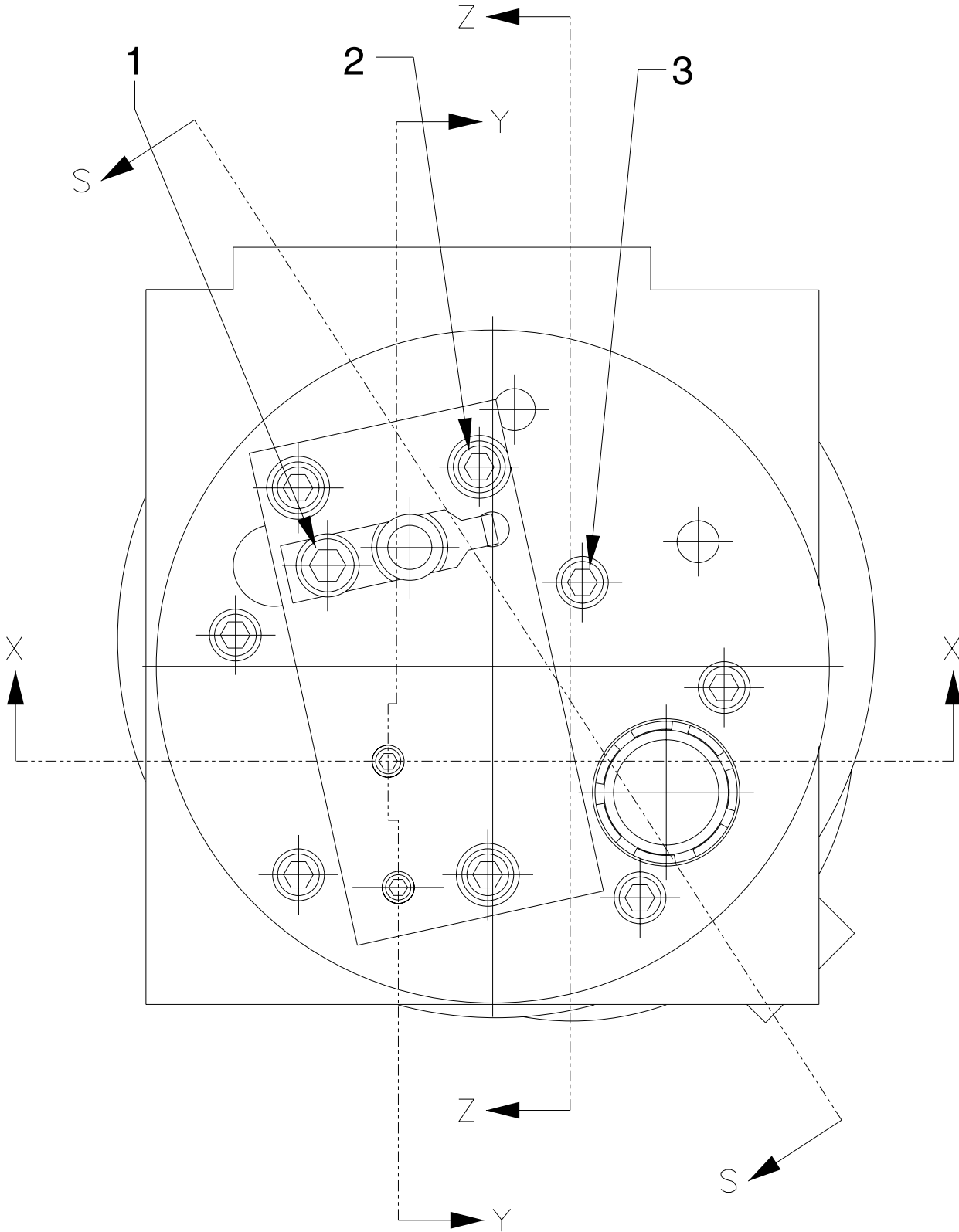


Grd

Note: Serrated lockwasher must be adjacent to pump body.

Item No.	Part No.	No. Req'd	Description
1	12515	1	Machine Screw (#10-24 UNC X 3/4 Lg.)
2	10197	2	Nut (#10-24 UNC)
3	11108	2	Lockwasher (#10 External Tooth)

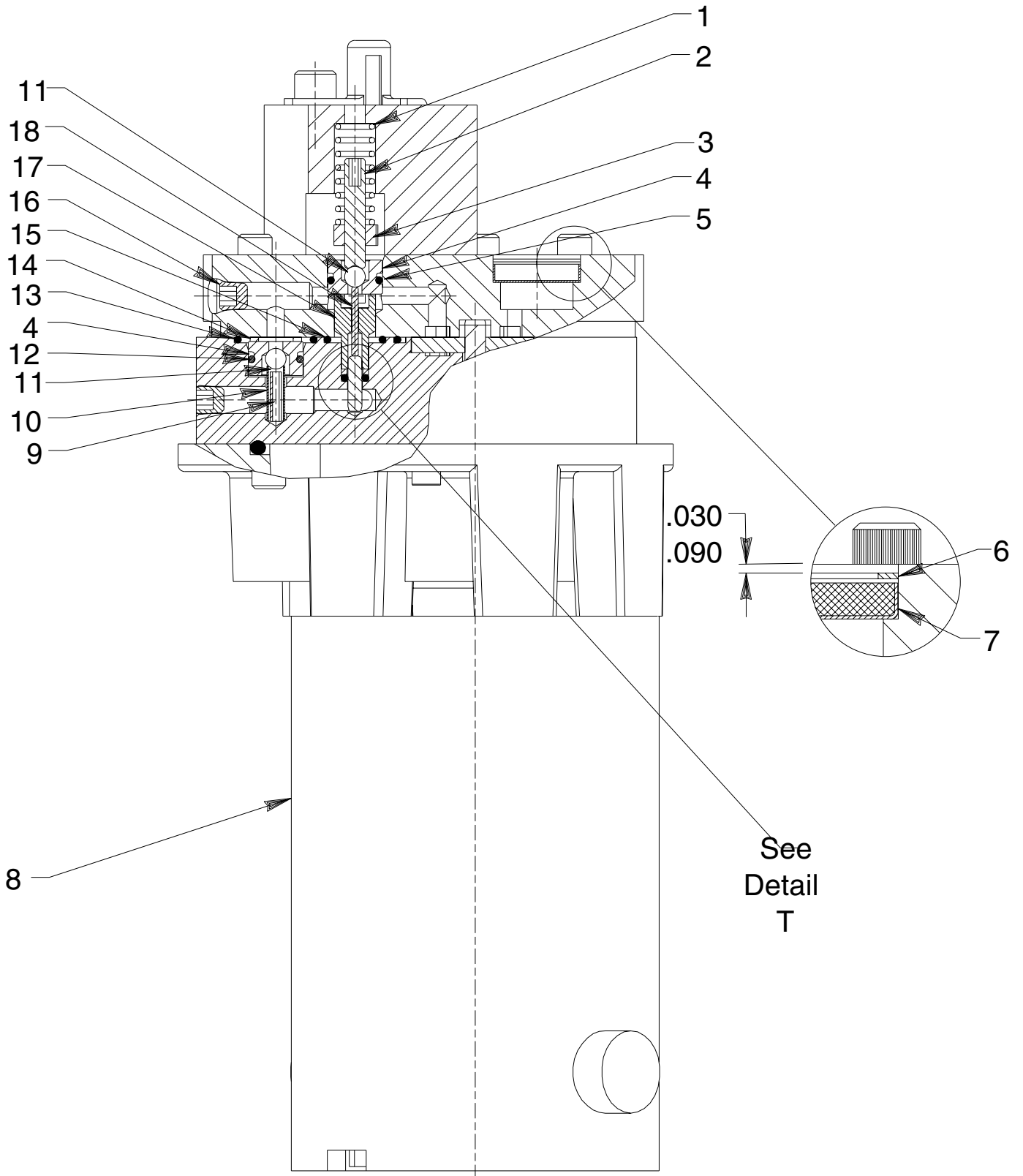
BASIC PUMP ASSEMBLY



Item No.	Part No.	No. Req'd	Description
1	10002	1	Screw (1/4-20 UNC X 3/8 Lg.; Torque to 80/100 in. lbs.)
2	14423	3	Screw (#10-24 X 2" Lg.; Torque to 60/80 in. lbs.)
3	14426	5	Screw (#10-24 UNC X 1" Lg.; Torque to 60/80 in. lbs.)



SECTION X-X



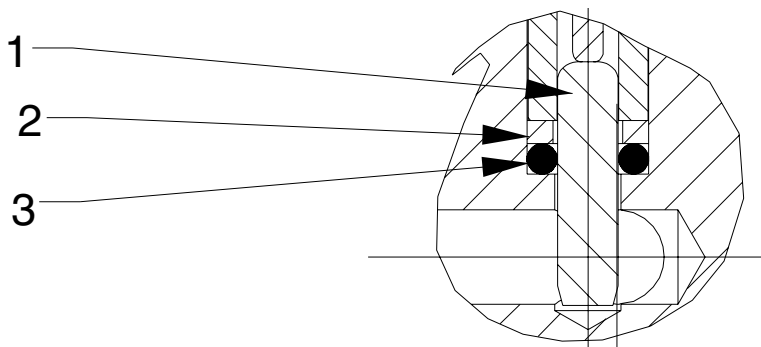
Item No.	Part No.	No. Req'd	Description
1	*14484	1	Compression Spring (3/8 O.D. X 1" Lg.)
2	*251067	1	Set Screw (#10-24 UNC x 1" Lg. Set unloading valve to 400/500 PSI)
3	*207405	1	Locknut (10-24 UNC)
4	*251065	1	Replaceable Seat
5	*10268	1	O-ring (1/2 X 3/8 X 1/16)
	†17716	1	O-ring (1/2 X 3/8 X 1/16)
6	*16686	1	Retaining Ring (Internal)
7	*214578	1	Filter
8	421297-110	1	Motor (For PE102-28-FSC, PE102-28DC, PE102-FSC & PE102-115DC; For replacement brush assembly, order [2] #251114-110)
	421297-220	1	Motor (For PE102-220-FSC, PE102-28-220DC & PE102-220DC; For replacement brush assembly, order [2] #251114-220)
9	11512	1	Roll Pin
10	14431	1	Compression Spring (3/16 O.D. X 5/8 Lg.)
11	*12223	2	Ball (3/16 Dia.)
12	*13943	1	O-ring (1/2 X 3/8 X 1/16)
	†17716	1	O-ring (1/2 X 3/8 X 1/16)
13	*10302	1	O-ring (3/4 X 5/8 X 1/16)
	†12400	1	O-ring (3/4 X 5/8 X 1/16)
14	*11031	1	Copper Washer (15/32 X 5/16 X 1/32)
15	*12098	1	O-ring (9/16 X 7/16 x 1/16)
	†250136	1	O-ring (9/16 X 7/16 x 1/16)
16	15130	3	Plug (1/16 NPTF)
17	251068	1	Guide
18	13937	1	Dowel Pin



Part numbers marked with an asterisk (*) are contained in Repair Kit No. 300651.
Part numbers marked with a dagger (†) are contained in EPR Seal Kit No. 300653.

Note: Shaded areas reflect last revision(s) made to this form.

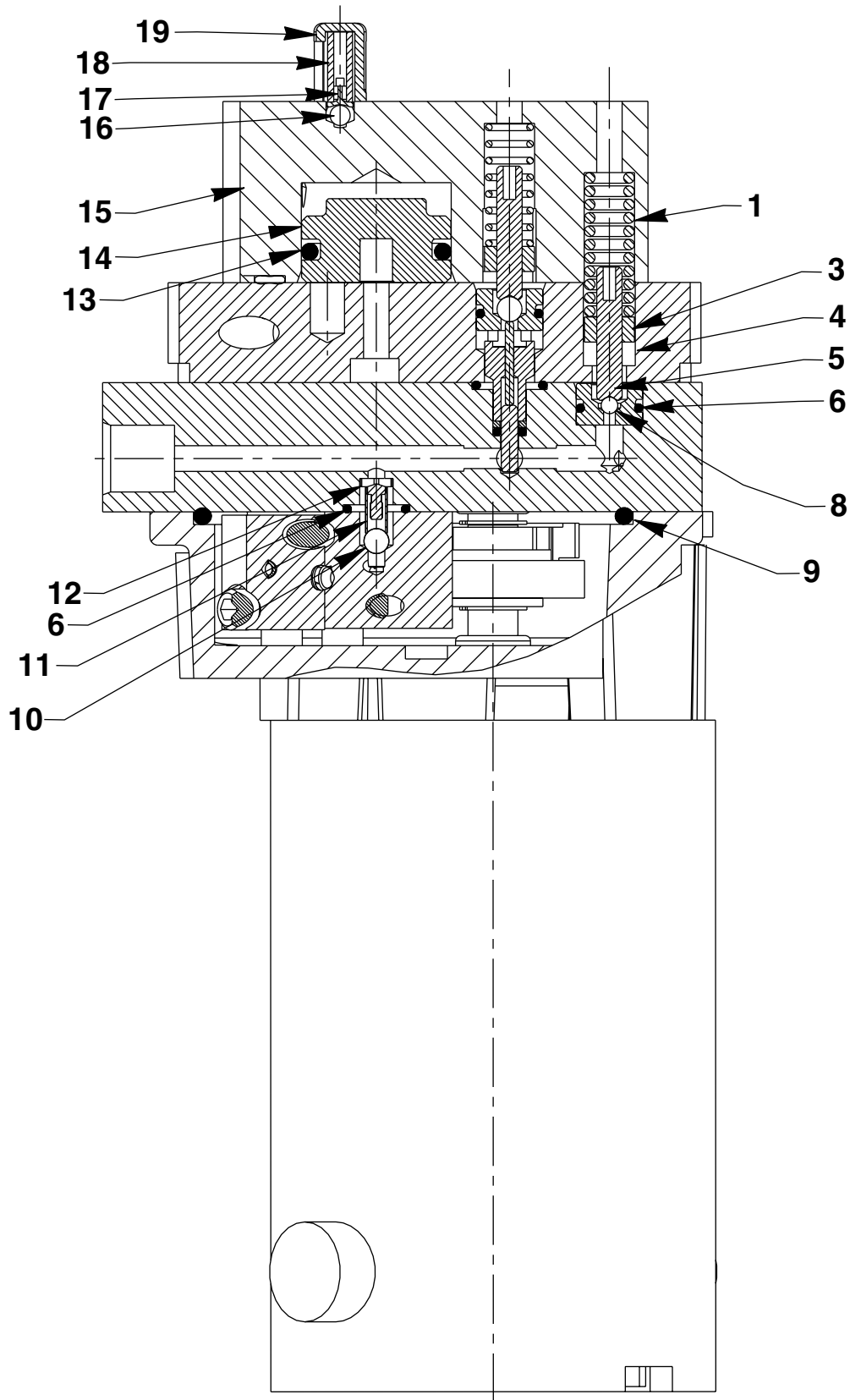
DETAIL T



Item No.	Part No.	No. Req'd	Description
1	10796	1	Dowel Pin
2	*214992	1	Backup Washer (15/64 x 1/8 x 3/64)
3	*17797	1	O-ring (1/4 X 1/8 X 1/16)
	†17713	1	O-ring (1/4 X 1/8 X 1/16)

Part numbers marked with an asterisk (*) are contained in Repair Kit No. 300651.
Part numbers marked with a dagger (†) are contained in EPR Seal Kit No. 300653.

SECTION Y-Y



Item No.	Part No.	No. Req'd	Description
1	*16724	1	Compression Spring (3/8 O.D. x 1-1/4 Lg.)
3	*251067	1	Set Screw (#10-24 UNC x 1" Lg.; Set High Pressure Relief Valve to 10,100/10,700 PSI [2,800/3,200 PSI for PE102-28-DC & PE102-28-220DC])
4	*207405	1	Locknut (10-24 UNC)
5	*251064	2	Replaceable Seat
6	*13943	3	O-ring (1/2 X 3/8 X 1/16)
	†17716	3	O-ring (1/2 X 3/8 X 1/16)
8	*10418	1	Steel Ball (1/8 Dia.)
9	*10297	1	O-ring (3-1/2 X 3 -1/4 X 1/8)
	†13454	1	O-ring (3-1/2 X 3 -1/4 X 1/8)
10	*12223	1	Ball (3/16 Dia.)
11	*10445	1	Compression Spring (5/32 O.D. X 3/4 Lg.)
12	24549	1	Ball Guide
13	*19029	1	O-ring (1-1/8 x 15/16 x 1/8)
	†251288	1	O-ring (1-1/8 x 15/16 x 1/8)
14	350619	1	Eccentric
15	420616	1	Automatic Valve Body
16	*10374	1	Steel Ball (7/32 Dia.)
17	200796	1	Adapter
18	*15691	1	Compression Spring (1/4 O.D. X 5/8 Lg.)
19	350577	1	Spring Retainer



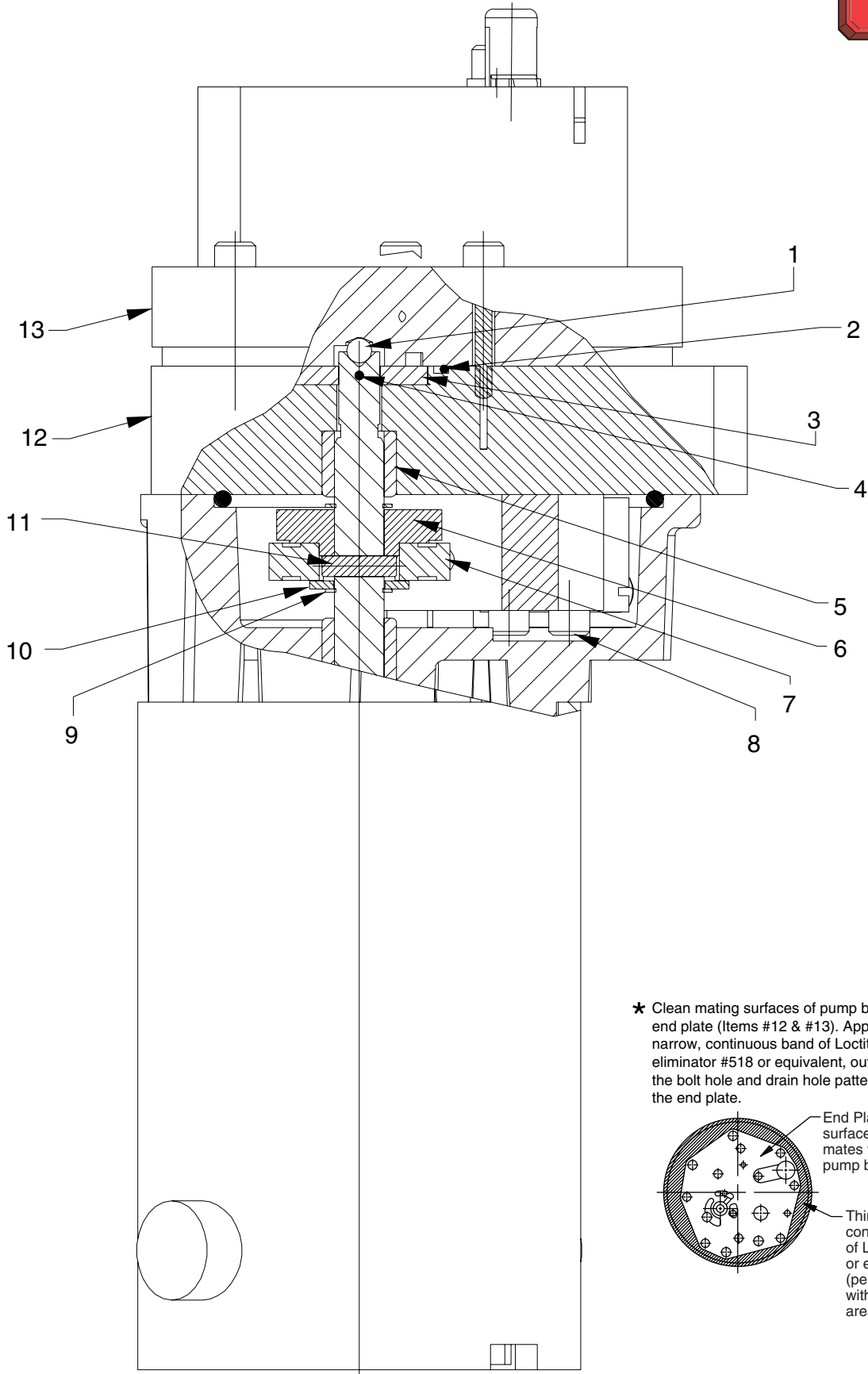
Part numbers marked with an asterisk (*) are contained in Repair Kit No. 300651.
 Part numbers marked with a dagger (†) are contained in EPR Seal Kit No. 300653.

Refer to any operating instructions included with this product for detailed information about operation, testing, disassembly, reassembly, and preventive maintenance.

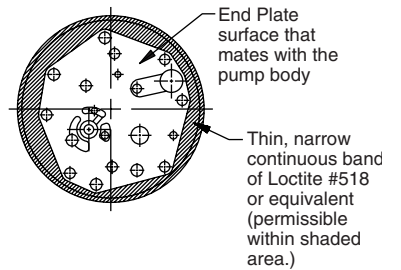
Items found in this parts list have been carefully tested and selected. **Therefore: Use only genuine Power Team replacement parts!**

Additional questions can be directed to our Technical Services Department.

SECTION Z-Z



★ Clean mating surfaces of pump body and end plate (Items #12 & #13). Apply a thin, narrow, continuous band of Loctite gasket eliminator #518 or equivalent, outside of the bolt hole and drain hole patterns on the end plate.

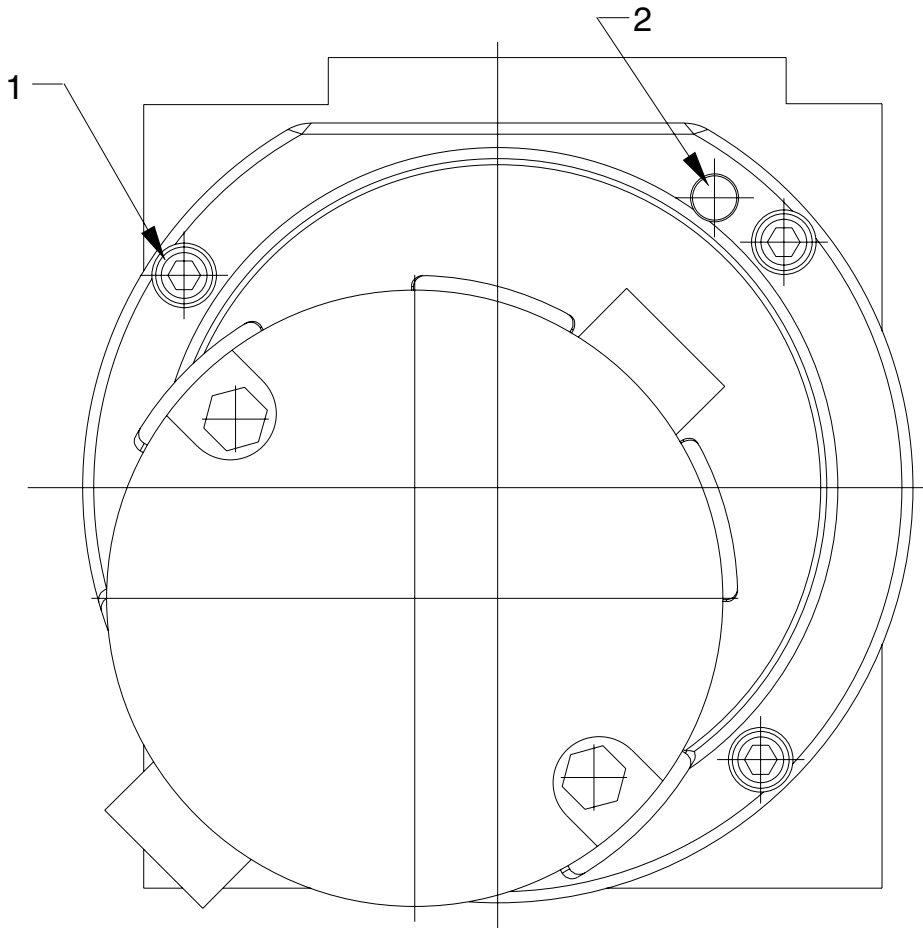


Item No.	Part No.	No. Req'd	Description
1	*12223	1	Ball (3/16 Dia.)
2	*251063	1	O-ring (1-7/16 x 1-5/16 x 1/16)
	†251289	1	O-ring (1-7/16 x 1-5/16 x 1/16)
3	420615	1	Gerotor Set
4	251061	1	Dowel Pin
5	251129	1	Needle Bearing
6	421609	1	Eccentric
7	15695	1	Ball Bearing
8	250491	4	Screw (10-24 UNC x 1-1/4 Lg.; Torque to 60/80 in. lbs.)
9	251069	2	Retaining Ring (Internal)
10	252169	1	Washer (25/64 X 3/4 X 1/16)
11	251117	1	Spring Pin
12	64731	1	Pump Body
13	64347	1	End Plate



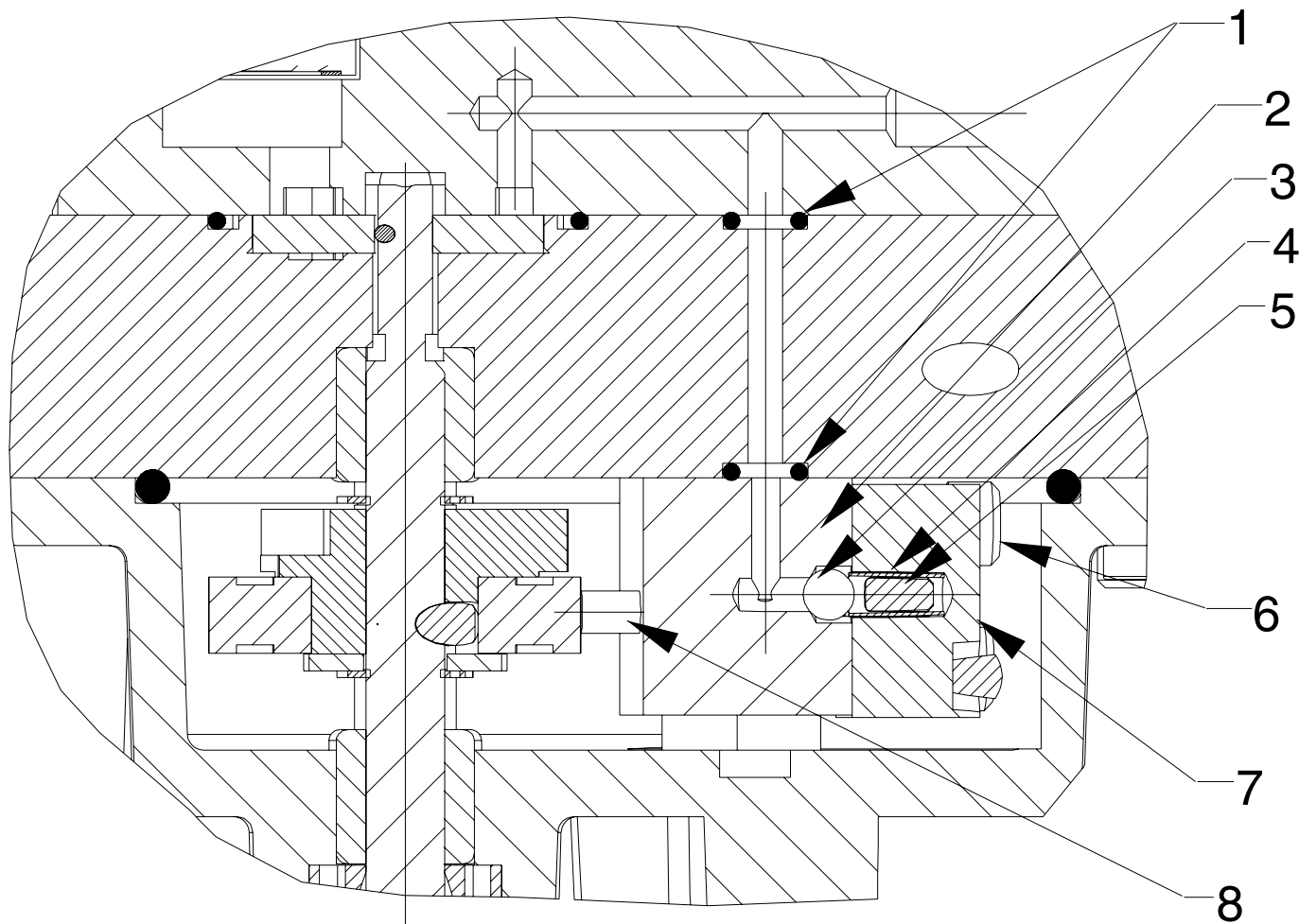
Part numbers marked with an asterisk (*) are contained in Repair Kit No. 300651.
 Part numbers marked with a dagger (†) are contained in EPR Seal Kit No. 300653.

MOTOR END VIEW



Item No.	Part No.	No. Req'd	Description
1	11434	3	Screw (10-24 UNC X 1/2 Lg.; Torque to 60/80 in. lbs.)
2	17567	2	Pin

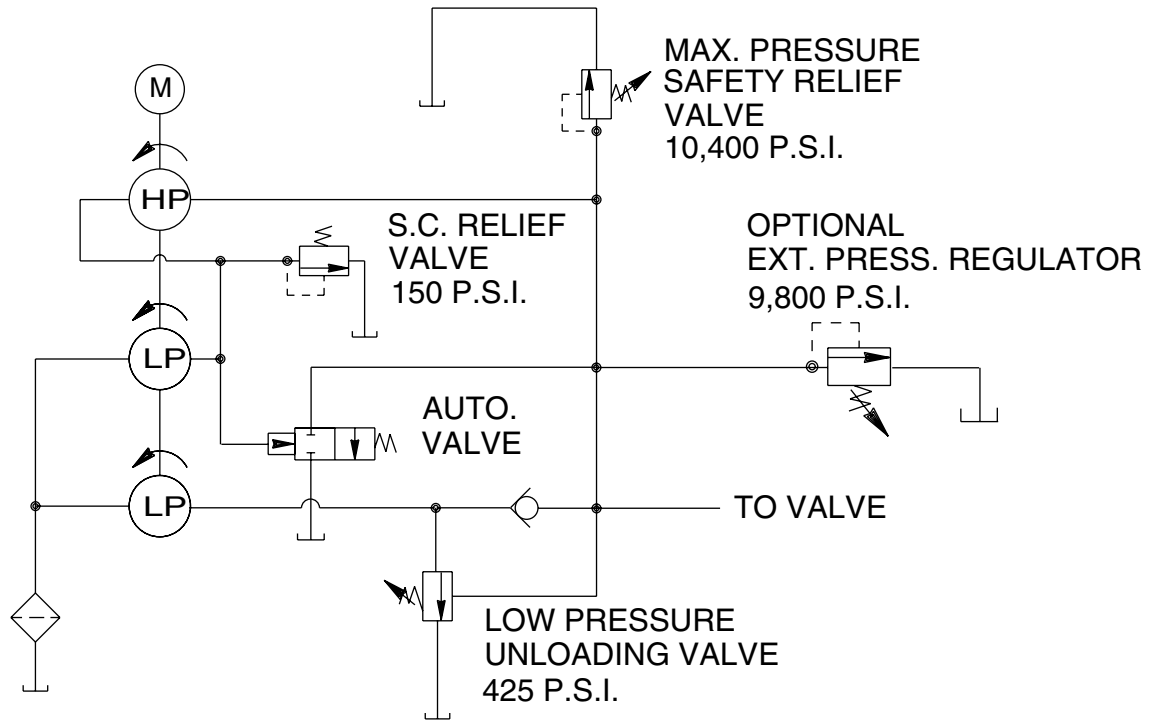
SECTION S-S



Item No.	Part No.	No. Req'd	Description
1	*10265	3	O-ring (5/16 X 3/16 X 1/16)
	†17714	3	O-ring (5/16 X 3/16 X 1/16)
2	420617	1	High Pressure Piston Body
3	*12223	1	Ball (3/16 Dia.)
4	*10445	1	Compression Spring (5/32 O.D. X 3/4 Lg.)
5	251040	1	Dowel Pin
6	12102	3	Screw (#10-24 UNC X 3/4 Lg.; Torque to 60/80 in. lbs.)
7	350620	1	High Pressure Cap Body
8	251062	1	Piston (Position with chamfer towards bearing.)

Part numbers marked with an asterisk (*) are contained in Repair Kit No. 300651.
 Part numbers marked with a dagger (†) are contained in EPR Seal Kit No. 300653.

HYDRAULIC SCHEMATIC



ELECTRICAL INFORMATION

Note: All electrical information and schematics for these units can be found in Form No. 102808 Operating Instructions.