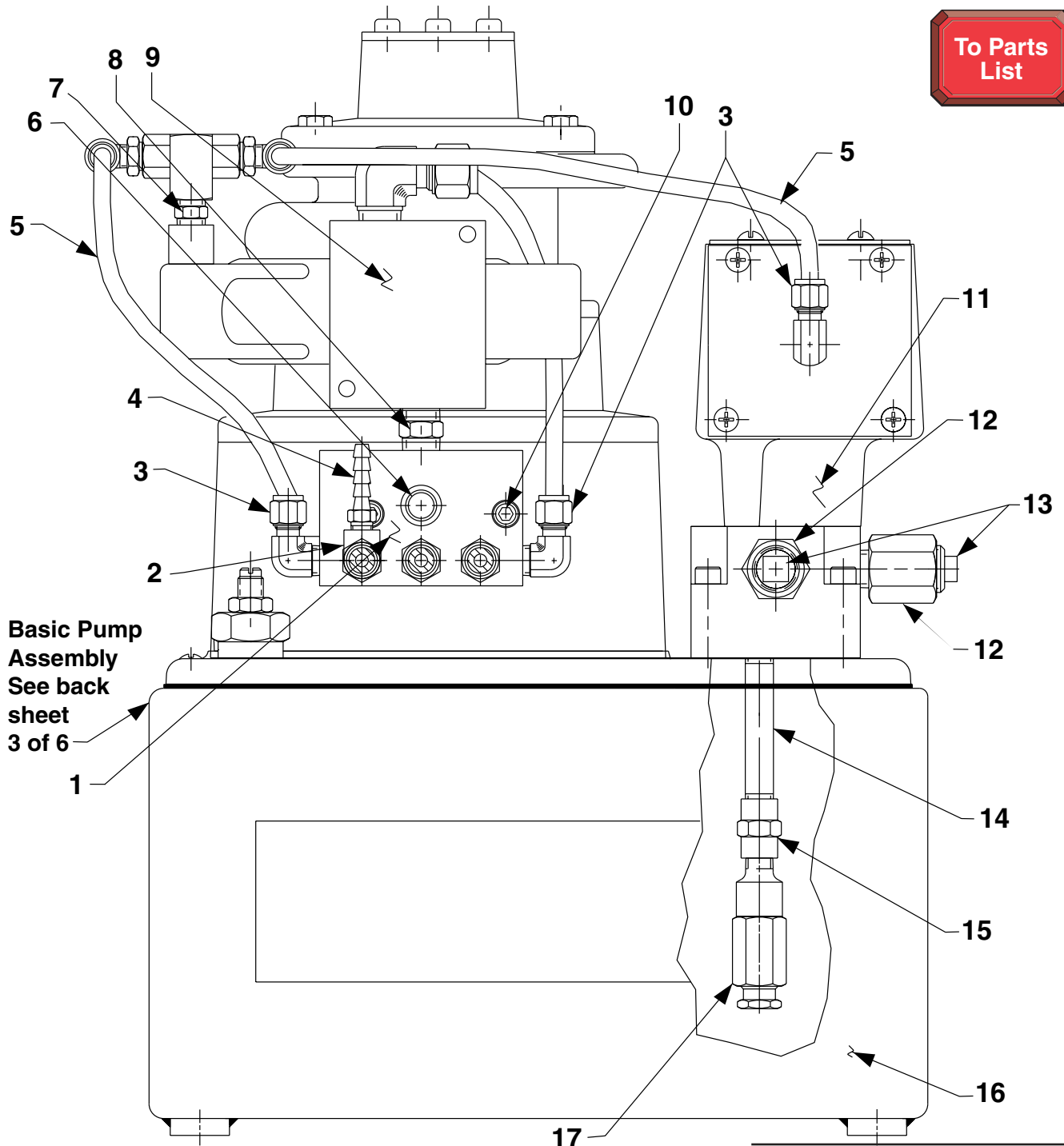


MODEL A

AIR HYDRAULIC PUMP
Max. Capacity: 10,000 PSI



Basic Pump
Assembly
See back
sheet
3 of 6

Note: Shaded areas reflect last revision(s) made to this form.

Sheet No. 1 of 6

Rev. 5 Date: 27 Mar. 2001

Parts List, Form No. 101886, Back sheet 1 of 6

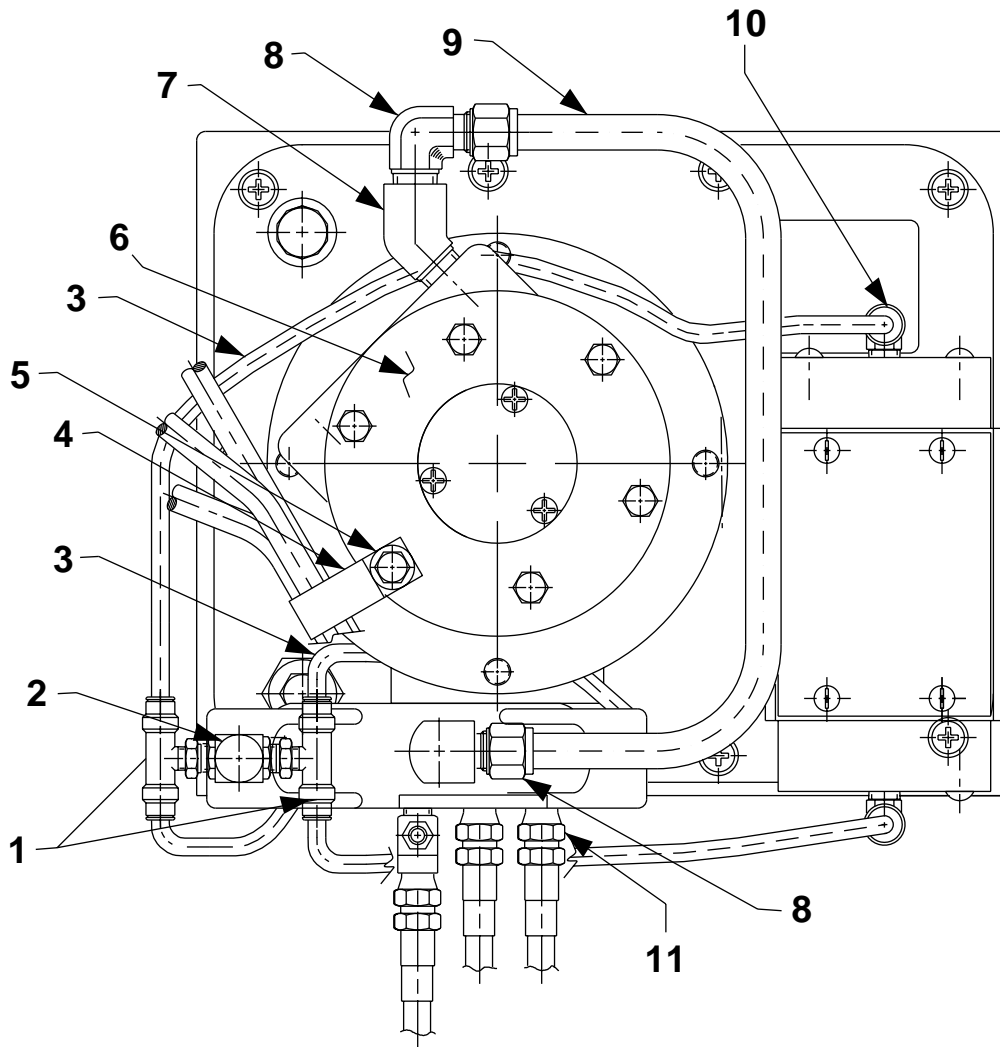
Item No.	Part No.	No. Req'd	Description
1	351443	1	Manifold
2	19463	1	Tee Fitting
3	250463	2	90° Elbow Fitting (1/8 NPTF)
4	15913	1	Hose Fitting
5	15883	18"	Polyethylene Tubing
6	12545	1	Plastic Cap
7	11421	1	Straight Fitting (1/8 NPTF)
8	14056	1	Straight Fitting (3/8 NPTF x 1/2 NPTF)
9	308608	1	Air Operated 2-Way Valve
10	10022	2	Machine Screw (1/4-20 X 1-1/2" Lg.)
11	66208	1	4-Way Pump Mount Air Valve (See Form No. 108068)
12	9689	2	Connector Fitting (For BJ1200B)
	9796	1	Connector Fitting (For BJ150-05B)
13	13273	2	Plug Fitting (3/8 NPTF; For BJ1200B)
14	15456	1	Straight Fitting (1/8 NPTF)
15	18841	1	Straight Fitting (1/8 NPTF)
16	40063GY8	1	Reservoir
17	21278-10	1	Relief Valve (Set at 900/1,000 PSI)



PARTS INCLUDED BUT NOT SHOWN

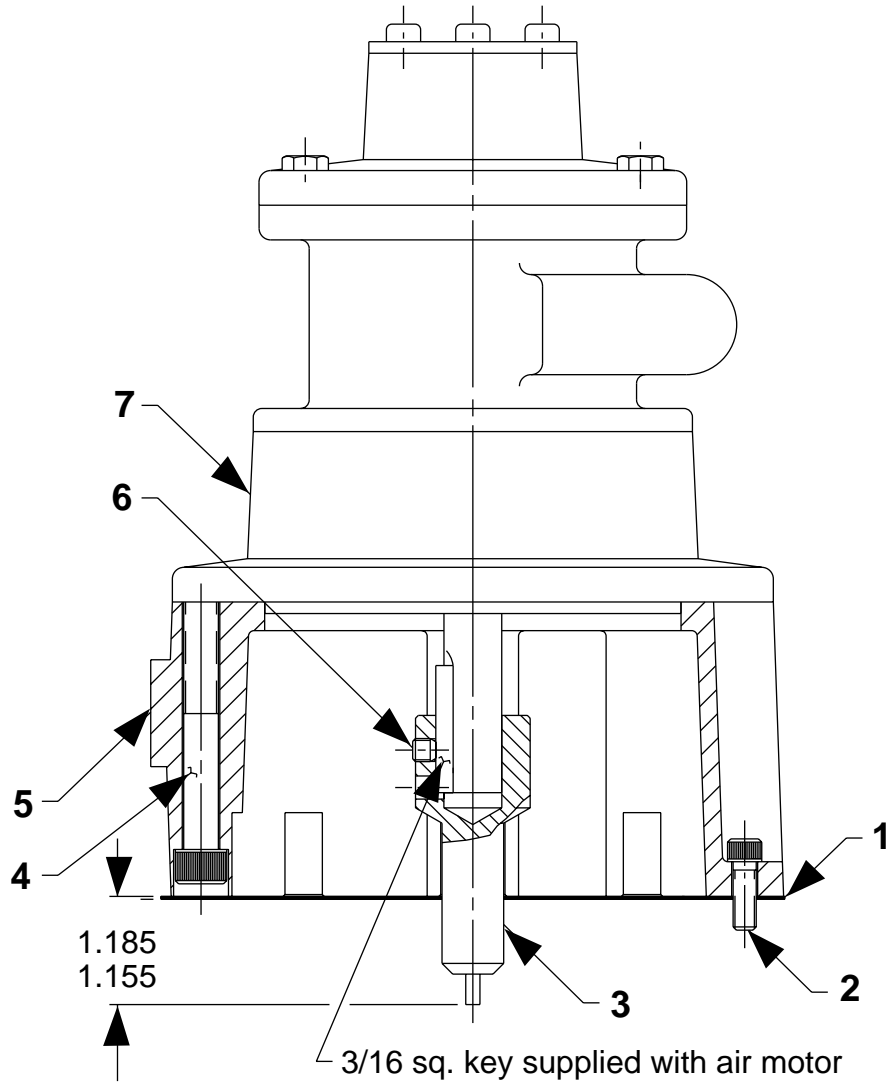
9596	1	Restrictor Valve (See Form #100666; For BJ150-05B)
16254	1	Elbow Fitting (For BJ150-05B)
9680	1	Coupling Fitting (For BJ150-05B)
9677	1	45° Swivel Fitting (For BJ150-05B)

TOP VIEW



Item No.	Part No.	No. Req'd	Description
1	250741	2	Tee Fitting (1/4 Tube)
2	212405	1	Check Valve (1,000 PSI)
3	15883	26.5"	Polyethylene Tubing
4	252291	1	Hose Clamp
5	12719	2	Plain Washer (For 1/4 Bolt)
6	59050	1	Air Motor (See back sheet 2 of 6)
7	253079	1	45° Elbow Fitting
8	252520	2	90° Elbow Fitting (1/2 NPTF)
9	253080	1	Air Line Tube
10	250463	2	90° Elbow Fitting (1/8 NPTF)
11	208218	6	Straight Fitting (1/8 NPTF)

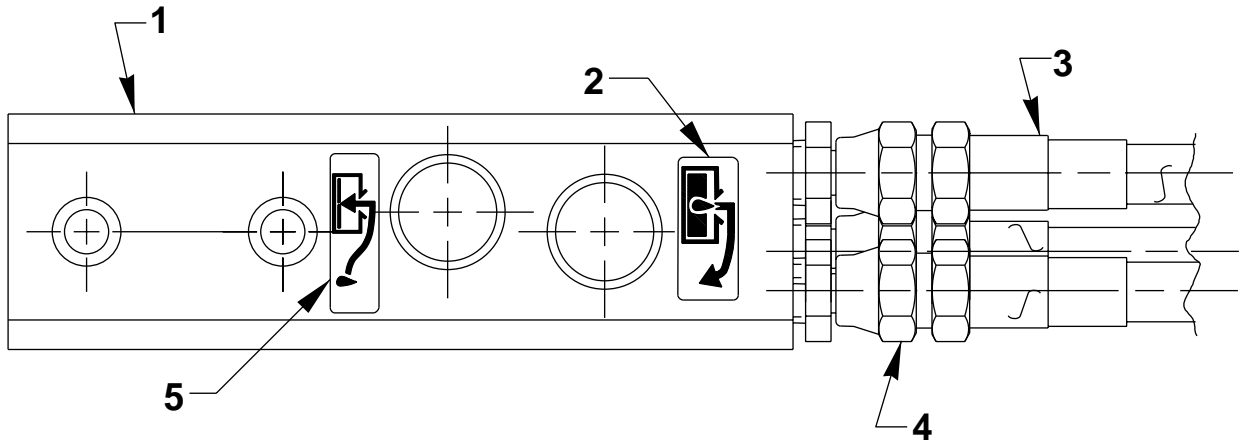
AIR MOTOR ASSEMBLY



Item No.	Part No.	No. Req'd	Description
1	30650	1	Motor Base Gasket
2	10008	4	Screw (1/4-20 x 3/4 Lg.)
3	37842	1	Shaft Extension
4	17816	4	Screw (3/8-16 x 3" Lg.)
5	51158WH2	1	Motor Base
6	10556	1	Set Screw (1/4-20 x 1/3 Lg.)
7	*14717	1	Air Motor (See Form No. 16138)

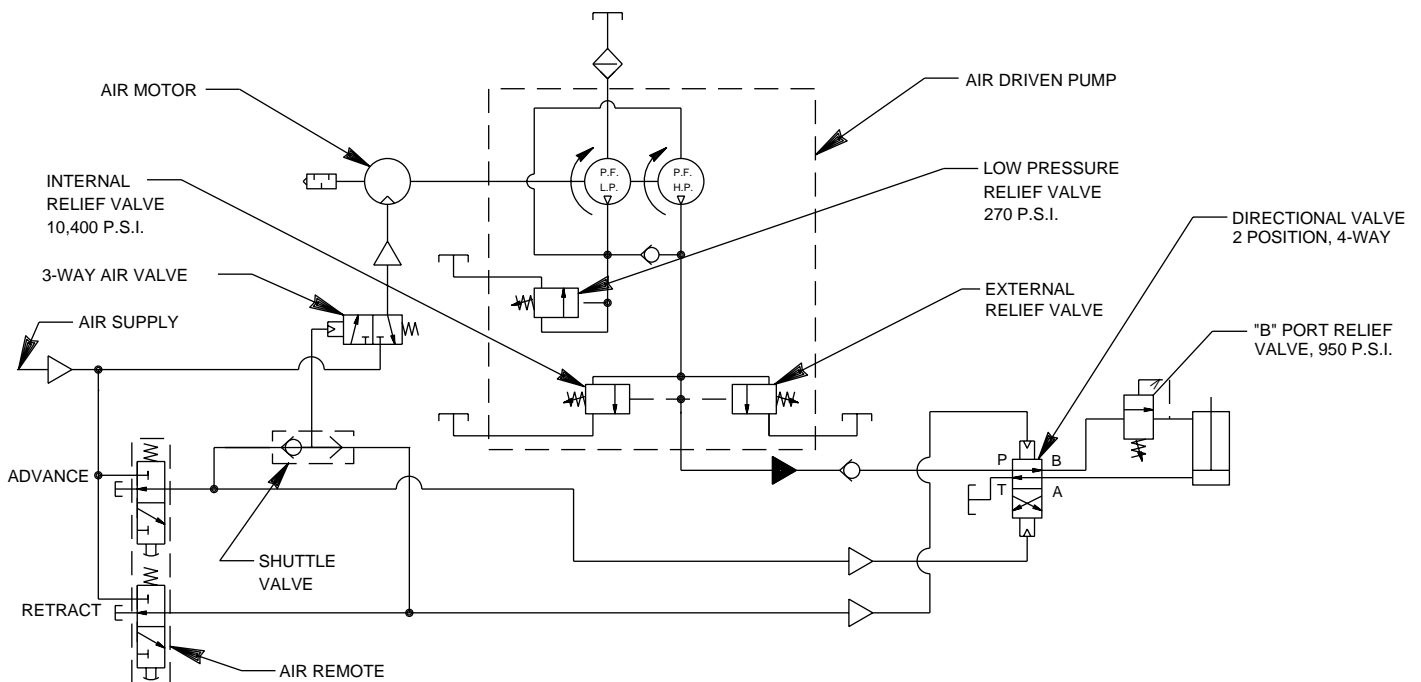
*For air motor replacement parts, order Repair Kit No. 252100.

HAND SWITCH ASSEMBLY



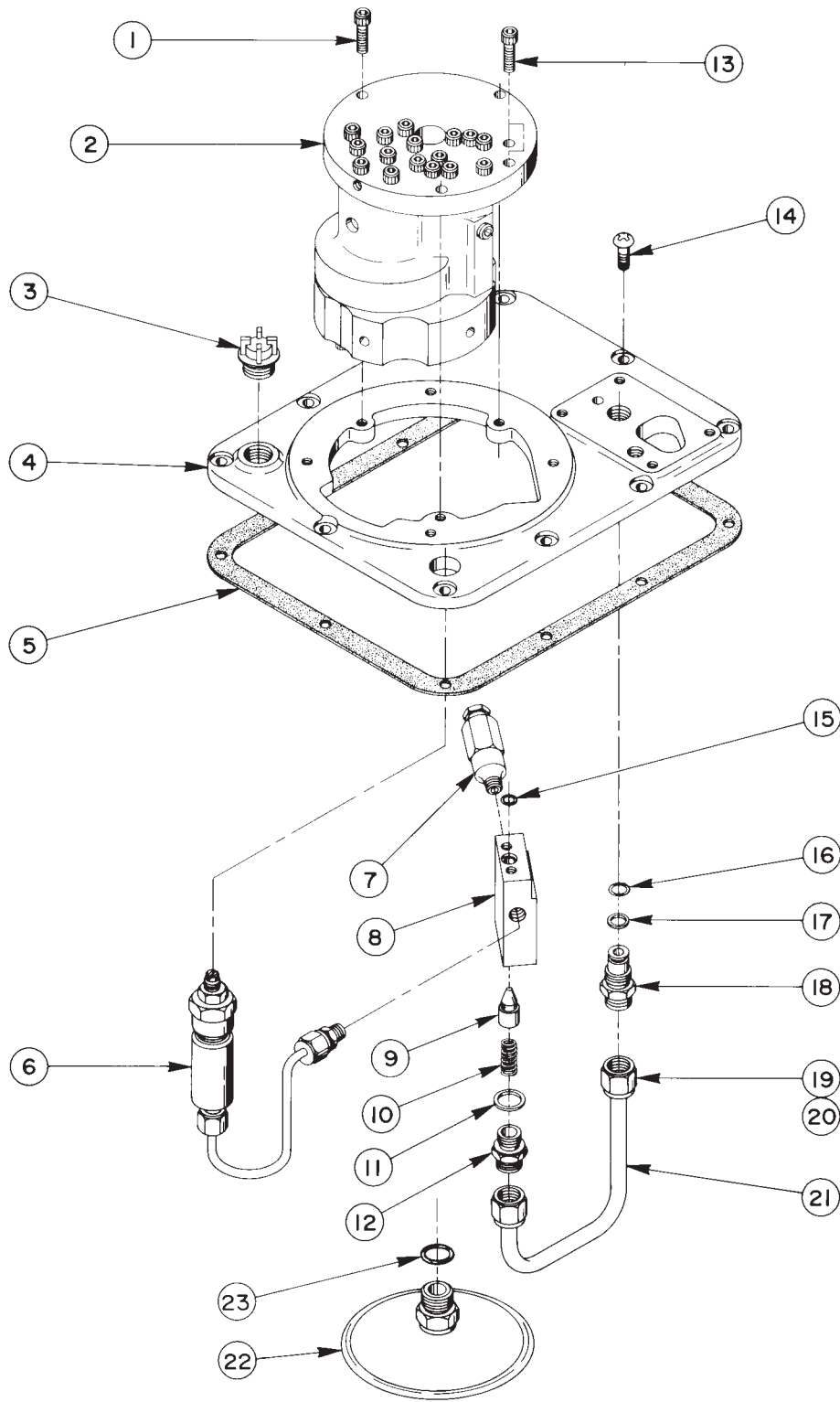
Item No.	Part No.	No. Req'd	Description
1	421265	1	Air Operated Hand Control
2	251759	1	Instruction Decal (Pump)
3	45052	1	Three Strand Hose (12 ft. without spring guards; Note: Connect hose assembly to remote control and pump as shown. Color coded or numbered ends must correspond to numbers on the remote control and pump unit.)
4	208218	3	Straight Fitting (1/8 NPTF)
5	251760	1	Instruction Decal (Release)

HYDRAULIC SCHEMATIC



GENERAL PUMP ASSEMBLY

To Parts List

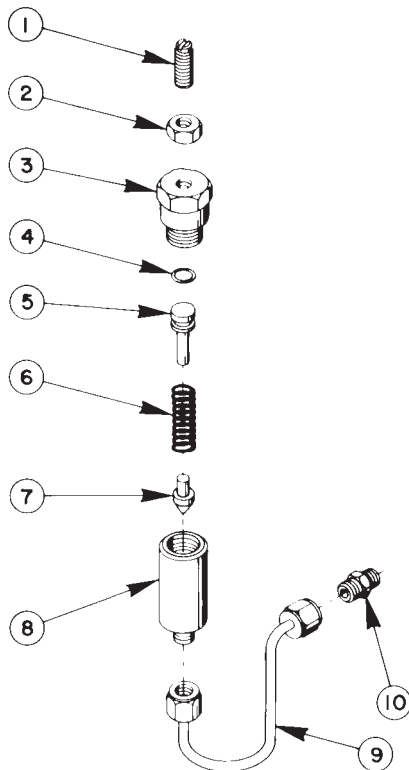


Item No.	Part No.	No. Req'd	Description
1	10016	3	Soc. Hd. Cap Screw (1/4-20 UNC X 1" Lg.)
2	*27206	1	Basic Pump Ass'y Replacement
3	20937	1	Filler Plug
4	40064WH2	1	Cover
5	40164	1	Gasket
6	22360	1	Pressure Regulator Ass'y (See below)
7	21278	1	Relief Valve (Set at 10,100/10,700 PSI)
	21278-50	1	Relief Valve (Set at 5,100/5,700 PSI)
8	20776	1	Valve Body
9	20771	1	Poppet
10	10425	1	Compression Spring (3/8 O.D. X 3/4 Lg.)
11	10261	1	Copper Washer (3/4 X 19/32 X 1/32)

Item No.	Part No.	No. Req'd	Description
12	20770	1	Connector (Torque to 40/45 ft. lbs.)
13	10015	2	Soc. Hd. Cap Screw (1/4-28 UNF X 1" Lg.; Torque to 180 in. lbs.)
14	10177	10	Mach. Screw (1/4-20 UNC X 3/4 Lg.)
15	10266	1	O-ring (3/8 X 1/4 X 1/16)
16	10268	1	O-ring (1/2 X 3/8 X 1/16)
17	11863	1	Teflon Backup Washer (1/2 X 3/8 X 1/16)
18	20787	1	Valve Connector
19	10430	2	Tube Sleeve
20	10431	2	Tube Nut
21	21045	1	Oil Line
22	21345	1	Filter Ass'y (Includes Item 23)
23	10527	1	O-ring (13/16 X .644 X .087)



*Includes all items on back sheet 4 of 6 and items 1, 7, 8, 9, 10, 11, 12, 13, 15 & 22 on this sheet.

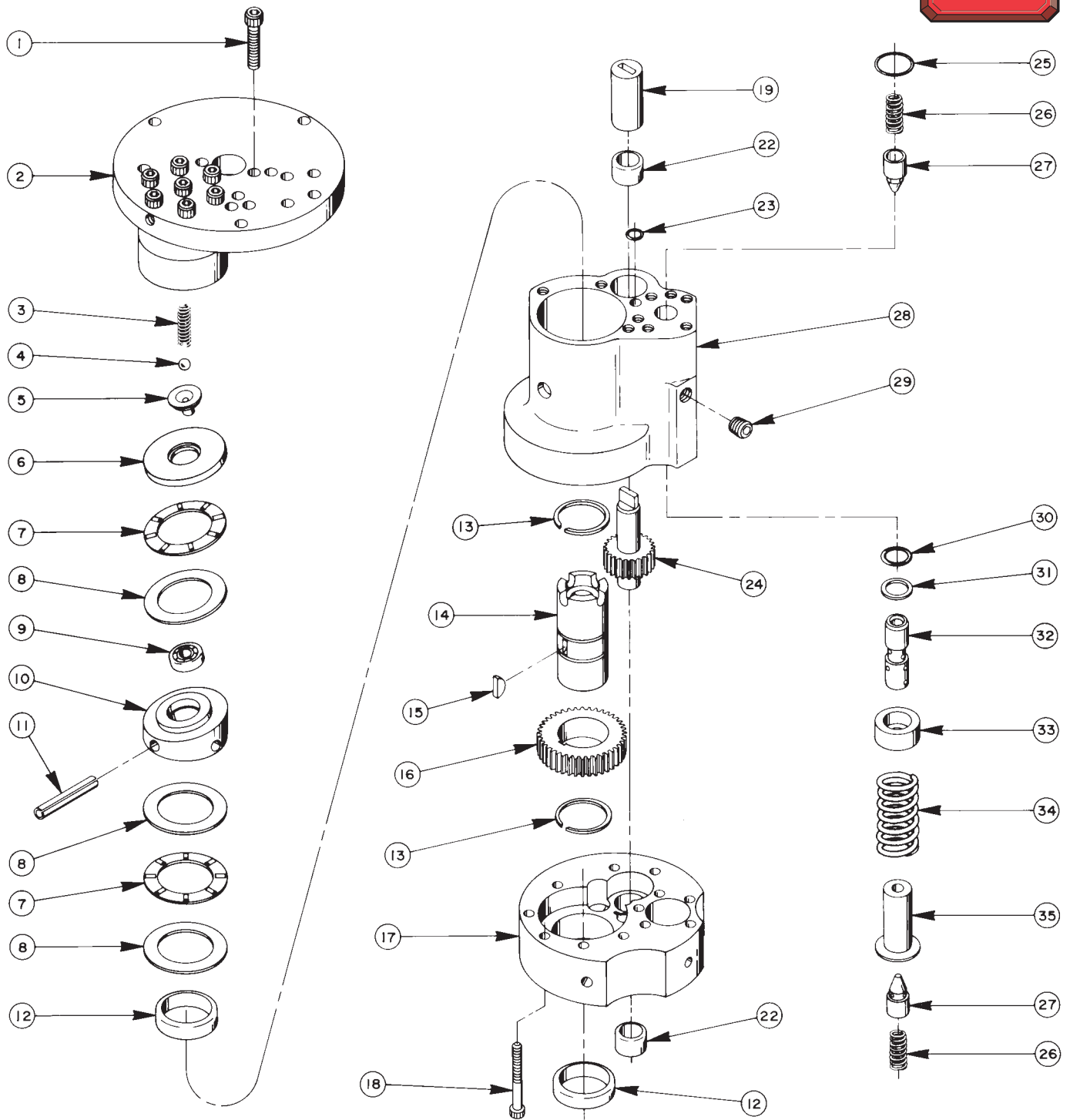


PRESSURE REGULATOR ASSEMBLY

Item No.	Part No.	No. Req'd	Description
1	22362	1	Adjusting Screw
2	10386	1	Hex Jam Nut (3/8-24 UNF)
3	21305	1	Valve Cap
4	10268	1	O-ring (1/2 X 3/8 X 1/16)
5	21306	1	Spring Guide
6	10495	1	Compression Spring
7	21046	1	Valve Stem
8	22361	1	Body
9	29267	1	Oil Line Ass'y (With nuts)
10	14844	1	Connector Fitting

BASIC PUMP ASSEMBLY

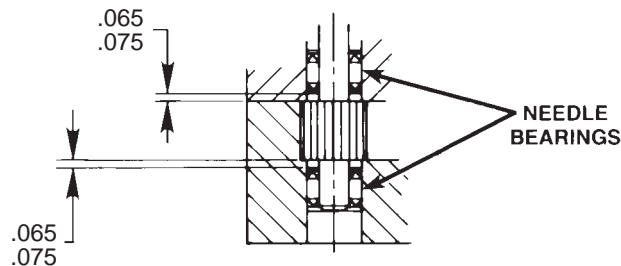
To Parts List



Item No.	Part No.	No. Req'd	Description
1	10020	9	Soc. Hd. Cap Screw (1/4-20 UNC X 1-1/4" Lg.; Torque to 170-180 in. lbs.)
2	33113	1	High Pressure Pump Ass'y (See sheet 6 of 6)
3	10361	1	Compression Spring (1/4 O.D. X 1" Lg.)
4	10375	1	Steel Ball (1/4" Dia.)
5	23547	1	Bearing Top Plate
6	23548	1	Top Plate
7	11228	2	Thrust Bearing
8	11813	3	Bearing Race
9	11814	1	Ball Bearing
10	23549	1	Angle Plate
11	11955	1	Roll Pin
12	11064	2	Needle Bearing
13	11261	2	Retaining Ring
14	23556	1	Shaft
15	11821	1	Woodruff Key
16	23557	1	Gear
17	30533	1	Pump End Plate
18	10001	12	Soc. Hd. Cap Screw (#10-32 UNF X 1-3/4 Lg.; Torque to 50 in. lbs.)
19	251206	1	Aluminum Coupling
22	11199	2	Needle Thrust Bearing (See note below)
23	10266	1	O-ring (3/8 X 1/4 X 1/16)
24	21272	1	Drive Gear
25	10303	1	O-ring (7/8 X 3/4 X 1/16)
26	10425	2	Compression Spring (3/8 O.D. X 3/4 Lg.)
27	20771	2	Poppet
28	40120	1	Pump Body
29	10427	1	Pipe Plug (1/8" NPTF)
30	10271	1	O-ring (11/16 X 1/2 X 3/32)
31	12389	1	Teflon Backup Washer (11/16 X 1/2 X 1/16)
32	20849	1	Spool
33	23255	1	Spring Guide
34	10426	1	Compression Spring (1" O.D. X 1-13/16 Lg.)
35	23256	1	Spring Guide



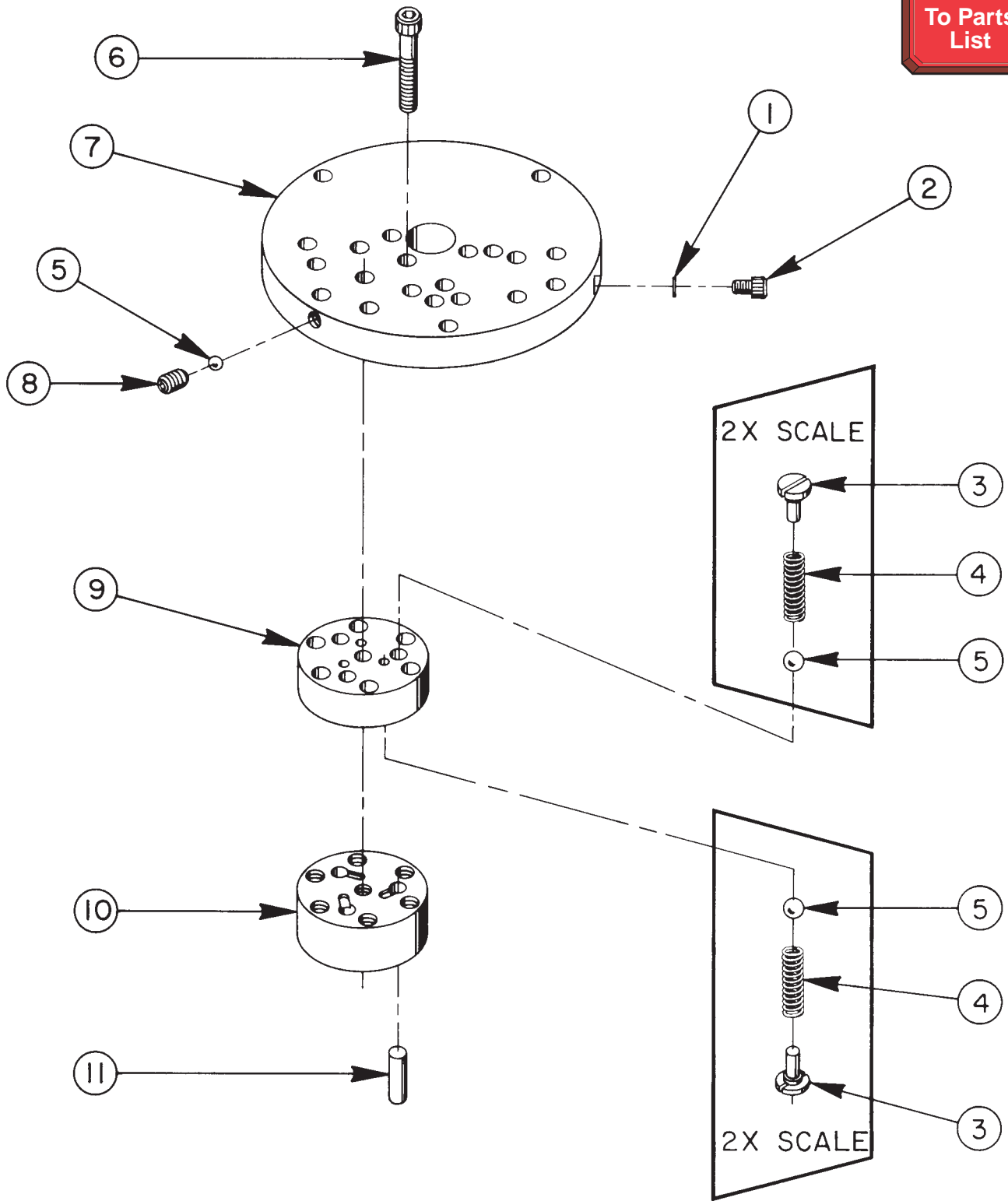
NEEDLE BEARING INSTALLATION SPECIFICATIONS



When replacing the needle bearings on the drive gear of the basic pump, the dimensions shown must be as specified.

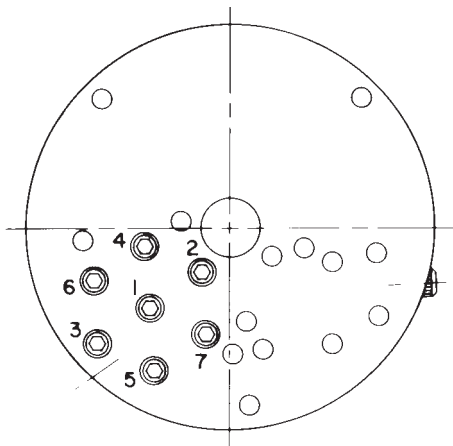
HIGH PRESSURE PUMP ASSEMBLY

To Parts List



33113 PUMP ASSEMBLY
3 Pistons - 9/32 Dia.

Item No.	Part No.	No. Req'd	Description
1	10442	1	Copper Washer (3/8 X 1/4 X 1/32)
2	10002	1	Soc. Hd. Cap Screw (1/4-20 UNC X 3/8" Lg.; Torque to 140/160 in. lbs.)
3	24549	6	Valve Guide
4	10445	6	Compression Spring (5/32" O.D. X 3/4" Lg.)
5	12223	7	Steel Ball (3/16" Dia.)
6	10023	7	Soc. Hd. Cap Screw (1/4-28 UNF X 1-1/2 Lg.; Torque to 170/180 in. lbs.; See note below)
7	50411	1	Top Plate
8	10519	1	Soc. Set Screw (1/4-20 UNC X 3/8 Lg.; Torque to 65/70 in. lbs.)
9	40630	1	Valve Head
10	41062	1	Pump Barrel
11	21628	3	Piston



BOLT TIGHTENING SEQUENCE

NOTE: Assemble in sequence shown.
 Lubricate under head and on threads.
 Torque to 180 in. lbs.