

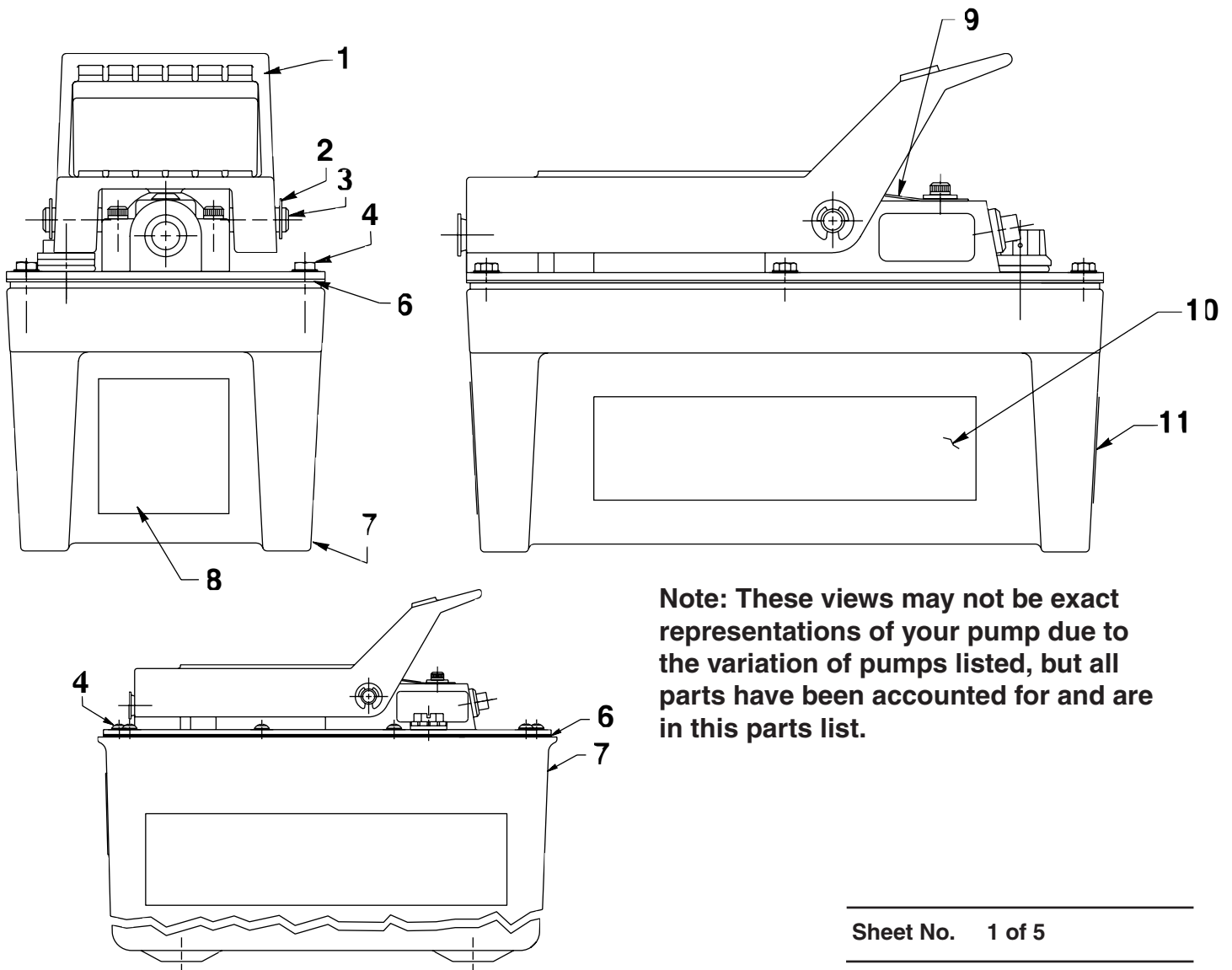
MODEL G
AIR HYDRAULIC PUMP

This section is for these following models:

- | | |
|---------|--------------------------|
| PA50 | PA50E |
| PA50-CM | PA50M |
| PA50-2E | PA50N |
| PA50-2N | PA50V |
| PA50-2V | 70-130 (PA50M-DE-STA-CO) |
| | 66516 |



- More models are listed in Parts List 101954 and 101955.



Note: These views may not be exact representations of your pump due to the variation of pumps listed, but all parts have been accounted for and are in this parts list.

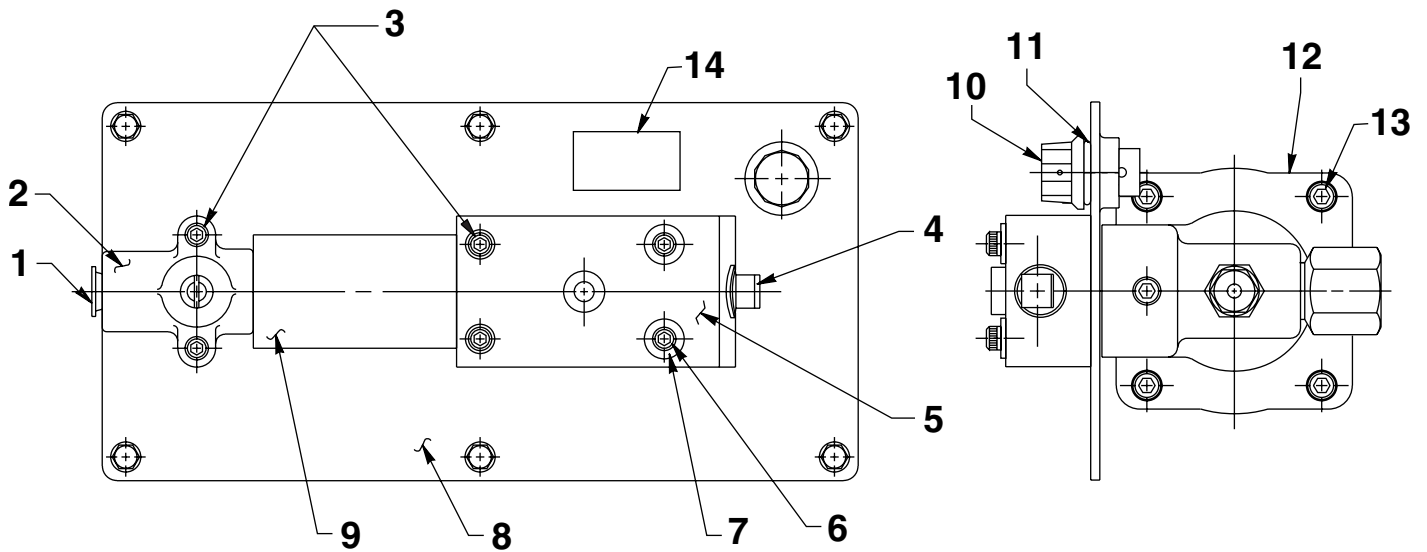
Parts List, Form No. 101887, Back sheet 1 of 5

Item No.	Part No.	No. Req'd	Description
1	41322	1	Foot Pedal
	47696BK2	1	Hand Pedal (For 66516)
2	*11032	2	Retaining Ring (.30 X .35)
3	28386	1	Pin (For foot pedeal versions)
	215709	1	Pin (For 66516)
4	211060	6	Screw (9-15 X 1" ; Torque to 25/35 in. lbs.; For plastic reservoir)
	215952	6	Screw (10-24 X 5/8; For metal reservoir)
	252952	12	Screw (1/4-20 x 3/4; For 66516)
6	*33853	1	Reservoir Gasket (For all except PA50-2E, PA50-2V & PA50-2N)
	*47409	1	Reservoir Gasket (For PA50-2E, PA50-2V & PA50-2N)
	46271	1	Reservoir Gasket (For 66516)
7	61243	1	Reservoir (Plastic)
	41300WH2	1	Reservoir (Metal)
	64153BK2	1	Reservoir (For 66516)
8	305494	1	Instruction Decal (Oil Lub.; For PA50-2E, PA50-2N, PA50-2V & 66516)
9	302466	1	Spring Clip (For all except 66516)
10	305496CE	1	Trade Name Decal (For PA50, PA50-CM, PA50M & 70-130 [PA50M-DE-STA-CO])
11	251762	1	Warning Decal (For PA50, PA50E, PA50M, PA50N, PA50V & 66516)
	251762-CE	1	Warning Decal (For 70-130 [PA50M-DE-STA-CO])

Part numbers marked with an asterisk (*) are contained in a repair kit see sheet 5 of 5 for individual repair kit information.



TOP & END VIEWS



Note: These views may not be exact representations of your pump due to the variation of pumps listed, but all parts have been accounted for and are in this parts list.

Refer to any operating instructions included with this product for detailed information about operation, testing, disassembly, reassembly, and preventive maintenance.

Items found in this parts list have been carefully tested and selected. **Therefore: Use only genuine Power Team replacement parts!**

Additional questions can be directed to our Technical Services Department.

Parts List, Form No. 101887, Back sheet 2 of 5

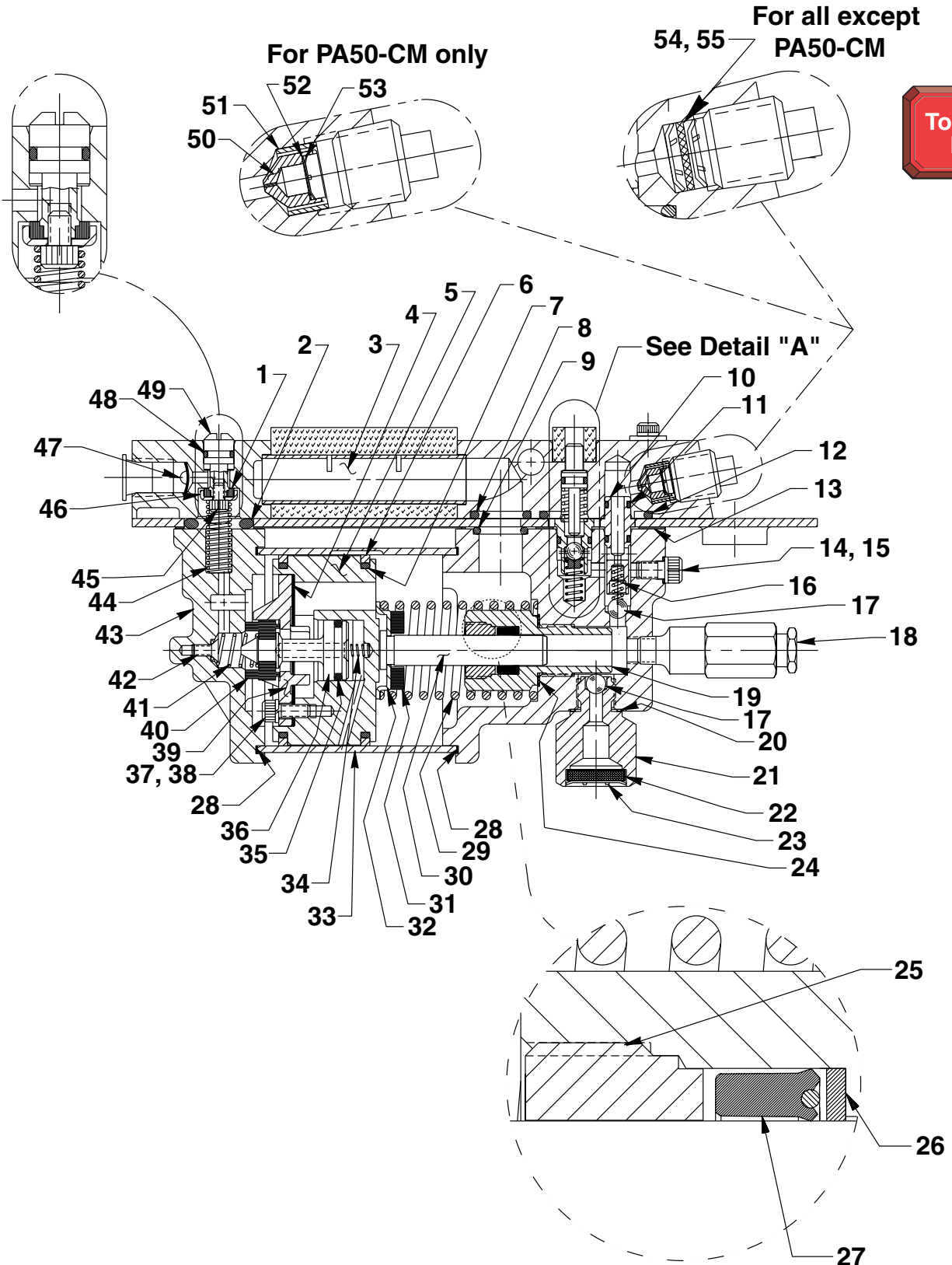
Item No.	Part No.	No. Req'd	Description
1	14794	1	Plastic Cap
2	37199	1	Air Intake Valve Body
3	11151	4	Cap Screw (10-24 X 1-1/4"; Torque to 50/60 in. lbs.)
4	11127	1	Pressure Plug (3/8 NPTF)
5	58563	1	Release Valve Body
6	11435	2	Soc. Hd. Cap Screw (10-24 X 1-3/4"; Torque to 50/60 in. lbs.)
7	11089	2	Washer (#10 bolt)
8	420965BK2	1	Cover Plate (For all except PA50-2E, PA50-2, PA50-2V & 66516)
	58706BK2	1	Cover Plate (For PA50-2E, PA50-2N & PA50-2V)
	58688BK2	1	Cover Plate (For 66516)
9	*29992	1	Foam Tube
10	251689	1	Breather/Filler Cap
11	*10273	1	O-ring (.81 X .62; For all except PA50-2E, PA50-2V, PA50E & PA50V)
	18999	1	O-ring (.81 X .62; Viton; For PA50-2V & PA50V)
	250157	1	O-ring (.81 X .62; EPR; For PA50-2E & PA50E)
12	64767	1	Pump Body
13	17428	4	Soc. Hd. Cap Screw (1/4-20 X 3-1/2"; Torque to 85/95 in. lbs. oiled. Note: Cross torque in increments of 30 in. lbs.)
14	205724	1	Attention Decal (For PA50-2V & PA50V)
	250328	1	Attention Decal (For PA50-2E & PA50E)



Part numbers marked with an asterisk (*) are contained in a repair kit see sheet 5 of 5 for individual repair kit information.

BASIC PUMP ASSEMBLY

Note: These views may not be exact representations of your pump due to the variation of pumps listed, but all parts have been accounted for and are in this parts list.



Parts List, Form No. 101887, Back sheet 3 of 5

Item No.	Part No.	No. Req'd	Description	Item No.	Part No.	No. Req'd	Description
1	*28182	1	Air Valve Poppet	18	-----	-	Relief Valve (When ordering a replacement relief valve refer to stamped number on the outside of the relief valve. See note below. Apply loctite 592 [Power Team #905516] or equiv. & torque to 150/170 in. lbs.)
2	*251717	1	O-ring (1.0 X .62; For all except PA50E, PA50V, PA50-2E & PA50-2V)	19	421642	1	Piston Cylinder (Torque to 90/100 ft. lbs. oiled.)
	251718	1	O-ring (1.0 X .62; For PA50-2V & PA50V)	20	*10261	1	Copper Washer (.75 X .60)
	251719	1	O-ring (1.0 X .62; For PA50-2E & PA50E)	21	48010	1	Filter Adapter (Torque to 40/50 ft. lbs. oiled.; For all except PA50-2E, PA50-2N & PA50-2V; See back sheet 4 of 5 with 2 gal. reservoirs.)
3	28387	1	Muffler	22	214578	1	Filter (For all reservoir sizes except 2 gal. reservoirs built after June 1, 1998)
4	*28239	1	Gasket	23	214586	1	Retaining Ring (Internal; .63 X .015; For all reservoir sizes except 2 gal. reservoirs built after June 1, 1998)
5	52390	1	Piston Body	24	*10263	1	Copper Washer (1.0 X .77)
6	*14265	2	Piston Ring (2.77 X 2.54)	25	*351662	1	Retainer (See "INSTRUCTIONS FOR RETAINER REPLACEMENT" on sheet 5 of 5.)
7	*251835	2	O-ring (2-1/2" X 2-5/16" X 3/32 Nitrile; For all except PA50-2E, PA50-2V, PA50E & PA50V)	26	*12488	1	Backup Washer
	251865	2	O-ring (2.31 X 2.12; For PA50-2V & PA50V)	27	*253095	1	U-cup
	251866	2	O-ring (2.31 X 2.12; For PA50-2E & PA50E)	28	*17429	2	Backup Washer (2.94 X 2.75)
8	*10276	1	O-ring (1.0 X .75; For all except PA50-2E, PA50-2V, PA50E & PA50V)	29	*13938	1	Compression Spring (1.45 O.D. X 4.4)
	19026	1	O-ring (1.0 X .75; For PA50-2V & PA50V)	30	28400	1	Piston (7/16")
	250188	1	O-ring (1.0 X .75; For PA50-2E & PA50E)	31	202613	1	Bumper
9	*10272	1	O-ring (.75 X .56; For all except PA50-2E, PA50-2V, PA50E & PA50V)	32	211082	1	Spring Guide
	18998	1	O-ring (.75 X .56; For PA50-2V & PA50V)	33	37434	1	Air Cylinder (Note: Locate groove on upper half (top) of pump with chamfered tube end towards rear head as shown.)
	250194	1	O-ring (.75 X .56; For PA50-2E & PA50E)	34	*12692	1	Compression Spring (.18 O.D. X 1.70)
10	34378	1	Check Valve Body	35	*211052	1	O-ring (.90 X .70; For all except PA50-2E, PA50-2V, PA50E & PA50V)
11	*12522	2	O-ring (.37 X .25; Urethane For all except PA50-2E, PA50-2V, PA50E & PA50V)	250192	1	O-ring (.90 X .70; For PA50V & PA50-2V)	
	11438	2	O-ring (.37 X .25; For PA50V & PA50-2V)	250193	1	O-ring (.90 X .70; For PA50E & PA50-2E)	
	17715	2	O-ring (.37 X .25; For PA50E & PA50-2E)	36	305475	1	Exhaust Valve Stem
12	*11841	1	O-ring (1.62 X 1.37; For all except PA50-2E, PA50-2V, PA50E & PA50V)	37	*10241	3	Lockwasher (.33 X .20)
	19035	1	O-ring (1.62 X 1.37; For PA50V & PA50-2V)	38	211054	3	Screw (10-24 X 1/2; Torque to 50/55 in. lbs.)
	251695	1	O-ring (1.63 X 1.38; For PA50E & PA50-2E)	39	33822	1	Piston End Plate
13	*351021	1	Cover Plate Gasket	40	*28183	1	Piston Poppet
14	*10442	1	Copper Washer (.37 X .25)	41	*205679	1	Compression Spring (.49 O.D. X .92)
15	10002	1	Screw (1/4-20 X 3/8; Torque to 90/110 in. lbs.)				
16	*10445	1	Compression Spring (.16 O.D. X .72)				
17	*10423	2	Steel Ball (9/32 Dia.)				

Part numbers marked with an asterisk (*) are contained in a repair kit see sheet 5 of 5 for individual repair kit information.

-Continued-

NOTE:

Standard relief valves are set at 10,100/10,700 PSI.
Relief valves pre-set at special settings are available.

Refer to your pump model number or contact Power Team Technical Services.

Note: Shaded areas reflect last revision(s) made to this form.



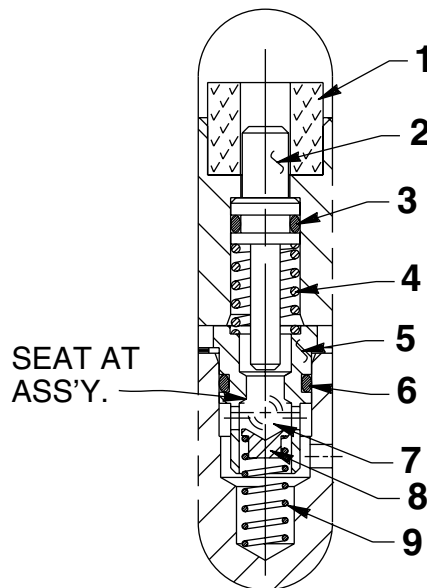
Item No.	Part No.	No. Req'd	Description
42	*205674	1	Screw (8-32 UNC X 3/8; Torque to 12/18 in. lbs.)
43	51480	1	Rear Head
44	12691	1	Compression Spring (.36 O.D. X 1.5)
45	13936	1	Screw (8-32 X 1/4)
46	28198	1	Seal Guide
47	*216296	1	Filter Disc (Not part of 66516)
48	*10267	1	O-ring (.43 X .31; For all except PA50-2E, PA50-2V, PA50V & PA50E)
	18974	1	O-ring (.43 X .31; For PA50V & PA50-2V)
	13472	1	O-ring (.43 X .31; For PA50E & PA6-50E)
49	33841	1	Actuator Button
50	215868	1	Poppet (For PA50-CM)
51	214583	1	Retaining Sleeve (For PA50-CM)

Item No.	Part No.	No. Req'd	Description
52	214596	1	Filter Disc (For PA50-CM)
53	12201	1	Internal Retaining Ring (.18 X .010; For PA50-CM)
54	*11088	2	Internal Retaining Ring (.31 X .010; For all except PA50-CM)
55	*250638	1	Oil Filter Disc For all except PA50-CM)

Part numbers marked with an asterisk (*) are contained in a repair kit see sheet 5 of 5 for individual repair kit information.



Detail "A-1"

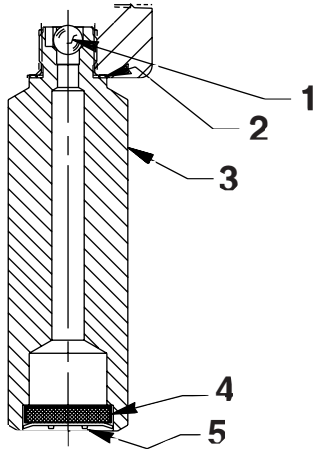


Item No.	Part No.	No. Req'd	Description
1	*206504	1	Foam Tube
2	29365	1	Release Valve Button
3	*10266	1	O-ring (.37 X .25; For all except PA50-2E, PA50-2V, PA50E & PA50V)
	11438	1	O-ring (.37 X .25; For PA50-2V & PA50V)
	17715	1	O-ring (.37 X .25; PA50-2E & PA50E)
4	*13944	1	Compression Spring (.36 O.D. X .50)
5	34377	1	Poppet Retainer
6	*15279	1	O-ring (.50 X .37; For all except PA50-2E, PA50-2V, PA50E & PA50V)
	19775	1	O-ring (.50 X .37; For PA50-2V & PA50V)
	17716	1	O-ring (.50 X .37; For PA50-2E & PA50E)
7	*10375	1	Ball (1/4")
8	25685	1	Ball Retainer
9	*14624	1	Spring (.25 O.D. X .75)

Part numbers marked with an asterisk (*) are contained in a repair kit see sheet 5 of 5 for individual repair kit information.

FILTER ADAPTER ASSEMBLY BEFORE 6/1/98

For 2 Gallon Reservoirs Only

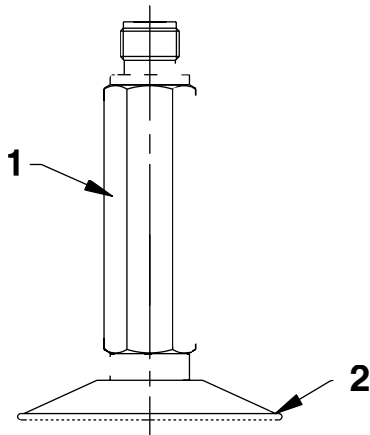


Item No.	Part No.	No. Req'd	Description
1	*10423	1	Ball (9/32 Dia.)
2	*10261	1	Special Washer (3/4 x 19/32 x 1/32)
3	48008	1	Filter Adapter (Torque to 40/50 ft. lbs., oiled; For PA50-2E, PA50-2N & PA50-2V)
4	214578	1	Filter
5	214586	1	Retaining Ring (.63 x .015)

Part numbers marked with an asterisk (*) are contained in a Repair Kit see sheet 5 of 5 for individual repair kit information.

FILTER ADAPTER ASSEMBLY AFTER 6/1/98

For 2 Gallon Reservoirs Only
(Reference Part Number 48008)



Item No.	Part No.	No. Req'd	Description
1	422017	1	Filter Adapter
2	29682	1	Filter

REPAIR KITS

No. 300957

PA50
PA50M
70-130 (PA50M-DE-STA-CO)
PA50N
66516

No. 300961

PA50-2N

No. 300958

PA50-CM

INSTRUCTIONS FOR RETAINER REPLACEMENT

Your pump's retainer is locked into place by one of the two following methods. Determine which method was used on your pump's retainer, then follow the appropriate steps to remove the old and install and stake the new.

Method 1 - Retainer shows no sign of stake marks

1. This retainer has been locked in place with a Loctite product. To replace it, a moderate amount of heat needs to be applied to the cylinder nut (in the area of the retainer) to soften the existing Loctite allowing it to be removed.
2. Install the new retainer into the cylinder nut and torque to 80/100 in. lbs. **Note: Do not use a Loctite product this time but stake the new retainer in place according to instructions in Step 3.**
3. To lock retainer into place, use a center punch positioned in the seam between the retainer and the cylinder nut and stake the new retainer in two places approximately 180° apart.

Method 2 - Retainer has two stake marks in the seam between the retainer and the cylinder nut

1. For replacement of this retainer, the stake marks must be removed. Using a 1/8" or larger diameter drill bit, remove the existing stakes by drilling a short distance into the stake marks. Remove the retainer.
2. Install the new retainer into the cylinder nut and torque to 80/100 in. lbs.
3. To lock retainer into place, use a center punch positioned in the seam between the retainer and the cylinder nut and stake the new retainer in two places approximately 180° apart.

NOTE: Do not stake in the old stake marks.

