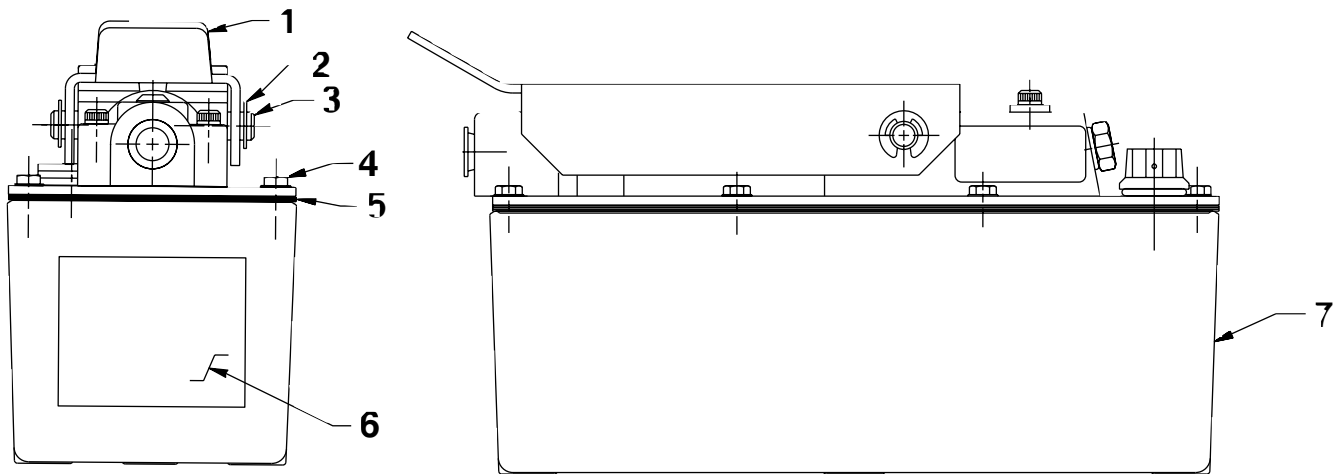


**MODEL G
AIR/HYDRAULIC PUMP**

**Maximum Capacity: 3,200 PSI (For PA50-RL-32)
3,500 PSI (For PA50-RL-35)**



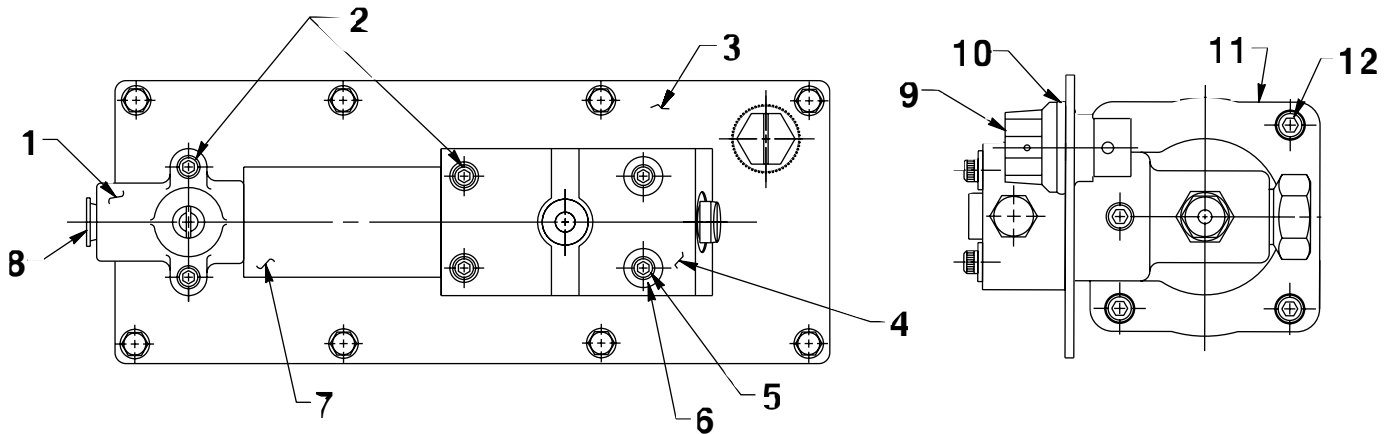
Item No.	Part No.	No. Req'd	Description
1	47696BK2	1	Hand Pedal
2	*11032	2	External Retaining Ring (For 3/8 shaft)
3	215709	1	Pin
4	215952	8	Hex Head Washer Screw (10-24 X 5/8 Lg.; Torque to 25/35 in. lbs., oiled)
5	*47675	1	Reservoir Gasket
6	305494	1	Instruction Decal (Oil lube)
7	62007	1	Reservoir

PARTS INCLUDED BUT NOT SHOWN

215951	2	Hex Head Washer Tapping Screw (1/4-20 X 3/4 Lg.; For pump mounting purposes only.)
--------	---	--

Part numbers marked with an asterisk (*) are contained in Repair Kit No. 300960.

TOP AND END VIEWS



Item No.	Part No.	No. Req'd	Description
1	37199	1	Air Intake Valve Body
2	11151	4	Socket Head Screw (10-24 X 1-1/4" Lg.; Torque to 50/60 in. lbs.)
3	421164BK2	1	Cover Plate
4	59051	1	Release Valve Body
5	11435	2	Socket Head Screw (10-24 X 1-3/4" Lg.; Torque to 50/60 in. lbs.)
6	11089	2	Flat Washer (#10 bolt)
7	*29992	1	Foam Tube
8	14794	1	Plastic Cap
9	251689	1	Filler/Breather Cap
10	*10273	2	O-ring (13/16 X 5/8 X 3/32; included with item No. 9)
11	64767	1	Pump Body
12	17428	4	Socket Head Screw (1/4-20 X 3-1/2" Lg.; Torque to 85/95 in. lbs. oiled; Note: Cross torque in increments of 30 in. lbs.)

Part numbers marked with an asterisk (*) are contained in Repair Kit No. 300960.

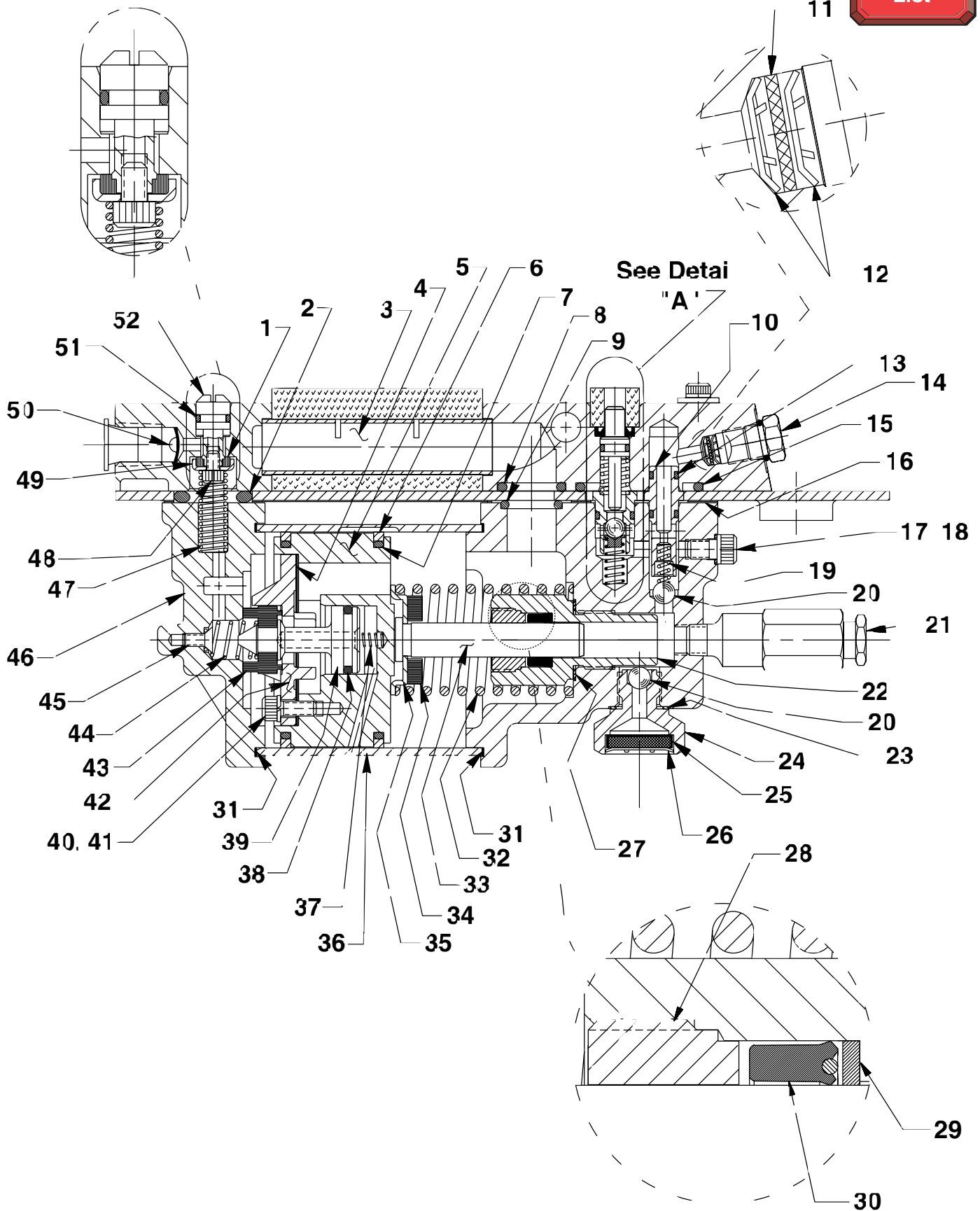
Refer to any operating instructions included with this product for detailed information about operation, testing, disassembly, reassembly, and preventive maintenance.

Items found in this parts list have been carefully tested and selected. **Therefore: Use only genuine Power Team replacement parts!**

Additional questions can be directed to our Technical Services Department.

BASIC ASSEMBLY

To Parts List



Parts List, Form No. 101890, Back sheet 2 of 3

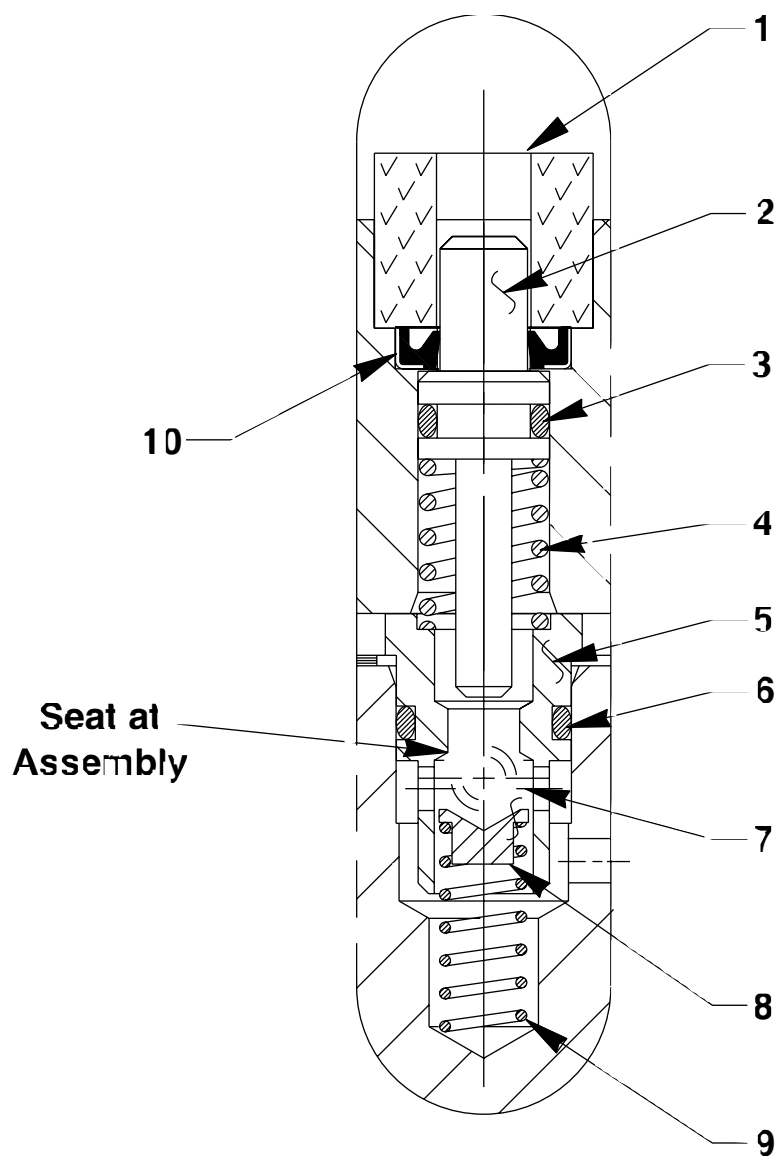
Item No.	Part No.	No. Req'd	Description	Item No.	Part No.	No. Req'd	Description
1	*28182	1	Air Valve Poppet	29	*12488	1	Backup Washer
2	*251717	1	O-ring (1" X 5/8 X 3/16)	30	*253095	1	U-cup
3	*28387	1	Muffler	31	*17429	2	Backup Washer (2-15/16" X 2-3/4" X .045)
4	*28239	1	Gasket	32	*13938	1	Compression Spring (1.452 O.D. X 4-7/16" Lg.)
5	52390	1	Piston Body	33	28400	1	Piston (7/16)
6	*14265	2	Piston Ring	34	202613	1	Bumper
7	*251835	2	O-ring (2-5/16" X 2-1/8" X 3/32)	35	211082	1	Spring Guide
8	*10276	1	O-ring (1" X 3/4 X 1/8)	36	351122	1	Air Cylinder (Note: Locate groove on upper half (top) of pump with chamfered tube end towards rear head as shown.)
9	*10272	1	O-ring (3/4 X 9/16 X 3/32)	37	*12692	1	Compression Spring (3/16 O.D. X 1-11/16" Lg.)
10	34378	1	Check Valve Body	38	*211052	1	O-ring (.900 X .706 X .097)
11	*214596	1	Oil Filter Disc (For PA50-RL-32)	39	305475	1	Exhaust Valve Stem
	*250638	1	Oil Filter Disc (For PA50-RL-35)	40	*10241	3	Lockwasher (For #10 bolt)
12	*12201	2	Internal Retaining Ring (For PA50-RL-32)	41	211054	3	Socket Head Screw (10-24 X 1/2 Lg.; Torque to 50/55 in. lbs.)
	*11088	2	Internal Retaining Ring (For PA50-RL-35)	42	33822	1	Piston End Plate Casting
13	*12522	2	O-ring (3/8 X 1/4 X 1/16; Urethane)	43	*28183	1	Piston Poppet
14	17147	1	Plug Fitting (7/16; For PA50-RL-32)	44	*205679	1	Compression Spring (.485 O.D. X .915 Lg.)
	11127	1	Plug Fitting (For PA50-RL-35)	45	*205674	1	Flat Head Screw (8-32 X 3/8 Lg.; Torque to 12/18 in. lbs.)
15	*11841	1	O-ring (1-5/8" X 1-3/8" X 1/8)	46	51480	1	Rear Head
16	*351021	1	Cover Plate Gasket	47	12691	1	Compression Spring (3/8 O.D. X 1-1/2" Lg.)
17	*10442	1	Copper Washer (3/8 X 1/4 X 1/32)	48	13936	1	Socket Head Screw (8-32 X 1/4 Lg.)
18	10002	1	Socket Head Screw (1/4-20 X 3/8 Lg.; Torque to 90/110 in. lbs.)	49	28198	1	Seal Guide
19	*10445	1	Compression Spring (5/32 O.D. X 3/4 Lg.)	50	*216296	1	Filter Disc
20	*10423	2	Steel Ball (9/32 Dia.)	51	10267	1	O-ring (7/16 X 5/16 X 1/16)
21	21278-32	1	Relief Valve (Set at 3,100/3,300 PSI; for PA50-RL-32 only)	52	33841	1	Actuator Button
	21278-35	1	Relief Valve (Set at 3,500/3,800 PSI; for PA50-RL-35 only)				
22	421642	1	Blank Cylinder (Torque to 90/100 ft. lbs. oiled.)				
23	*10261	1	Copper Washer (3/8 X 19/32 X 1/32)				
24	421539	1	Filter Adapter (Torque to 40/50 ft. lbs. oiled)				
25	214578	1	Filter				
26	214586	1	Internal Retaining Ring				
27	*10263	1	Special Washer				
28	*351662	1	Retainer (Note: For replacement, a moderate amount of heat may have to be applied to the cylinder nut (in the area of the retainer) to soften the existing loctite. Apply Loctite #277, Loctite #680 (provided in repair kit) or equivalent to external threads of new retainer, assemble to cylinder nut & torque to 80/100 in. lbs.)				



Part numbers marked with an asterisk (*) are contained in Repair Kit No. 300960.

Note: Shaded areas reflect last revision(s) made to this form.

DETAIL A



Item No.	Part No.	No. Req'd	Description
1	*206504	1	Foam Tube
2	29365	1	Release Valve Button
3	*10266	1	O-ring (3/8 X 1/4 X 1/16)
4	*251297	1	Compression Spring (3/8 O.D. X 1/2 Lg.)
5	34377	1	Poppet Retainer
6	*15279	1	O-ring (1/2 X 3/8 X 1/16)
7	*10375	1	Steel Ball (1/4 Dia.)
8	25685	1	Ball Retainer
9	*14624	1	Compression Spring (1/4 O.D. X 3/4 Lg.)
10	*15620	1	Oil Shaft Seal

Part numbers marked with an asterisk (*) are contained in Repair Kit No. 300960.