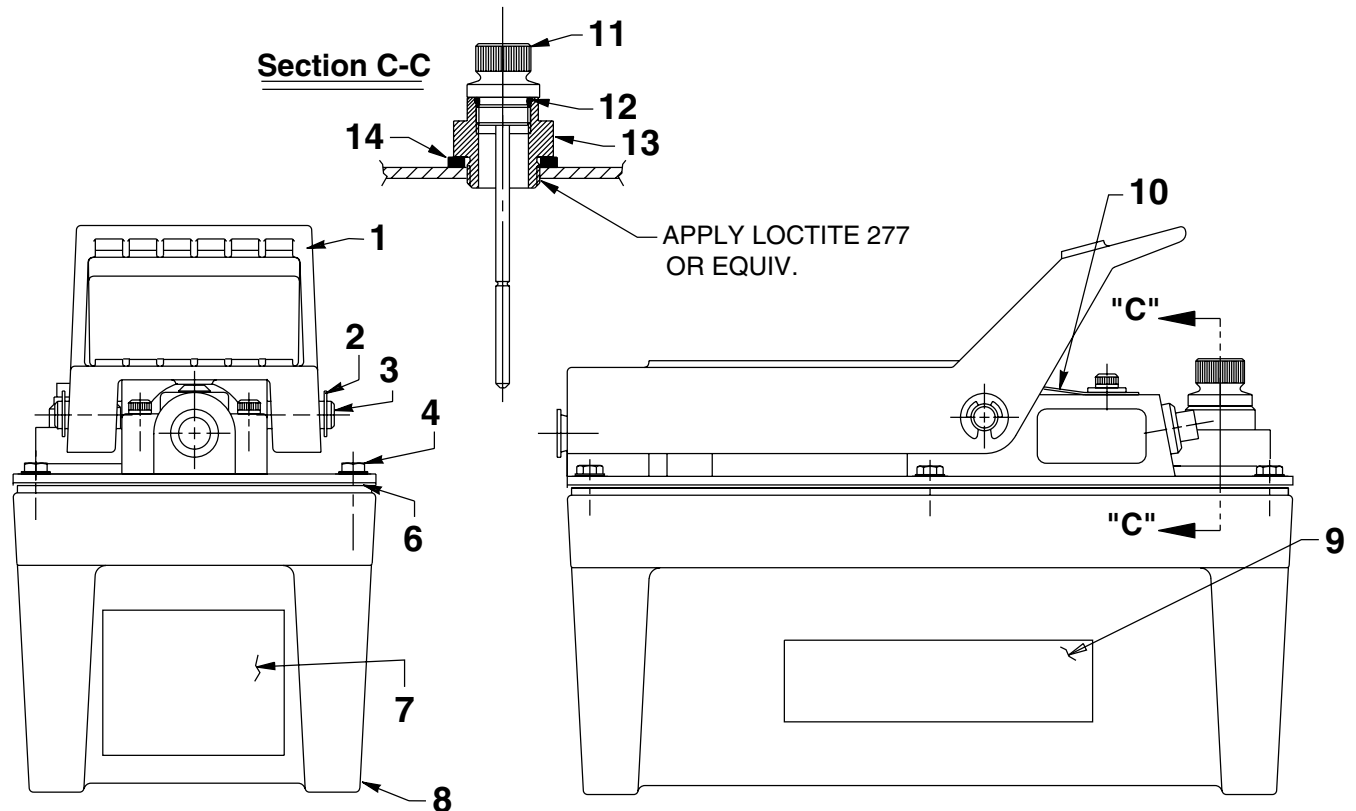


MODEL G
AIR HYDRAULIC PUMP
Rated Capacity: 4,475 PSI at 125 PSI Air Max.



Item No.	Part No.	No. Req'd	Description
1	41322	1	Foot Pedal
2	11032	2	Retaining Ring
3	28386	1	Pin
4	215952	6	Self-tapping Screw (Torque to 25/35 in. lbs.)
6	*33853	1	Reservoir Gasket
7	305494	1	Important Decal
8	41300WH2	1	Reservoir
9	211533	2	Trade Name Decal
10	302466	1	Spring Clip

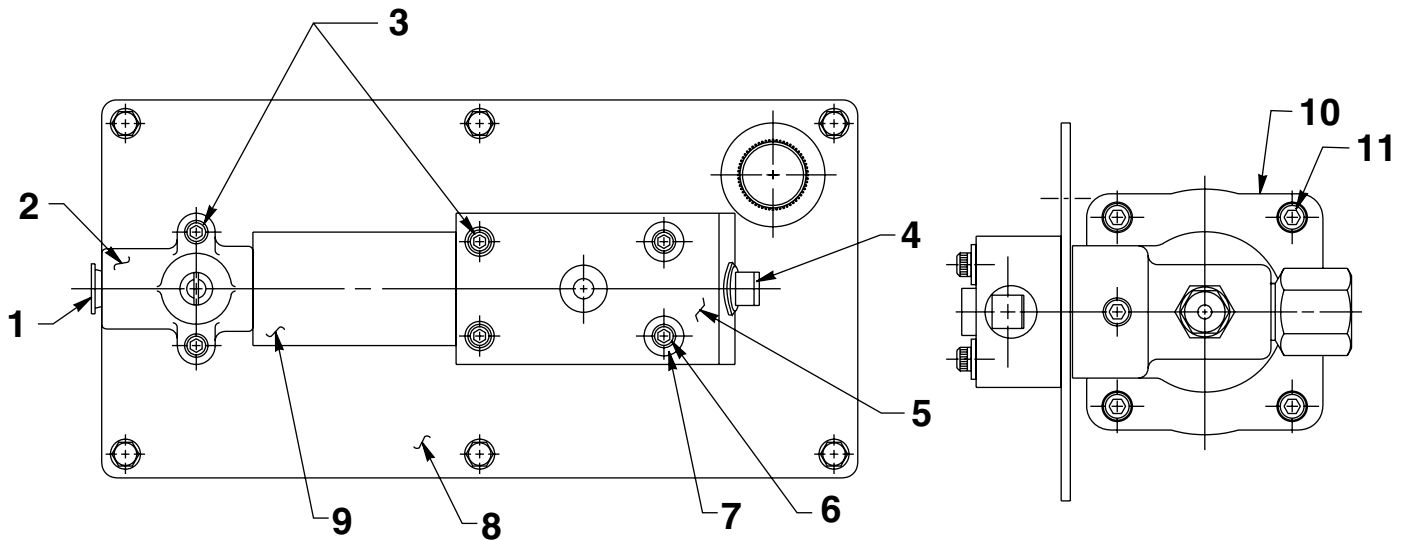
Item No.	Part No.	No. Req'd	Description
11	252076	1	Dipstick Assembly
12	*10273	1	O-ring (13/16 X 5/8 X 3/32)
13	351214	1	Filler Plug Adapter
14	252041	1	Sealing Washer

PARTS INCLUDED BUT NOT SHOWN

10676	1	Straight Fitting
251778	1	Quick Coupler
303666	1	Hydraulic Hose

Part numbers marked with an asterisk (*) are contained in Repair Kit No. 300970.

SIDE & END VIEWS



Item No.	Part No.	No. Req'd	Description
1	14794	1	Plastic Plug
2	37199	1	Air Intake Valve Body
3	11151	4	Soc. Hd. Cap Screw (#10-24 X 1-1/4" Lg.; Torque to 50/60 in. lbs.)
4	11127	1	Pressure Plug
5	58563	1	Release Valve Body
6	11435	2	Soc. Hd. Cap Screw (#10-24 X 1-1/2" Lg.; Torque to 50/60 in. lbs.)
7	11089	2	Washer (#10 bolt)
8	421236BK2	1	Cover Plate
9	*29992	1	Foam Tube
10	64767	1	Pump Body
11	17428	4	Soc. Hd. Cap Screw (1/4-20 X 4" Lg.; Torque to 85/95 in. lbs oiled. NOTE: Cross torque in increments of 30 in. lbs.)

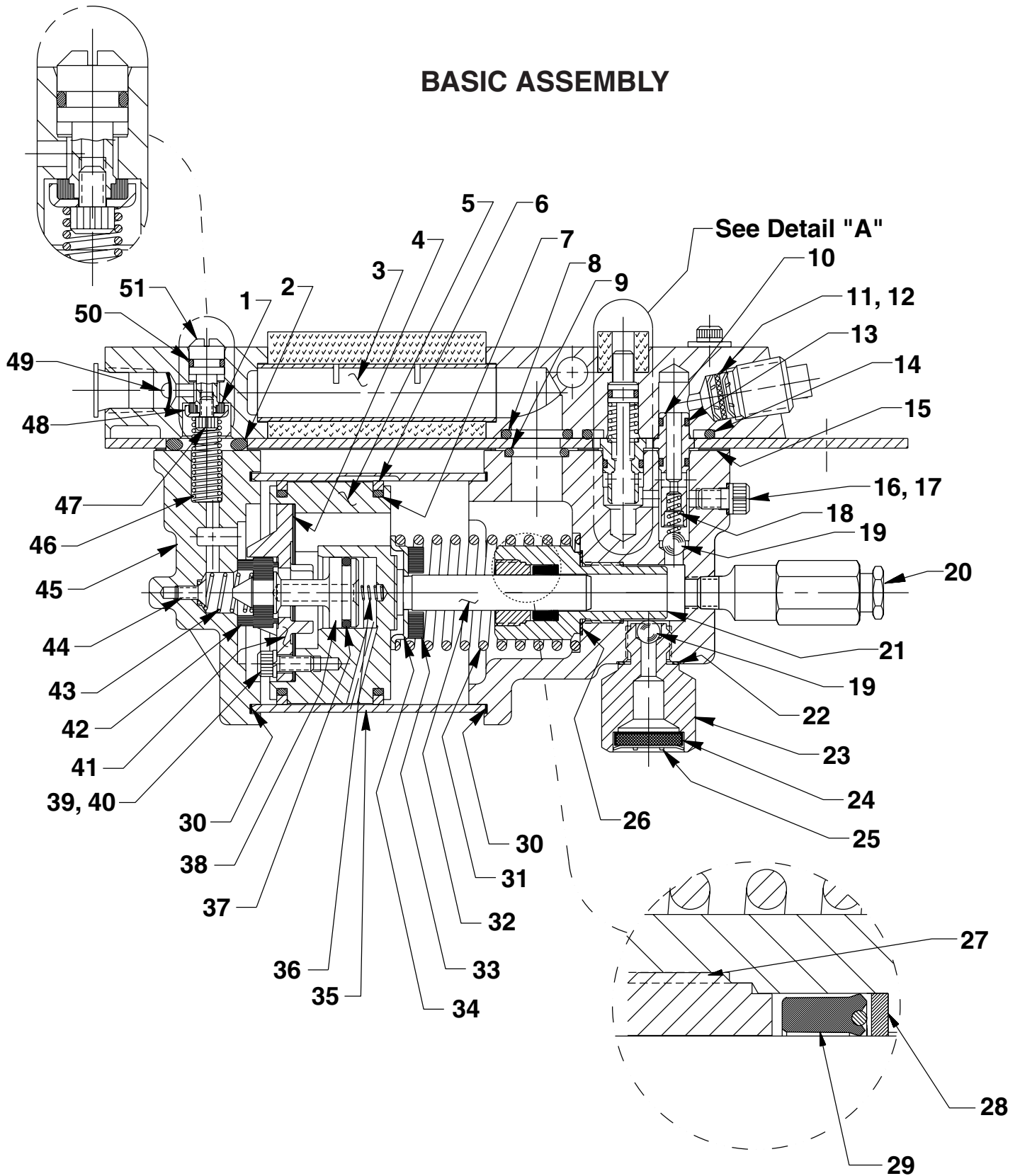
Part numbers marked with an asterisk (*) are contained in Repair Kit No. 300970.

Refer to any operating instructions included with this product for detailed information about operation, testing, disassembly, reassembly, and preventive maintenance.

Items found in this parts list have been carefully tested and selected. **Therefore: Use only genuine Hytec replacement parts!**

Additional questions can be directed to our Technical Services Department.

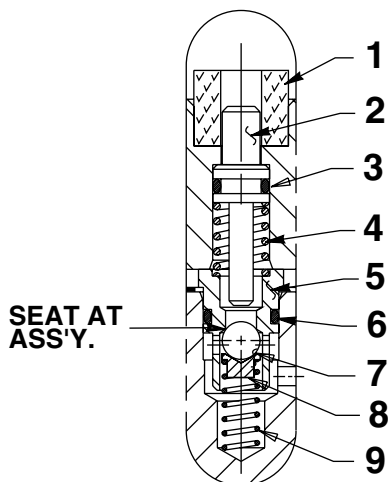
BASIC ASSEMBLY



Parts List, Form No. 101897, Back sheet 2 of 3

Item No.	Part No.	No. Req'd	Description	Item No.	Part No.	No. Req'd	Description
1	28182	1	Piston Poppet	30	*17429	2	Backup Ring (2-15/16" X 2-3/4" X .045)
2	*251717	1	O-ring (1" X 5/8 X 3/16)	31	*13938	1	Compression Spring (1.452 O.D. X 4-7/16" Lg.)
3	28387	1	Muffler	32	28400	1	Piston
4	*28239	1	Gasket	33	202613	1	Rubber Bumper
5	52390	1	Piston Body	34	211082	1	Spring Guide
6	*14265	2	Piston Seal	35	37434	1	Air Cylinder (Locate groove on upper half (top) of pump with chamfered tube end towards rear head as shown.)
7	*251835	2	O-ring (2-1/2" X 2-5/16" X 3/32)	36	*12692	1	Compression Spring (3/16 O.D. X 1-11/16" Lg.)
8	*10276	1	O-ring (1" X 3/4 X 1/8)	37	*211052	1	O-ring (.900 X .706 X .097)
9	*10272	1	O-ring (3/4 X 9/16 X 3/32)	38	305475	1	Exhaust Valve stem
10	34378	1	Check Valve Body	39	*10241	3	Lockwasher (For #10 Bolt)
11	*250638	1	Oil Filter Disc	40	211054	3	Soc. Hd. Cap Screw (#10-24 X 1/2 Lg.; Torque to 50/55 in. lbs.)
12	*11088	2	Retaining Ring	41	33822	1	End Piston Plate
13	*12522	2	O-ring (3/8 X 1/4 X 1/16; Urethane)	42	*28183	1	Piston Poppet
14	*11841	1	O-ring (1-5/8" X 1-3/8" X 1/8)	43	*205679	1	Compression Spring (.485 O.D. X .915 Lg.)
15	351021	1	Gasket	44	*205674	1	Flat Hd. Screw (#8-32 X 3/8 Lg.; Torque to 12/18 in. lbs.)
16	*10442	1	Copper Washer (3/8 X 1/4 X 1/32)	45	51480	1	Rear Head
17	10002	1	Soc. Hd. Cap Screw (1/4-20 UNC X 3/8 Lg.; Torque to 90/110 in. lbs.)	46	12691	1	Compression Spring (3/8 O.D. X 1-1/2" Lg.)
18	*10445	1	Compression Spring (5/32 O.D. X 3/4 Lg.)	47	13936	1	Soc. Hd. Cap Screw (8-32 UNC X 1/4 Lg.)
19	*10423	2	Steel Ball (9/32 dia.)	48	28198	1	Guide Seal
20	21278-48	1	Relief Valve (Set at 4,900/5,300 PSI. Apply loctite 592 [Power Team #905516] or equiv. & torque to 150/170 in. lbs.)	49	*216296	1	Filter Disc
21	421642	1	Piston Cylinder (Torque to 90/100 ft. lbs. oiled)	50	*10267	1	O-ring (7/16 X 5/16 X 1/16)
22	*10261	1	Copper Washer (3/4 X 19/32 X 1/32)	51	33841	1	Actuator Button
23	48010	1	Filter Adapter (Torque to 40/50 ft. lbs. oiled)				
24	214578	1	Filter				
25	214586	2	Internal Retaining Ring				
26	*10263	1	Copper Washer (1" X .765 X 1/32)				
27	*351662	1	Retainer (Note: See "INSTRUCTIONS FOR RETAINER REPLACEMENT" on sheet 3 of 3.)				
28	*12488	1	Backup Washer				
29	*253095	1	U-cup				

Part numbers marked with an asterisk (*) are contained in Repair Kit No. 300970.



DETAIL "A"

Item No.	Part No.	No. Req'd	Description
1	*206504	1	Foam Tube
2	29365	1	Release Valve Button
3	*10266	1	O-ring (3/8 X 1/4 X 1/16)
4	*13944	1	Spring (3/8 O.D. X 1/2 Lg.)
5	34377	1	Poppet Retainer
6	*13943	1	O-ring (1/2 X 3/8 X 1/16)
7	*10375	1	Steel Ball (1/4 Dia.)
8	25685	1	Ball Retainer
9	14624	1	Compression Spring (1/4 O.D. X 3/4 Lg.)

Part numbers marked with an asterisk (*) are contained in Repair Kit No. 300970.

Note: Shaded areas reflect last revision(s) made to this form.

INSTRUCTIONS FOR RETAINER REPLACEMENT

Your pump's retainer is locked into place by one of the two following methods. Determine which method was used on your pump's retainer, then follow the appropriate steps to remove the old and install and stake the new.

Method 1 - Retainer shows no sign of stake marks

1. This retainer has been locked in place with a Loctite product. To replace it, a moderate amount of heat needs to be applied to the cylinder nut (in the area of the retainer) to soften the existing Loctite allowing it to be removed.
2. Install the new retainer into the cylinder nut and torque to 80/100 in. lbs. **Note: Do not use a Loctite product this time but stake the new retainer in place according to instructions in Step 3.**
3. To lock retainer into place, use a center punch positioned in the seam between the retainer and the cylinder nut and stake the new retainer in two places approximately 180° apart.

Method 2 - Retainer has two stake marks in the seam between the retainer and the cylinder nut

1. For replacement of this retainer, the stake marks must be removed. Using a 1/8" or larger diameter drill bit, remove the existing stakes by drilling a short distance into the stake marks. Remove the retainer.
2. Install the new retainer into the cylinder nut and torque to 80/100 in. lbs.
3. To lock retainer into place, use a center punch positioned in the seam between the retainer and the cylinder nut and stake the new retainer in two places approximately 180° apart.

NOTE: Do not stake in the old stake marks.

