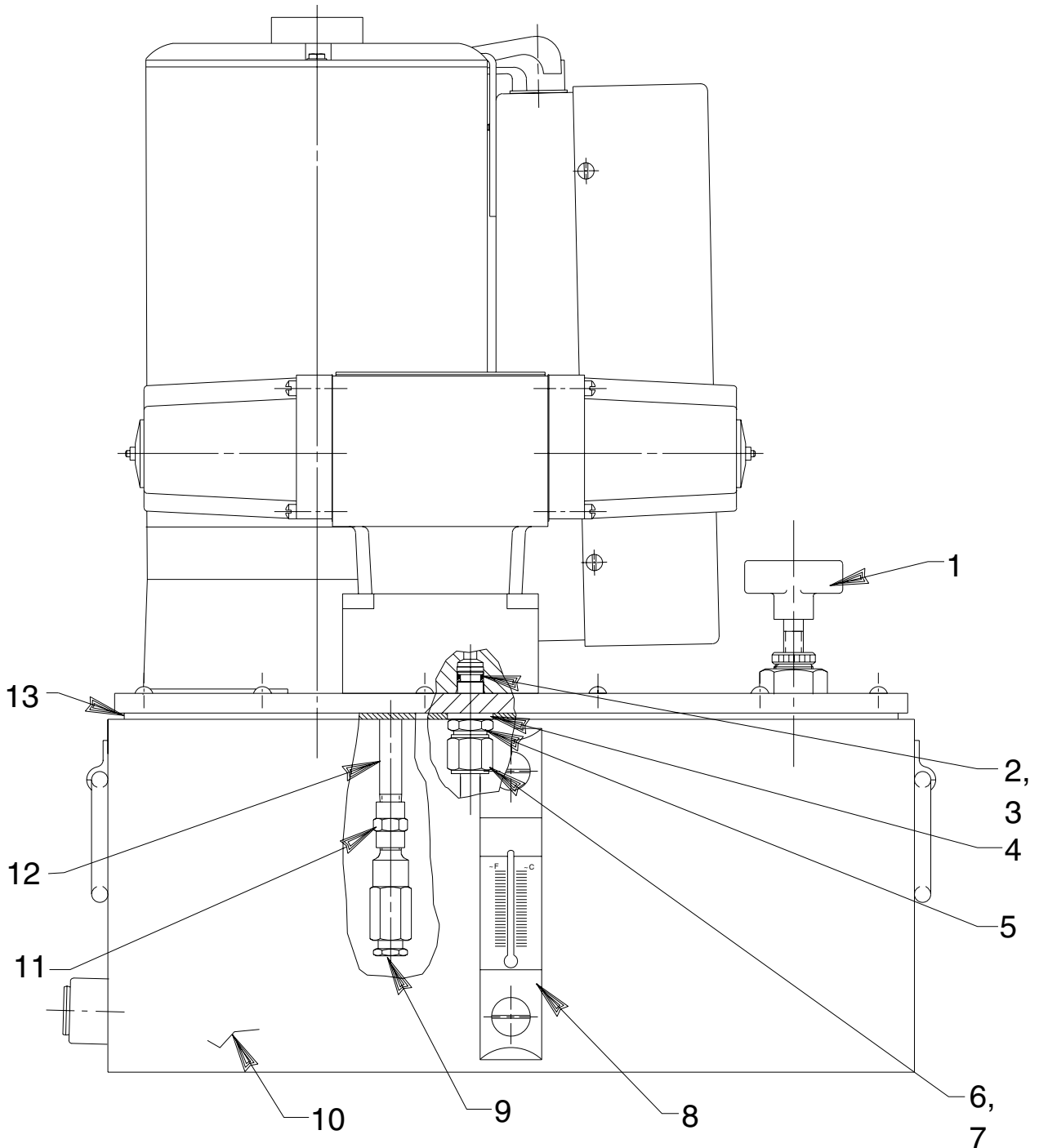


Parts List for:

X2E3
X2E4

Internet Address:
<http://www.powerteam.com>

**MODEL B
DUAL ELECTRIC HYDRAULIC PUMP
PUMP SIDE VIEW**



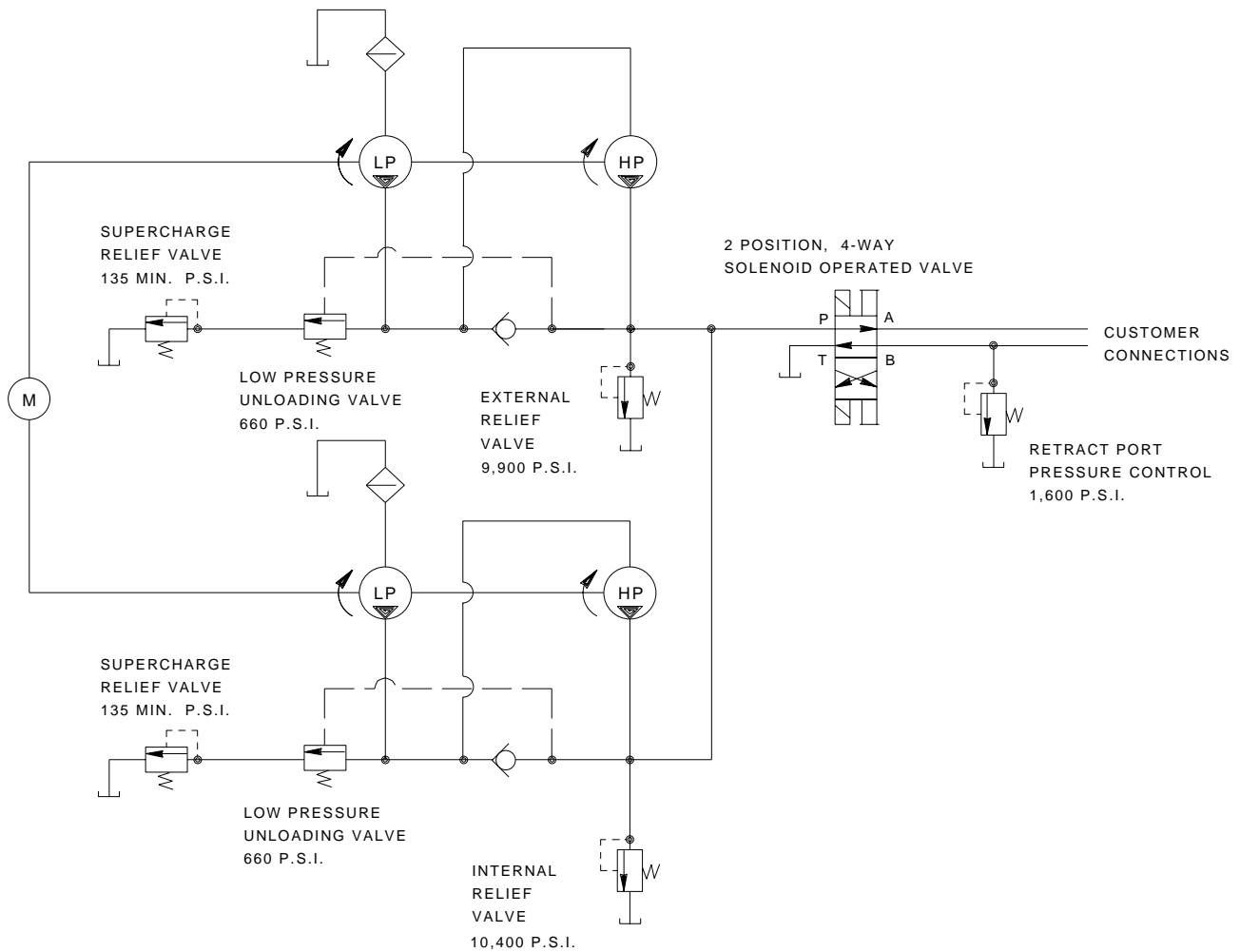
Sheet No. 1 of 6

Rev. 2 Date: 10 May 1999

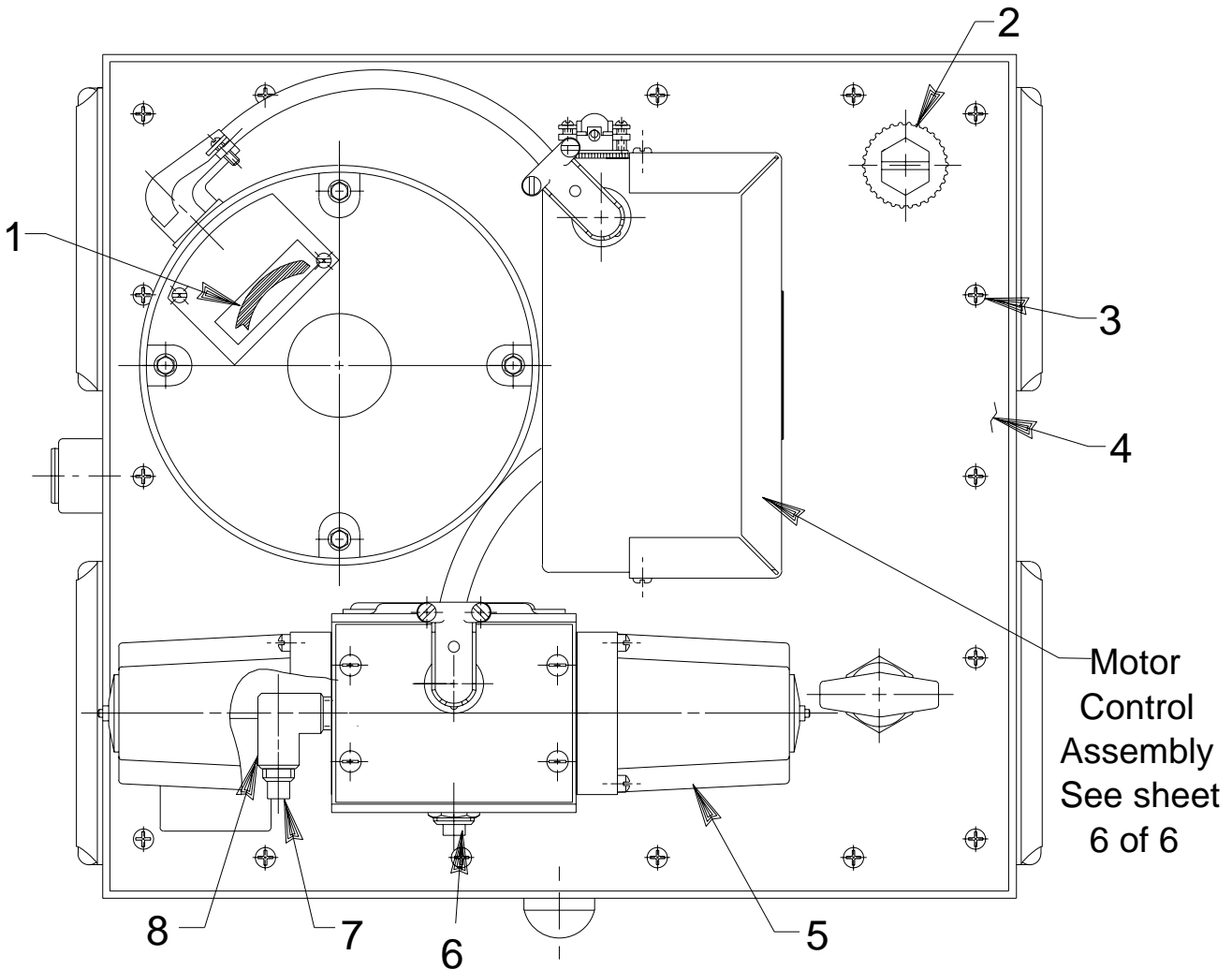
Item No.	Part No.	No. Req'd	Description
1	421280	1	Pressure Regulator (See Form No. 101697)
2	10268	1	O-ring (1/2 X 3/8 X 1/16)
3	11863	1	Teflon Backup Washer (1/2 X 3/8 X 1/16)
4	21484	1	Spacer
5	20787	1	Valve Connector
6	10430	1	Tube Sleeve
7	10431	1	Tube Nut
8	350431	1	Sight Gauge
9	21278-15	1	Relief Valve Assembly (Set at 1500/1700 PSI)
10	64594BL2	1	Reservoir
11	18841	1	Pipe Connector
12	15456	1	Straight Fitting
13	50712	1	Gasket



HYDRAULIC SCHEMATIC



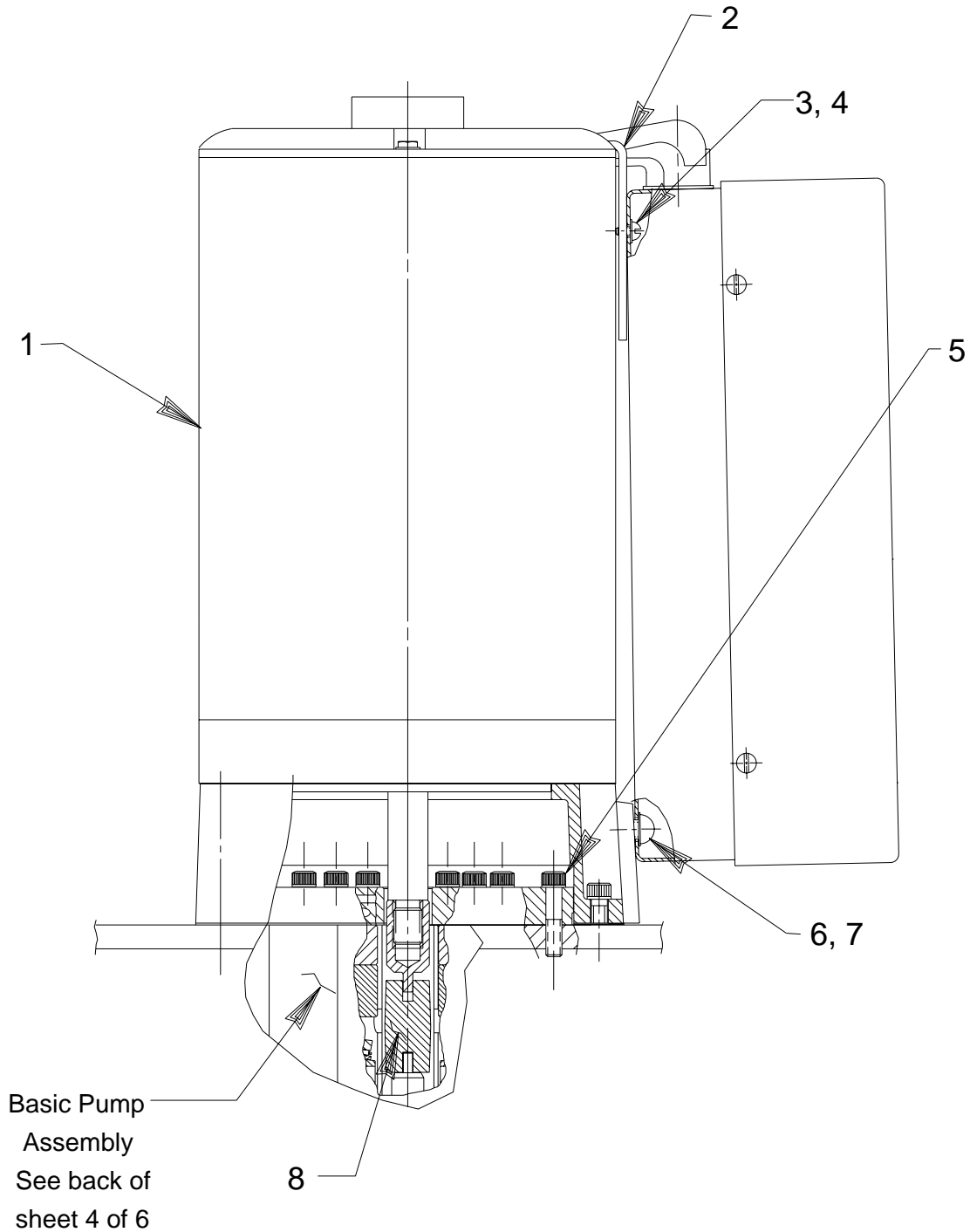
PUMP TOP VIEW



Item No.	Part No.	No. Req'd	Description
1	27556	1	Decal (Motor Rotation)
2	213706	1	Plug
3	13026	18	Machine Screw (10-24 UNC X 3/4 Lg.)
4	64169BK2	1	Cover Plate
5	61408	1	Solenoid Valve (See Form No. 100540)
6	11127	1	Pressure Plug (3/8 NPTF)
7	10970	1	Pipe Plug (1/4 NPTF)
8	10617	1	Elbow

} For X2E3 only

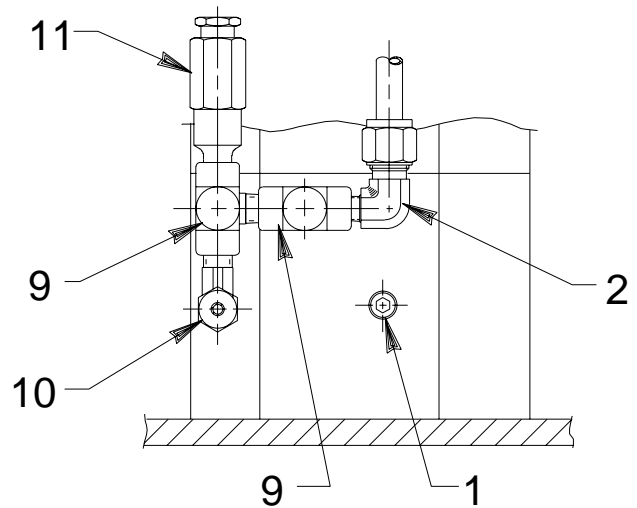
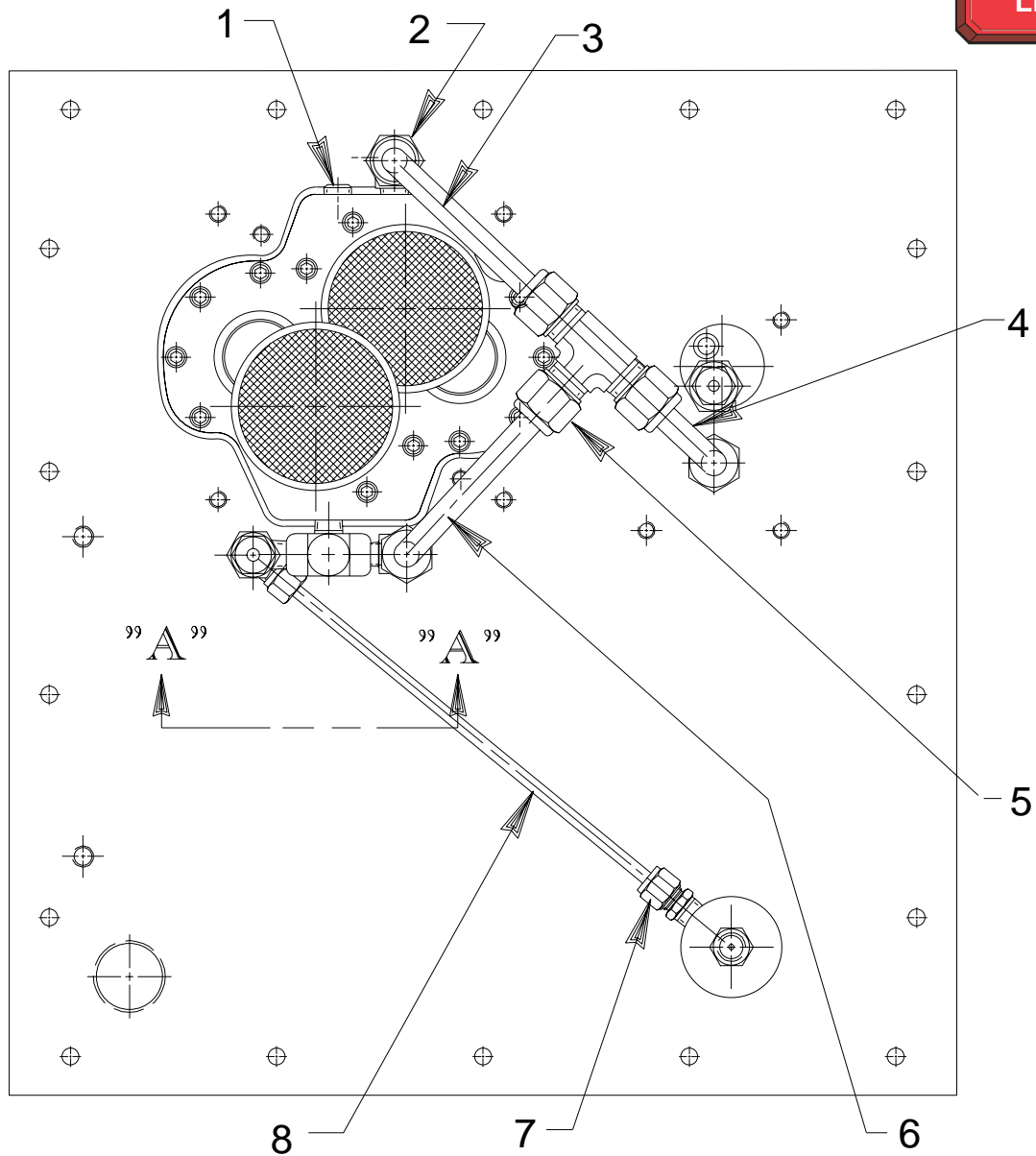
PUMP MOTOR SIDE VIEW



Item No.	Part No.	No. Req'd	Description
1	41318	1	Motor Assembly (For X2E4; 380 V., 50 Hz.; See sheet 4 of 6)
	41318-50	1	Motor Assembly (For X2E3; 460 V., 60 Hz.; See sheet 4 of 6)
2	210442	1	Mounting Bracket
3	11388	1	Lockwasher (#8 External Tooth)
4	10447	1	Machine Screw (#8-32 UNC X 5/16 Lg.)
5	10016	2	Cap Screw (1/4-20 UNC X 1" Lg.; Torque to 80/100 in. lbs.)
6	11351	2	Washer (1/4 External Tooth)
7	253371	2	Machine Screw (1/4-20 UNC X 3/4 Lg.)
8	21091	1	Coupling

PUMP BOTTOM VIEW & SECTION A-A

To Parts List



VIEW A-A

Item No.	Part No.	No. Req'd	Description
1	10427	2	Pressure Plug (1/8 NPTF)
2	10475	2	Tube Elbow
3	350275	1	Oil Line
4	350274	1	Oil Line
5	10659	1	Tee
6	305273	1	Oil Line
7	11173	1	Connector
8	350918	1	Oil Line Assembly
9	14538	2	Tee
10	11278	1	Tube Elbow
11	21278	1	Relief Valve Assembly (Set at 10,100/10,700 PSI)

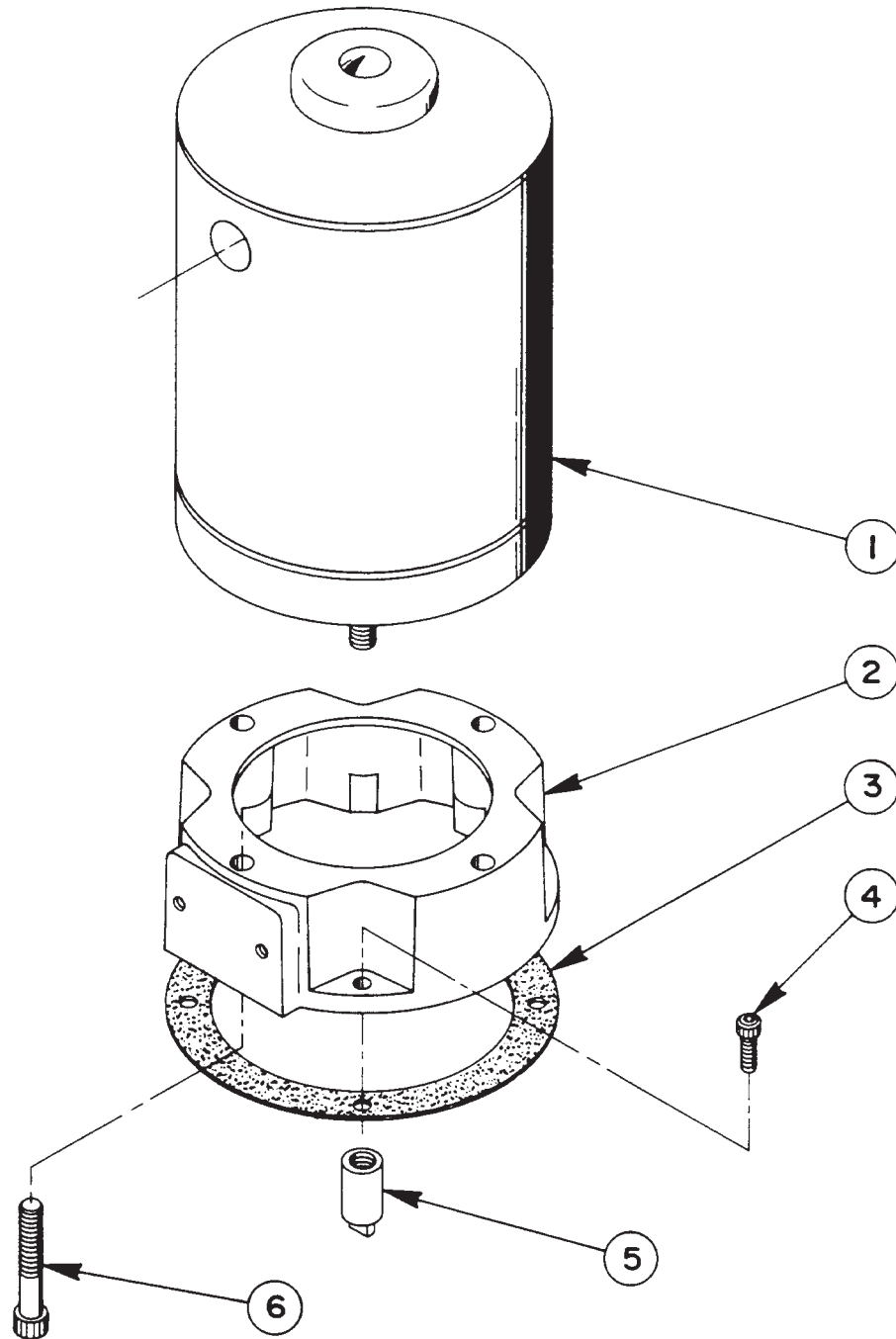


Refer to any operating instructions included with this product for detailed information about operation, testing, disassembly, reassembly, and preventive maintenance.

Items found in this parts list have been carefully tested and selected. **Therefore: Use only genuine Power Team replacement parts!**

Additional questions can be directed to our Technical Services Department.

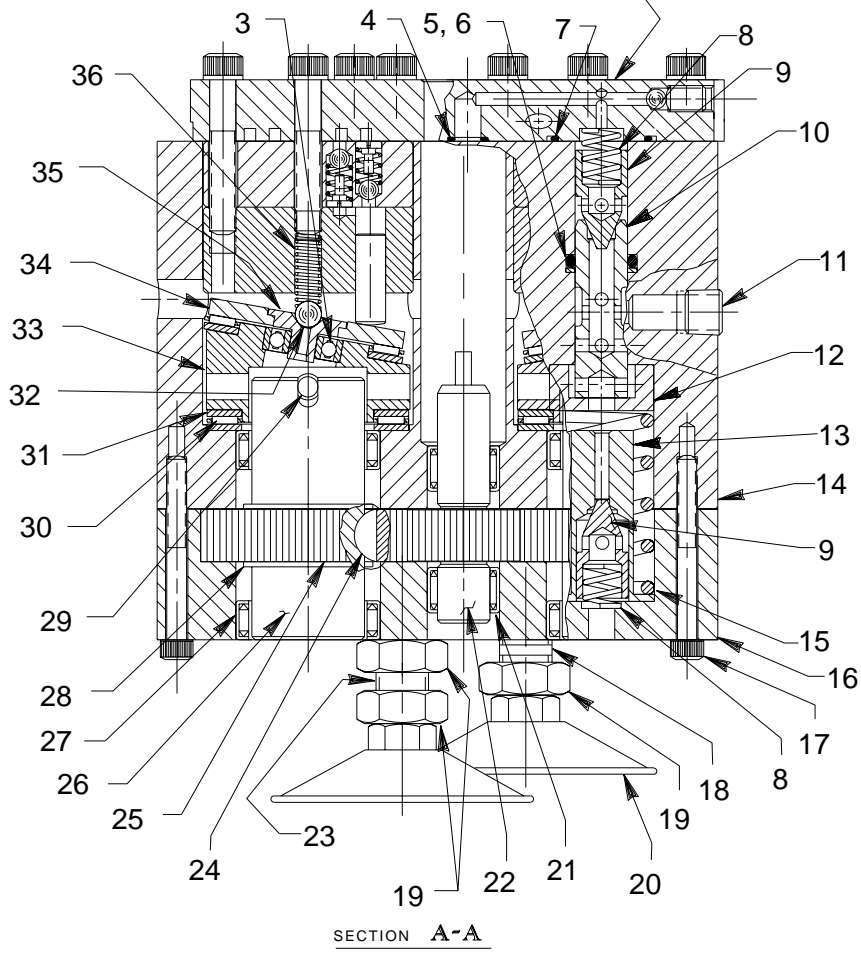
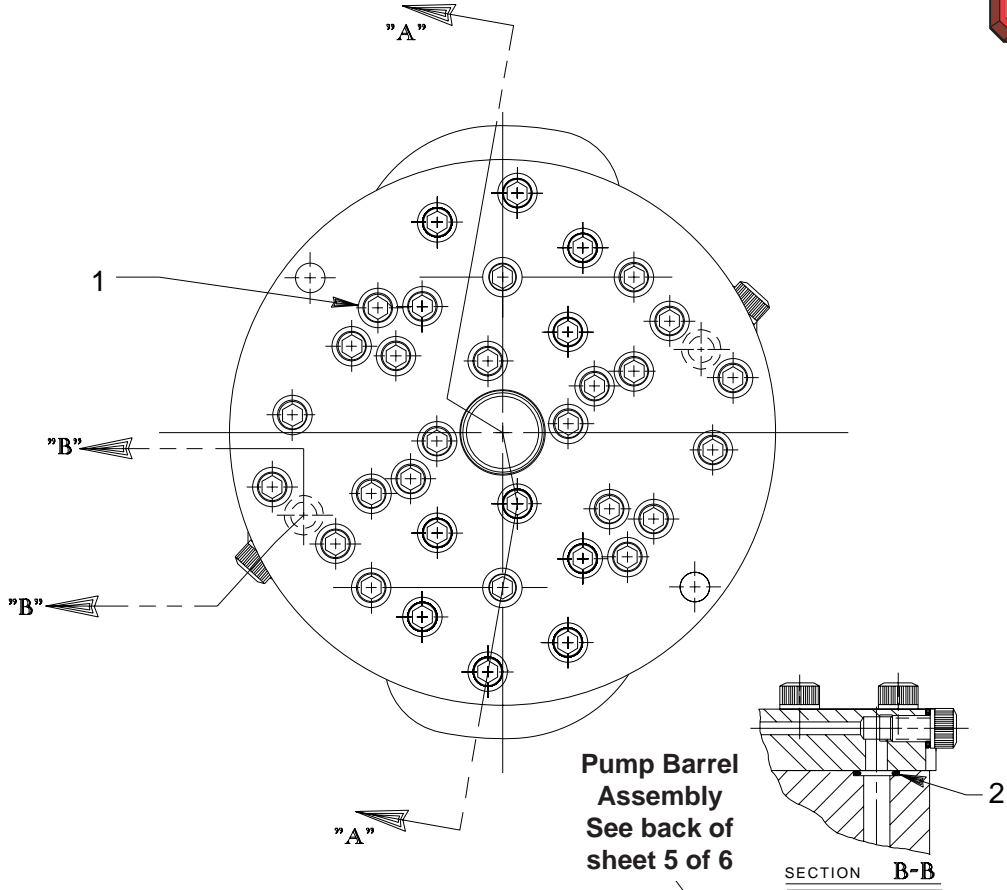
ELECTRIC MOTOR ASSEMBLY



Item No.	Part No.	No. Req'd	Description
1	58571	1	Electric Motor
2	40118GY5	1	Motor Base
3	30650	1	Gasket
4	10008	4	Cap Screw (1/4-20 UNC X 3/4 Lg.)
5	21274	1	Adapter
6	12866	4	Cap Screw (3/8-16 UNC X 2-1/4 Lg.)

Note: Shaded areas reflect last revision(s) made to this form.

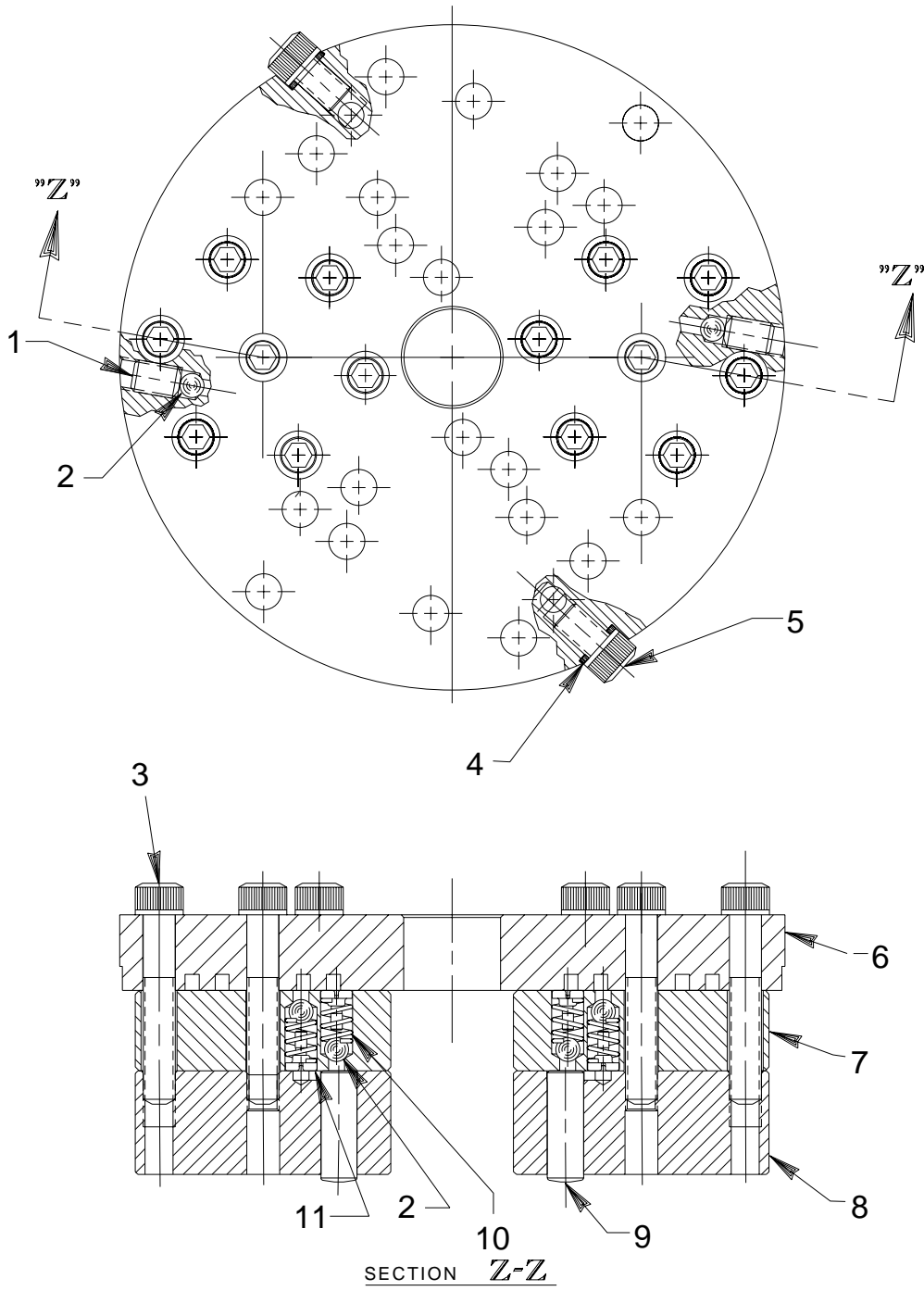
BASIC PUMP ASSEMBLY



Item No.	Part No.	No. Req'd	Description
1	10020	20	Cap Screw (1/4-20 UNC X 1-1/4 Lg.; Torque to 170/180 in. lbs.)
2	10267	2	O-ring (7/16 X 5/16 X 1/16)
3	11814	2	Ball Bearing
4	10266	2	O-ring (3/8 X 1/4 X 1/16)
5	10271	2	O-ring (11/16 X 1/2 X 3/32)
6	12389	2	Backup Washer (11/16 x 1/2 X 1/16)
7	10303	2	O-ring (7/8 X 3/4 X 1/16)
8	10425	4	Compression Spring (3/8 O.D. X 3/4 Lg.)
9	20771	4	Poppet
10	20849	2	Spool
11	10427	2	Pressure Plug
12	23255	2	Spring Guide
13	23256	2	Spring Guide
14	64060	1	Body
15	10426	2	Compression Spring (1" O.D. X 1-13/16 Lg.)
16	64586	1	Body
17	10001	18	Cap Screw (#10-32 UNF X 1-3/4 Lg.; Torque to 50/60 in. lbs.)
18	250219	1	Intake Tube (Apply Permatex [3H] to threads before installing into body [Item#16].)
19	10390	3	Nut
20	29682	2	Strainer
21	11199	2	Needle Bearing
22	21272	1	Drive Gear
23	250218	1	Intake Tube (Apply Permatex [3H] to threads before installing into body [Item#16].)
24	11821	2	Woodruff Key
25	23557	2	Driver Gear
26	23556	2	Shaft
27	11064	4	Needle Bearing
28	11261	4	Retaining Ring
29	11955	2	Pin
30	11228	4	Thrust Bearing
31	11813	6	Bearing Race
32	10375	2	Steel Ball (1/4 dia.)
33	23549	2	Angle Plate
34	23548	2	Top Plate
35	23547	2	Bearing Top Plate
36	10361	2	Compression Spring (1/4 O.D. X 1" Lg.)



HIGH PRESSURE PUMP ASSEMBLY



Item No.	Part No.	No. Req'd	Description
1	10519	2	Set Screw (1/4-20 UNC X 3/8 Lg.; Torque to 65/70 in. lbs.)
2	12223	14	Ball (3/16 Dia.)
3	10023	14	Cap Screw (1/4-28 UNF X 1-1/2 Lg.; Torque to 170-180 in. lbs.)
4	10442	2	Washer (3/8 X 1/4 X 1/32)
5	10002	2	Cap Screw (1/4-20 UNC X 3/8 Lg.; Torque to 140-160 in. lbs.)
6	64061	1	Top Plate
7	40630	2	Valve Head
8	41062	2	Barrel
9	21628	6	Piston
10	10445	12	Compression Spring (5/32 O.D. X 3/4 Lg.)
11	24549	12	Ball Guide

MOTOR CONTROL ASSEMBLY

