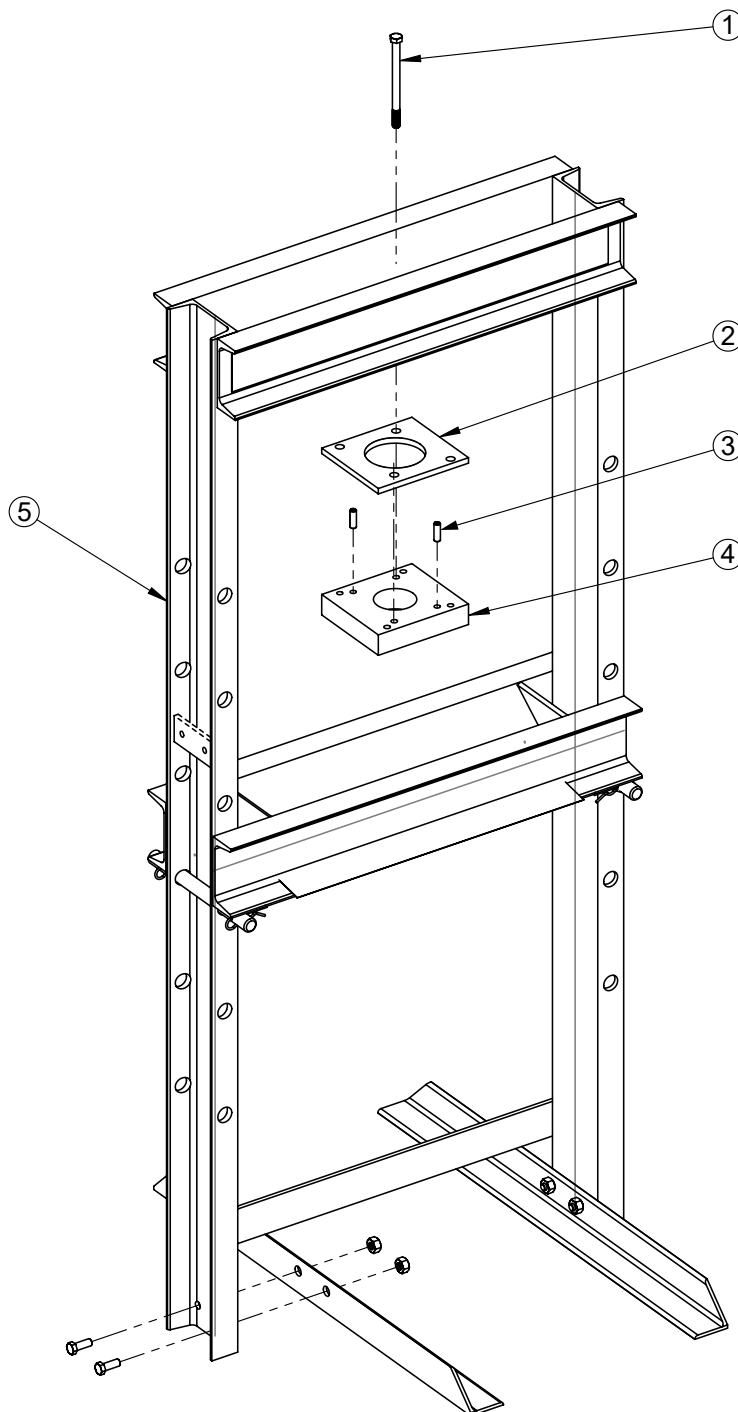


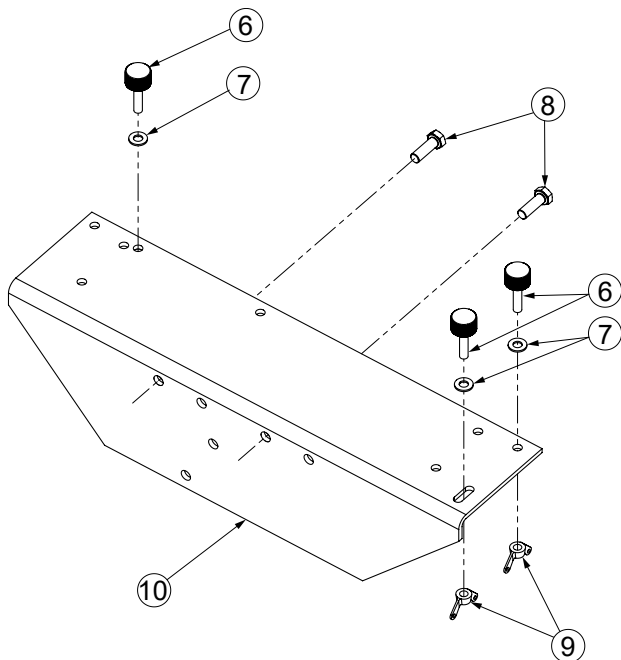
SHOP PRESS

Max. Capacity: 10 Tons (9.07 t)

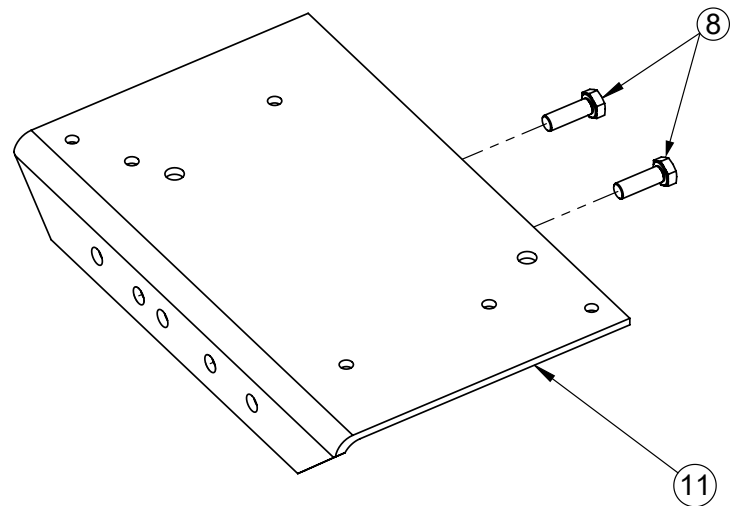


PARTS LIST

ITEM	PART NO.	DESCRIPTION	QTY.
1	11265	SCREW, HEX CAP 3/8-16 X 5.00	2
2	44363	PLATE	1
3	10496	PIN, SPRING SLOTTED .31 X 1.00	2
4	44362	PLATE, CYL MNT 5 1/2 x 5 x 1 (For SP1010A, SPE1010, SPE1010-220, & SPH1010)	1
	44365	PLATE, CYL MNT 5 1/2 x 5 x 1 (For SPE1010D & SPE1010D-220)	1
5	222480	FRAME, 10 TON SHOP PRESS (See Form No. 102768)	1
6	12680	SCREW, THUMB 5/16-18 X 1.25 (For SPH1010 & SPE1010-220)	3
7	10257	WASHER, PLAIN 0.35 x 0.67 x 0.07 ZINC	3
8	10046	HEX Hd. CAP SCREW (3/8-16 UNC x 3/4 Lg.)	2
9	12029	NUT, WING 5/16-18 (For SPH1010, SP1010A, & SPE1010-220)	3
10	42733WH2	HAND PUMP MTG. BRACKET (For SPH1010 & SP1010A)	1
11	421125	ELECTRIC PUMP MOUNTING BRACKET (For SPE1010, SPE1010D, SPE1010-220 & SPE1010D-220)	1
PARTS INCLUDED BUT NOT SHOWN			
	9798	HALF COUPLER, HYD, 3/8" NPTF M (For SPE1010D-220)	2
	RD1010	DOUBLE-ACTING CYLINDER (For SPE1010D & SPE1010D-220; See Form No. 100306)	1
	44135	SINGLE-ACTING CYLINDER (For SPE1010, SPE1010-220, SP1010A and SPH1010; See Form No. 101604)	1
	10469	STRAIGHT FITTING (used on single-acting cylinder end of hose)	1
		STRAIGHT FITTING (used on double-acting cylinder end of hose)	2



HAND & AIR PUMP MOUNTING



ELECTRIC PUMP MOUNTING

Parts List Continued

Refer to any operating instructions included with this product for detailed information about operation, testing, disassembly, reassembly, and preventive maintenance.

Items found in this parts list have been carefully tested and selected. **Therefore: Use only genuine Power Team replacement parts!**

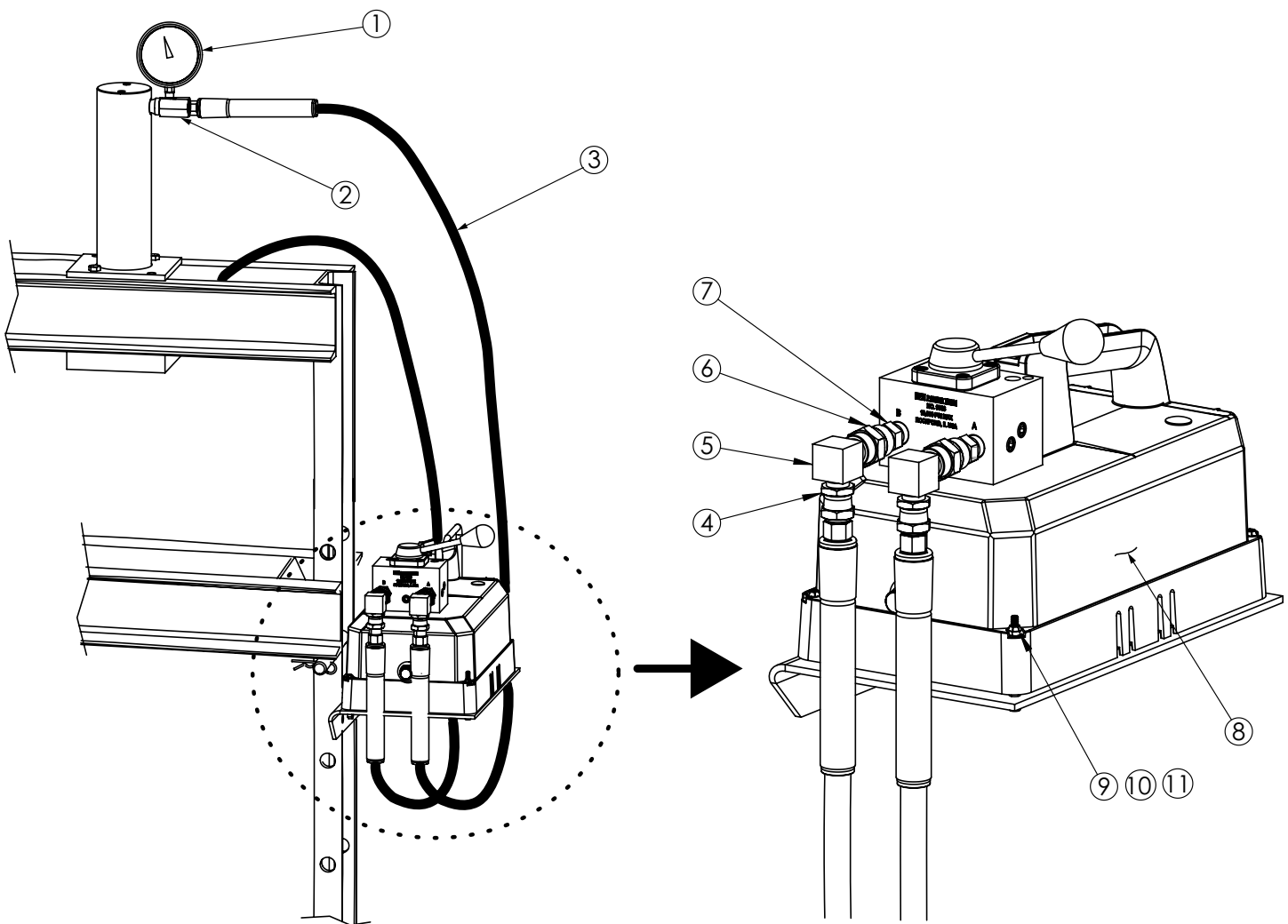
Additional questions can be directed to our Technical Services Department.

HYDRAULIC PUMP HOOK-UP

NOTE: Seal all hydraulic connections with a high grade hydraulic thread sealant.

PE10 ELECTRIC PUMP (DOUBLE-ACTING)

(used on SPE1010D and SPE1010D-220)

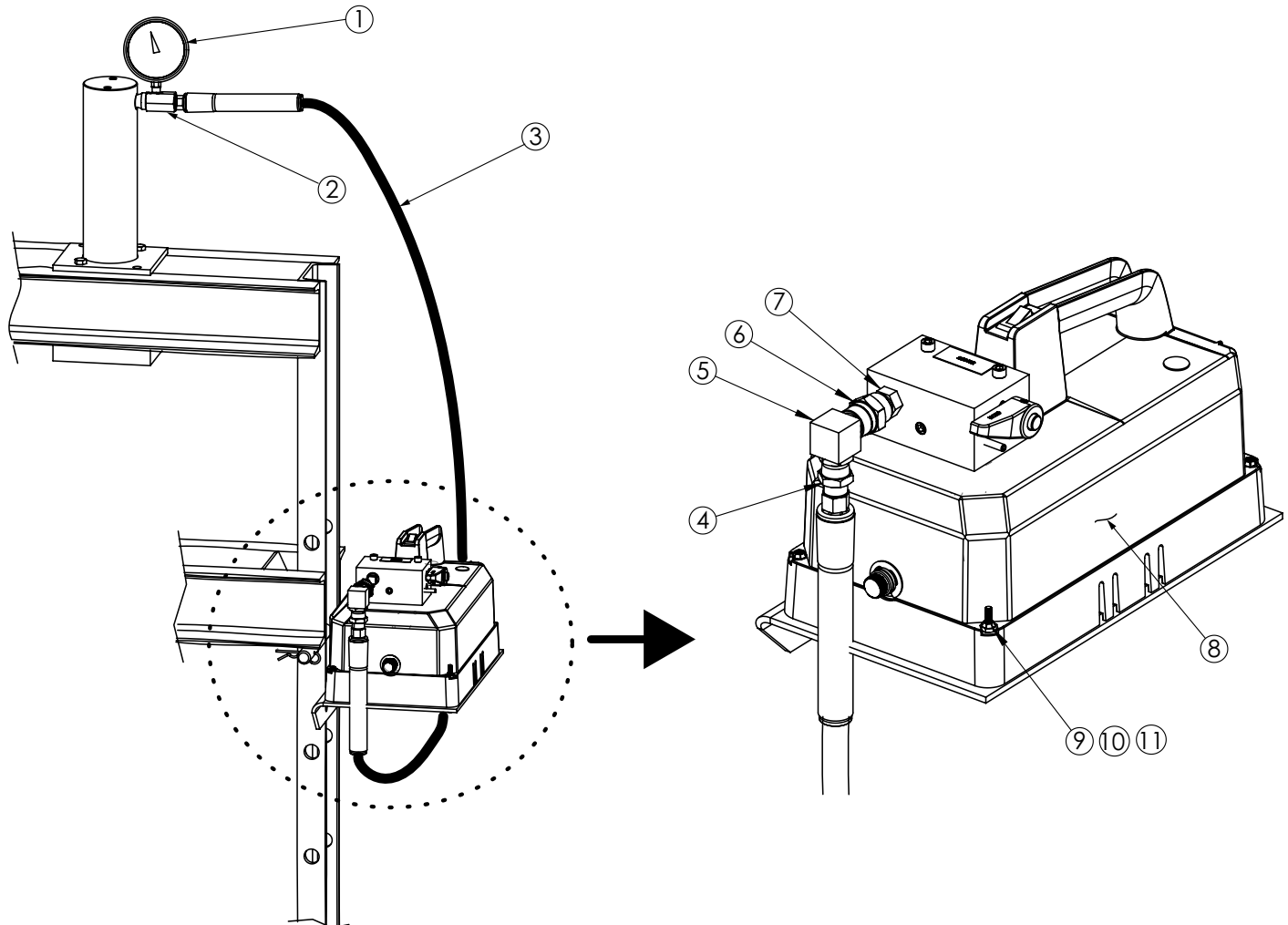


Parts List Continued

ITEM	PART NO.	DESCRIPTION	QTY.
1	9055	GAUGE, 4", 0-10TON C/RD/RH+ DRY	1
2	9670	TEE ADPT, 1/4", 3/8" NPTF F, 3/8" NPTF M	1
3	350157	HOSE, RUBBER .38" INTERNAL DIA, 6'	2
4	10469	FITTING, STR 3/8 NPTF M x 3/8 NPSM F	2
5	9681	STREET ELBOW, 3/8" NPTF	2
6	9680	FITTING, STR 3/8 NPTF F x 3/8 NPTF F	2
7	9682	FITTING, STR 3/8 NPTF M x 3/8 NPTF M	2
8	PE104	PUMP,E 2-SPD, 110/115V, 50/60HZ, S/D (For SPE1010D; See Form No. 101703)	1
	PE104-220	PUMP,E 2-SPD, 220/230V, 50/60HZ, S/D (For SPE1010D-220; See Form No. 101703)	1
9	251786	SCREW, SHC 10-24 X 2.50 (Replace two of the four mtg. screws provided with PE10 pump)	2
10	207405	LOCKNUT, HEX. (FLEXIBLE LOCKING)	2
11	11089	WASHER, PLAIN 0.22 x 0.51 x 0.05 STEEL	2

PE10 ELECTRIC PUMP (SINGLE-ACTING)

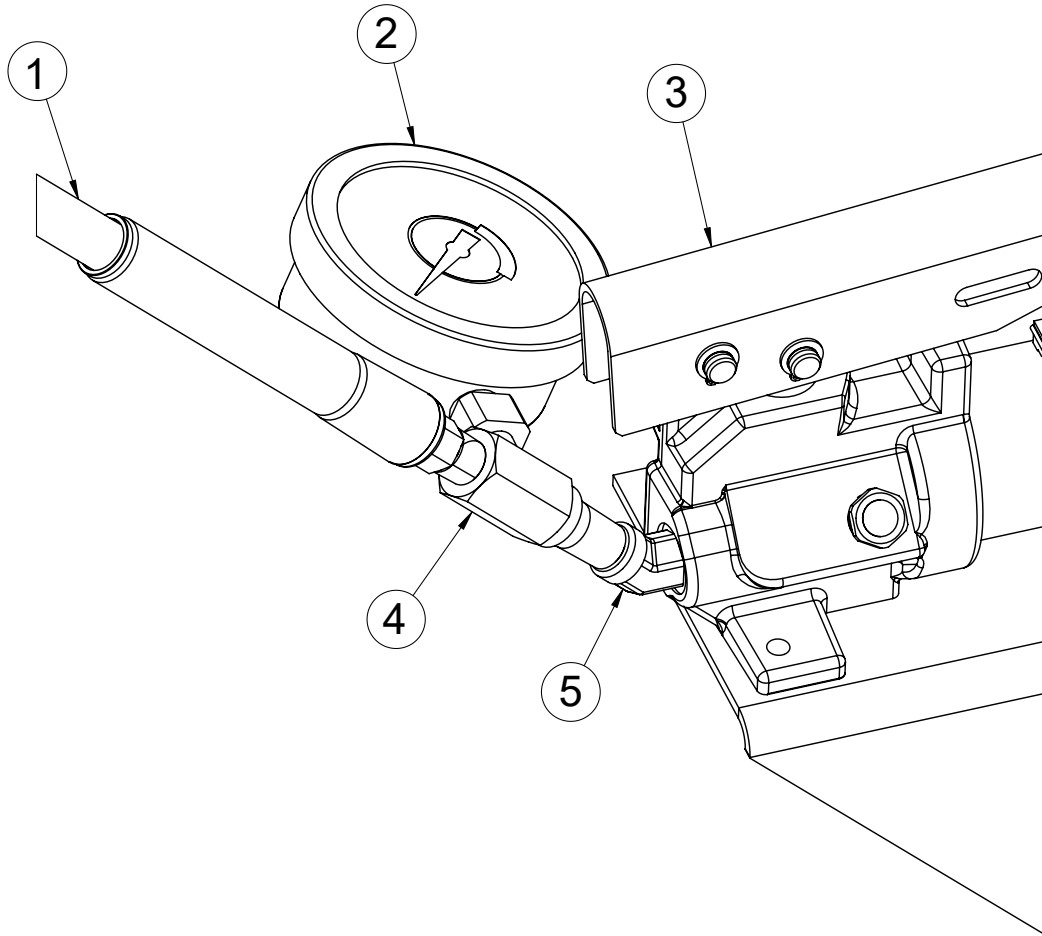
(used on SPE1010 & SPE1010-220)



ITEM	PART NO.	DESCRIPTION	QTY.
1	9055	GAUGE, 4", 0-10TON C/RD/RH+ DRY	1
2	9670	TEE ADPT, 1/4", 3/8" NPTF F, 3/8" NPTF M	1
3	350157	HOSE, RUBBER .38" INTERNAL DIA, 6'	1
4	10469	FITTING, STR 3/8 NPTF M x 3/8 NPSM F	1
5	9681	STREET ELBOW, 3/8" NPTF	1
6	9680	FITTING, STR 3/8 NPTF F x 3/8 NPTF F	1
7	9682	FITTING, STR 3/8 NPTF M x 3/8 NPTF M	1
8	PE102	PUMP,E 2-SPD, 110/115V, 50/60HZ, S/D (For SPE1010; See Form No. 101703)	1
	PE102-220	PUMP,E 2-SPD, 220/230V, 50/60HZ, S/D (For SPE1010-220; See Form No. 101703)	1
9	251786	SCREW, SHC 10-24 X 2.50 (Replace two of the four mtg. screws provided with PE10 pump)	2
10	207405	LOCKNUT, HEX. (FLEXIBLE LOCKING)	2
11	11089	WASHER, PLAIN 0.22 x 0.51 x 0.05 STEEL	2

P55 HAND PUMP

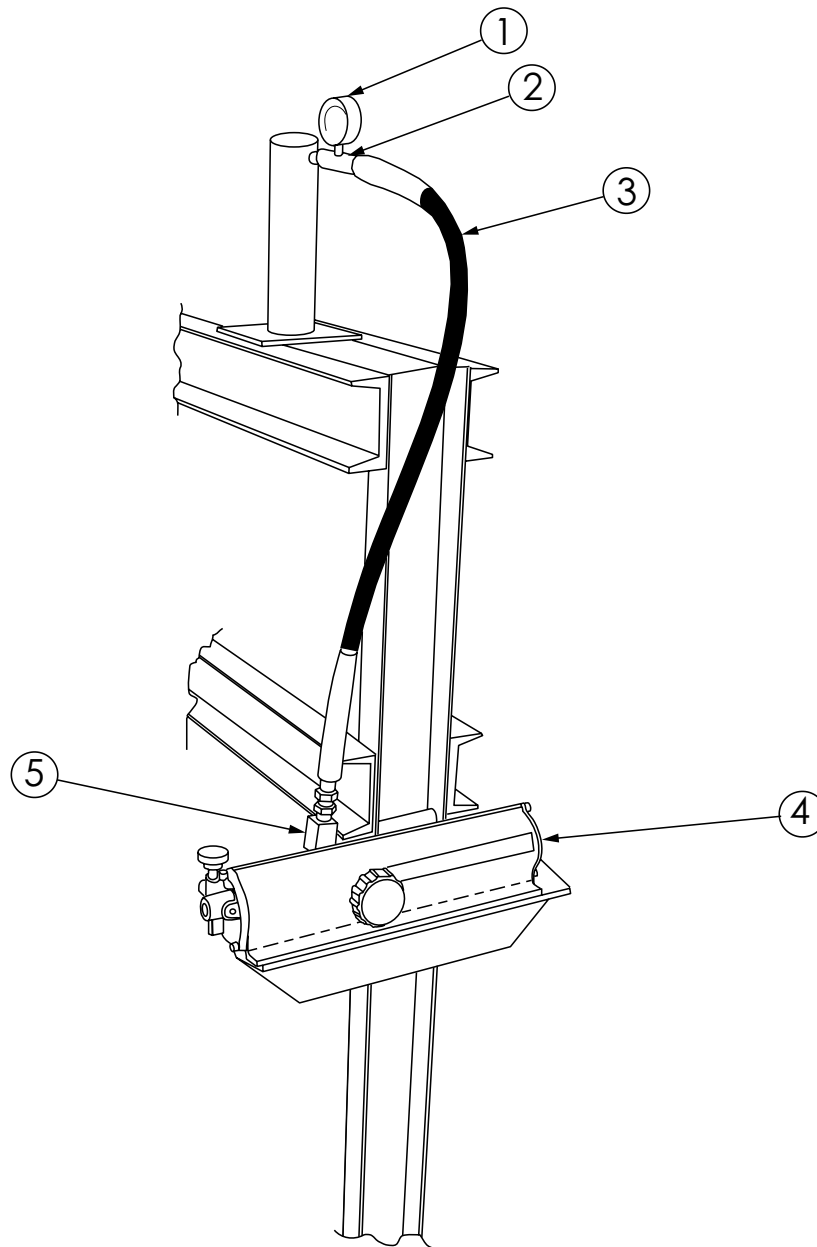
(used on SPH1010)



ITEM	PART NO.	DESCRIPTION	QTY.
1	350157	HOSE, RUBBER .38" INTERNAL DIA, 6'	1
2	9055	GAUGE, 4", 0-10TON C/RD/RH+ DRY	1
3	P55	HAND PUMP, 1-SPD, .160 CU IN/STROKE (See Form No.101804)	1
4	9670	TEE ADPT, 1/4", 3/8" NPTF F, 3/8" NPTF M	1
5	10648	FITTING, 45D ELB 3/8 NPTF M x 3/8 NPSM F	1

PA9H AIR PUMP

(used on SP1010A)



ITEM	PART NO.	DESCRIPTION	QTY.
1	9055	GAUGE, 4", 0-10TON C/RD/RH+ DRY	1
2	9670	TEE ADPT, 1/4", 3/8" NPTF F, 3/8" NPTF M	1
3	350157	HOSE, RUBBER .38" INTERNAL DIA, 6'	1
4	PA9H	PUMP, AIR/HYDRAULIC (See Form No.101786)	1
5	10648	FITTING, 45D ELB 3/8 NPTF M x 3/8 NPSM F	1