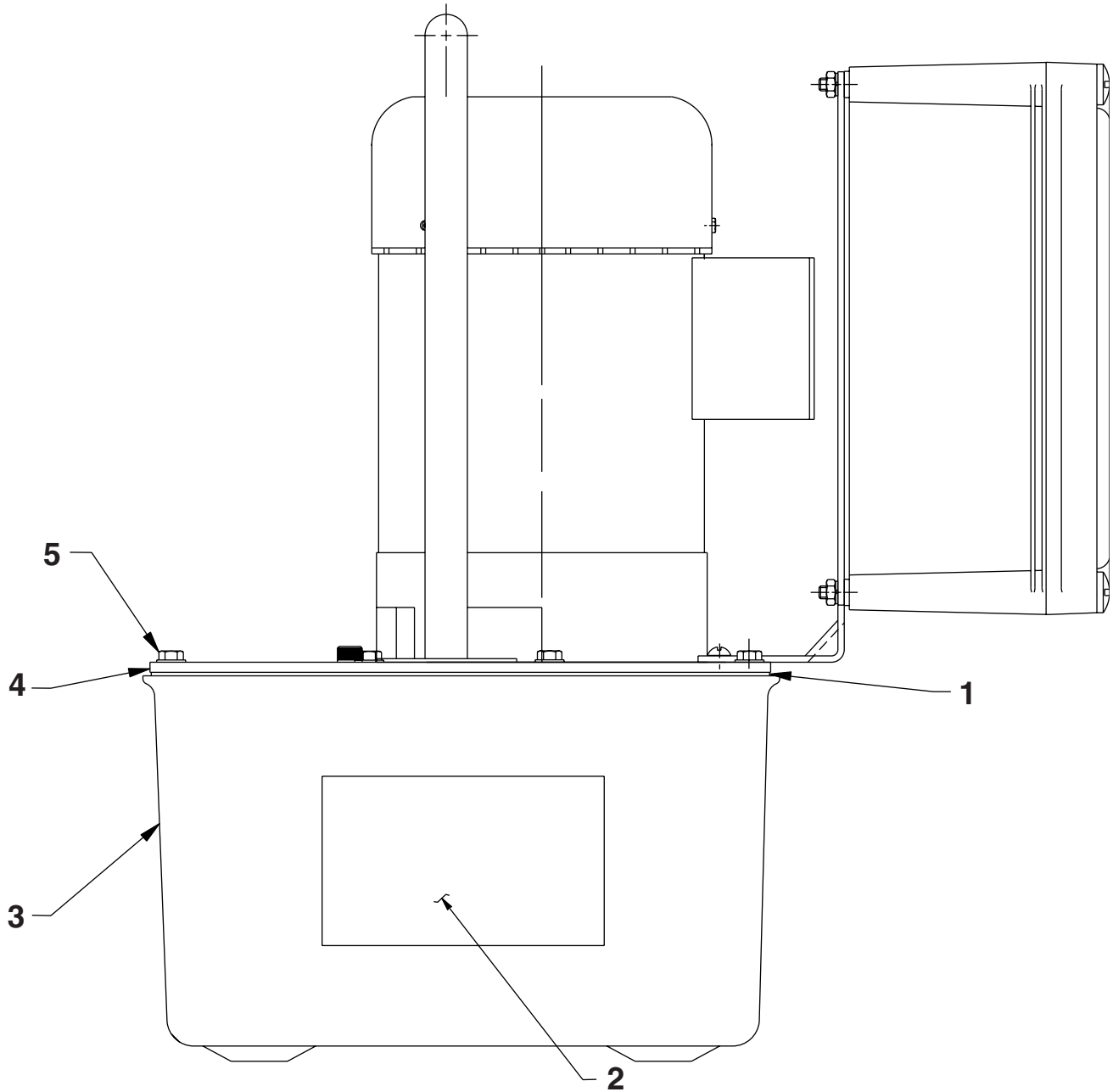
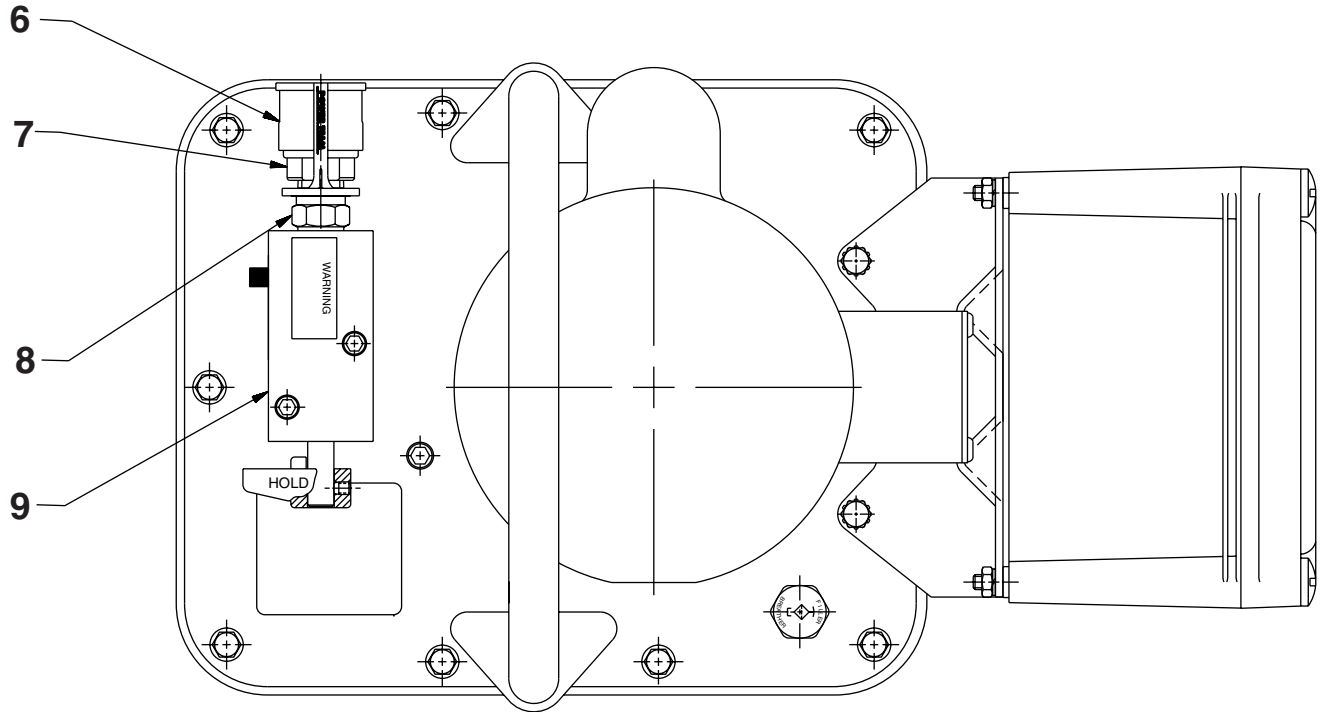


ELECTRIC HYDRAULIC PUMP





Item No.	Part No.	No. Req'd	Description
1	40164	1	Gasket, Reservoir
2	14113	2	Decal, Tradename (Caterpillar)
3	61165	1	Reservoir
4	65952	1	Pump, Elec. (220V, 50HZ)
5	209799	14	Screw, Hx Wshr HD (1/4-10 x 7/8; Torque to 50/60 in. lbs.)
6	9800	1	Cap, Dust
7	25599	1	Coupler, Hose Half
8	9682	1	Connector, Male (3/8" NPTF)
9	52170	1	Vale, 2-Way

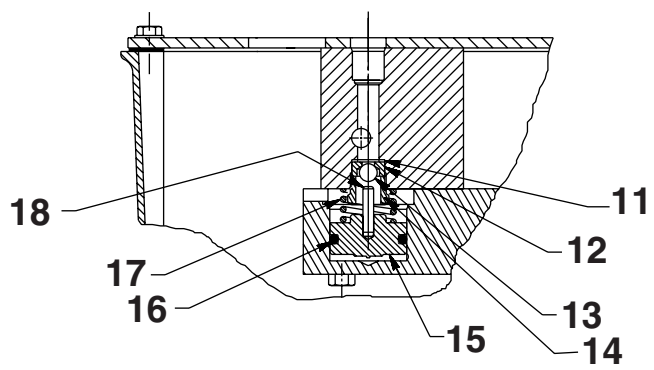
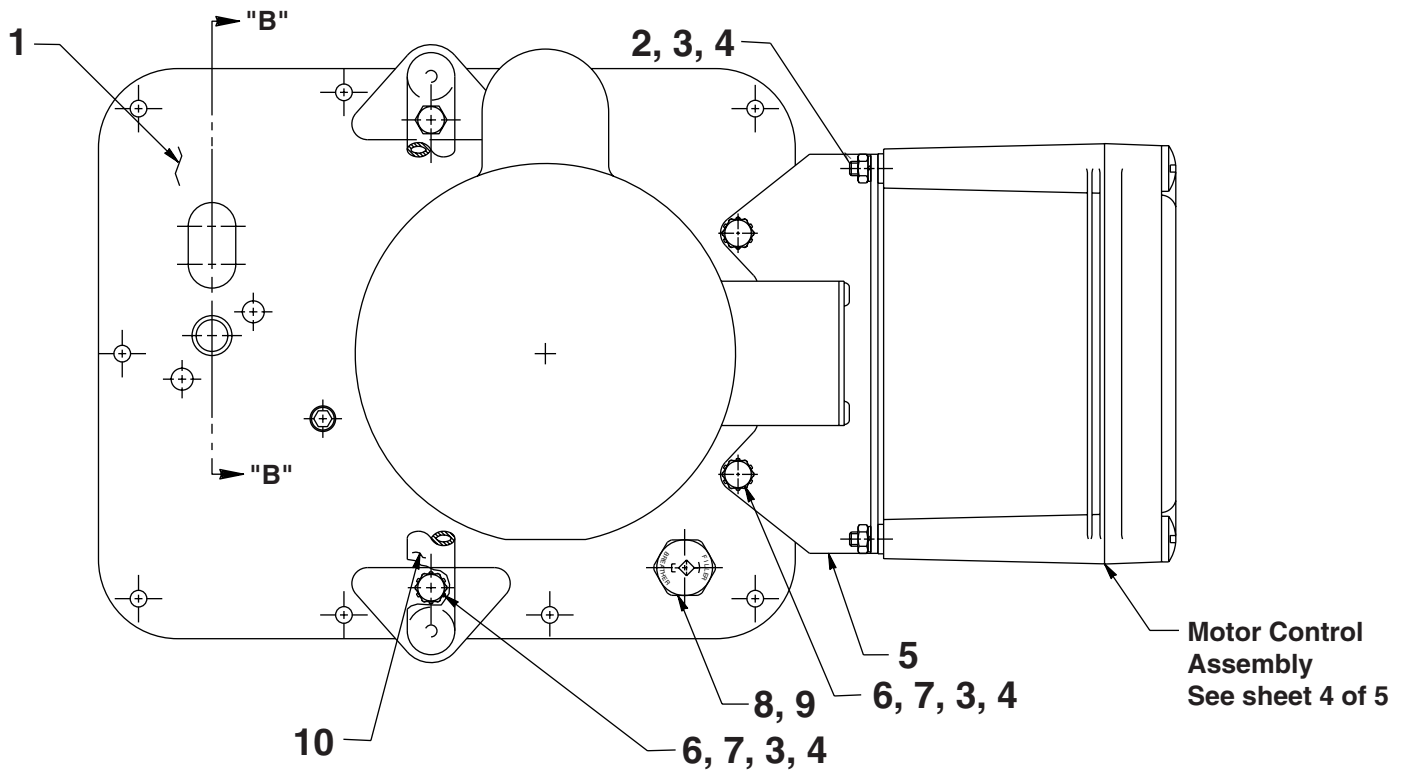


Refer to any operating instructions included with this product for detailed information about operation, testing, disassembly, reassembly, and preventive maintenance.

Items found in this parts list have been carefully tested and selected. **Therefore: Use only genuine Power Team replacement parts!**

Additional questions can be directed to our Technical Services Department.

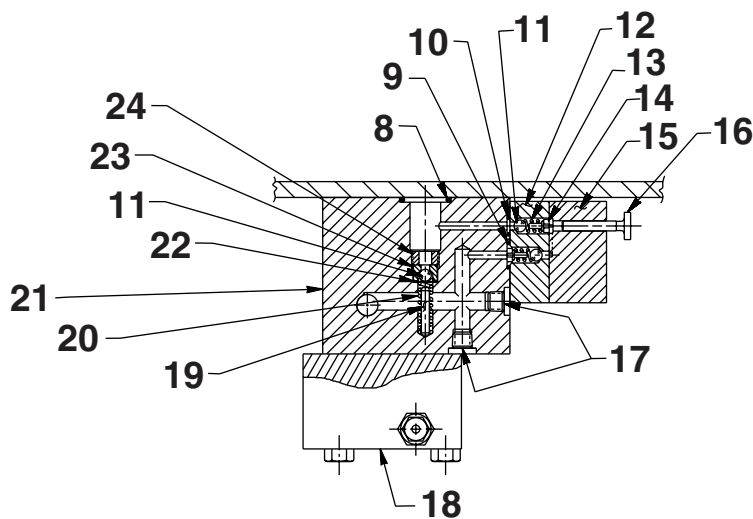
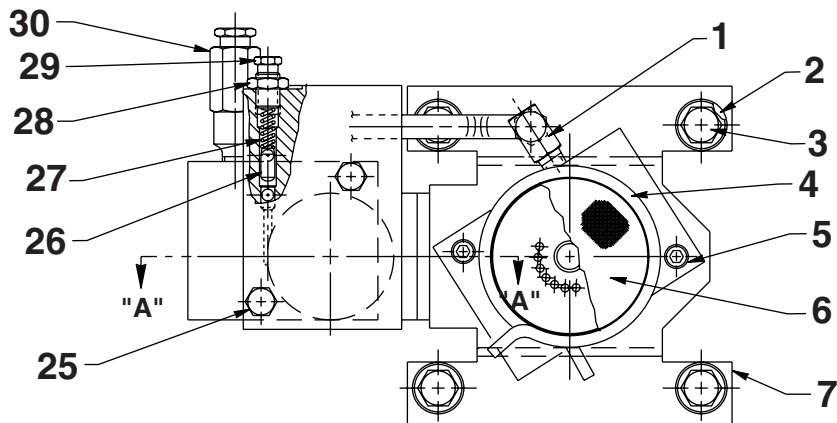
TOP VIEW & SECTION B-B



SECTION B-B

Item No.	Part No.	No. Req'd	Description	Item No.	Part No.	No. Req'd	Description
1	64966BK2	1	Plate, Cover	10	47492	1	Handle
2	10008	4	Screw, Socket HD (1/4-20 x 3/4)	11	12042	1	Washer, Special (.56 x .38)
3	10245	8	Washer, Lock (.49 x .26)	12	252179	1	Seat, Replaceable
4	10199	8	Nut, Hex (1/4-20)	13	10377	1	Ball (5/16" Dia. Steel)
5	64877BK2	1	Bracket, Mounting	14	252180	1	Screw, Hol Lock (5/8-18 x 9/16; Torque to 180/200 in. lbs.)
6	10009	4	Screw, Hex HD Cap (1/4-20 x 3/4; Torque to 60/80 in. lbs.)	15	421305	1	Piston, Auto Valve
7	11351	4	Washer, Tooth Ext (.50 x .26)	16	10280	1	O-ring (1.37 x 1.12 Nitrile)
8	20937	1	Cap, Vent	17	16346	1	Spring (.98 OD x .88 x .10 WS)
9	200415	1	O-ring (.81 x .63 Nitrile)	18	251141	1	Pin, Dowel (.19 x .88)

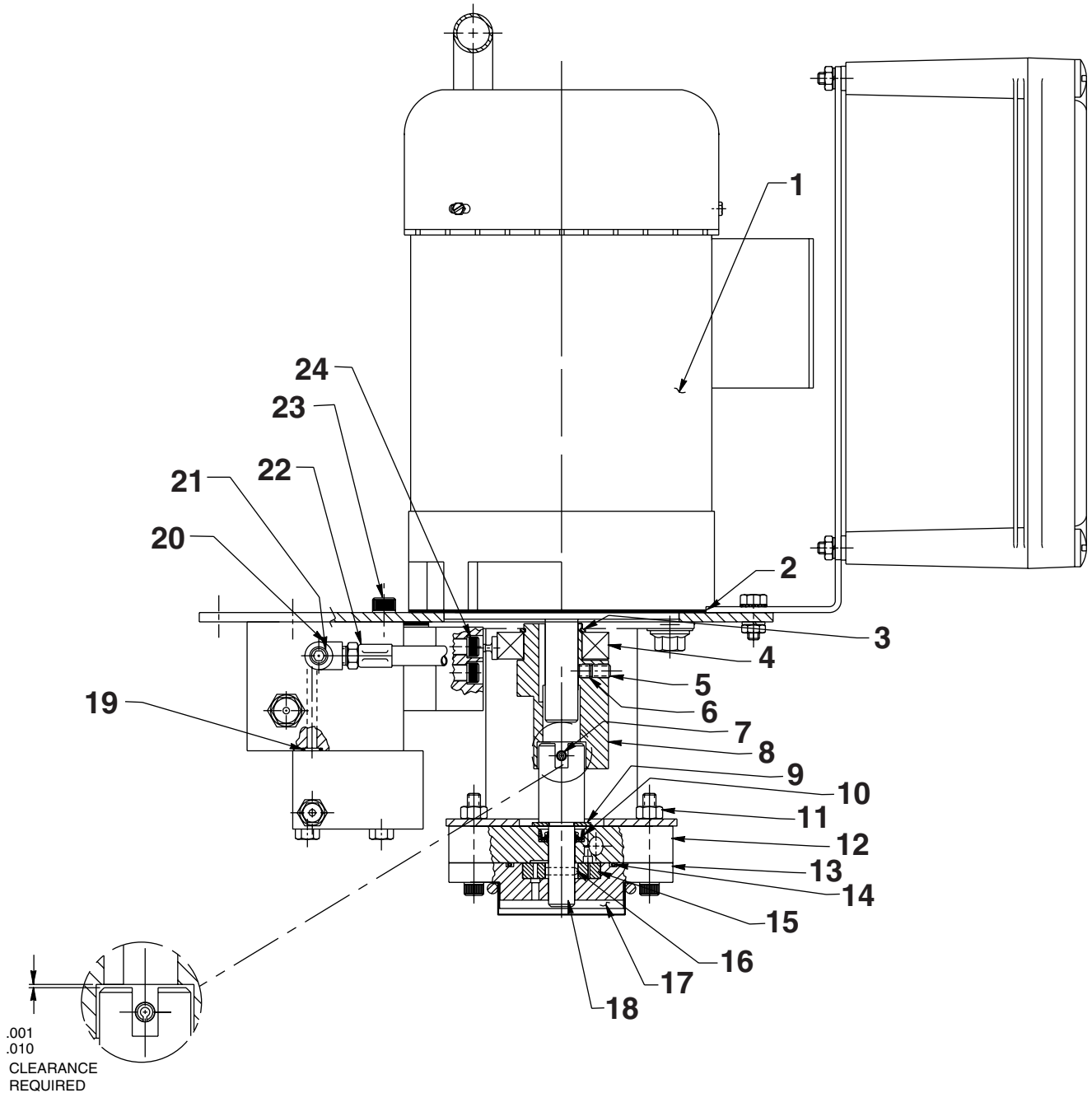
BOTTOM VIEW & SECTION A-A



SECTION A-A

Item No.	Part No.	No. Req'd	Description	Item No.	Part No.	No. Req'd	Description
1	14440	1	Fitting, Elbow (90° 1/8 NPTF)	17	15130	2	Fitting, Plug (1/6 PTF)
2	10258	4	Washer, Plain (.82 x .41)	18	58808	1	Body, Automatic Valve
3	213663	4	Screw, Flg Hex HD (3/8-16 x 1; Torque to 230/250 in. lbs.)	19	12149	1	Pin, Dowel (.13 x .75)
4	11461	1	Clamp, Hose	20	16057	1	Spring (.18 OD x 1.00 x .02 WS)
5	10854	2	Screw, Soc HD (1/4-20 x 1-3/4; Torque to 60/80 in. lbs.)	21	65226	1	Body, Check
6	21608	1	Filter	22	10442	1	Washer, Copper (.37 x .25)
7	52174	1	Bracket, Pump Mounting	23	209787	1	Seat, Replaceable
8	10273	1	O-ring (.81 x .63 Nitrile)	24	209797	1	Screw, Hol Lock (7/16-20 x 1/4; Torque to 180/200 in. lbs.)
9	14763	1	O-ring (.43 x .31 Urethane)	25	13037	2	Screw, Hex HD Cap (1/4-20 x 2; Torque to 40/50 in. lbs.)
10	10265	1	O-ring (.31 x .18 Nitrile)	26	211080	1	Pin
11	12223	3	Ball (3/16" Dia. Steel)	27	11221	1	Spring .24 OD x 1.00 x .05 WS)
12	45559	1	Block	28	10386	1	Nut, Hex Jam (3/8-24)
13	10445	2	Spring (.16 OD x .72 x .01 WS)	29	29786	1	Nut, Adjusting (3/8-24)
14	24549	2	Guide, Ball	30	21278	1	Valve, Relief (Set at 10,100/10,700 PSI)
15	45560	1	Block				
16	304820	1	Piston				

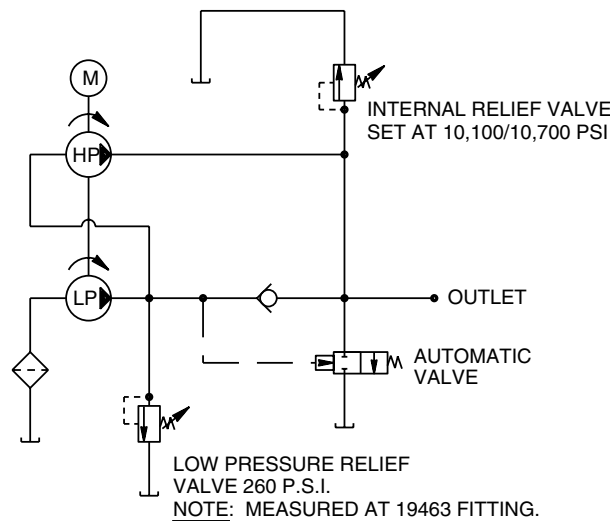
BASIC PUMP ASSEMBLY



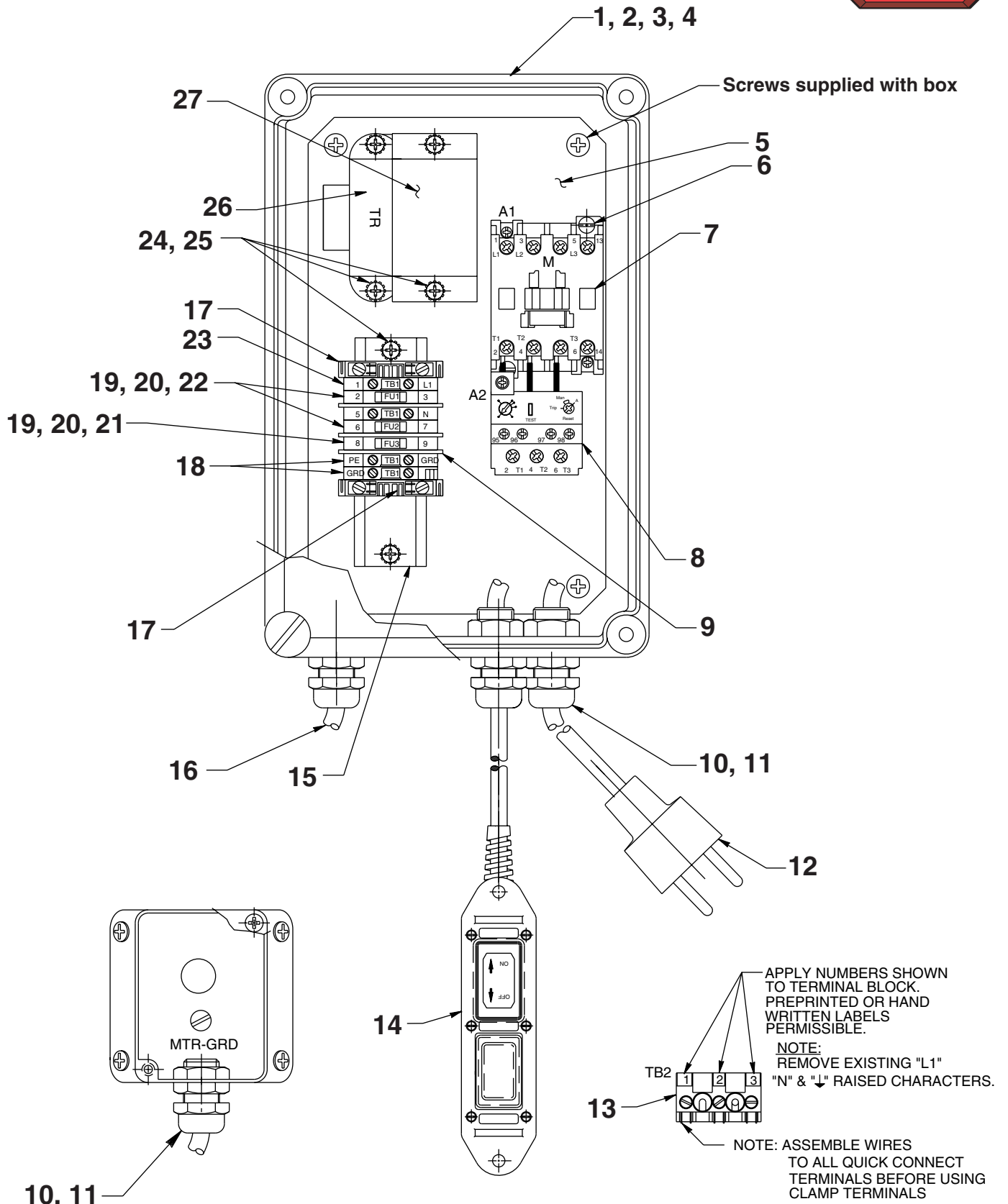
Item No.	Part No.	No. Req'd	Description	Item No.	Part No.	No. Req'd	Description
1	58687	1	Motor, Elec (110/220V, 50HZ)	13	61169	1	Housing, Lower Gerotor
2	351060	1	Gasket, Motor Base	14	10922	1	O-ring (2.12 x 1.93 Nitrile)
3	209798	1	Ring, Retain Ext (1.18 x .052)	15	304826	1	Set, Gerotor
4	209805	1	Bearing, Ball	16	209794	1	Pin, Gerotor Drive
5	10519	1	Screw, Hex Set (1/4-20 x 3/8 Lg; Torque to 60/80 in. lbs.)	17	21846	1	Support, Filter
6	10136	1	Screw, Hex Set (1/4-20 x 1/4 Lg; Torque to 60/80 in. lbs.)	18	304835	1	Shaft, Drive
7	10973	1	Pin, Spring Slotted (.19 x 1.25)	19	10266	1	O-ring (.37 x .25 Nitrile),
8	45596	1	Eccentric	20	19463	1	Fitting, Tee (1/8 NPTF)
9	12595	1	Washer, Brass (1.13 x .51)	21	10427	1	Fitting, Plug (1/8 NPTF)
10	304830	1	Seal, Oil (.88 x .50 Nitrile)	22	304819	1	Hose (1/2 ft. Polyurethane)
11	10199	2	Nut, Hex (1/4-20)	23	10030	1	Screw, Soc HD (5/16-18 x 3/4; Torque to 220/240 in. lbs.)
12	61170	1	Housing	24	10022	4	Screw, Soc HD (1/4-20 x 1-1/2; Torque to 180/200 in. lbs.)



HYDRAULIC SCHEMATIC



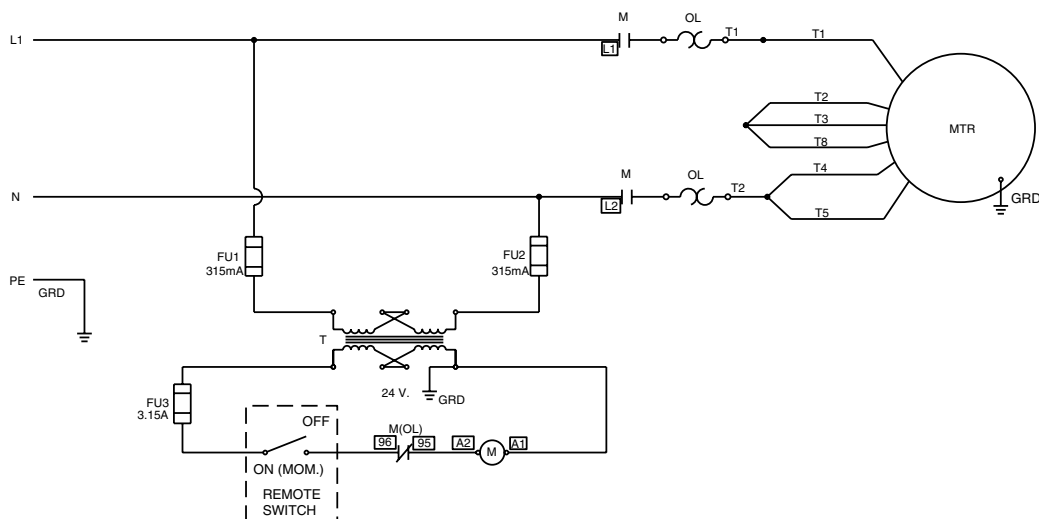
MOTOR CONTROL ASSEMBLY



Item No.	Part No.	No. Req'd	Description
1	251875	1	Box, Control
2	251762	1	Decal, Warning
3	251898	1	Decal, Warning (CE Elec)
4	350988	1	Decal (CE)
5	421153	1	Plate, Mounting
6	12409	2	Screw, Round HD (8-32 x 5/8)
7	422011	1	Contact
8	360022	1	Relay, Overload (Set at 5.5 AMPS)
9	251847	3	Plate, Partition
10	216666	4	Bushing, Stain Relief
11	216680	4	Locknut, Conduit
12	251839	1	Cord (8' Lg. 250 Vac 1.5mm/3 HAR)
13	251550	1	Block, Terminal
14	251881	1	Control, Hand (See sheet 5 of 5)
15	253688	1	Rail, Din Mounting
16	251879	2.25 ft.	Cable, Electrical (1.5mm/3 HAR)
17	251843	2	Anchor, End
18	251841	2	Block, Grounding Terminal
19	251849	3	Block, Fuse
20	251848	3	Block, Terminal Fuse
21	251857	1	Fuse (3.15 Amp 250V)
22	251855	2	Fuse (315 MAMP 250V)
23	251840	2	Block, Terminal
24	13158	6	Screw, Round HD (8-32 x 1/4)
25	11388	6	Washer, Tooth Ext (.37 x .17)
26	351119	1	Transformer
27	421146	1	Cover, Transformer

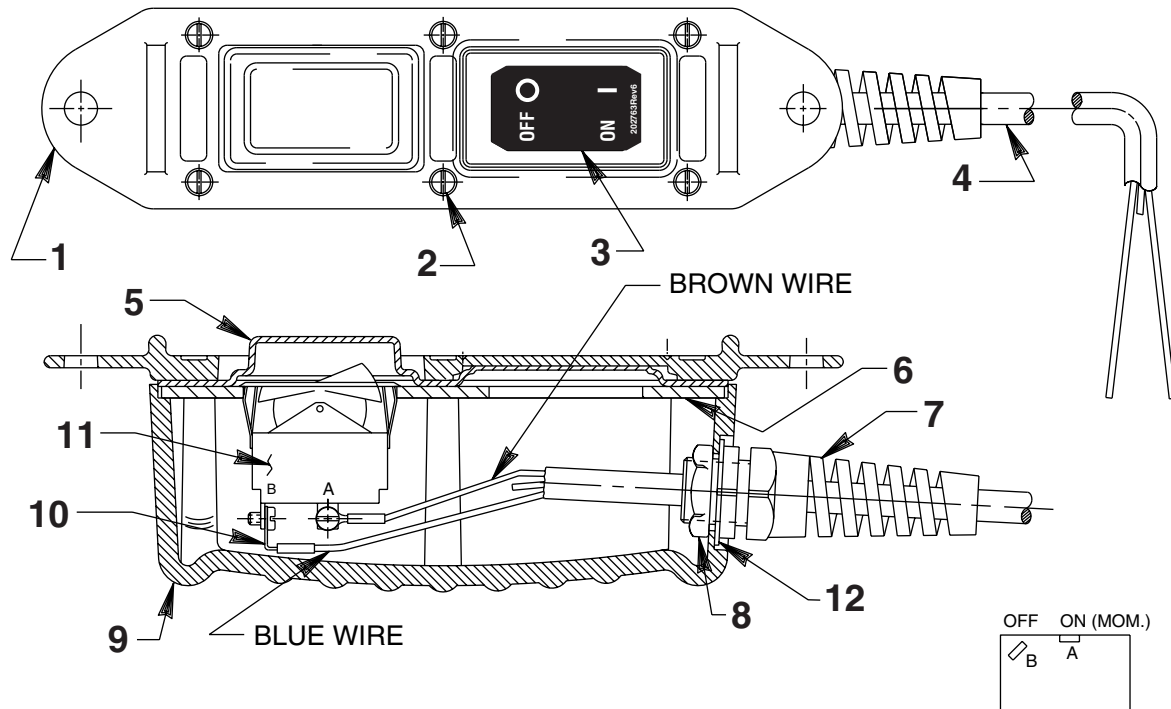


ELECTRICAL SCHEMATIC



Note: Shaded areas reflect last revision(s) made to this form.

REMOTE HAND SWITCH ASSEMBLY



Item No.	Part No.	No. Req'd	Description
1	420050-1	1	Cover, Plastic
2	250248	6	Screw, Pan Head (4-24 x 3/4)
3	202763	1	Decal (On/Off)
4	251879	10 ft.	Cable (1.5mm/3 HAR)
5	420050-2	1	Gasket, Remote Hand Switch
6	420050-3	1	Plate, Switch Mouting
7	251818	1	Bushing, Strain Relief
8	251802	1	Nut, Hex Lock (PG11 Thread; Torque to 30/35 in. lbs.)
9	420050-4	1	Housing, Switch
10	10525	2	Terminal, Ring Tongue
11	16772	1	Switch, Rocker
12	253607	1	Gasket

Note: Shaded areas reflect last revision(s) made to this form.