

**MODEL B
DOUBLE-ACTING
HYDRAULIC CYLINDER**

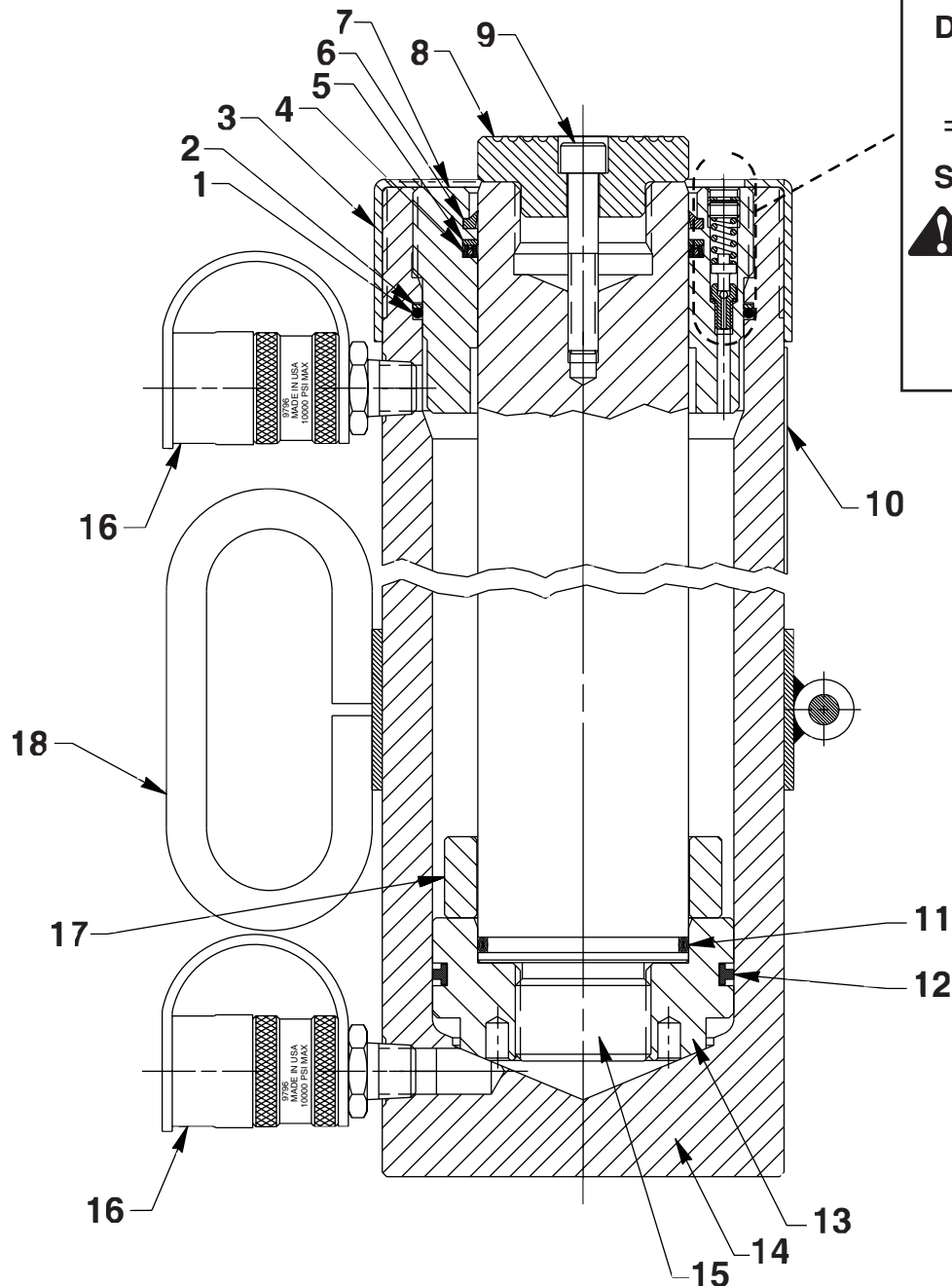
Max. Capacity: 55.2 Tons at 10,000 PSI (Push)
28.2 Tons at 10,000 PSI (Pull)

To Parts
List

Double-acting
Cylinder
Relief Valve

See important

! DANGER
statement
on back of
sheet 1 of 1





DANGER: To help avoid possible serious personal injury or death,

- In the event that the cylinder retract port is ever restricted or plugged, a double-acting cylinder relief valve will help prevent excessive pressure from building in the cylinder. **DO NOT** attempt to adjust or service this relief valve! If oil leakage is detected from this relief valve, discontinue use of the cylinder immediately and contact Power Team Technical Services. Only Power Team Authorized Hydraulic Service Centers should service this relief valve.

Item No.	Part No.	No. Req'd	Description
1	*12599	1	O-ring (4.25 x 4.00 Nitrile)
2	*19331	1	Washer, Backup (4.25 x 4.00)
3	421431	1	Protector, Thread
4	*19333	1	U-cup (3.00 x 2.63 x .19 H)
5	*19152	1	Washer, Backup (3.00 x 2.63)
6	*207721	1	Wiper, Rod (3.00 x 2.63 URE)
7	51332	1	Nut, Retainer (3/8-24; Torque to 100 ft. lbs. oiled)
8	38449	1	Insert, Serrated
9	12866	1	Screw, Soc HD (3/8-16 x 2-1/4)
10	351866	1	Decal, Tradename (Power Team)
11	*19334	1	O-ring (2.62 x 2.37 Urethane)
12	*15381	1	T-seal (3.75 x 3.38 x .27 L)
13	43305	1	Head, Piston (Use Loctite 277 when assembling piston head to piston rod [Item 15] & torque to 200 ft. lbs.)
14	59229	1	Body, Cylinder
15	59230	1	Rod, Piston
16	9796	2	Coupler, Quick Cylinder Half
17	253387	1	Spacer
18	420396OR9	1	Handle, Cylinder Lift

PARTS INCLUDED BUT NOT SHOWN

*37782 1 Decal, Warning

Part numbers marked with an asterisk (*) are contained in Repair Kit No. 300005.



Refer to any operating instructions included with this product for detailed information about operation, testing, disassembly, reassembly, and preventive maintenance.

Items found in this parts list have been carefully tested and selected. **Therefore: Use only genuine Power Team replacement parts!**

Additional questions can be directed to our Technical Services Department.