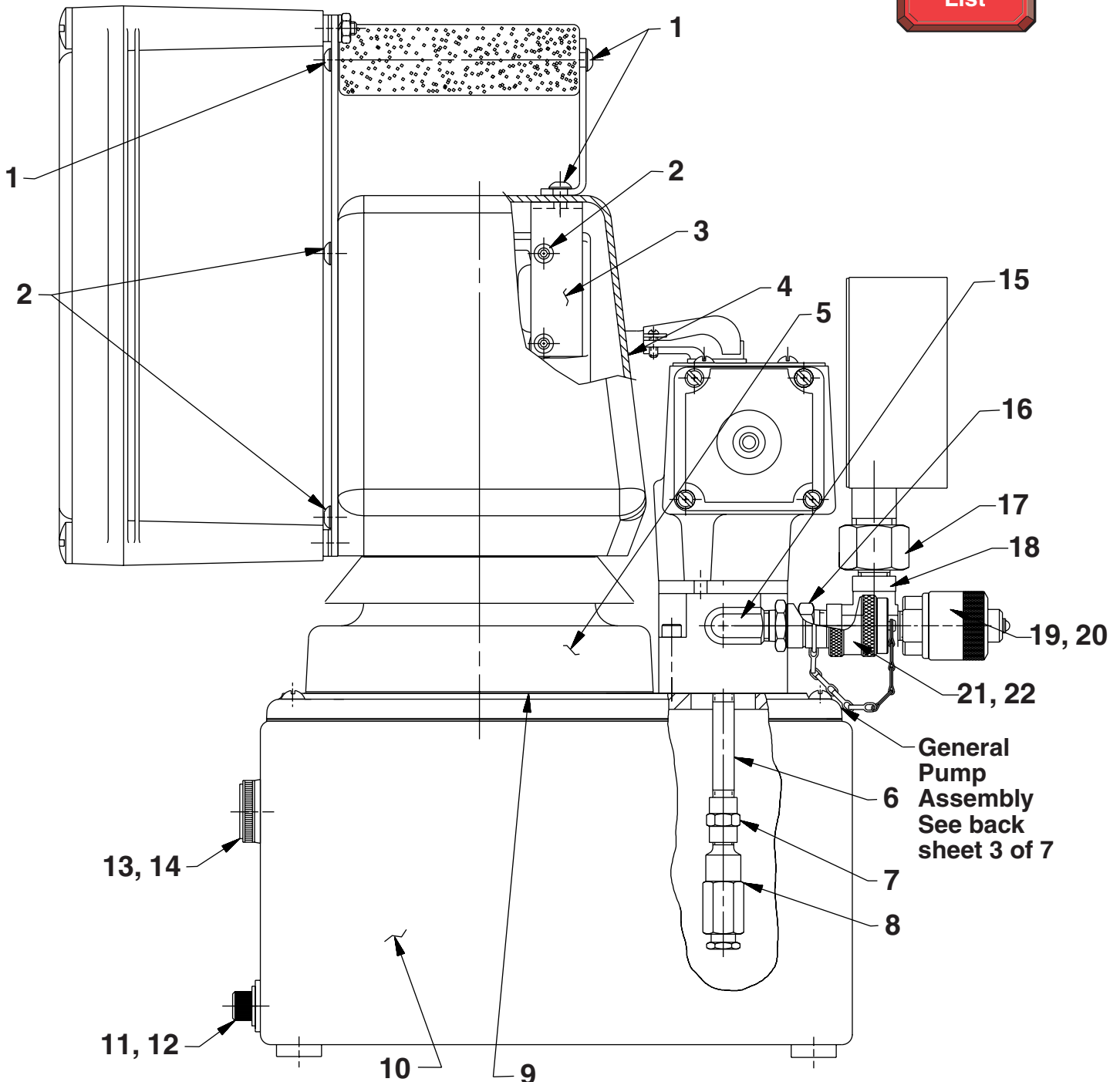


MODEL A ELECTRIC HYDRAULIC PUMP SIDE VIEW



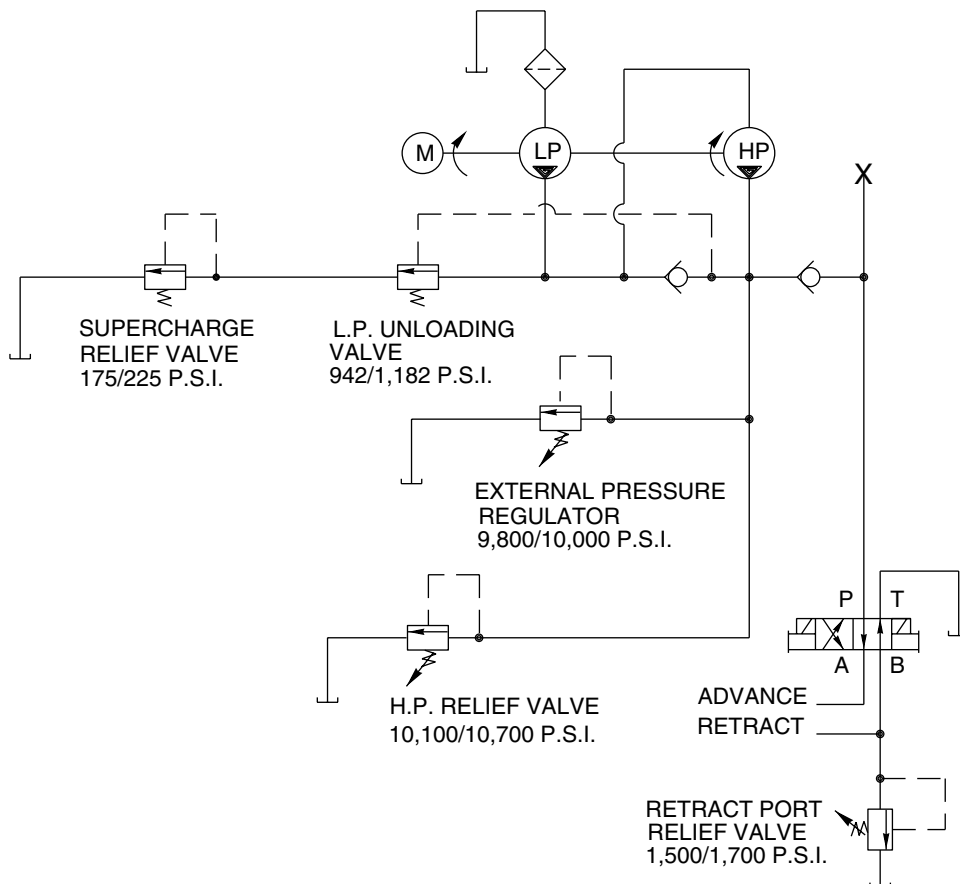
General Pump Assembly
See back sheet 3 of 7

Item No.	Part No.	No. Req'd	Description
1	251437	4	Button Hd Screw (1/4-20 x 1/2)
2	251486	3	Button Hd Screw (10-24 x 1/2)
3	421212	1	Bracket
4	66041	1	Cover
5	65249	1	Electric Motor (See back sheet 2 of 7)
6	15456	1	Straight Fitting (1/8 NPTF)
7	18841	1	Straight Fitting
8	21278-15	1	Relief Valve (Set at 1,500/1,700 PSI)
9	30650	1	Motor Base Gasket
10	*420327	1	Reservoir
11	10412	1	Soc. Hd. Cap Screw (3/8-16 UNC x 1/2 Lg.)
12	19779	1	Seal Washer
13	17586	1	Sight Gauge
14	253300	1	Seal Washer
15	10617	1	Elbow Fitting (90°, 1/4 NPTF)
16	10672	1	Straight Fitting (1/4 NPTF)
17	11965	1	Straight Fitting (1/4 NPTF)
18	10618	1	Tee Fitting (1/4 NPTF)
19	251411	1	Quick Plug Coupler
20	252365	1	Dust Cap
21	251410	1	Quick Coupler
22	252364	1	Dust Cap

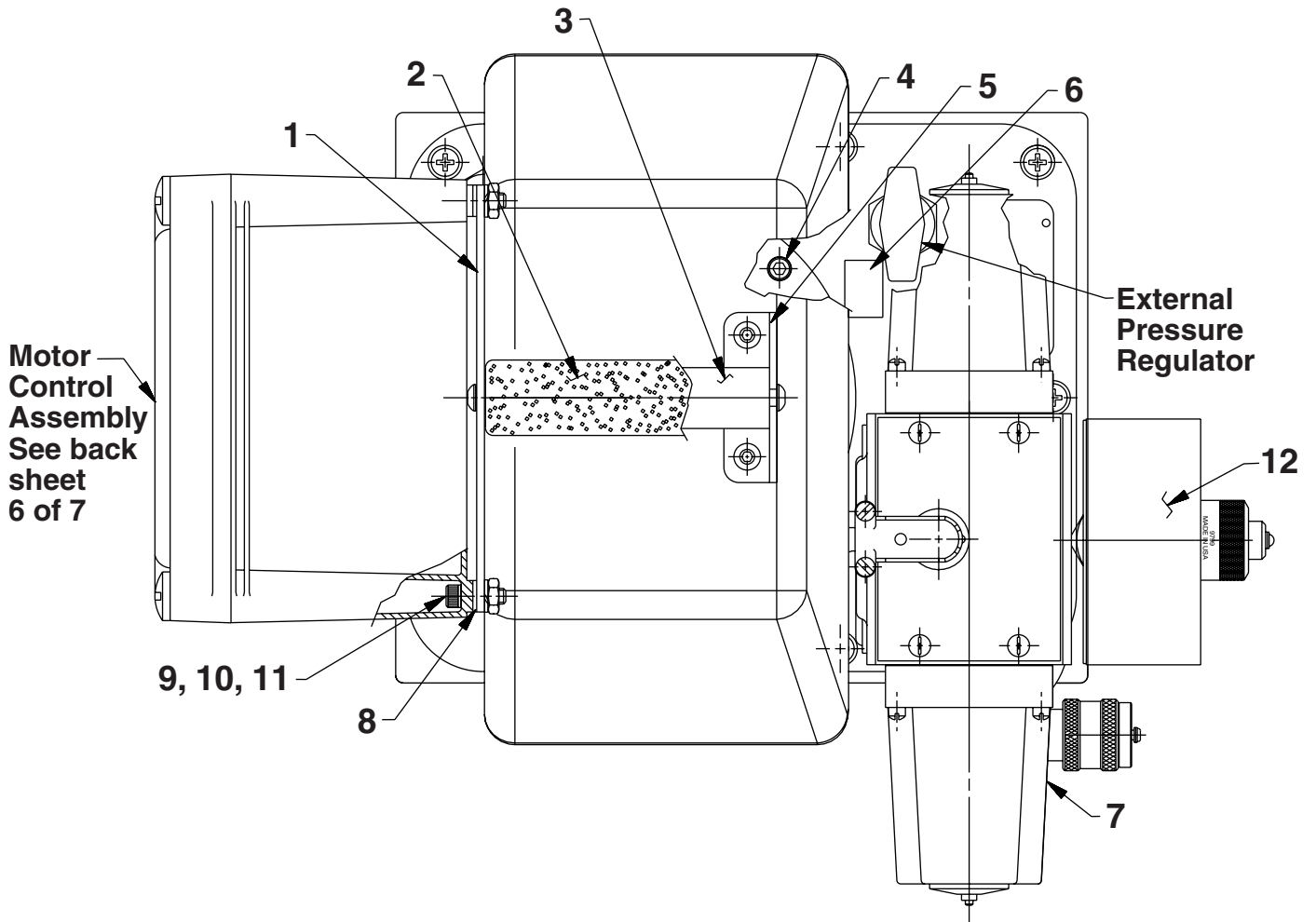
*For a replacement reservoir, order no. 351118.



HYDRAULIC SCHEMATIC

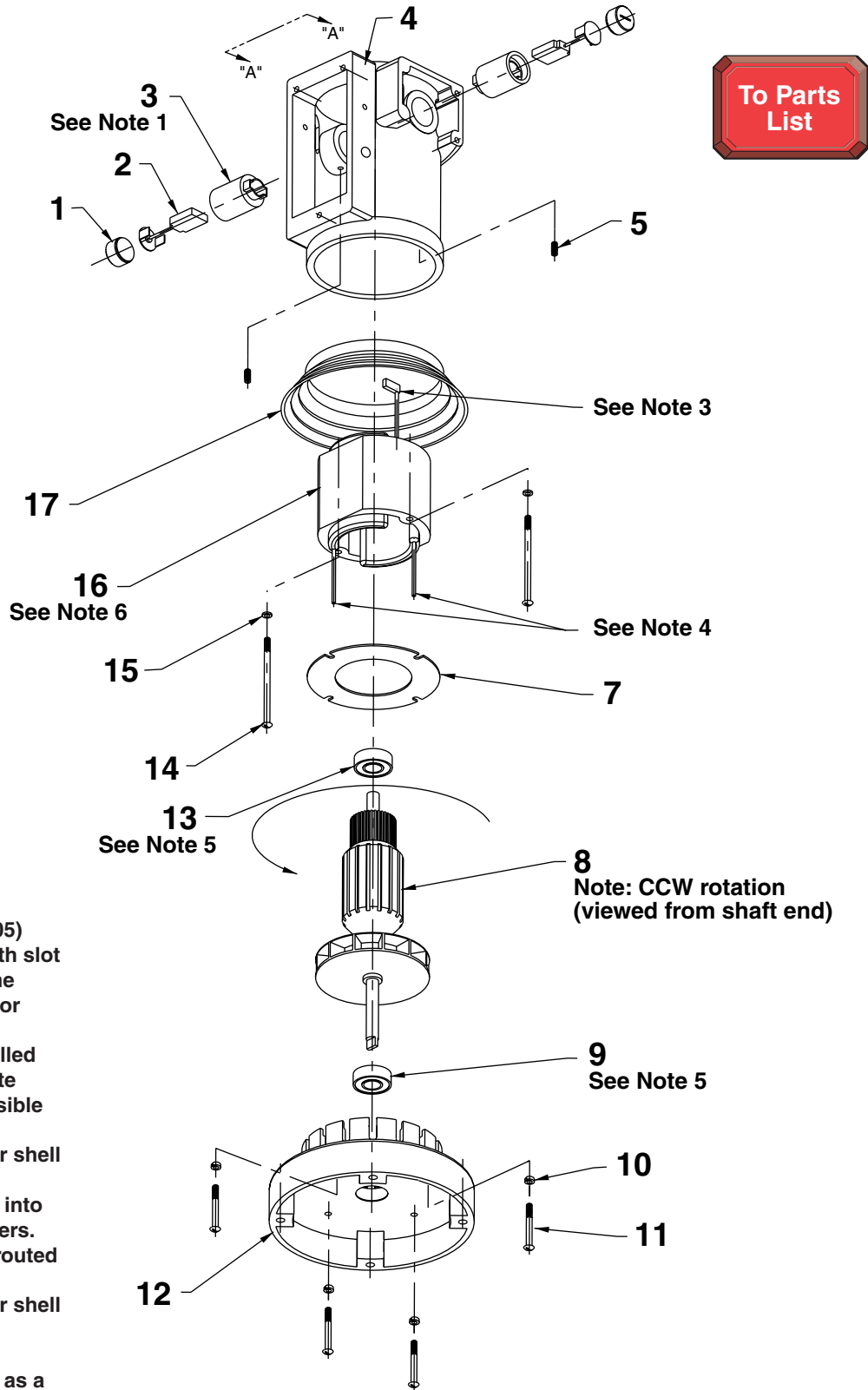


TOP VIEW



Item No.	Part No.	No. Req'd	Description
1	58741BK2	1	Mounting Bracket
2	216668	1	Handle Grip
3	252020	1	Handle
4	10022	4	Soc Hd Screw (1/4-20 x 1-1/2)
5	351189BK2	1	Handle Bracket
6	252047	1	Instruction Decal
7	9552	1	Solenoid Valve (See Form No. 108066)
8	12719	4	Plain Washer (.63 x .29)
9	10008	4	Soc Hd Screw (1/4-20 x 3/4)
10	10245	4	Lockwasher
11	10199	4	Hex Nut (1/4-20)
12	351938	1	Gauge, Pressure (4" Dia.)

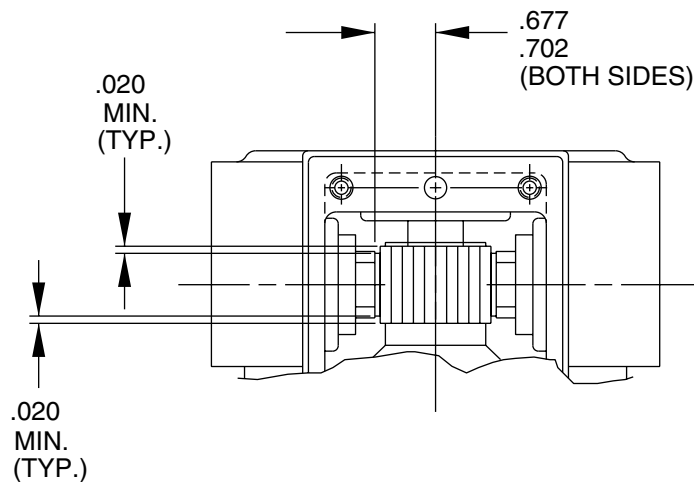
ELECTRIC MOTOR ASSEMBLY



Item No.	Part No.	No. Req'd	Description
1	10806	2	Brush Holder Cap
2	10804	2	Brush
3	10805	2	Brush Holder
4	65064	1	Motor Shell
5	10133	2	Set Screw (#10-24 UNC X 1/4 Lg.)
7	20786	1	Baffle Plate
8	10800	1	Armature (115 volt)
9	10438	1	Ball Bearing
10	10241	4	Lockwasher (For #10 bolt)
11	10169	2	Screw (#10-24 UNC X 2" Lg.; Torque to 20/25 in. lbs.)
12	40059WH2	1	Motor Base
13	10439	1	Ball Bearing
14	10170	2	Screw (#10-24 UNC X 3-1/4 Lg.)
15	12356	2	Washer (#10 Internal Tooth)
16	10802	1	Field (115 volt)
17	421204	1	Plastic Cover

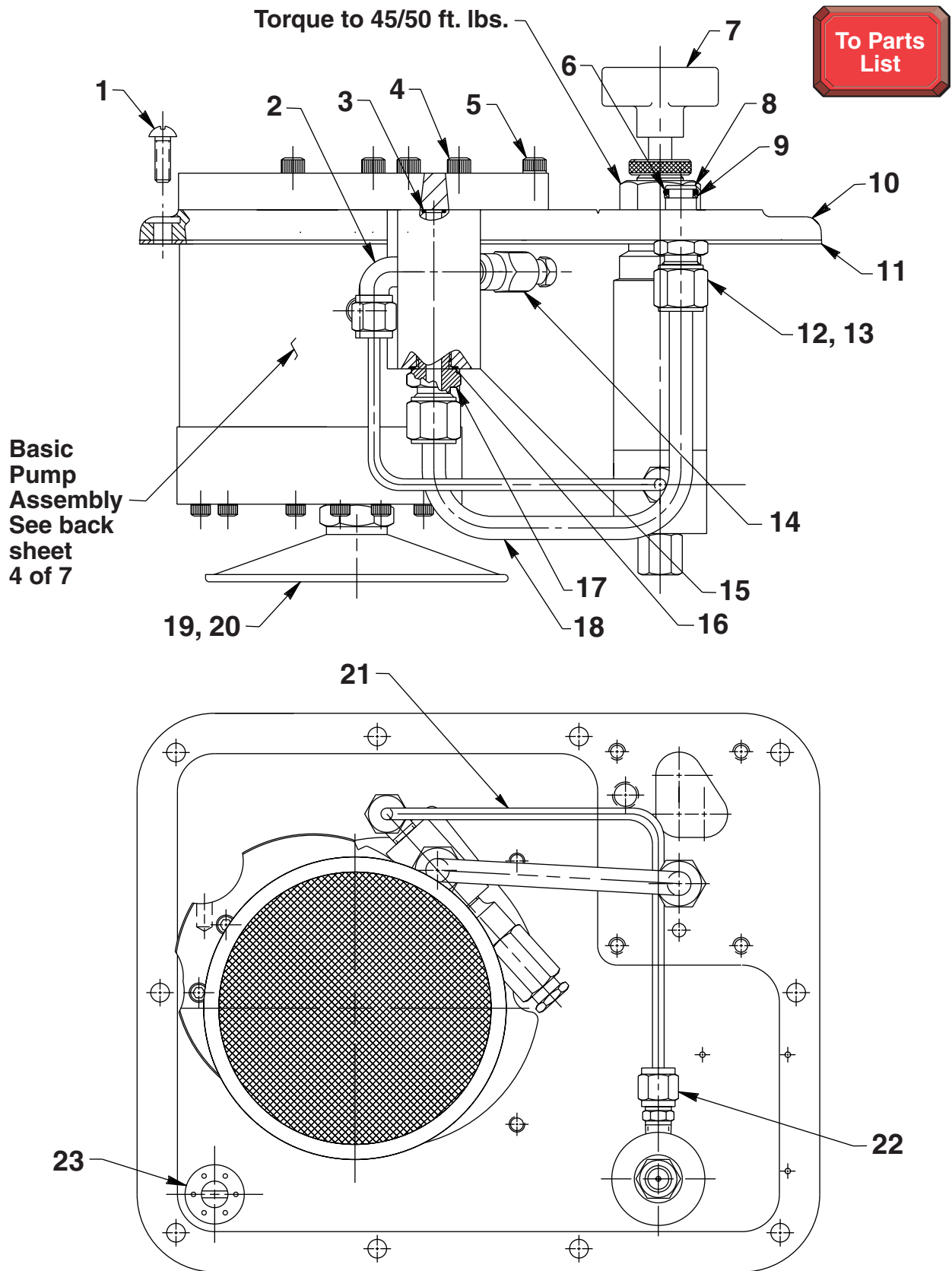


BRUSH HOLDER & ARMATURE INSTALLATION SPECIFICATION



When replacing brushes or the armature, the dimensions shown must be as specified.

GENERAL PUMP ASSEMBLY



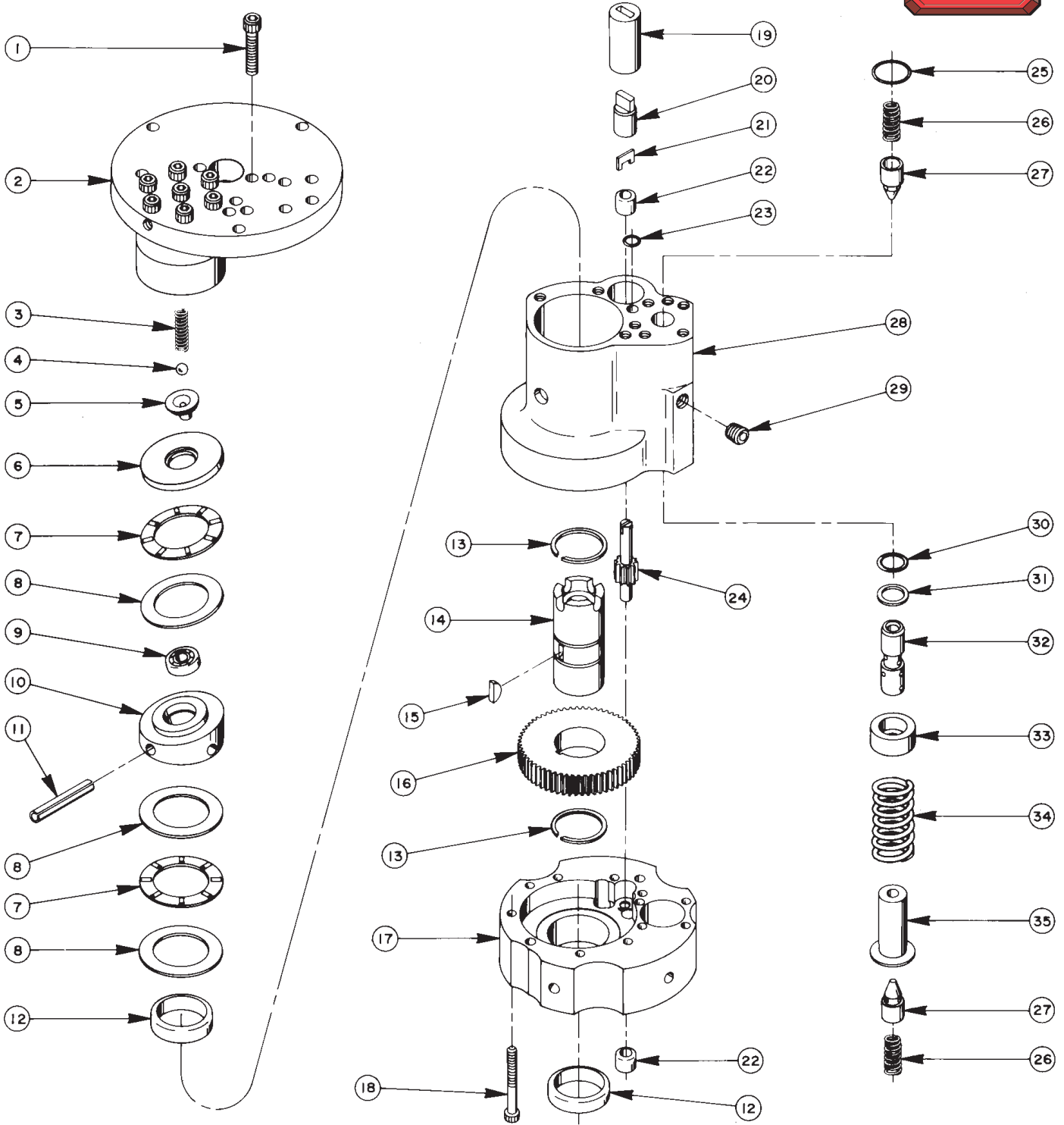
Item No.	Part No.	No. Req'd	Description
1	10177	10	Machine Screw (1/4-20 x 3/4 Lg.)
2	16177	1	90° Elbow Fitting
3	10266	2	O-ring (1/4 x 3/8 x 1/16)
4	10015	2	Cap Screw (1/4-28 x 1" Lg.; Torque to 130/180 in. lbs.)
5	10016	3	Cap Screw (1/4-20 UNC X 1" Lg.)
6	10268	1	O-ring (3/8 x 1/2 x 1/16)
7	421280	1	Pressure Regulator Assembly (See Form No. 101697)
8	20787	1	Valve Connector
9	11863	1	Teflon Backup Washer
10	64017	1	Plate, Cover
11	40164	1	Gasket, Reservoir
12	10430	2	Tube Sleeve (3/8)
13	10431	2	Tube Nut
14	21278	1	Relief Valve Assembly (Set at 10,100-10,700 PSI)
15	20776	1	Valve Body
16	10261	1	Copper Washer
17	20770	1	Connector Fitting (Torque to 40/45 ft. lbs.)
18	21045	1	Oil Line Tube
19	21344	1	Filter Assembly (Includes item no. 20)
20	10300	1	O-ring (Included with filter [Item #19])
21	350046	1	Tube, Pressure Regulator
22	14844	1	Fitting, Straight
23	20937	1	Filler Plug



NOTE: All items on back sheet 4 of 7 and items 3, 12, 13, 14, 15, & 17 on this sheet make up Basic Pump Assembly Replacement #27207.

BASIC PUMP ASSEMBLY

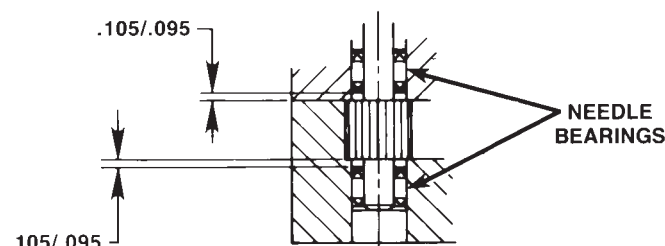
To Parts List



Item No.	Part No.	No. Req'd	Description
1	10020	9	Soc. Hd. Cap Screw (1/4-20 UNC X 1-1/4 Lg.; Torque to 170-180 in. lbs.)
2	33113	1	High Pressure Pump Ass'y (See back sheet 5 of 7)
3	10361	1	Compression Spring (1/4 O.D. X 1" Lg.)
4	10375	1	Steel Ball (1/4 dia.)
5	23547	1	Bearing Top Plate
6	23548	1	Top Plate
7	11228	2	Thrust Bearing
8	11813	3	Bearing Race
9	11814	1	Ball Bearing
10	23549	1	Angle Plate
11	11955	1	Roll Pin (1/4 dia. X 1-3/4 Lg.)
12	11064	2	Needle Bearing
13	11261	2	Retaining Ring
14	23556	1	Shaft
15	11821	1	Woodruff Key
16	23574	1	Gear
17	40072	1	Pump End Plate
18	10001	13	Soc. Hd. Cap Screw (#10-32 UNF X 1-3/4 Lg.; Torque to 50 in. lbs.)
19	21091	1	Nylon Coupling
20	21092	1	Adapter
21	21093	1	Key
22	11198	2	Needle Thrust Bearing (See Note below)
23	10266	1	O-ring (3/8 X 1/4 X 1/16)
24	20774	1	Drive Gear
25	10303	1	O-ring (7/8 X 3/4 X 1/16)
26	10425	2	Compression Spring (3/8 O.D. X 3/4 Lg.)
27	20771	2	Poppet
28	40071	1	Pump Body
29	10427	1	Pipe Plug (1/8" NPTF)
30	10271	1	O-ring (11/16 X 1/2 X 3/32)
31	12389	1	Teflon Backup Washer (11/16 X 1/2 X 1/16)
32	20849	1	Spool
33	23255	1	Spring Guide
34	10426	1	Compression Spring (1" O.D. X 1-13/16 Lg.)
35	23256	1	Spring Guide



NEEDLE BEARING INSTALLATION SPECIFICATIONS

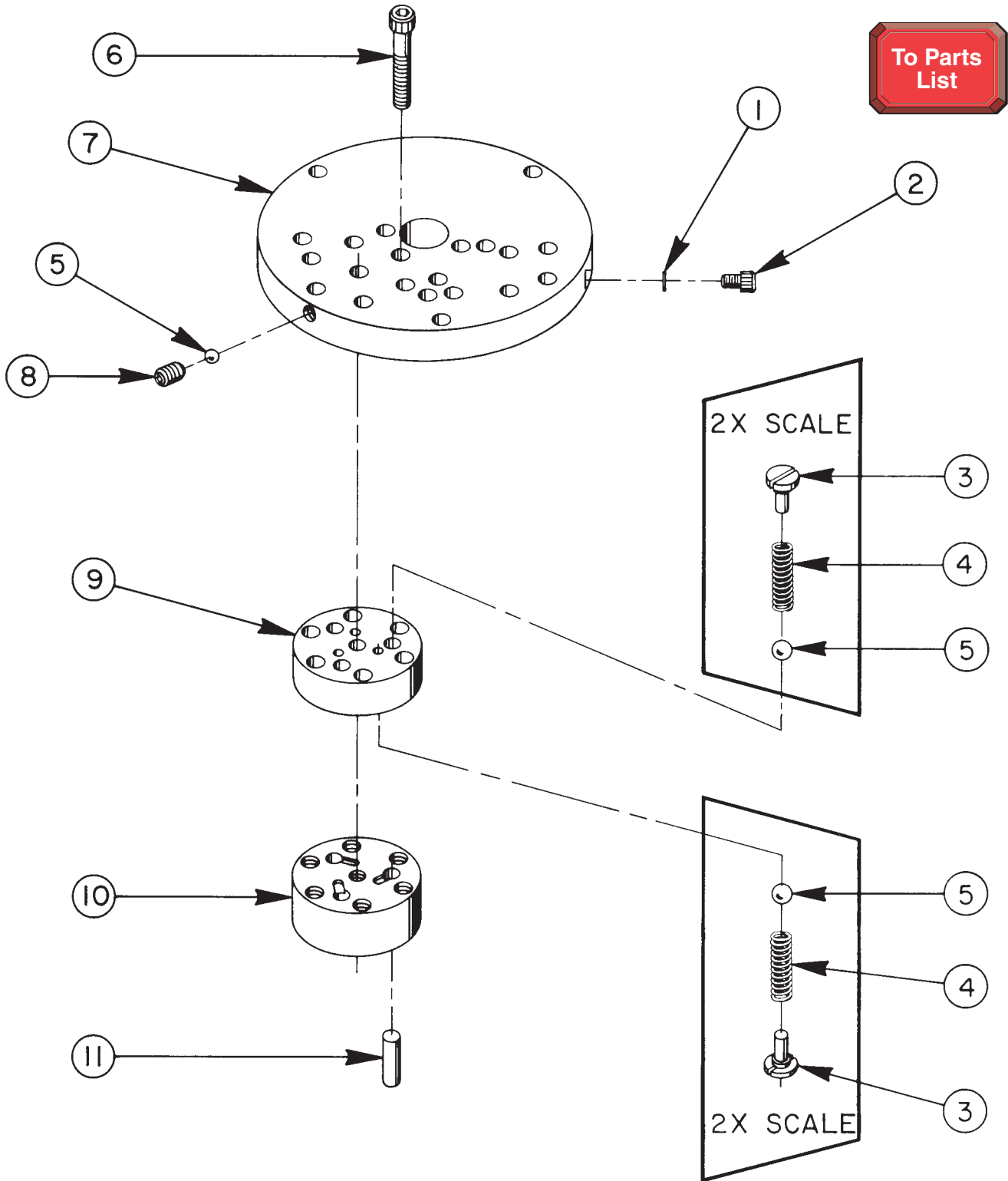


When replacing the needle bearings on the drive gear of the basic pumps, the dimensions shown must be as specified.

Sheet No. 5 of 7

Rev. 4 Date: 19 Jan. 2001

HIGH PRESSURE PUMP ASSEMBLY

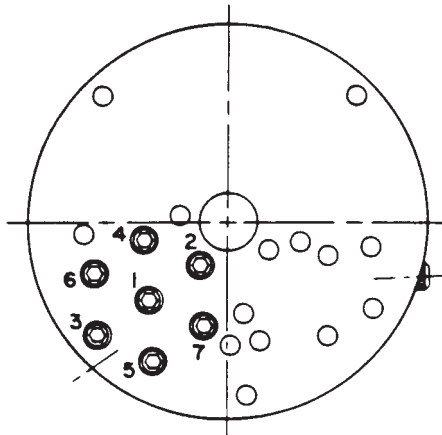


**33113 PUMP ASSEMBLY
3 PISTON - 9/32 DIA.**

Item No.	Part No.	No. Req'd	Description
1	10442	1	Copper Washer (3/8 X 1/4 X 1/32)
2	10002	1	Soc. Hd. Cap Screw (1/4-20 UNC X 3/8 Lg.; Torque to 140/160 in. lbs.)
3	24549	6	Valve Guide
4	10445	6	Compression Spring (5/32 O.D. X 3/4 Lg.)
5	12223	7	Steel Ball
6	10023	7	Soc. Hd. Cap Screw (1/4-20 UNF X 1-1/2 Lg.; Torque to 170/180 in. lbs.; See note below)
7	50411	1	Top Plate
8	10519	1	Soc. Set Screw (1/4-20 UNC X 3/8 Lg.; Torque to 65/70 in. lbs.)
9	40630	1	Valve Head
10	41062	1	Pump Barrel
11	21628	3	Piston

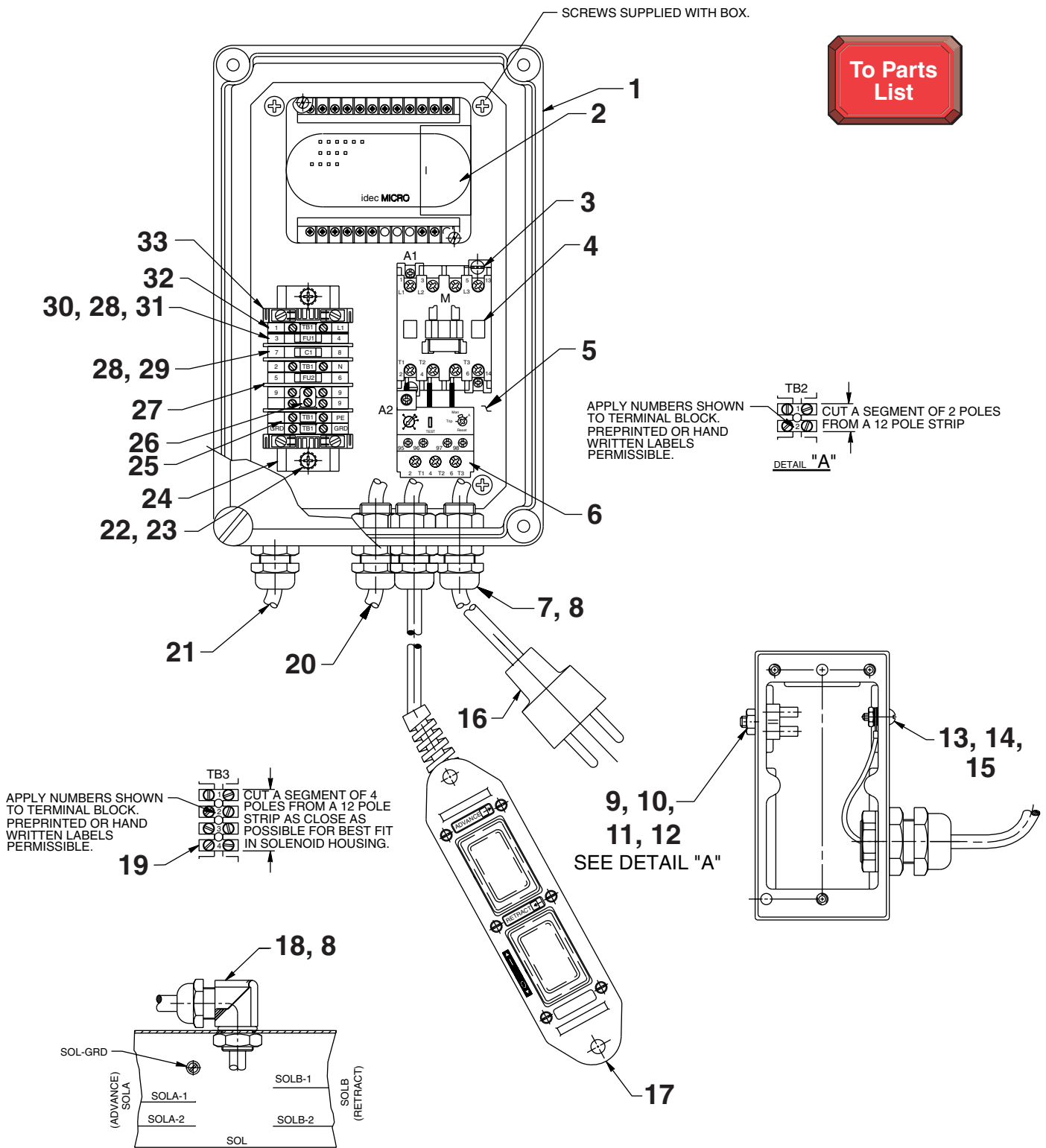


BOLT TIGHTENING SEQUENCE



**NOTE: Assemble in sequence shown.
Lubricate under head and on threads.
Torque to 180 in. lbs.**

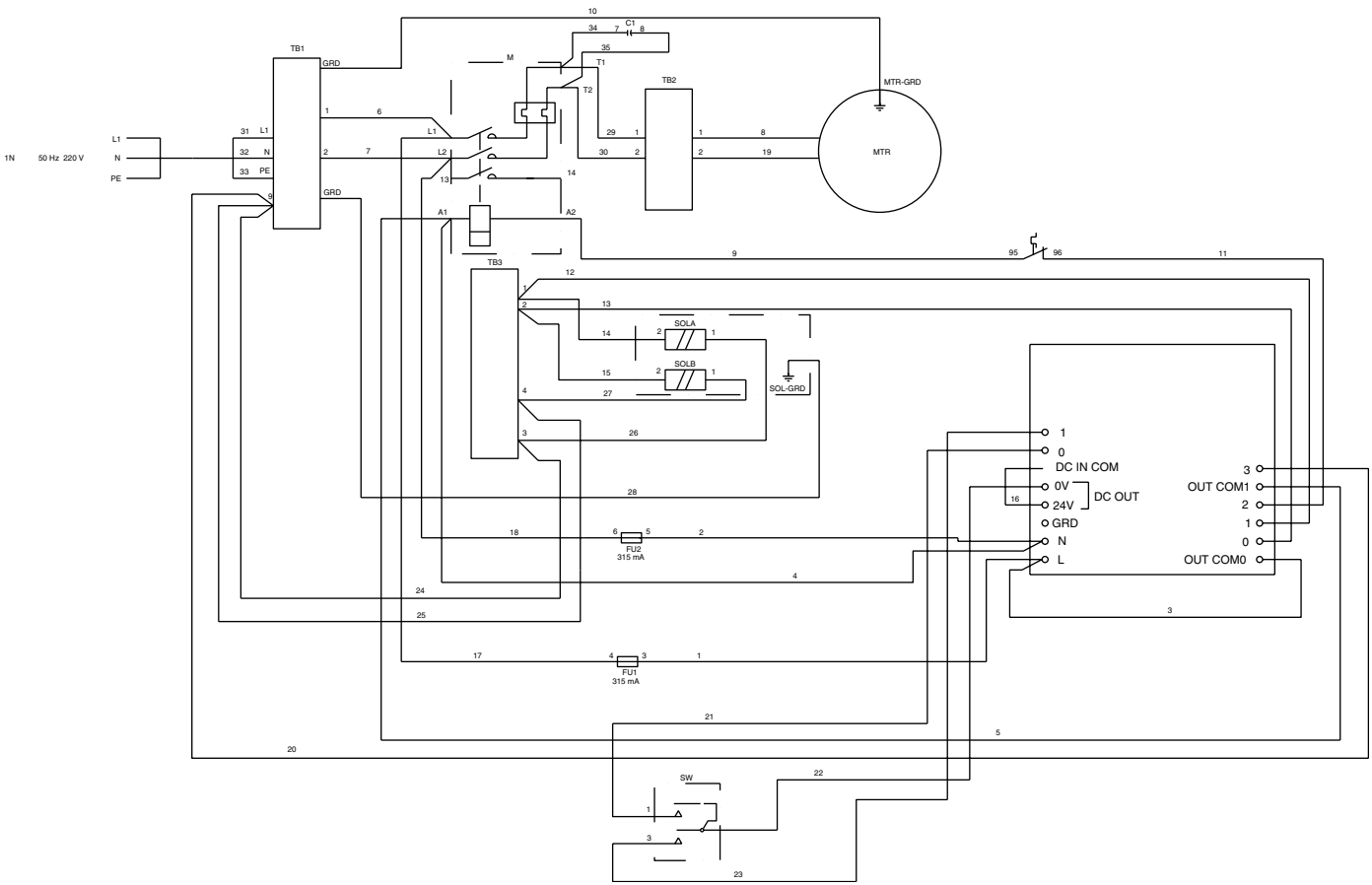
MOTOR CONTROL ASSEMBLY



Item No.	Part No.	No. Req'd	Description	Item No.	Part No.	No. Req'd	Description
1	251875	1	Box, Control	19	351130	.33	Block, Terminal
2	253433	1	Controller, Programmable Logic	20	251864	36"	Cable, Electrical (1.5 mm ² /5)
3	12409	2	Screw, Rd Hd (8-32 x 5/8)	21	251879	27"	Cable, Electrical (1.5 mm ² /3)
4	421841	1	Contactor	22	13158	2	Screw, Rd Hd (8-32 x 1/4)
5	421153	1	Plate, Mounting (Add holes for mounting components as needed.)	23	11388	2	Washer, Tooth Ext. (.37 x .17)
6	351125	1	Relay, Overload (Set at 14 AMPS)	24	253688	1	Rail, DIN Mounting
7	216666	5	Bushing, Strain Relief	25	251841	2	Block, Grounding Terminal
8	216680	6	Locknut, Conduit	26	251845	1	Jumper, Center 2 Pole
9	16099	1	Screw, Rd Hd (6-32 x 3/4)	27	251847	4	Plate, Partition
10	15906	1	Washer, Tooth Ext. (.31 x .15)	28	251848	3	Block, Terminal Fuse
11	10195	1	Nut, Hex (6-32)	29	252196	1	Capacitor
12	351130	.33	Block, Terminal	30	251849	2	Block, Fuse
13	12354	1	Screw, Rd Hd (10-24 x 5/8)	31	251855	2	Fuse, 315 MAMP 250V
14	11108	2	Washer, Tooth Ext. (.40 x .20)	32	251840	4	Block, Terminal
15	10197	1	Nut, Hex (10-24)	33	251843	2	Anchor, End
16	251839	1	Cord Set (1.5 mm ² /3; 8 ft. lg)	PARTS INCLUDED BUT NOT SHOWN			
17	421829	1	Control, Hand (See back sheet 7 of 7)	251762	1	Decal, Warning	
18	216667	1	Bushing, Strain Relief	251898	1	Decal, Warning (CE Electrical)	
				350988	1	Decal, CE	

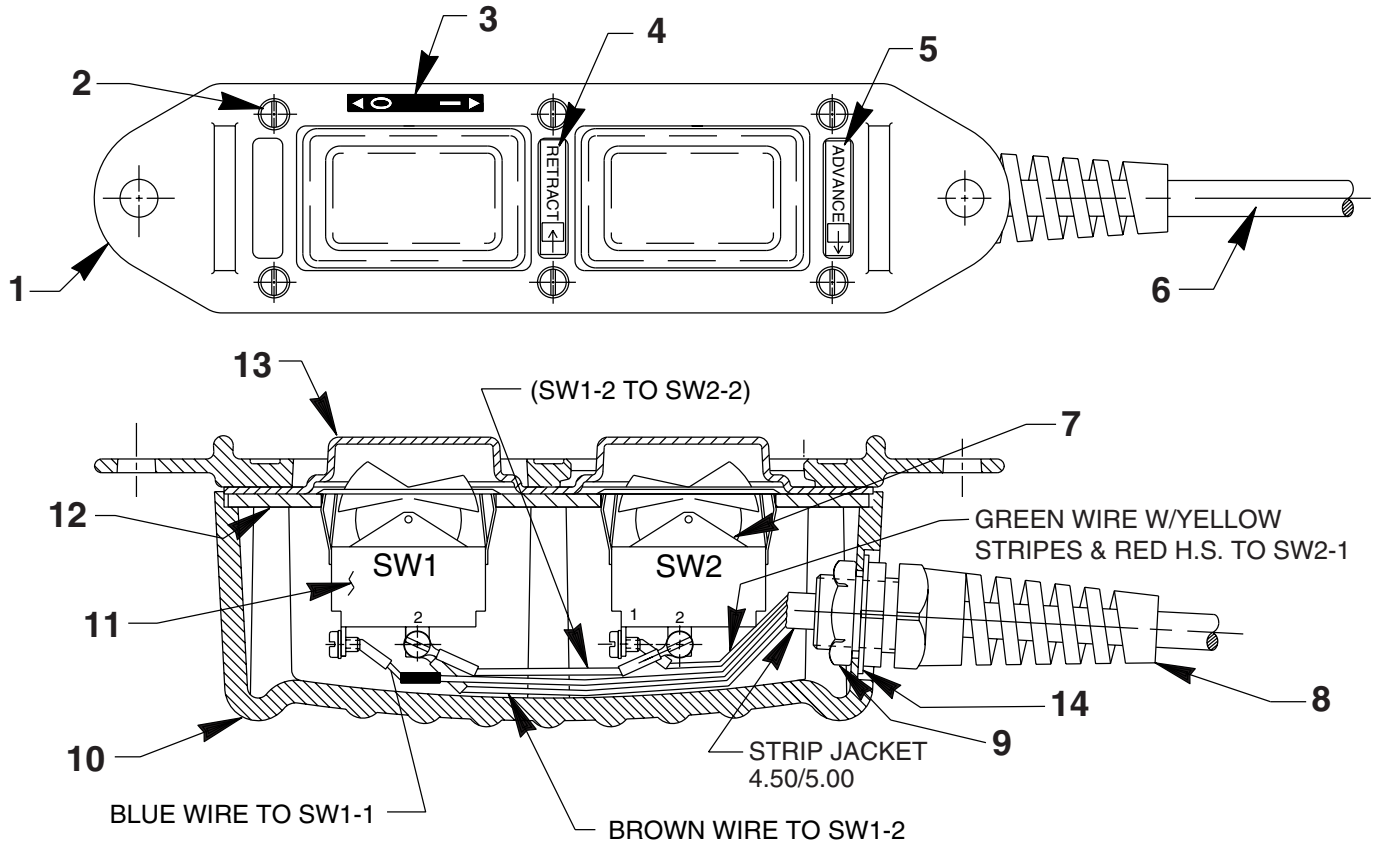


ELECTRICAL SCHEMATIC



Note: Shaded areas reflect last revision(s) made to this form.

REMOTE HAND CONTROL ASSEMBLY



Item No.	Part No.	No. Req'd	Description
1	251044	1	Plastic Cover
2	250248	6	Screw (4-24 x 3/4 Lg.)
3	253414	1	Decal (On-Off)
4	29664	1	Decal (Retract)
5	29663	1	Decal (Advance)
6	251879	21 ft.	Cable (1.5 MM/3 HAR)
7	16772	1	Rocker Switch

Item No.	Part No.	No. Req'd	Description
8	251818	1	Strain Relief Bushing
9	251802	1	Locknut (Torque to 30/35 in. lbs.)
10	420050-4	1	Switch Housing
11	46131	1	Rocker Switch
12	420050-3	1	Switch Mounting Plate
13	420050-2	1	Gasket
14	253607	1	Gasket