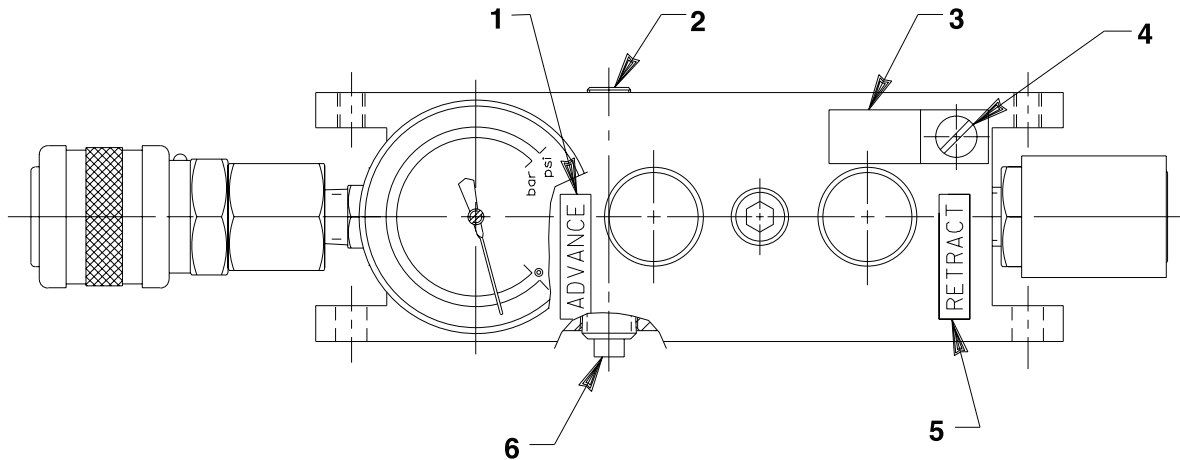
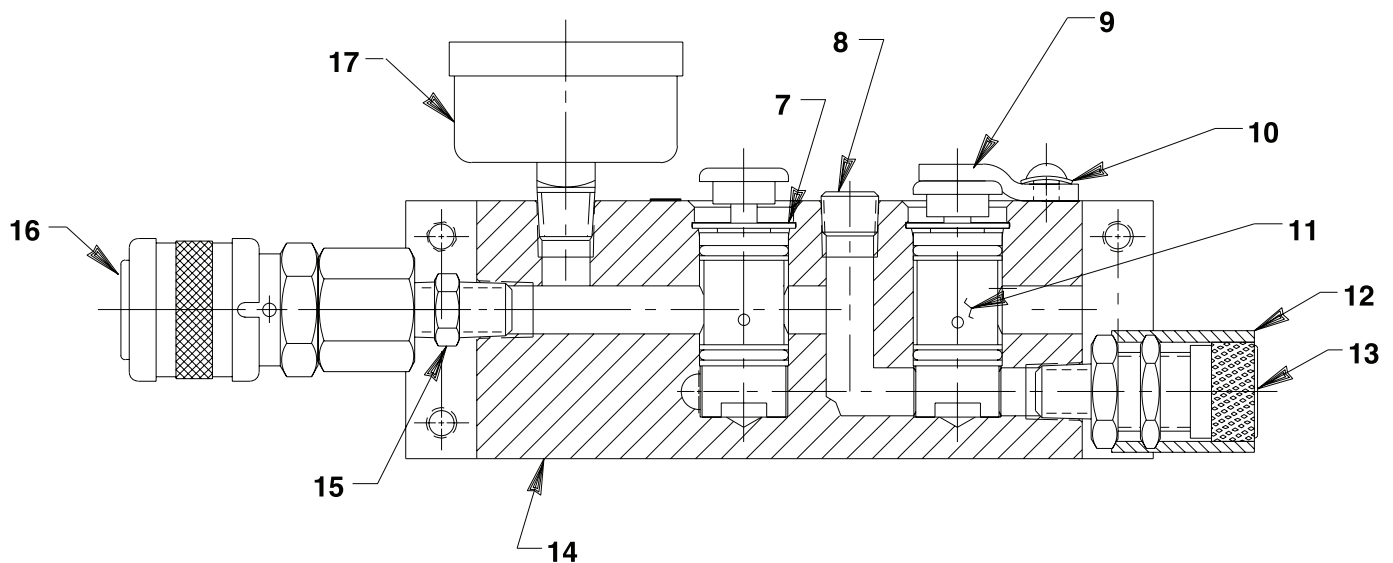


MODEL B
AIR OPERATED HAND CONTROL



(Air inlet
1/8 NPT Female)



Item No.	Part No.	No. Req'd	Description
1	29663	1	Decal (Advance)
2	11084	1	Hex Plug (1/16 NPTF)
3	250647	1	Lever
4	10166	1	Slotted Rnd. Hd. Machine Screw (#10-24 UNC x 1-1/2 Lg.; NOTE: Tighten screw until lever encounters resistance with spring washer and stops turning freely. Do not bottom out screw or crush spring washer. Secure screw with Loctite #277.)
5	29664	1	Decal (Retract)
6	11048	1	Hex Plug (1/8 NPTF)
7	11033	2	Retaining Ring (5/8 bore)
8	10427	1	Hex Plug (1/8 NPTF)
9	206105	2	Pushbutton
10	12187	1	Spring Washer (No. 10)
11	250226	2	2-way Poppet Valve Cartridge (Includes seals)
12	19441	1	Heat Shrink Tube (Heat shrink over item #13)
13	250148	1	Pressure Relief Valve (1/8 NPT; NOTE: Do <u>NOT</u> adjust!)
14	58215	1	Valve Body
15	11421	1	Straight Fitting (1/8 NPTF)
16	250343	1	Quick Coupler (Female)
17	420078	1	Pressure Gauge (160 PSI, 1/8 NPT)

PARTS INCLUDED BUT NOT SHOWN

10270	1	O-ring (5/8 x 7/16 x 3/32, -111)
250291	4	Hex Hd. Cap Screw (#10-24 UNC x 1/2 Lg.)

ASSEMBLY

To assemble hand controls for dual (or mo
Refer to illustration at right.

1. Remove hex plug (11048) from one hand control and hex plug (11084) from another hand control.
2. Place o-ring (10270; shipped loose with hand control) in one of the ports revealed by removing the hex plug.
3. Place hand controls together, aligning the two ports, and secure with the four machine screws provided.

