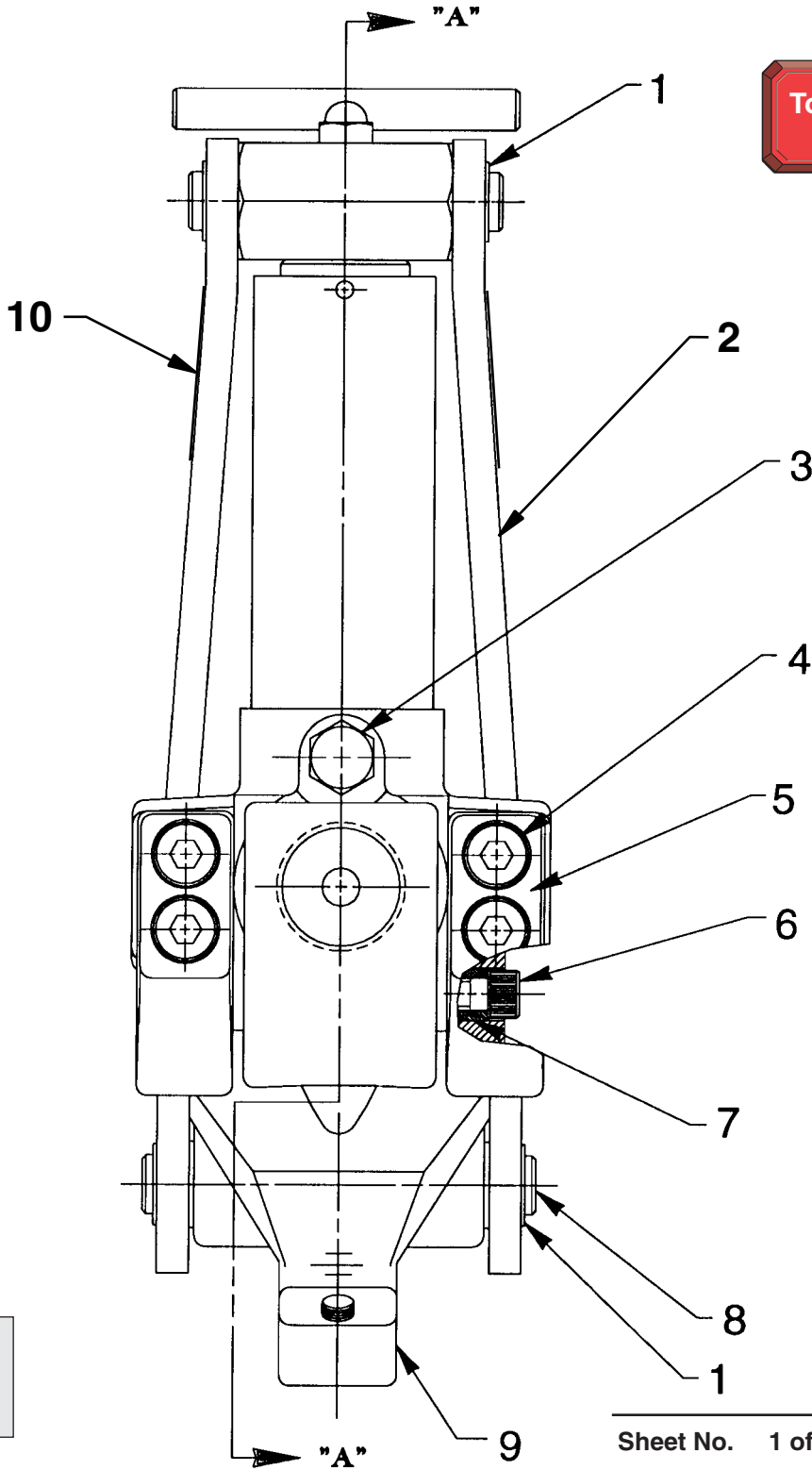


Parts List and Operating Instructions  
for

**BEAD BREAKER ASSEMBLY**  
**2PT0227, 2PT0227-BEIS, & 2PT0227-HJE**



To Parts  
List

Note: Shaded areas  
reflect last revision(s)  
made to this form.

Sheet No. 1 of 3

Rev. 2 Date: 14 Dec. 2000

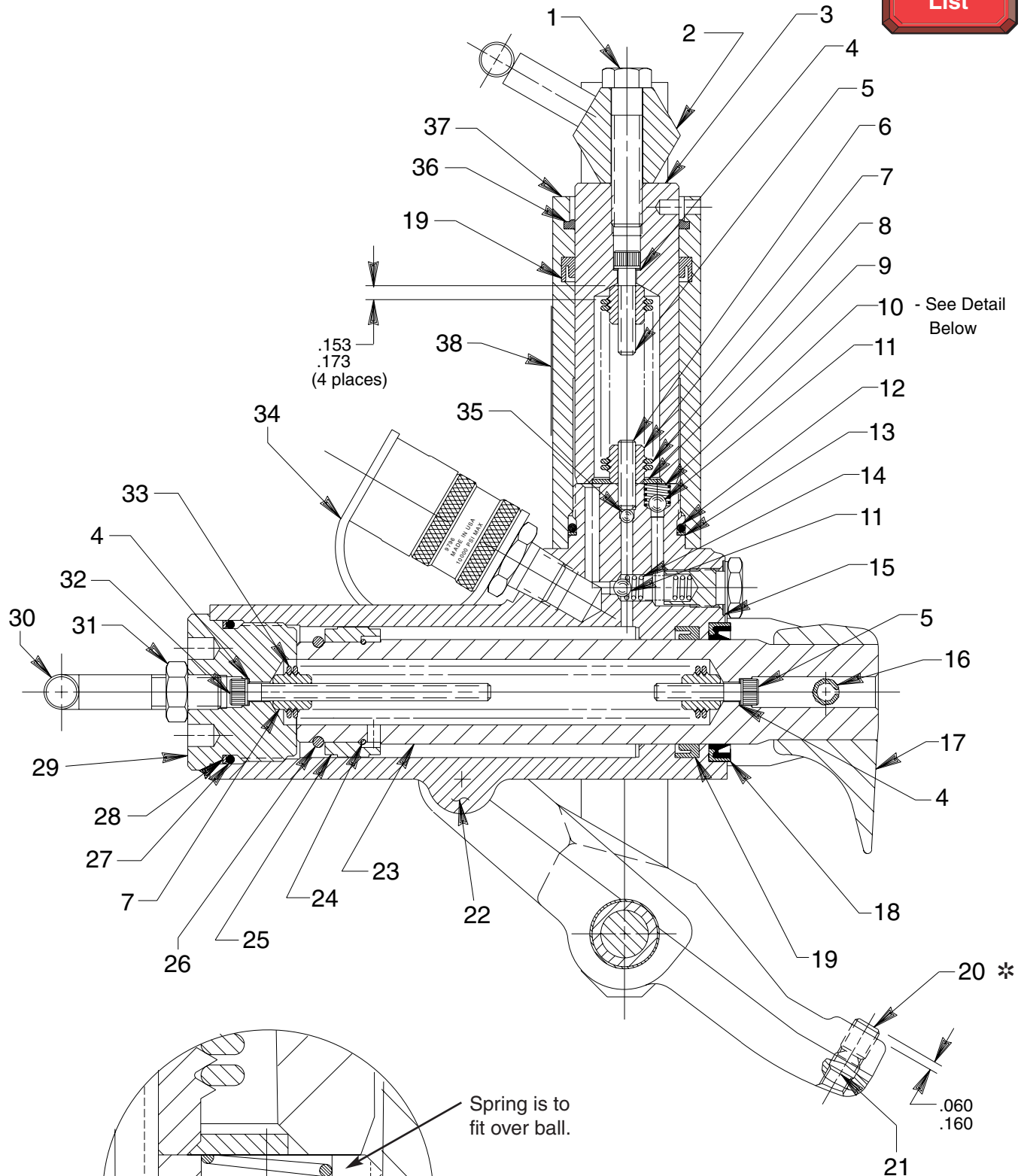
## Parts List and Operating Instructions, Form No. 102824, Back sheet 1 of 3

Item No.	Part No.	No. Req'd	Description
1	11901	4	Retaining Ring ("E", for 5/8 shaft)
2	350270	2	Strap
3	21599	1	Cap Screw (Torque to 25/40 ft. lbs.)
4	10081	4	Soc. Hd. Cap Screw (1/2-13 x 1-1/4 Lg.; Torque to 80/90 ft. lbs.)
5	306135-1	2	Replaceable Tooth
6	10846	2	Soc. Hd. Cap Screw (3/8-16 x 1" Lg.; Use Loctite 242 or equiv. on screws and torque to 35/48 ft. lbs.)
7	204238	2	Spacer
8	205288	1	Pin
9	420438	1	Single Jaw
10	260095	2	Warning Decal

To  
Drawing

Note: Shaded areas reflect last revision(s) made to this form.

## SECTION A-A

To Parts  
List

\* Set screw must be screwed back into hole from this side to protect loc-wel feature.

Sheet No. 2 of 3

Rev. 2 Date: 14 Dec. 2000

Item No.	Part No.	No. Req'd	Description
1	12901	1	Hex. Hd. Cap Screw (7/16-14 x 2" Lg.; Torque to 30/40 ft. lbs.)
2	36949	1	Strap Pivot Handle
3	350455	1	Piston (Single jaw)
4	10442	3	Copper Washer
5	10020	2	Soc. Hd. Cap Screw (1/4-20 x 1-1/4 Lg.; Torque to 90/110 in. lbs.)
6	11116	1	Soc. Hd. Set Screw (1/4-20 x 1" Lg.; Torque to 40/50 in. lbs.; Loctite 222)
7	201360	4	Spring Retainer
8	201430	1	Extension Spring (Lubricate before assembly)
9	17160	1	Special Washer
10	13944	1	Compression Spring (3/8 O.D. X 1/2 Lg.)
11	10375	2	Ball (1/4 dia; Seat at assembly)
12	11841	1	O-ring (1-5/8 x 1-3/8 x 1/8, -220)
13	206751	1	Backup Washer (-220)
14	16724	1	Compression Spring
15	10261	1	Copper Washer
16	10613	1	Roll Pin (3/8 O.D. x 2-1/4 Lg.)
17	36853	1	Claw
18	250918	1	Rod Wiper
19	16721	2	Disogrin U-cup
20	15985	1	Set Screw (3/8-16 x 1/2 Lg.)
21	18627	1	Soc. Hd. Set Screw (3/8-16 x 3/8 Lg.; Used to lock set screw [item #21] in place.)
22	64250	1	Bead Breaker Body
23	420439	1	Ram Piston
24	204237	1	Retaining Ring
25	204236	1	Bearing
26	201433	1	Retaining Ring
27	10294	1	O-ring (2" x 1-3/4 x 1/8, -224)
28	206750	1	Backup Washer (-224)
29	350457	1	End Plug (Torque to 140/225 ft. lbs.)
30	202636	1	Handle
31	10391	1	Hex. Jam Nut (1/2-13)
32	16064	1	Soc. Hd. Cap Screw (1/4-20 x 3-1/2 Lg; Torque to 90/110 in. lbs.)
33	202625	1	Extension Spring (Lubricate before assembly)
34	9796	1	Ram Half Coupler w/ Plastic Dust Cap
35	12223	1	Ball (3/16 dia.)
36	16720	2	Rod Wiper
37	350456	1	Cylinder (Single jaw; Torque to 125/140 ft. lbs.)
38	260000	1	Decal (For 2PT0227-BEIS)



Note: Shaded areas reflect last revision(s) made to this form.

## GENERAL INFORMATION

**Definition:** To break loose the bead or inner portion of a tire from its rim or counterpart.

**Follow the tire manufacturer's instructions and the vehicle manufacturer's instructions to deflate, demount, mount, and inflate tires. The following general procedure does not apply to any specific rim, therefore, contact the manufacturer for the correct procedure.**

- Carefully inspect the unit upon arrival. The carrier, not the manufacturer, is responsible for any damage resulting from shipment.
- These instructions should be read and carefully followed. Most problems with new equipment are caused by improper operation or installation.

## SAFETY EXPLANATIONS

Two safety symbols are used to identify any action or lack of action that can cause personal injury. Your reading and understanding of these safety symbols is very important.



**DANGER** - Danger is used only when your action or lack of action will cause serious human injury or death.



**WARNING** - Warning is used to describe any action or lack of action where a serious injury can occur.

**IMPORTANT** - Important is used when action or lack of action can cause equipment failure, either immediate or over a long period of time.

## SAFETY PRECAUTIONS



### DANGER:

- Stand to one side when applying hydraulic pressure. The Bead Breaker creates an extremely high force; if the Bead Breaker slips off the flange, it could cause serious injury or death.
- Never operate this tool at full pressure (700 bar) unless the clamp is securely in position on the rim.
- Replace damaged or worn parts.



### WARNING: It is the operator's responsibility to read and understand the following safety statements,

- Only qualified operators should install, operate, adjust, maintain, clean, repair, or transport this tool.
- Do NOT use the Bead Breaker without reading and understanding the following safety precautions and operating instructions.
- Wear safety glasses at all times.
- Only trained professional technicians who are familiar with this type of equipment and its correct usage should use the Bead Breaker.

### IMPORTANT:

- Keep hydraulic coupler and adapter free of any dirt or water.
- Use only Power Team hydraulic fluid. Never use brake fluid or transmission oil.

## OPERATING INSTRUCTIONS

1. Follow the manufacturer's instructions to deflate the tire.
2. Connect the hydraulic pump to the tool.
3. Position the tool so that the cup point set screw in the jaw makes solid contact with the rim and the claw is positioned in the crevice between the bead of the tire and the rim.
4. Activate the hydraulic pump and advance the clamping arm until it contacts the inside of the rim, clamping the tool to the rim. This will force the wedges between the tire and the rim.
5. Remove hands from the tool and stand to one side before proceeding.
6. Continue pumping until the tool pushes the bead free of the rim.  
**NOTE: If, at any time, this operation appears to be unstable or the tool isn't aligned perpendicular to the rim, release the tool and start over.**
7. Release the pressure and move the tool to different locations and repeat the above steps until the bead is completely free of the rim.
8. Unseat the back bead using the same procedure and remove rim components, as specified, by the rim manufacturer.

Note: Shaded areas reflect last revision(s) made to this form.