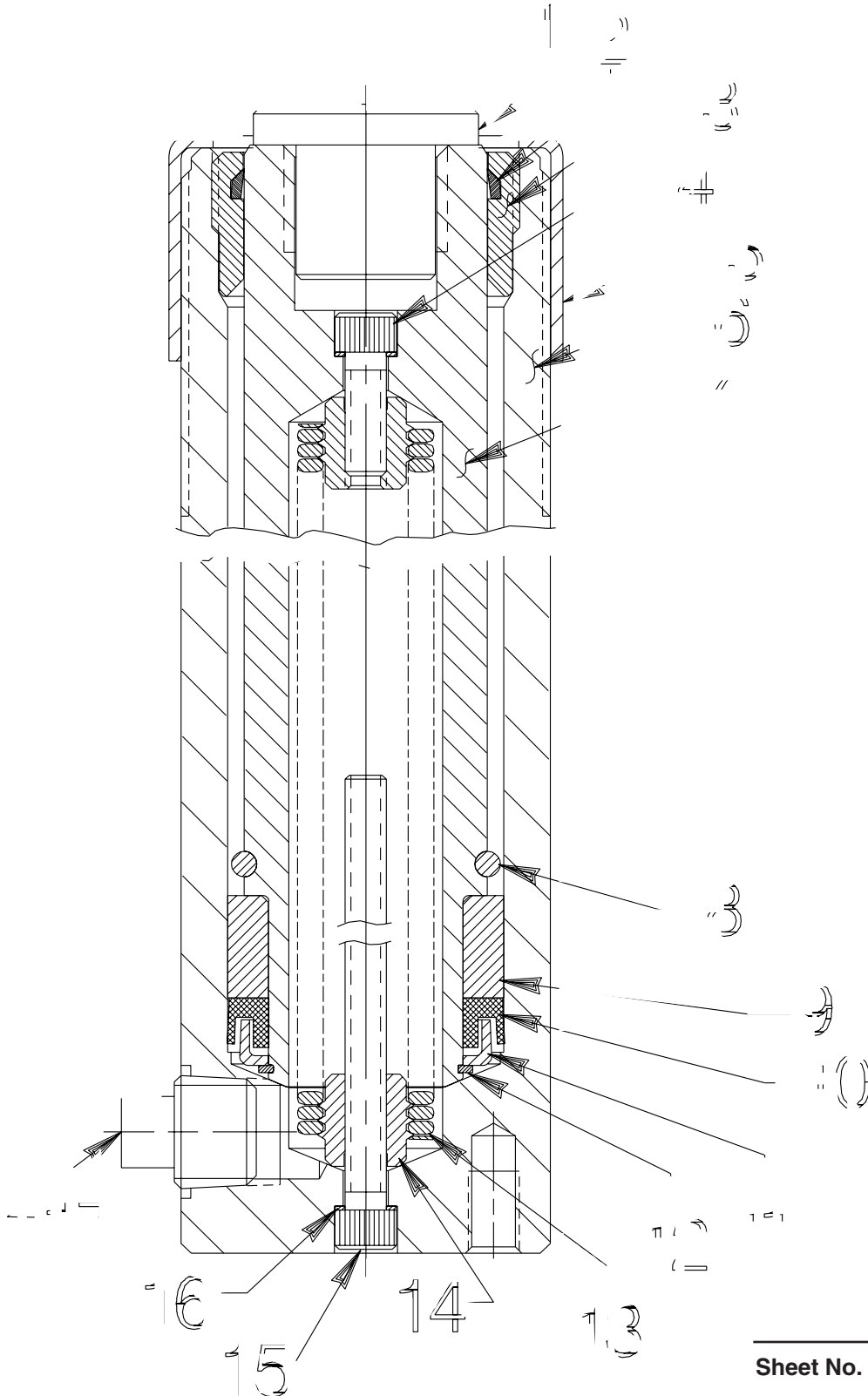


Parts List for  
**BP496**  
SINGLE-ACTING, SPRING RETURN  
**HYDRAULIC CYLINDER**  
Max. Capacity: 11.2 Tons at 10,000 PSI



Sheet No. 1 of 1

Issue Date: Rev. 5-30-95

Item No.	Part No.	No. Req'd	Description
1	201362	1	Thread Adapter
2	†*201429	1	Special Wiper
3	201366	1	Retainer Nut (Torque to 90/100 in. lbs.)
4	10006	1	Cap Screw (1/4-20 UNC X 5/8 Lg.; Torque to 90/110 in. lbs.)
5	36146	1	Thread Protector
6	420810	1	Cylinder Body
7	420809	1	Piston Rod
8	201433	1	Ring
9	201364	1	Piston Head (Assemble with groove toward shoulder.)
10	*16067	1	U-cup
	†205704	1	U-cup
11	201359	1	Slip Retainer
12	*16076	1	Retaining Ring
13	201432	1	Spring (See detail below)
14	201360	2	Spring Retainer (See detail below)
15	16064	1	Cap Screw (1/4-20 UNC x 3-1/2 Lg.; Torque to 90/110 in. lbs.)
16	†*10442	2	Copper Washer (3/8 X 1/4 X 1/32)
17	11127	1	Plug

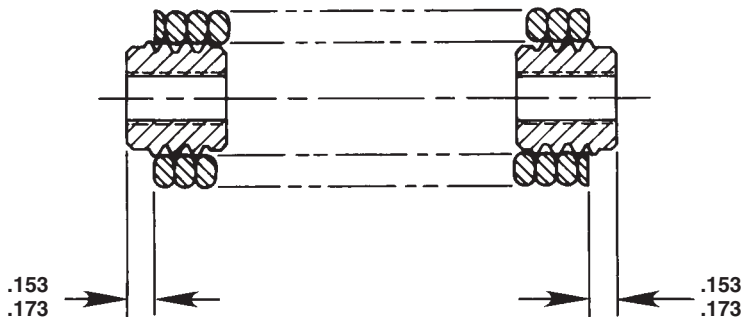
**PARTS INCLUDED BUT NOT SHOWN**

*203908	1	Warning Decal
†206554	1	U-cup Backup Washer (-23)
†19526	1	O-ring (1" x 3/4 x 1/8, -210; For coupler)
†205724	1	Decal (Viton seals)

Part numbers marked with an asterisk (\*) are contained in Repair Kit No. 300116.  
 Part numbers marked with a dagger (†) are contained in Viton Seal Kit No. 300211.

**SPRING & RETAINER ASSEMBLY**

The spring must not extend beyond the threads of the spring retainer on either end. Stretch, clean and lubricate the spring before assembly.



Note: Shaded areas reflect last revision(s) made to this form.