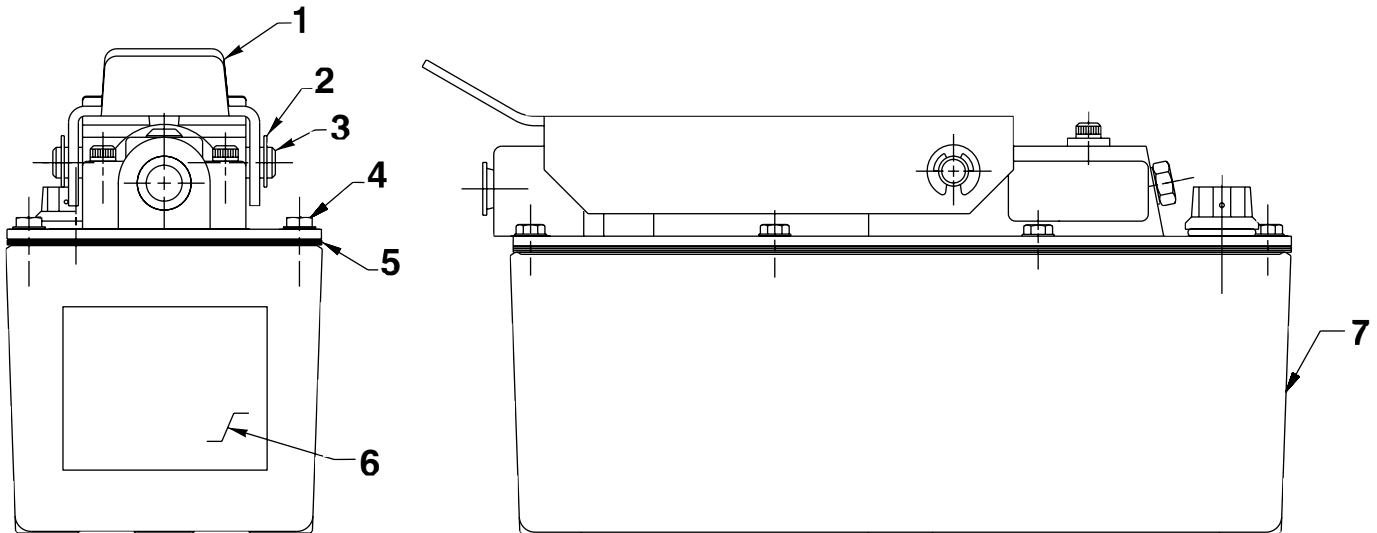


MODEL F
AIR/HYDRAULIC PUMP
Maximum Capacity: 3,500 PSI



Item No.	Part No.	No. Req'd	Description
1	47696BK2	1	Hand Pedal
2	*11032	2	External Retaining Ring (For 3/8 shaft)
3	215709	1	Pin
4	215952	8	Hex Head Washer Screw (10-24 X 5/8 Lg.; Torque to 25/35 in. lbs., oiled)
5	*47675	1	Reservoir Gasket
6	305494	1	Instruction Decal (Oil lube)
7	62007	1	Reservoir
PARTS INCLUDED BUT NOT SHOWN			
	215951	2	Hex Head Washer Tapping Screw (1/4-20 X 3/4 Lg.; For pump mounting purposes only.)

Part numbers marked with an asterisk (*) are contained in Repair Kit No. 300862.

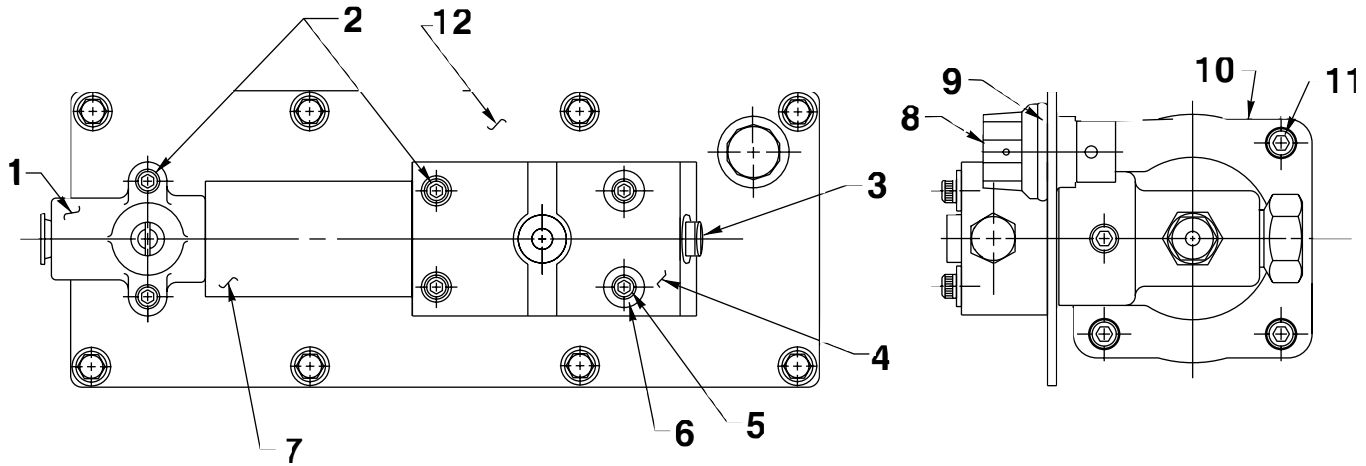
Note: Removed part no. 251677 from this form.

Note: Shaded areas reflect last revision(s) made to this form.

Sheet No. 1 of 3

Rev. 1 Date: 30 May 1997

TOP AND END VIEWS



Item No.	Part No.	No. Req'd	Description
1	37199	1	Air Intake Valve Body
2	11151	4	Socket Head Screw (10-24 X 1-1/4" Lg.; Torque to 50/60 in. lbs.)
3	17147	1	Plug Fitting (3/8 NPTF)
4	59051	1	Release Valve Body
5	11435	2	Socket Head Screw (10-24 X 1-3/4" Lg.; Torque to 50/60 in. lbs.)
6	11089	2	Flat Washer (#10 bolt)
7	*29992	1	Foam Tube
8	251689	1	Filler/Breather Cap
9	*10273	1	O-ring (13/16 X 5/8 X 3/32)
10	64767	1	Pump Body
11	17428	4	Socket Head Screw (1/4-20 X 3-1/2" Lg.; Torque to 85/95 in. lbs. oiled; Note: Cross torque in increments of 30 in. lbs.)
12	421164BK2	1	Cover Plate

Part numbers marked with an asterisk (*) are contained in Repair Kit No. 300862.

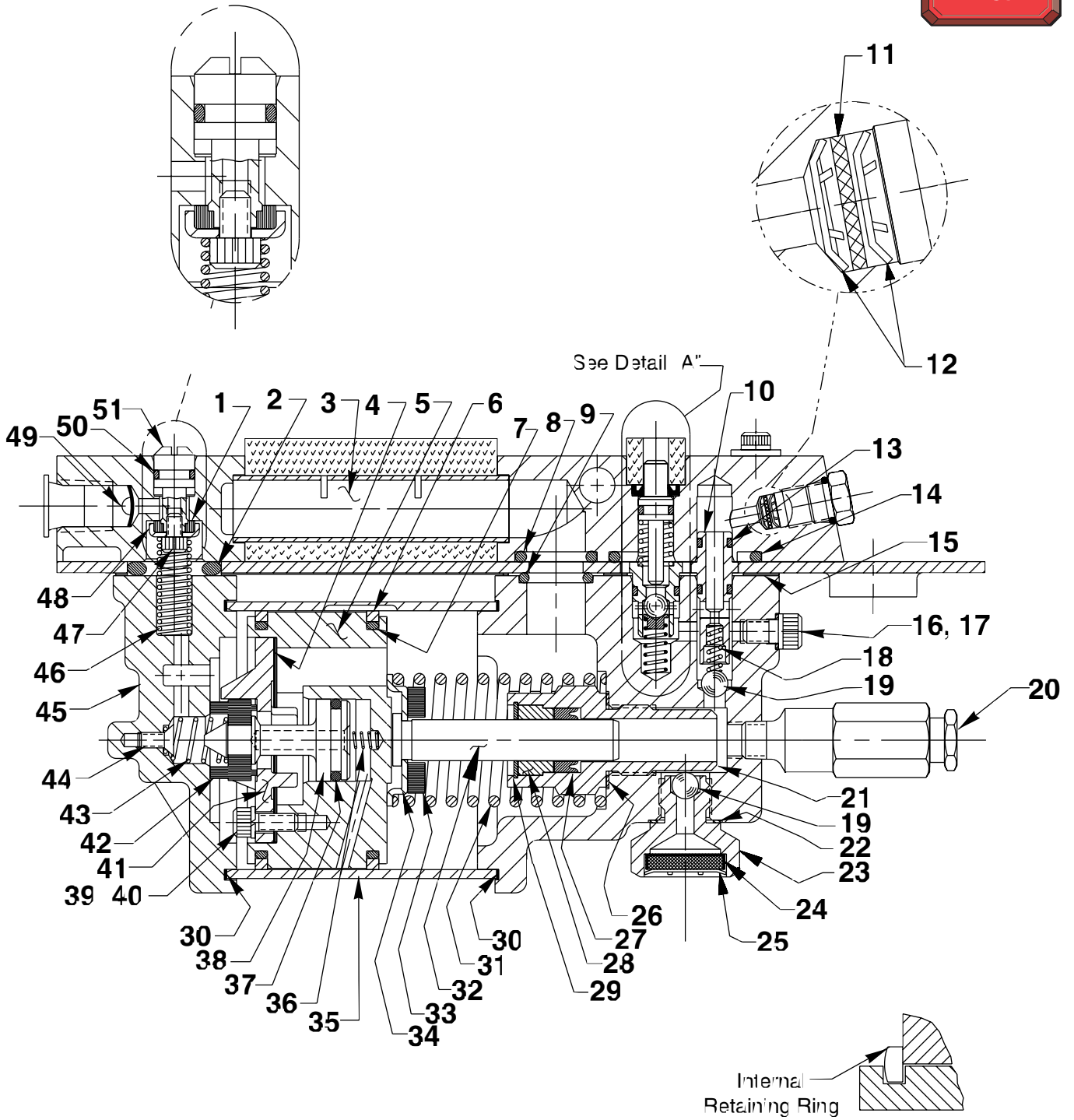
Refer to any operating instructions included with this product for detailed information about operation, testing, disassembly, reassembly, and preventive maintenance.

Items found in this parts list have been carefully tested and selected. **Therefore: Use only genuine Power Team replacement parts!**

Additional questions can be directed to our Technical Services Department.

Note: Shaded areas reflect last revision(s) made to this form.

BASIC ASSEMBLY



DETAIL "B"

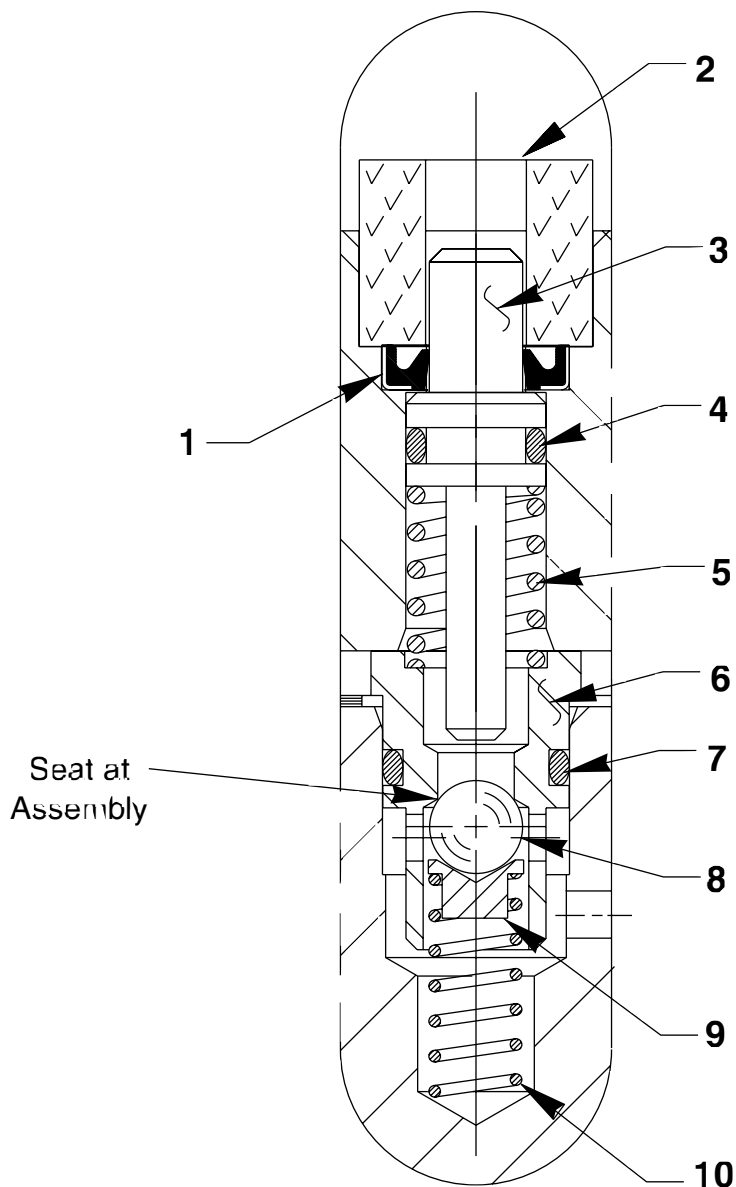
Parts List, Form No. 107353, Back sheet 2 of 3

Item No.	Part No.	No. Req'd	Description	Item No.	Part No.	No. Req'd	Description
1	*28182	1	Air Valve Poppet	30	*17429	2	Backup Washer (2-15/16" X 2-3/4" X .045)
2	*251717	1	O-ring (1" X 5/8 X 3/16)	31	*13938	1	Compression Spring (1.452 O.D. X 4-7/16" Lg.)
3	*28387	1	Muffler	32	28400	1	Piston (7/16)
4	*28239	1	Gasket	33	202613	1	Bumper
5	52390	1	Piston Body	34	211082	1	Spring Guide
6	*14265	2	Piston Ring	35	351122	1	Air Cylinder (Note: Locate groove on upper half (top) of pump with chamfered tube end towards rear head as shown.)
7	*251835	2	O-ring (2-5/16" X 2-1/8" X 3/32)	36	*12692	1	Compression Spring (3/16 O.D. X 1-11/16" Lg.)
8	*10276	1	O-ring (1" X 3/4 X 1/8)	37	*211052	1	O-ring (.900 X .706 X .097)
9	*10272	1	O-ring (3/4 X 9/16 X 3/32)	38	305475	1	Exhaust Valve Stem
10	34378	1	Check Valve Body	39	*10241	3	Lockwasher (For #10 bolt)
11	*214596	1	Oil Filter Disc	40	211054	3	Socket Head Screw (10-24 X 1/2 Lg.; Torque to 50/55 in. lbs.)
12	*12201	2	Internal Retaining Ring	41	33822	1	Piston End Plate Casting
13	*12522	2	O-ring (3/8 X 1/4 X 1/16)	42	*28183	1	Piston Poppet
14	*11841	1	O-ring (1-5/8" X 1-3/8" X 1/8)	43	*205679	1	Compression Spring (.485 O.D. X .915 Lg.)
15	*351021	1	Cover Plate Gasket	44	*205674	1	Flat Head Screw (8-32 X 3/8 Lg.; Torque to 12/18 in. lbs.)
16	*10442	1	Copper Washer (3/8 X 1/4 X 1/32)	45	51480	1	Rear Head
17	10002	1	Socket Head Screw (1/4-20 X 3/8 Lg.; Torque to 90/110 in. lbs.)	46	12691	1	Compression Spring (3/8 O.D. X 1-1/2" Lg.)
18	*10445	1	Compression Spring (5/32 O.D. X 3/4 Lg.)	47	13936	1	Socket Head Screw (8-32 X 1/4 Lg.)
19	*10423	2	Steel Ball (9/32 Dia.)	48	28198	1	Seal Guide
20	21278-35	1	Relief Valve (Set at 3,500/3,800 PSI)	49	*216296	1	Filter Disc
21	33959	1	Blank Cylinder (Torque to 90/100 ft. lbs. oiled.)	50	10267	1	O-ring (7/16 X 5/16 X 1/16)
22	*10261	1	Copper Washer (3/8 X 19/32 X 1/32)	51	33841	1	Actuator Button
23	421539	1	Filter Adapter (Torque to 40/50 ft. lbs. oiled)				
24	214578	1	Filter				
25	214586	1	Internal Retaining Ring				
26	*10263	1	Special Washer				
27	*14121	1	U-cup				
28	*202624	1	Retainer				
29	*11034	1	Internal Retaining Ring (Note: Install with sharp edge toward the retainer part. See Detail "B".)				

Part numbers marked with an asterisk (*) are contained in Repair Kit No. 300862.



DETAIL A



Item No.	Part No.	No. Req'd	Description
1	*15620	1	Oil Shaft Seal
2	*206504	1	Foam Tube
3	29365	1	Release Valve Button
4	*10266	1	O-ring (3/8 X 1/4 X 1/16)
5	*251297	1	Compression Spring (3/8 O.D. X 1/2 Lg.)
6	34377	1	Poppet Retainer
7	*15279	1	O-ring (1/2 X 3/8 X 1/16)
8	*10375	1	Steel Ball (1/4 Dia.)
9	25685	1	Ball Retainer
10	*14624	1	Compression Spring (1/4 O.D. X 3/4 Lg.)

Part numbers marked with an asterisk (*) are contained in Repair Kit No. 300862.