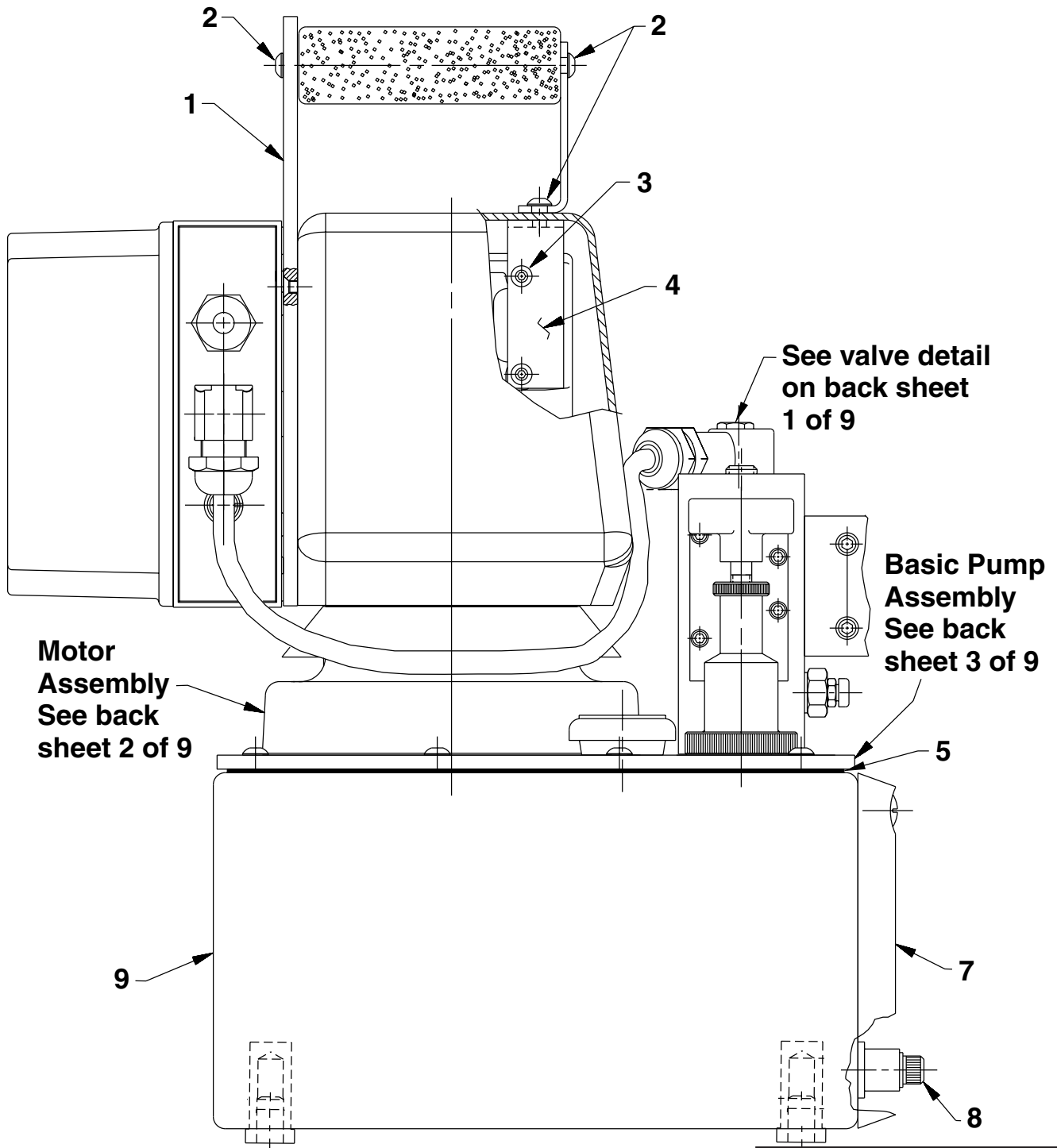
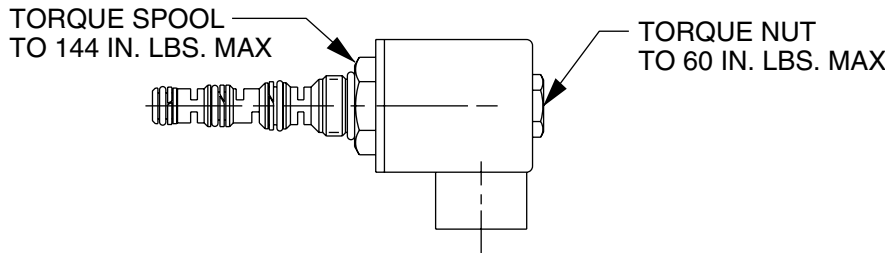


### MODEL A ELECTRIC HYDRAULIC PUMP Maximum Capacity: 10,000 PSI

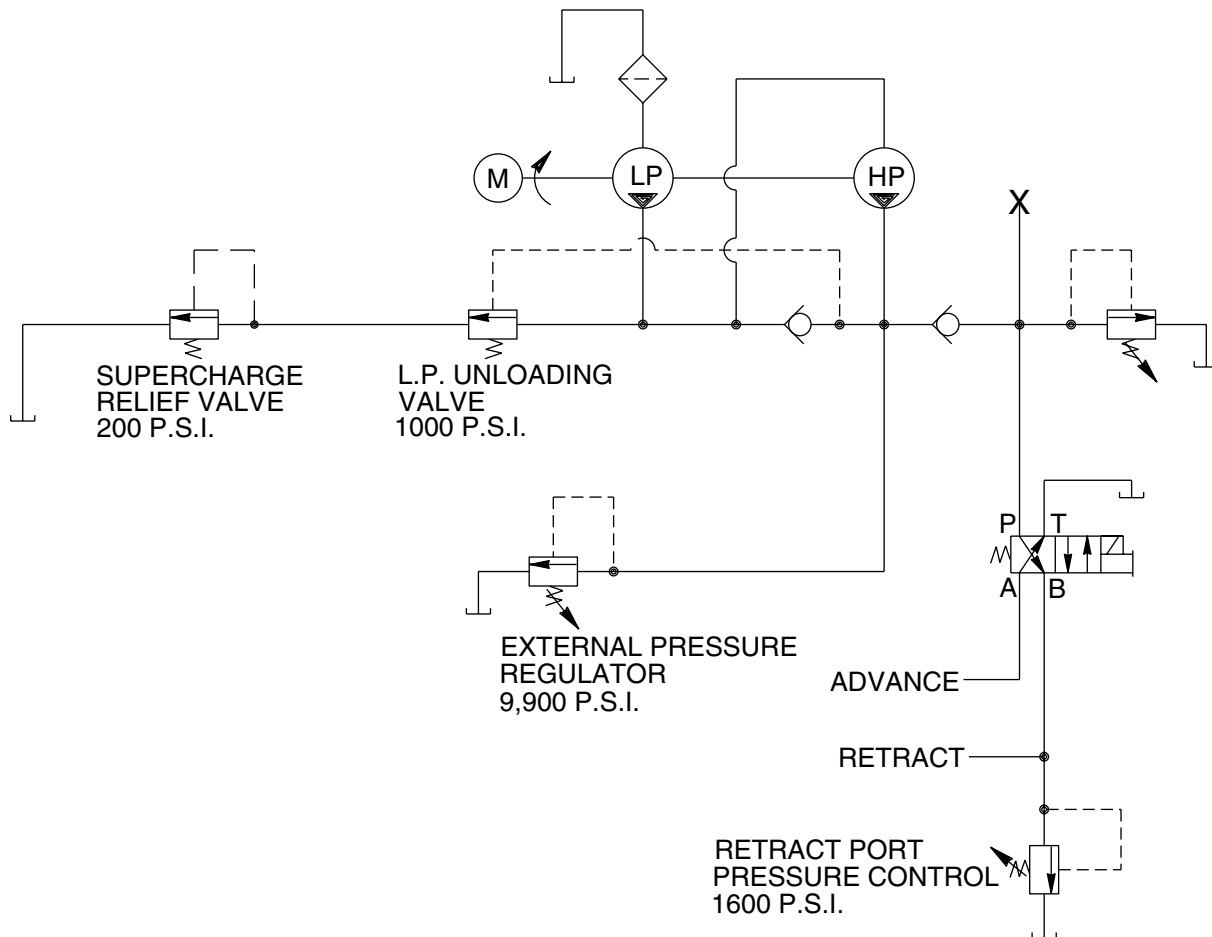


Item No.	Part No.	No. Req'd	Description
1	59028BK2	1	Mounting Bracket
2	251437	4	Screw (1/4-20 x 1/2 Lg.)
3	251486	4	Cap Screw (#10-24 UNC-2B x 1/2 Lg.)
4	421212	1	Bracket
5	40164	1	Reservoir Gasket
6	350431	1	Oil Level w/ Thermometer Gauge
7	10412	1	Screw (3/8-16 x 1/2 Lg.)
8	19779	1	Seal Washer
9	64364BK2	1	Reservoir (2 gallon)

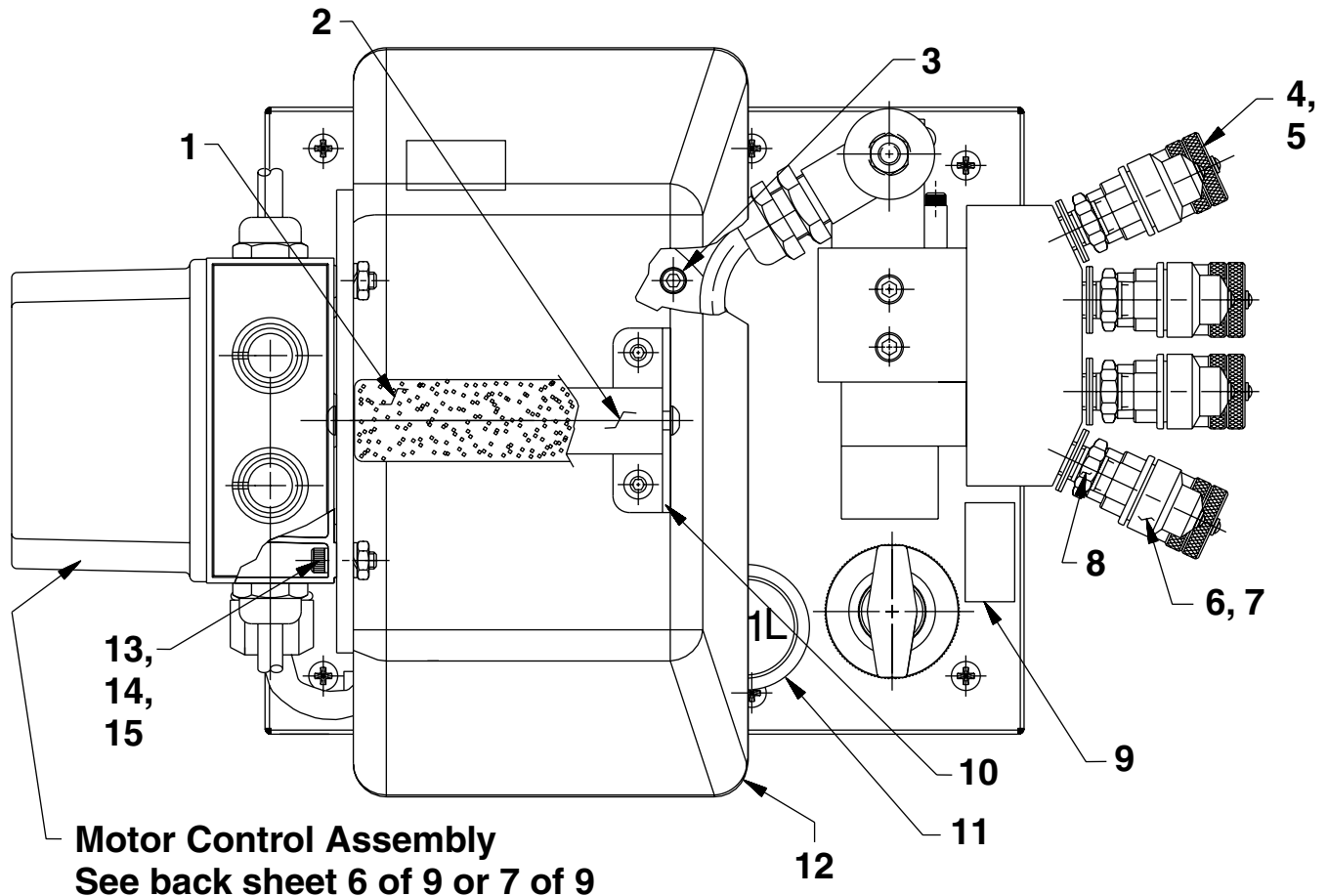
### VALVE DETAIL



### HYDRAULIC SCHEMATIC



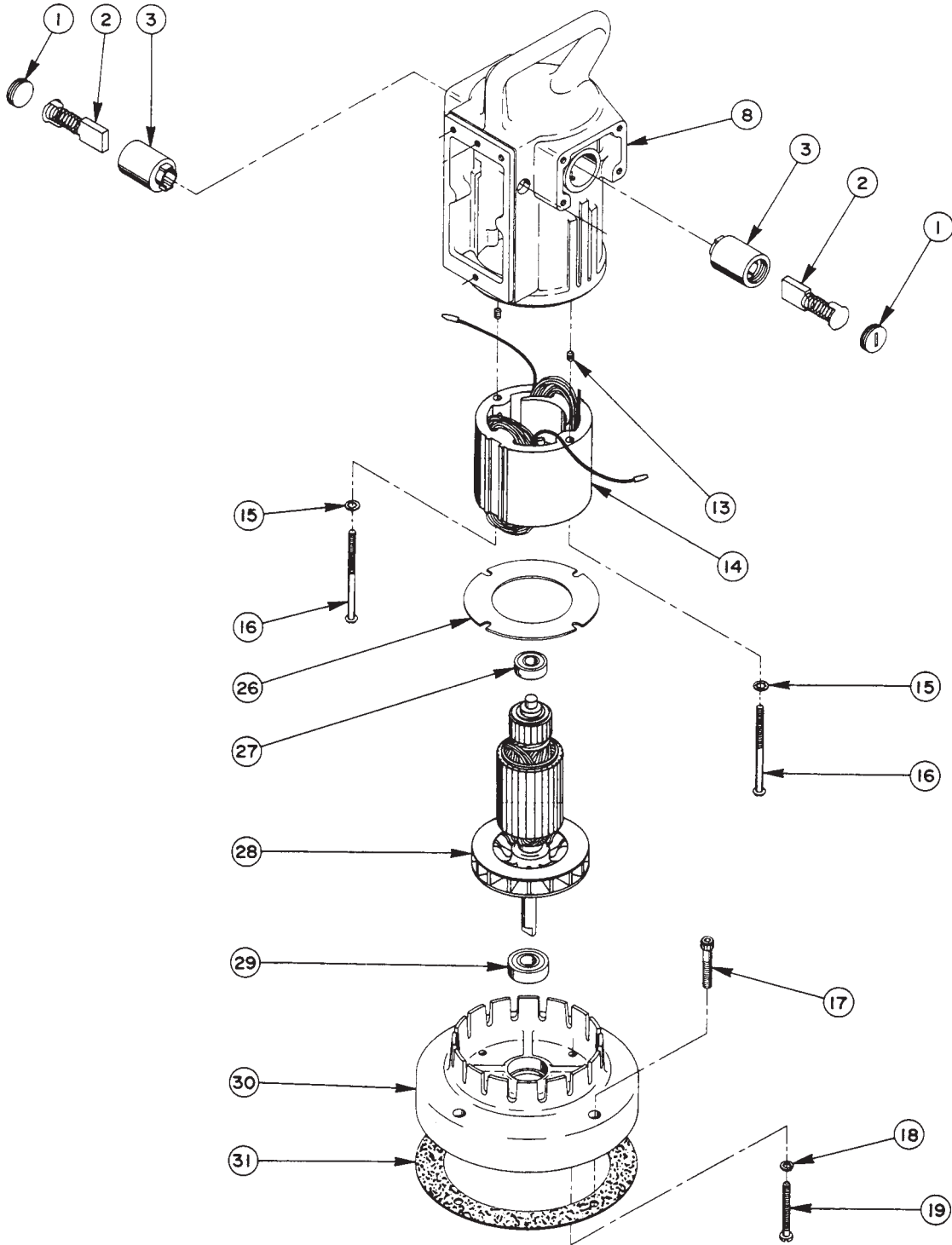
### BASIC PUMP ASSEMBLY- TOP VIEW



Item No.	Part No.	No. Req'd	Description
1	216668	1	Handle Grip
2	252020	1	Handle
3	10022	4	Screw (1/4-20 x 1-1/2 Lg.)
4	251410	4	Quick Coupler
5	252364	4	Dust Plug
6	251411	4	Quick Coupler Plug
7	252365	4	Dust Cap
8	10672	4	Straight Fitting
9	252047	1	Instruction Decal (Locate near pressure regulator.)
10	351189BK2	1	Handle Bracket
11	350925	1	Filler Breather Cap
12	65758	1	Cover
13	10008	4	Screw (1/4-20 x 3/4 Lg.)
14	10245	4	Lockwasher
15	10199	4	Hex Nut (1/4-20)

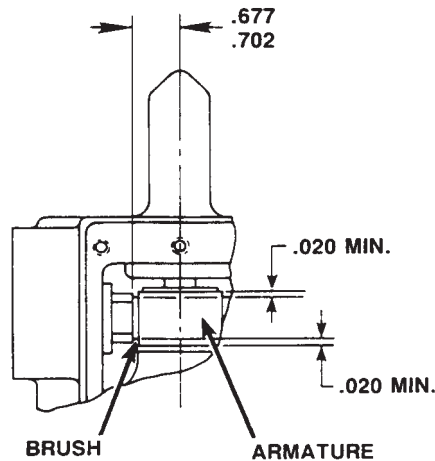
# UNIVERSAL MOTOR ASSEMBLY

12,000 RPM - 220/230 V., 50/60 Hz.



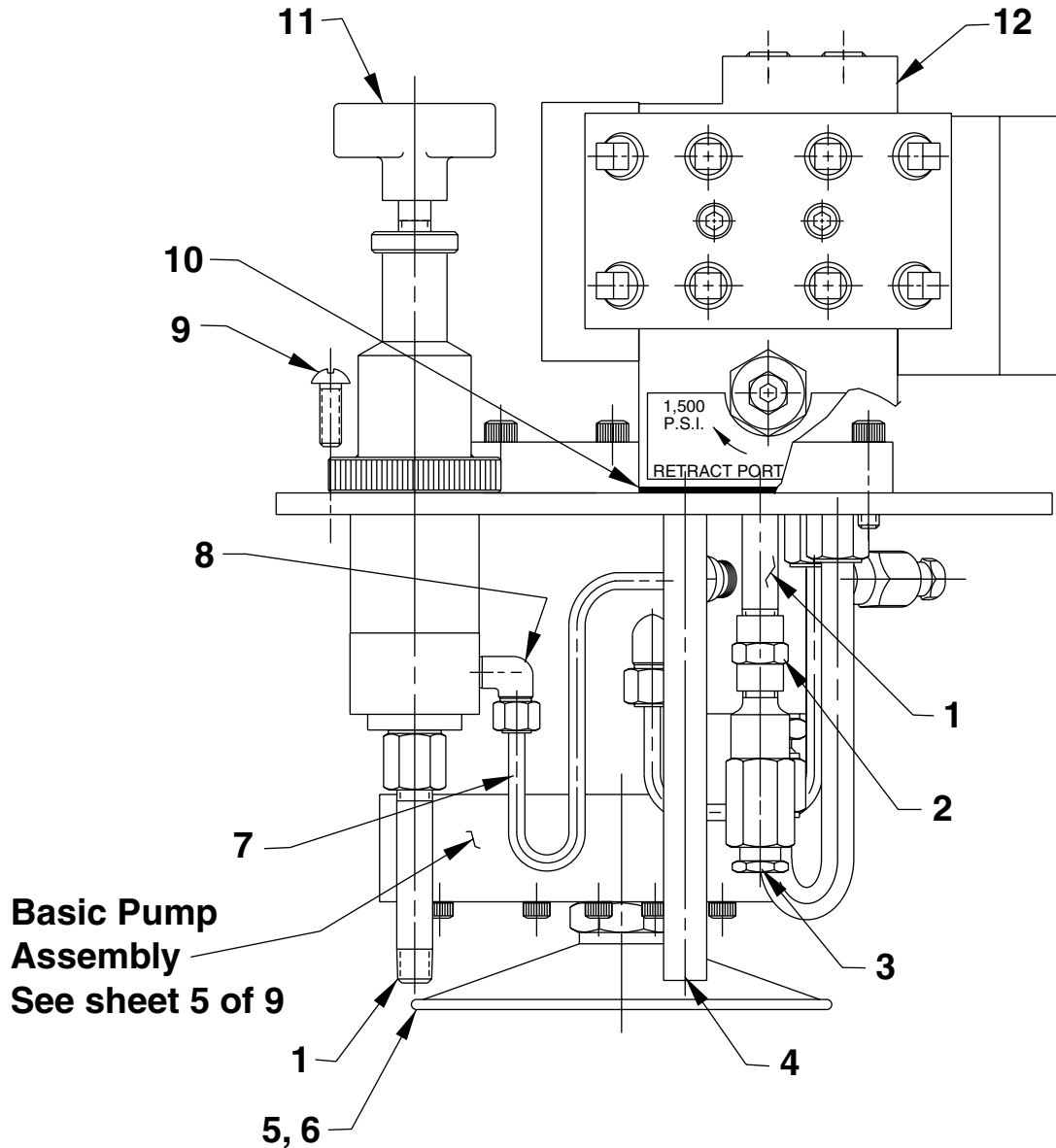
Item No.	Part No.	No. Req'd	Description
1	10806	2	Brush Holder Cap
2	10804	2	Brush Assembly
3	10805	2	Brush Holder
8	50160	1	Motor Shell
13	10133	2	Set Screw (#10-24 UNC x 1/4 Lg.)
14	10803	1	Field (115 V.; For SST-UK110)
	58841F	1	Field (230 V.; For SST-E220)
15	12356	2	Lockwasher
16	10170	2	Rd. Hd. Machine Screw (#10-24 UNC x 3-1/4 Lg.)
17	10022	4	Soc. Hd. Cap Screw (1/4-20 UNC x 1-1/2 Lg.)
18	10241	4	Lockwasher (#10 bolt)
19	10169	4	Pan Hd. Machine Screw (#10-24 UNC x 2" Lg.; Torque to 20/25 in. lbs.)
26	20786	1	Baffle Plate
27	10438	1	Ball Bearing
28	10801	1	Armature (115 V. ; For SST-UK110)
	58841A	1	Armature (230 V.; For SST-E220)
29	10439	1	Ball Bearing
30	40059	1	Motor Base
31	30650	1	Gasket

## BRUSH HOLDER & ARMATURE INSTALLATION SPECIFICATIONS



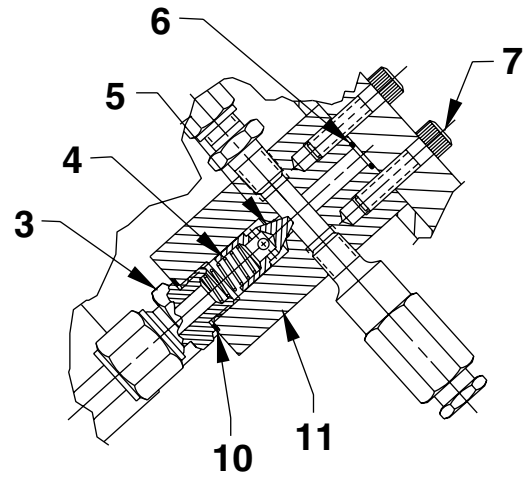
When replacing brushes or the armature, the dimensions shown must be specified.

### BASIC PUMP ASSEMBLY- SIDE VIEW

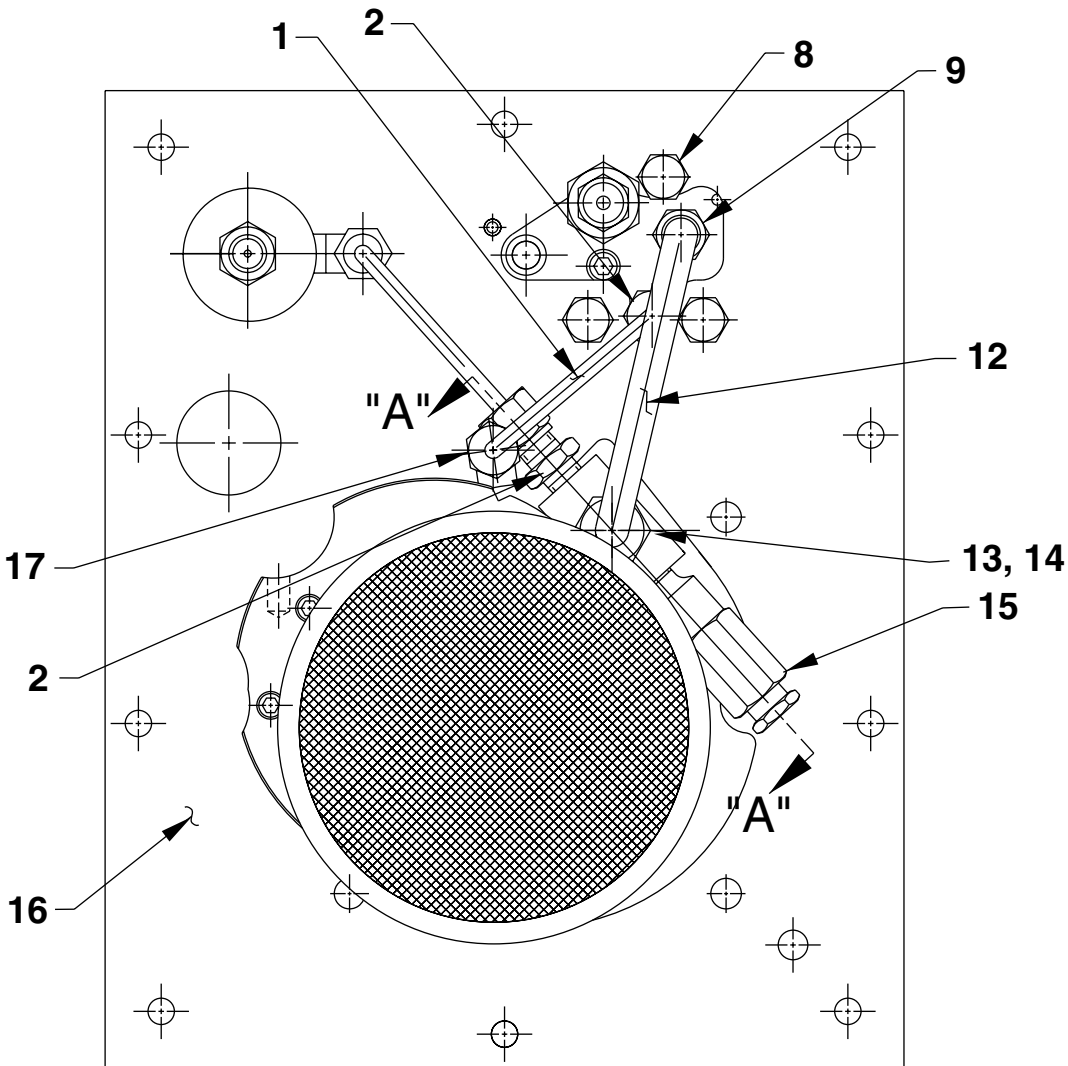


Item No.	Part No.	No. Req'd	Description
1	15456	2	Straight Fitting
2	18841	1	Straight Fitting
3	21278-15	1	Relief Valve Assembly (Set at 1500/1700 PSI)
4	200609	1	Drain Tube
5	21344	1	Filter Screen
6	10300	1	O-ring (5/8 X 15/32 X 5/64)
7	252056	1	Pressure Regulator Tube
8	16177	1	90° Elbow Fitting
9	10177	10	Screw (1/4-20 x 3/4 Lg.)
10	351095	1	Valve Gasket
11	252271	1	Pressure Regulator Assembly (See Form No. 105550)
12	3000113CL	1	Valve Assembly (See Form No. 105501)

**BASIC PUMP ASSEMBLY  
BOTTOM VIEW & SECTION A-A**



SECTION "A-A"



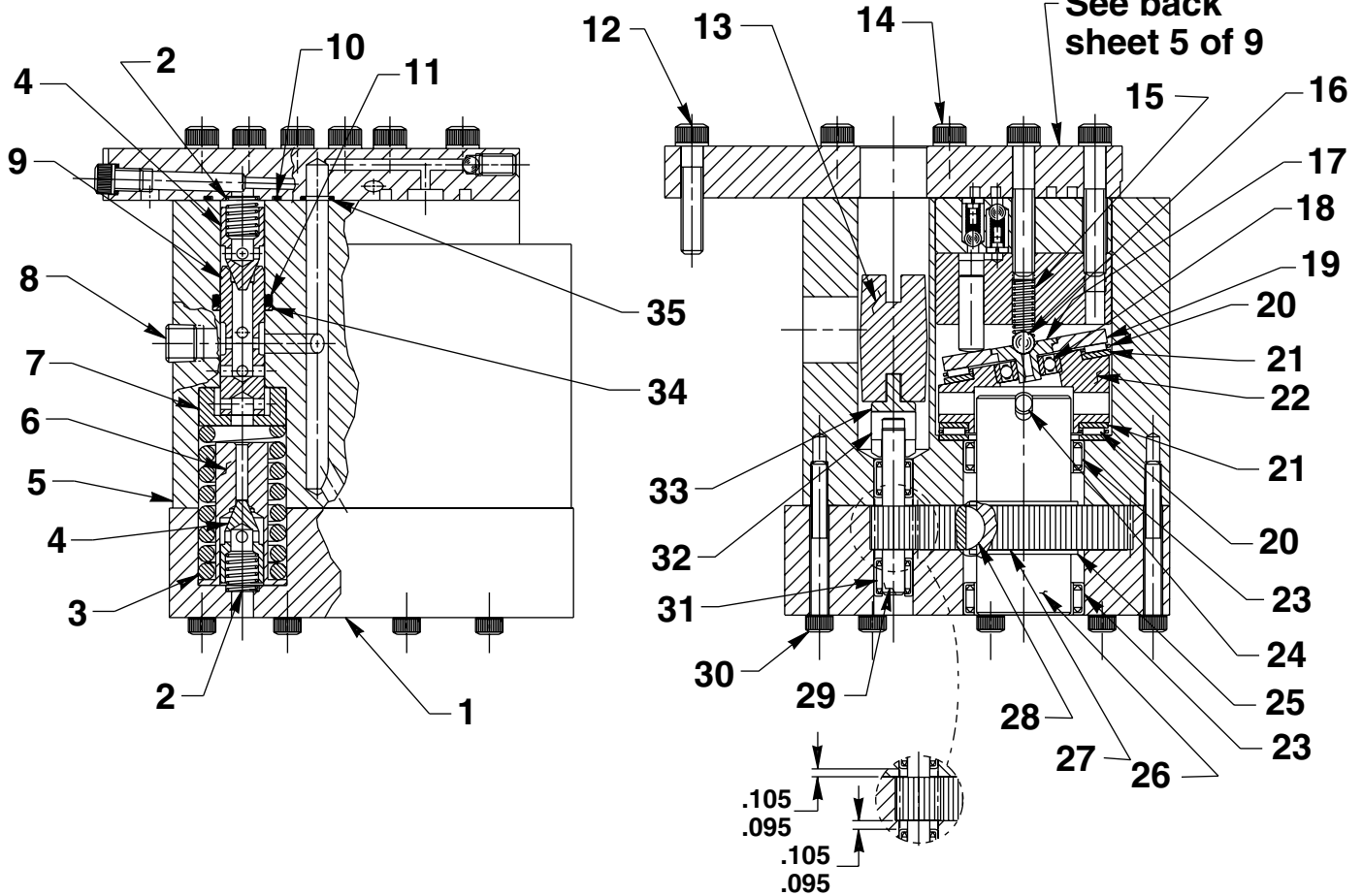
# Parts List, Form No. 107377, Back sheet 4 of 9

---

<b>Item No.</b>	<b>Part No.</b>	<b>No. Req'd</b>	<b>Description</b>
1	<b>252055</b>	1	Pressure Regulator Tube
2	<b>14844</b>	2	Straight Fitting
3	<b>20770</b>	1	Connector Fitting
4	<b>10425</b>	1	Compression Spring (3/8 O.D. X 3/4 Lg.)
5	<b>20771</b>	1	Poppet
6	<b>10266</b>	1	O-ring (3/8 X 1/4 X 1/16)
7	<b>10015</b>	2	Screw (1/4-28 UNF X 1" Lg.; Torque to 130/180 in. lbs.)
8	<b>12825</b>	3	Screw (1/4-20 x 5/8 Lg.)
9	<b>10661</b>	1	Straight Fitting
10	<b>10261</b>	1	Copper Washer (3/4 X 19/32 X 1/32)
11	<b>20776</b>	1	Valve Body
12	<b>351203</b>	1	Oil Line Tube
13	<b>10430</b>	1	Tube Sleeve
14	<b>10431</b>	1	Nut Tube Fitting
15	<b>21278</b>	1	Relief Valve Assembly (Set at 10,100/10,700 PSI)
16	<b>65043GY8</b>	1	Cover Plate
17	<b>16177</b>	1	90° Elbow Fitting

**BASIC PUMP ASSEMBLY**

**High Pressure  
Pump Ass'y  
See back  
sheet 5 of 9**

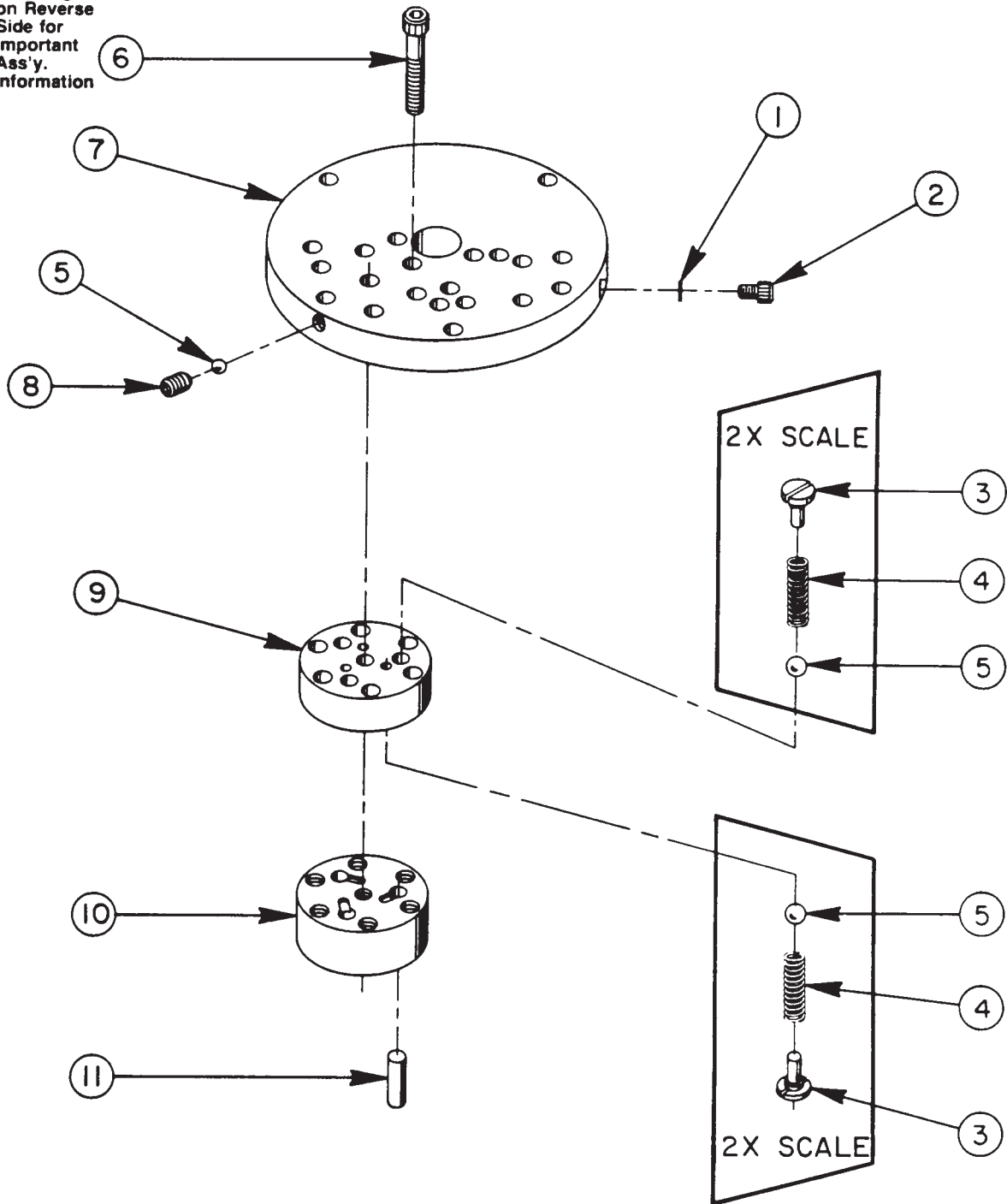


Item No.	Part No.	No. Req'd	Description
1	40072	1	End Plate
2	10425	2	Compression Spring (3/8 O.D. X 3/4 Lg.)
3	10426	1	Compression Spring (1" O.D. X 1-13/16" Lg.)
4	20771	2	Poppet
5	40071	1	Body
6	23256	1	Spring Guide
7	23255	1	Spring Guide
8	10427	1	Pressure Plug (1/8 NPTF)
9	20849	1	Spool
10	10303	1	O-ring (7/8 X 3/4 X 1/16)
11	10271	1	O-ring (11/16 X 1/2 X 3/32)
12	10016	3	Cap Screw (1/4-20 UNC X 1" Lg.)
13	21091	1	Coupling
14	10020	9	Cap Screw (1/4-20 UNC X 1-1/4 Lg.; Torque to 170/180 in. lbs.)
15	10361	1	Compression Spring (1/4 O.D. X 1" Lg.)
16	10375	1	Steel Ball (1/4 Dia.)
17	23547	1	Bearing Top Plate

Item No.	Part No.	No. Req'd	Description
18	11814	1	Ball Bearing
19	23548	1	Top Plate
20	11228	2	Thrust Bearing
21	11813	3	Bearing Race
22	23549	1	Angle Plate
23	11064	2	Needle Bearing
24	11955	1	Pin
25	11261	2	Retaining Ring
26	23556	1	Shaft
27	23574	1	Gear
28	11821	1	Woodruff Key
29	20774	1	Drive Gear
30	10001	13	Cap Screw (#10-32 UNF X 1-3/4" Lg.; Torque to 50/60 in. lbs.)
31	11198	2	Needle Bearing
32	21093	1	Key
33	21092	1	Adapter
34	12389	1	Backup Washer (11/16 x 1/2 X 1/16)
35	10266	1	O-ring (3/8 X 1/4 X 1/16)

# HIGH PRESSURE PUMP ASSEMBLY

See Diagram  
on Reverse  
Side for  
Important  
Ass'y.  
Information



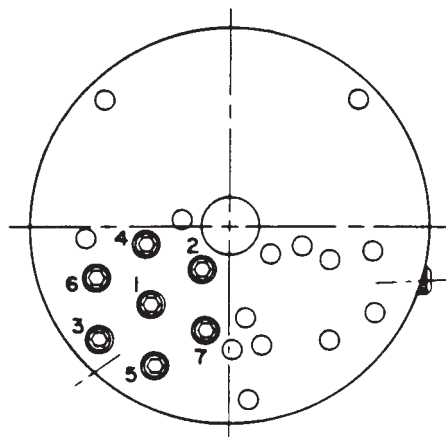
**33113 HIGH PRESSURE PUMP ASSEMBLY**

3 Pistons --- 9/32 Dia.

Item No.	Part No.	No. Req'd	Description
1	10442	1	Copper Washer
2	10002	1	Soc. Hd. Cap Screw (1/4-20 UNC X 3/8 Lg.; Torque to 140/160 in. lbs.)
3	*24549	6	Valve Guide
4	*10445	6	Compression Spring (5/32 O.D. X 3/4 Lg.)
5	*12223	7	Steel Ball (3/16 dia.)
6	*10023	7	Soc. Hd. Cap Screw (1/4-28 UNF X 1-1/2" Lg.; Torque to 170/180 in. lbs.)
7	*50411	1	Top Plate
8	10519	1	Soc. Set Screw (Torque to 65/70 in. lbs.)
9	*40630	1	Valve Head
10	*41062	1	Pump Barrel
11	*21628	3	Piston

Consult factory when replacing items marked with an asterisk (\*).

**BOLT TIGHTENING SEQUENCE**



**Note:** Assemble in sequence shown.  
Lubricate under head and on threads.  
Torque to 170/180 in. lbs.

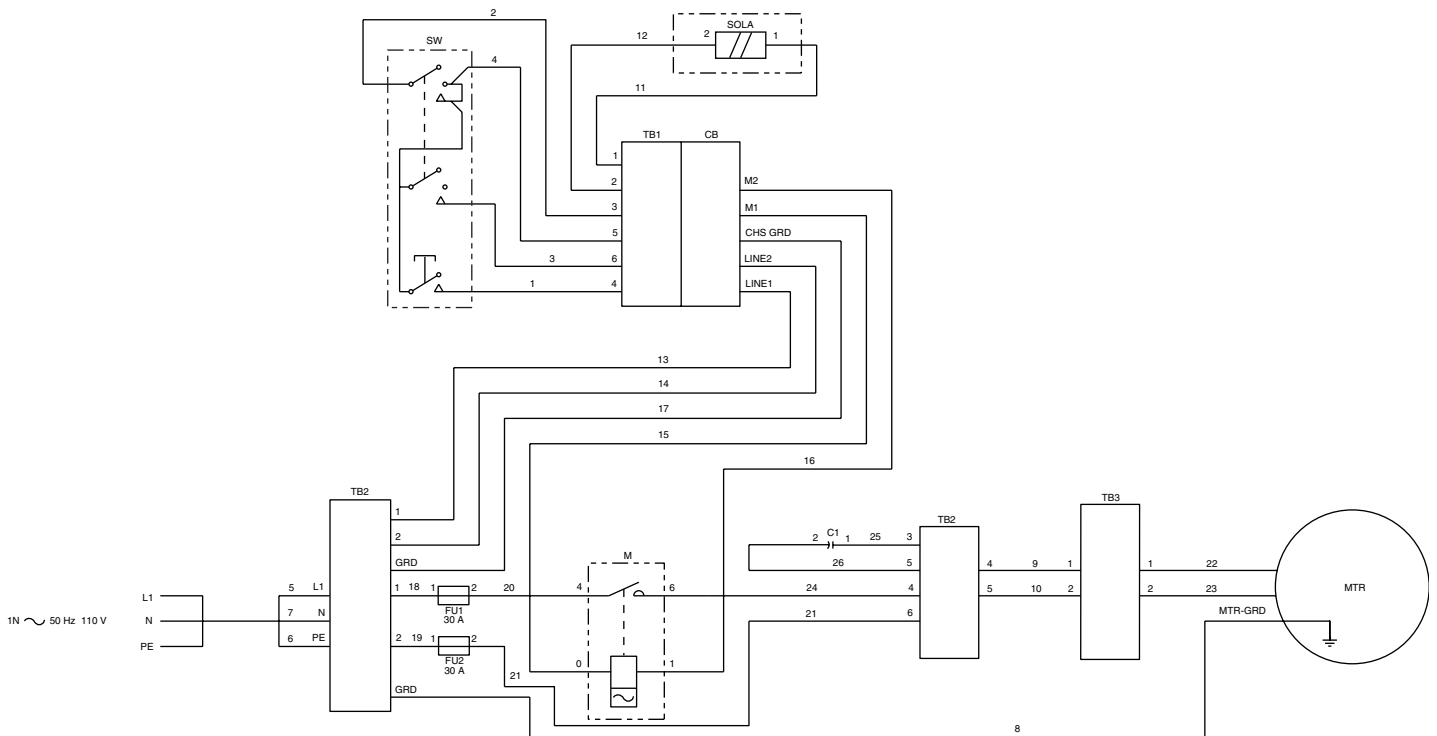
Note: Shaded areas reflect last revision(s) made to this form.



Item No.	Part No.	No. Req'd	Description	Item No.	Part No.	No. Req'd	Description
1	351666	1	Hand Control Assembly (See back sheet 8 of 9)	18	251839	1	Cord Set
2	12409	4	Screw (8-32 x 5/8 Lg.)	19	12354	1	Screw (10-24 x 5/8 Lg.)
3	252253	4	Screw (8-32 x 3/8 Lg.)	20	11108	2	Washer
4	351588	1	Mounting Plate	21	10197	1	Hex Nut (10-24)
5	421663	1	Relay (240 volt)	22	251879	1.83'	Electrical Cable (1.5 MM/3 HAR)
6	216667	1	Strain Relief Bushing	23	16099	1	Screw (6-32 x 3/4 Lg.)
7	216680	3	Conduit Locknut	24	15906	1	Washer
8	351844	1	Solenoid Valve (4 way; 3000 PSI)	25	10195	1	Hex Nut (6-32)
9	59036	1	Control Box	26	351130	.17	Terminal Block
10	421477	1	Circuit Board (Note: Set input voltage selector switch to 230 V. position.)	27	253551	1	Partition Block
11	10447	2	Screw (8-32 x 5/16 Lg.)	28	253113	4	Terminal Block
12	10196	2	Hex Nut (8-32)	29	253112	2	Fuse (15 AMP 600 V.)
13	350988	1	Decal (CE)	30	351668	1	Fuse Holder
14	251898	1	Warning Decal	31	251841	2	Grounding Terminal Block
15	251762	1	Warning Decal	32	251848	1	Terminal Fuse Block
16	216666	4	Strain Relief Bushing	33	252196	1	Capacitor
17	421608WH2	1	Mounting Bracket	34	253405	1	Connector
				35	253592	18"	Cable (.75 MM/3 HAR)

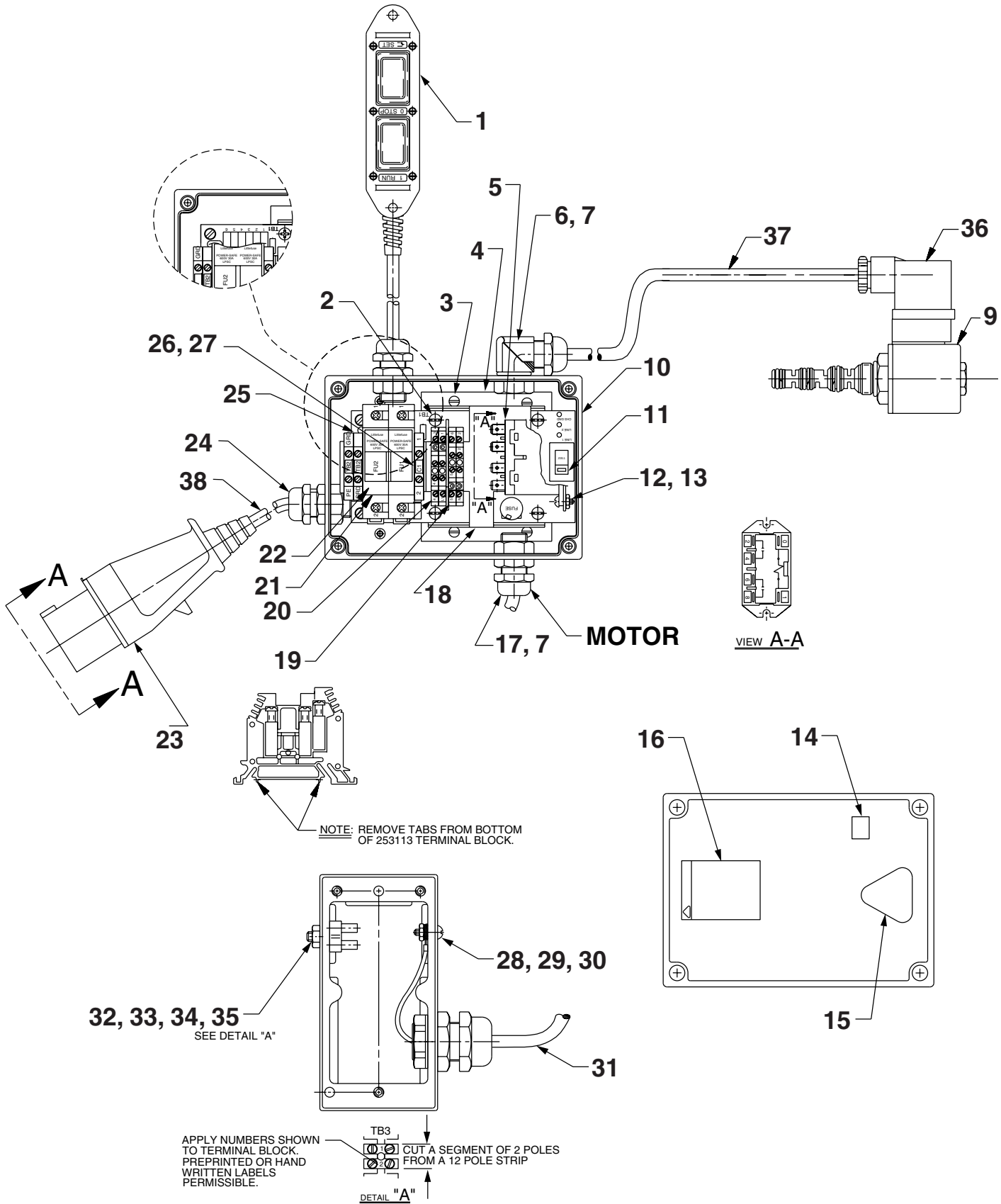
Note: Shaded areas reflect last revision(s) made to this form.

### ELECTRICAL SCHEMATIC



Note: Electrical Schematic changed at last revision(s) made to this form.

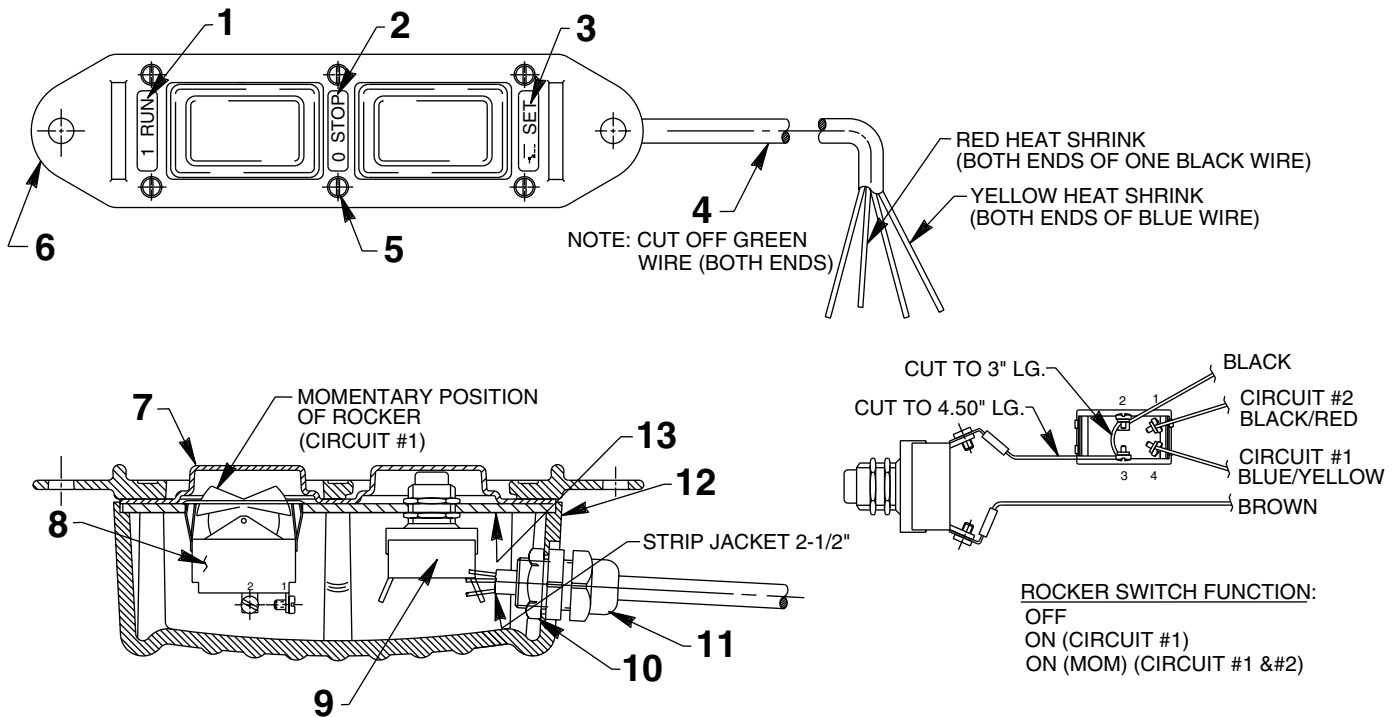
# MOTOR CONTROL ASSEMBLY FOR SST-UK110



Item No.	Part No.	No. Req'd	Description	Item No.	Part No.	No. Req'd	Description
1	<b>351666</b>	1	Hand Control Assembly (See back sheet 8 of 9)	20	<b>253113</b>	4	Terminal Block
2	<b>12409</b>	4	Screw (8-32 x 3/8 Lg.)	21	<b>351668</b>	1	Fuse Holder
3	<b>252253</b>	4	Screw (8-32 x 3/8 Lg.)	22	<b>253135</b>	2	Fuse (30 AMP 600 V.)
4	<b>351588</b>	1	Mounting Plate	23	<b>351300</b>	1	Connector Plug
5	<b>360001</b>	1	Relay (120 volt)	24	<b>252387</b>	1	Strain Relief Bushing
6	<b>216667</b>	1	Strain Relief Bushing	25	<b>251841</b>	2	Grounding Terminal Block
7	<b>216680</b>	4	Conduit Locknut	26	<b>251848</b>	1	Terminal Fuse Block
9	<b>351843</b>	1	Solenoid Valve (4 way; 3000 PSI)	27	<b>252196</b>	1	Capacitor
10	<b>59036</b>	1	Control Box	28	<b>12354</b>	1	Screw (10-24 x 5/8 Lg.)
11	<b>421477</b>	1	Circuit Board (Note: Set input voltage selector switch to 230 V. position.)	29	<b>11108</b>	2	Washer
12	<b>10447</b>	2	Screw (8-32 x 5/16 Lg.)	30	<b>10197</b>	1	Hex Nut (10-24)
13	<b>10196</b>	2	Hex Nut (8-32)	31	<b>251879</b>	1.83'	Electrical Cable (1.5 MM/3 HAR)
14	<b>350988</b>	1	Decal (CE)	32	<b>16099</b>	1	Screw (6-32 x 3/4 Lg.)
15	<b>251898</b>	1	Warning Decal	33	<b>15906</b>	1	Washer
16	<b>251762</b>	1	Warning Decal	34	<b>10195</b>	1	Hex Nut (6-32)
17	<b>216666</b>	3	Strain Relief Bushing	35	<b>351130</b>	.17	Terminal Block
18	<b>421608WH2</b>	1	Mounting Bracket	36	<b>253405</b>	1	Connector
19	<b>253551</b>	1	Partition Block	37	<b>253592</b>	18"	Cable (.75 MM/3 HAR)
				38	<b>252241</b>	8'	Cable (4.0 MM/3 HAR)

Note: Shaded areas reflect last revision(s) made to this form.

## REMOTE HAND SWITCH ASSEMBLY



Item No.	Part No.	No. Req'd	Description
1	253105	1	Decal (Run)
2	253106	1	Decal (Stop)
3	253107	1	Decal (Set)
4	251864	21 ft.	Electrical Cable (1.5MM/5 HAR)
5	250248	6	Screw (4-24 x 3/4 Lg.)
6	251044	1	Plastic Cover
7	420050-2	1	Gasket

Item No.	Part No.	No. Req'd	Description
8	420017	1	Rocker Switch
9	253197	1	Push Button Switch
10	251802	1	Locknut
11	253103	1	Strain Relief Bushing
12	420050-4	1	Switch Housing
13	420050-5	1	Switch Mounting Plate

Note: Shaded areas reflect last revision(s) made to this form.

**RECOMMENDED MINIMUM WIRE SIZE-AWG (mm<sup>2</sup>)  
OF EXTENSION CORDS FOR  
POWER TEAM ELECTRIC PUMPS**

Current At Full Load (Amps)	Cord Size AWG (mm <sup>2</sup> ) 3.2 Volt Drop			
	Length of Cord			
	0-25 feet (0-8 m)	25-50 feet (8-15 m)	50-100 feet (15-30 m)	100-150 feet (30-45 m)
6	18 (.82)	16 (1.33)	14 (2.09)	12 (3.32)
8	18 (.82)	16 (1.33)	12 (3.32)	10 (5.37)
10	18 (.82)	14 (2.09)	12 (3.32)	10 (5.37)
12	16 (1.33)	14 (2.09)	10 (5.37)	8 (8.37)
14	16 (1.33)	12 (3.32)	10 (5.37)	8 (8.37)
16	16 (1.33)	12 (3.32)	10 (5.37)	8 (8.37)
18	14 (2.09)	12 (3.32)	8 (8.37)	8 (8.37)
20	14 (2.09)	12 (3.32)	8 (8.37)	6 (13.30)
22	14 (2.09)	10 (5.37)	8 (8.37)	6 (13.30)
24	14 (2.09)	10 (5.37)	8 (8.37)	6 (13.30)
26	12 (3.32)	10 (5.37)	8 (8.37)	6 (13.30)
28	12 (3.32)	10 (5.37)	6 (13.30)	4 (21.29)
30	12 (3.32)	10 (5.37)	6 (13.30)	4 (21.29)