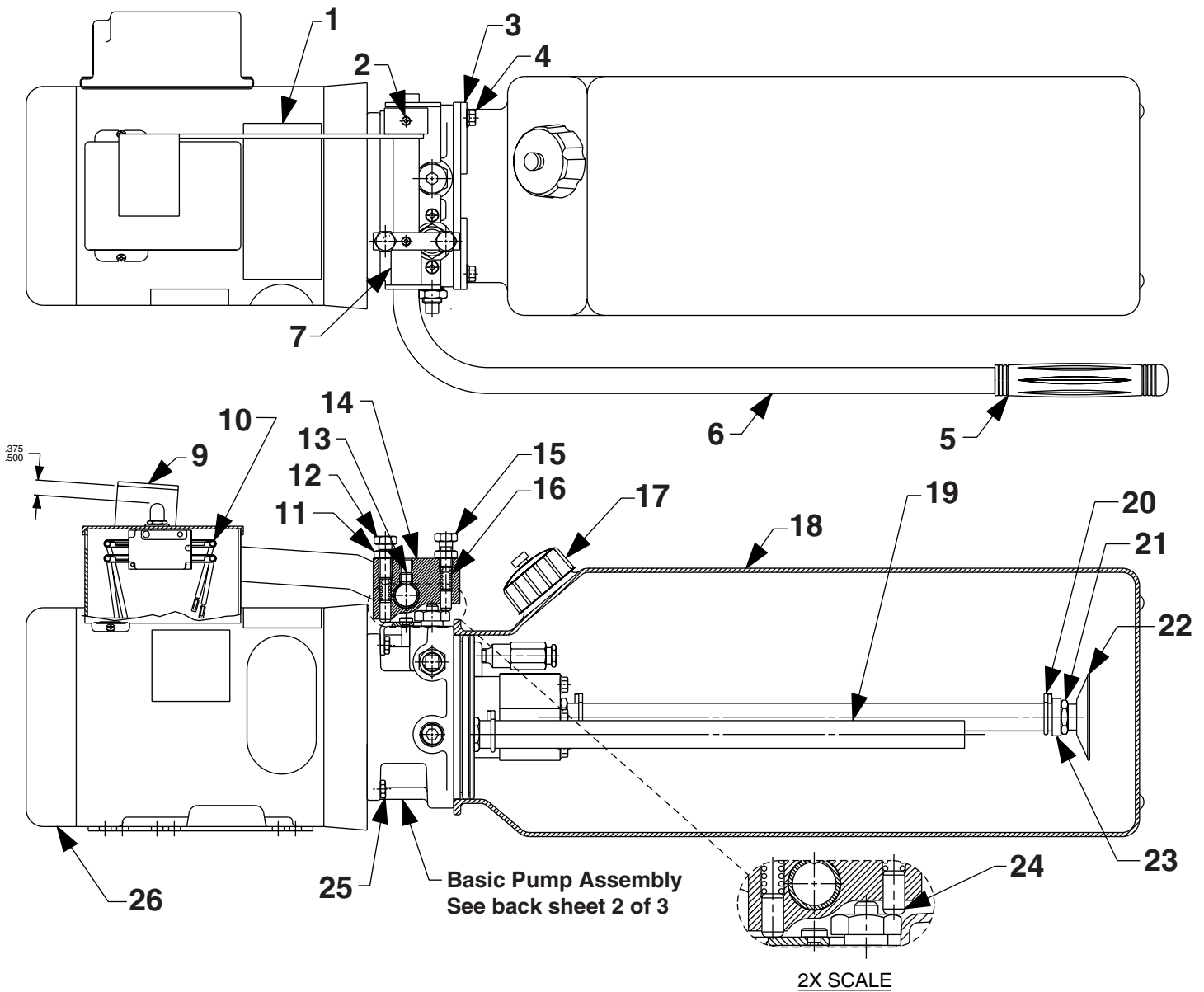


MODEL D
ELECTRIC HYDRAULIC GEAR PUMP



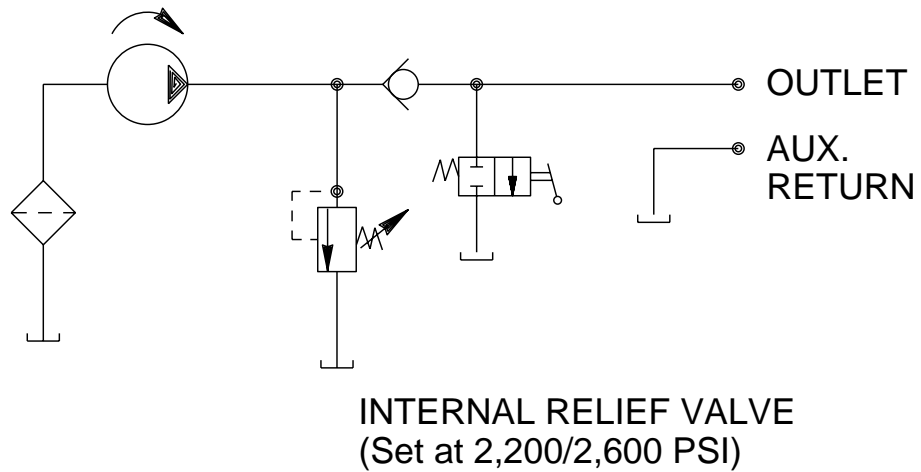
Item No.	Part No.	No. Req'd	Description
1	351667	1	Decal, Warning
2	10519	1	Screw, Hex Set (1/4-20 x 3/8 Lg)
3	253528	4	Support, Reservoir Flange
4	10009	4	Screw, Hex HD Cap (1/4-20 x 3/4)
5	11610	1	Grip, Handle
6	59112	1	Tube
7	253184	1	Spacer
9	421704	1	Lever, Hand
10	351867	2	Assembly, Wire (Connect to common side of switch.)
11	253187	2	Nut, Hex (3/8-16)
12	10049	1	Screw, Hex HD Cap (3/8-16 x 1)
13	18627	1	Screw, Set (3/8-16 x 3/8 LG)
14	351729	1	Actuator
15	10046	1	Screw, Hex HD Cap (3/8-16 x 3/4)
16	14475	2	Spring (.31 OD x .62 x .07 WS)
17	252646	1	Cap, Filler Breather
18	66146	1	Reservoir (3.5 Gallon)
19	252630	2.33 ft.	Tubing, Plastic
20	252756	3	Clamp, Hose
21	252617	1	Fitting, Hose (1/2-20 UNF)
22	29682	1	Filter
23	253331	1	Magnet
24	253186	2	Pin, Dowel (.31 x .62 ; Install with radius end out.)
25	10048	4	Screw, Hex HD Cap (3/8-16 x 7/8)
26	59089	1	Motor, Elec (208/230 V., 60 Hz.)



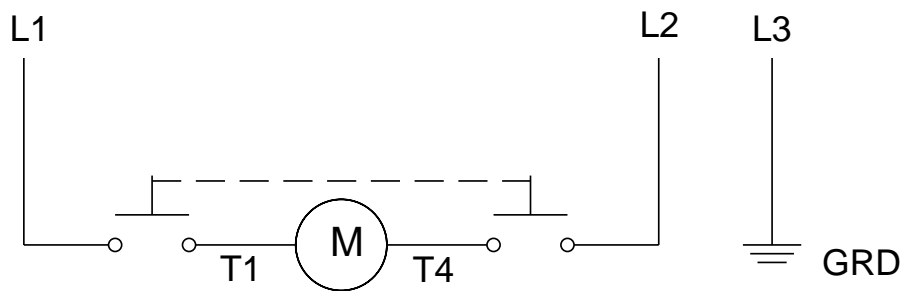
HANDLE ASSEMBLY INSTRUCTIONS

1. Tighten lower cap screw (Item #15) until there is a gap of approx. .015" between the actuator body and the release valve stem.
2. Tighten upper cap screw (Item #12) until the gap is approx. .010".
3. Tighten each cap screw (Items #15 & #12) an additional 1/4 turn.
4. Tighten lock nuts (Item #11) to secure each cap screw.
5. Position "Switch Paddle" (Item #9) so there is .375/.500 between paddle surface and pushbutton switch on motor. Tighten set screw (Item #2) securely.

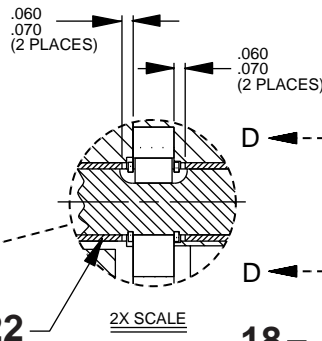
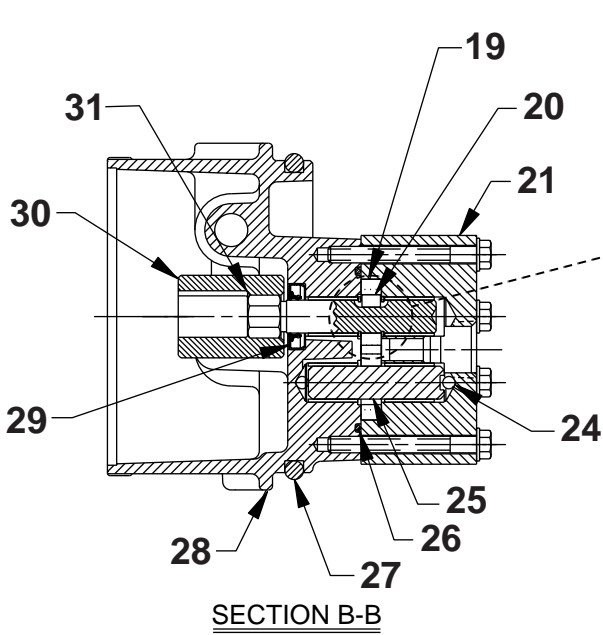
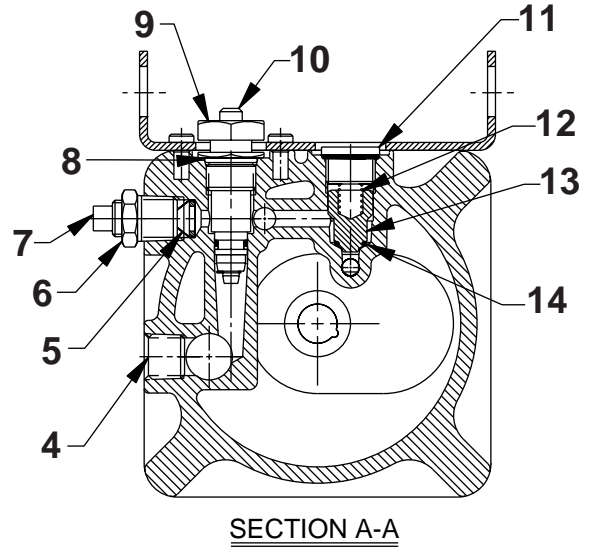
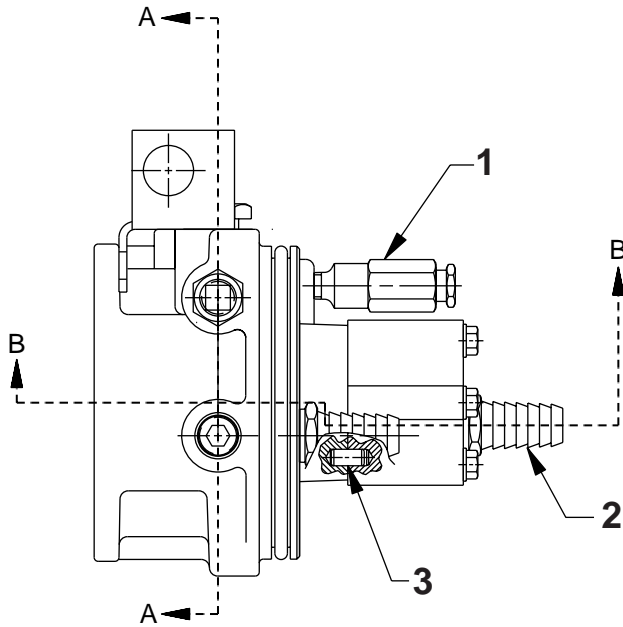
HYDRAULIC SCHEMATIC



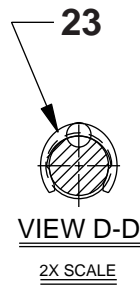
ELECTRICAL SCHEMATIC



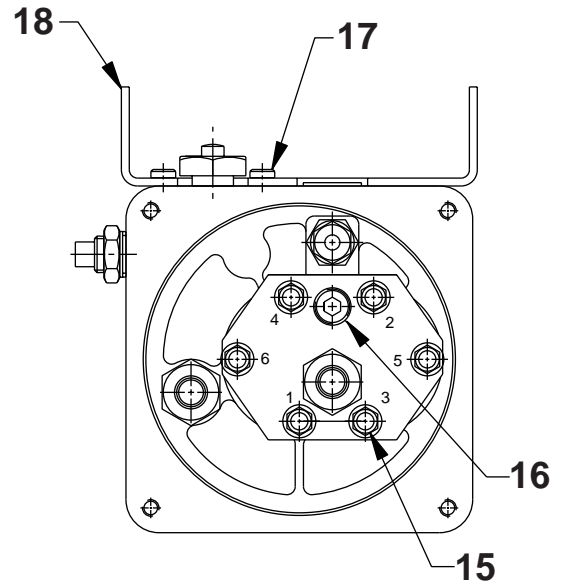
BASIC PUMP ASSEMBLY



2X SCALE



2X SCALE



Item No.	Part No.	No. Req'd	Description
1	421638-21	1	Valve, Relief (Set at 2,200/2,600 PSI)
2	252618	2	Fitting, Hose (1/2 NPTF)
3	15156	2	Pin, Dowel (.25 x .50)
4	16232	1	Fitting, Plug (3/8 NPTF)
5	253519	1	Filter
6	10676	1	Fitting, Straight (3/8 NPTF)
7	10970	1	Fitting, Plug (1/4 NPTF)
8	10527	1	O-ring (.81 x .64 Nitrile)
9	351465	1	Cap, Release Valve
10	351633	1	Valve, Release
11	214014	1	Fitting, Plug (1/2 Tube)
12	10425	1	Spring (.37 OD x .75 x .03 WS)
13	351827	1	Body, Poppet
14	14763	1	O-ring (.43 x .31 Urethane)
15	253494	6	Screw, Hx HD Tap (1/4-20 x 2.25; Cross torque to 120 in. lbs. in order shown.)
16	14972	1	Fitting, Plug (1/4 PTF)
17	253493	3	Screw, Hx Soc Tap (1/4-20 x .50; Torque to 70 in. lbs.)
18	421802	1	Bracket, Mounting
19	421819-2.5	2	Gear
20	253070-2.5	1	Key
21	65918-2.5	1	Body, Pump
22	253071	4	Bearing, Sleeve
23	253072	2	Ring, Retain Ext. (0.44 x .035; Position retaining ring to keyway as shown.)
24	12223	2	Ball (3/16" Dia. Steel)
25	253068	1	Shaft
26	253069	1	O-ring (2.250 x 2.062 Nitrile)
27	252645	1	O-ring (4.750 x 4.375 Nitrile)
28	65738	1	Body, Valve
29	252616	1	Seal, Oil Shaft
30	351625	1	Coupling
31	351627-2.5	1	Shaft



Note: Shaded areas reflect last revision(s) made to this form.