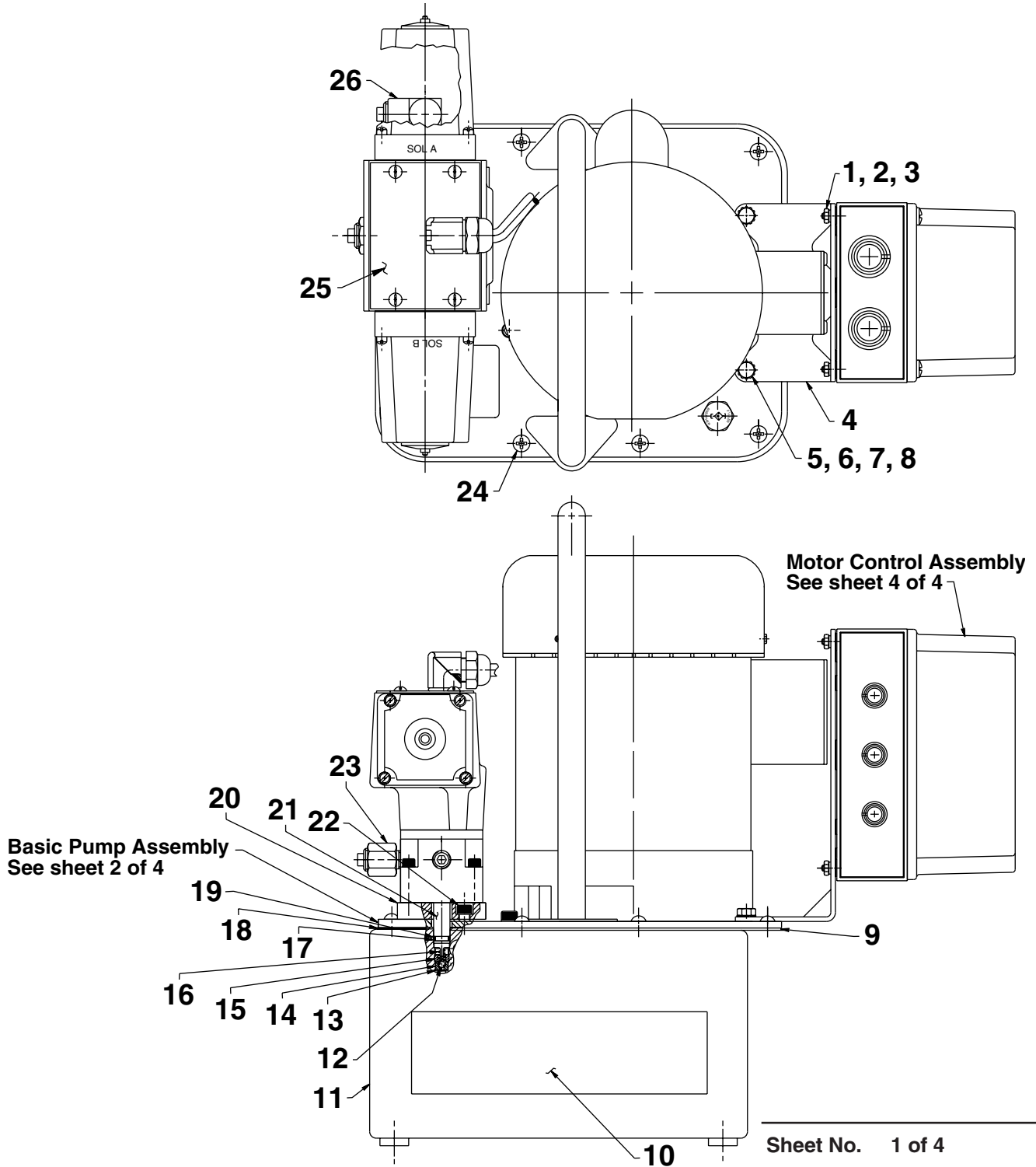


**MODEL B
 ELECTRIC HYDRAULIC PUMP**

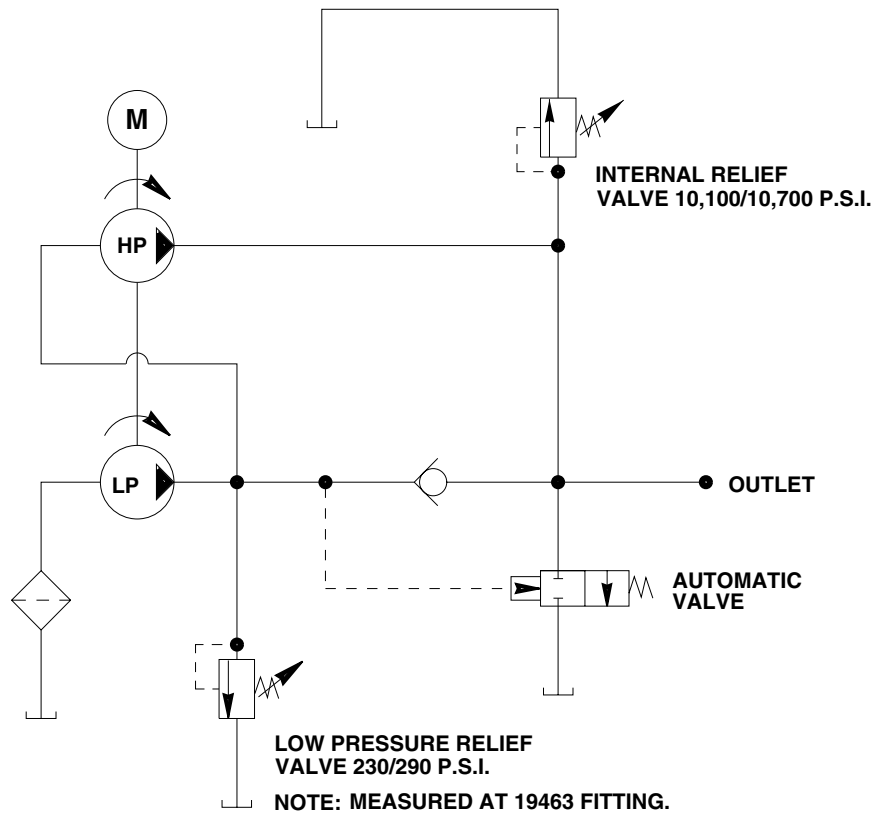


Parts List, Form No. 108120, Back sheet 1 of 4

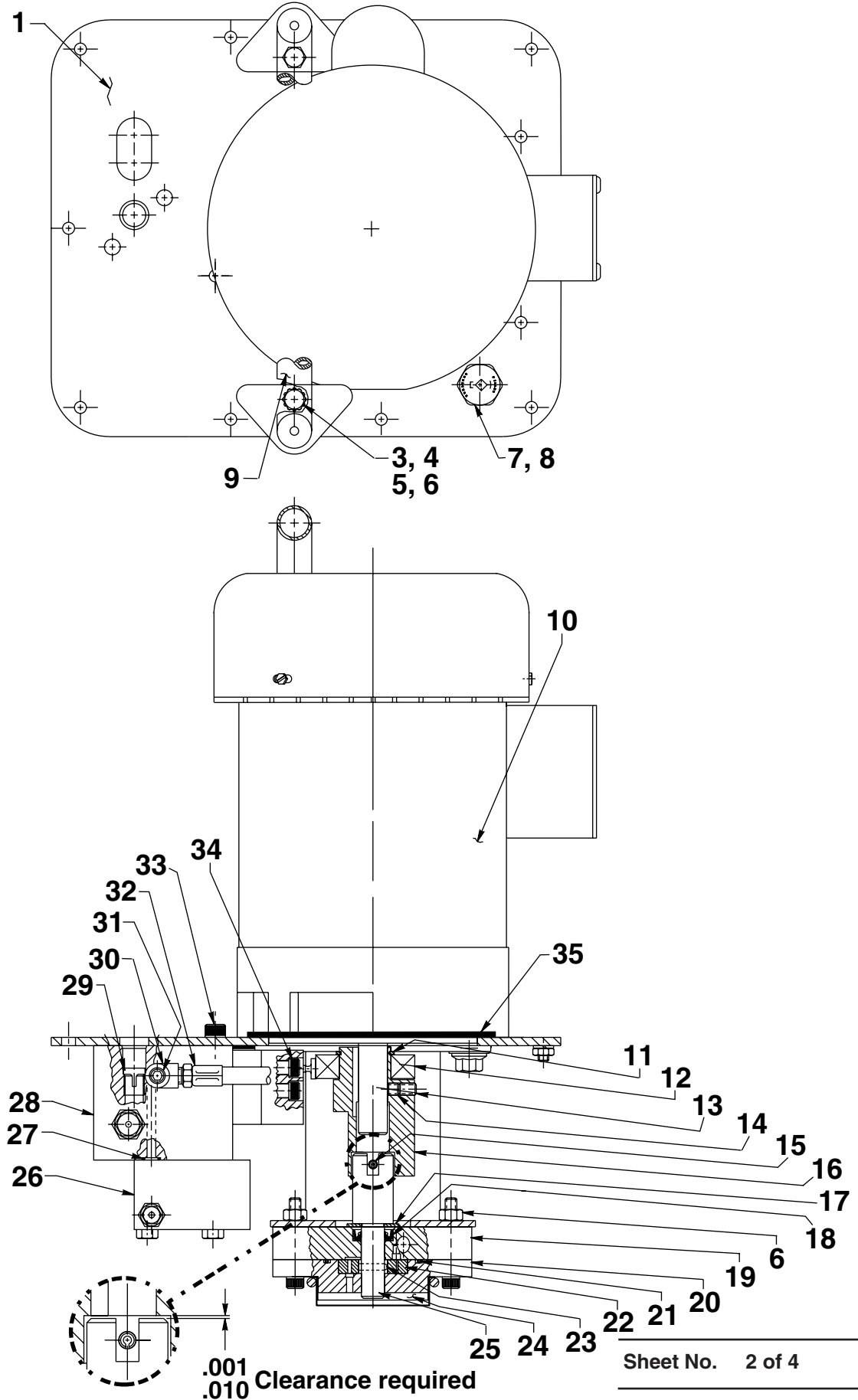
Item No.	Part No.	No. Req'd	Description	Item No.	Part No.	No. Req'd	Description
1	253508	4	Soc. Hd. Screw (8-32 x 7/8)	15	209797	1	Hollow Lock Screw (7/16-20 x 1/4; Torque to 180/200 in. lbs.)
2	10241	4	Lockwasher (.33 x .20)	16	211797	1	Spring (.16 OD x .63 x .01 ws)
3	10196	4	Hex Nut (8-32)	17	10268	2	O-ring (.50 x .37 Nitrile)
4	59396BK2	1	Mounting Bracket	18	200395	1	Gasket
5	10009	2	Cap Screw (1/4-20 x 3/4)	19	11863	2	Backup Washer (.50 x .38)
6	11351	2	Ext. Tooth Washer (.50 x .26)	20	52165	1	Manifold
7	10245	2	Lockwasher (.49 x .26)	21	209809	1	Coupling
8	10199	2	Hex Nut (1/4-20)	22	10030	2	Soc. Hd. Screw (5/16-18 x 3/4)
9	*40164	1	Gasket	23	9689	1	Reducer Connector
10	309219	2	Decal	24	10177	10	Cap Screw (1/4-20 UNC X 3/4 Lg.)
11	40063OR9	1	Reservoir (Metal)	25	66206-220	1	Valve, Solenoid (4-Way, 230V.)
12	12223	1	Steel Ball (3/16 dia.)	26	16797	1	90° Elbow Fitting
13	10442	1	Copper Washer (.37 x .25)				
14	209787	1	Replaceable Seat				

Part numbers marked with an asterisk (*) are contained in Repair Kit No. 300430.

HYDRAULIC SCHEMATIC



BASIC PUMP ASSEMBLY

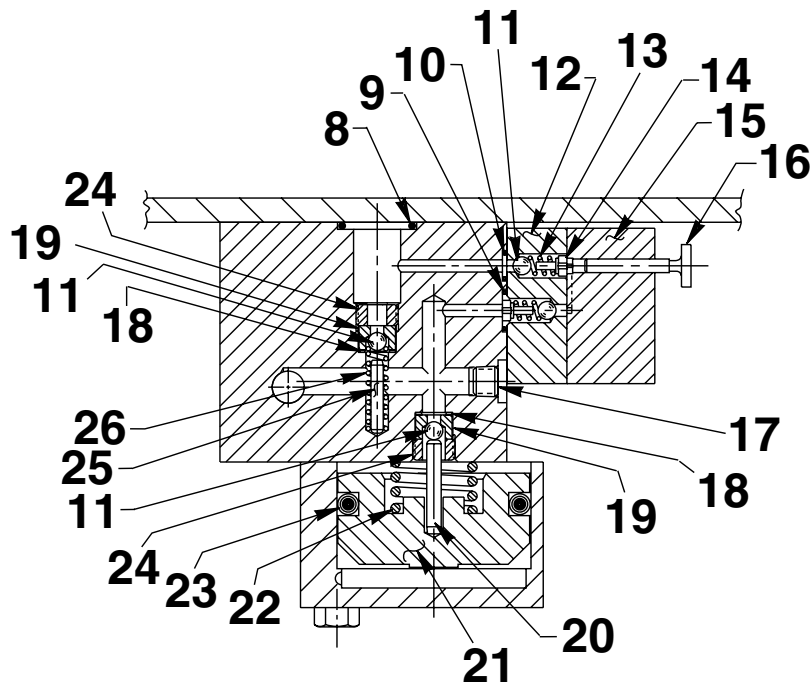
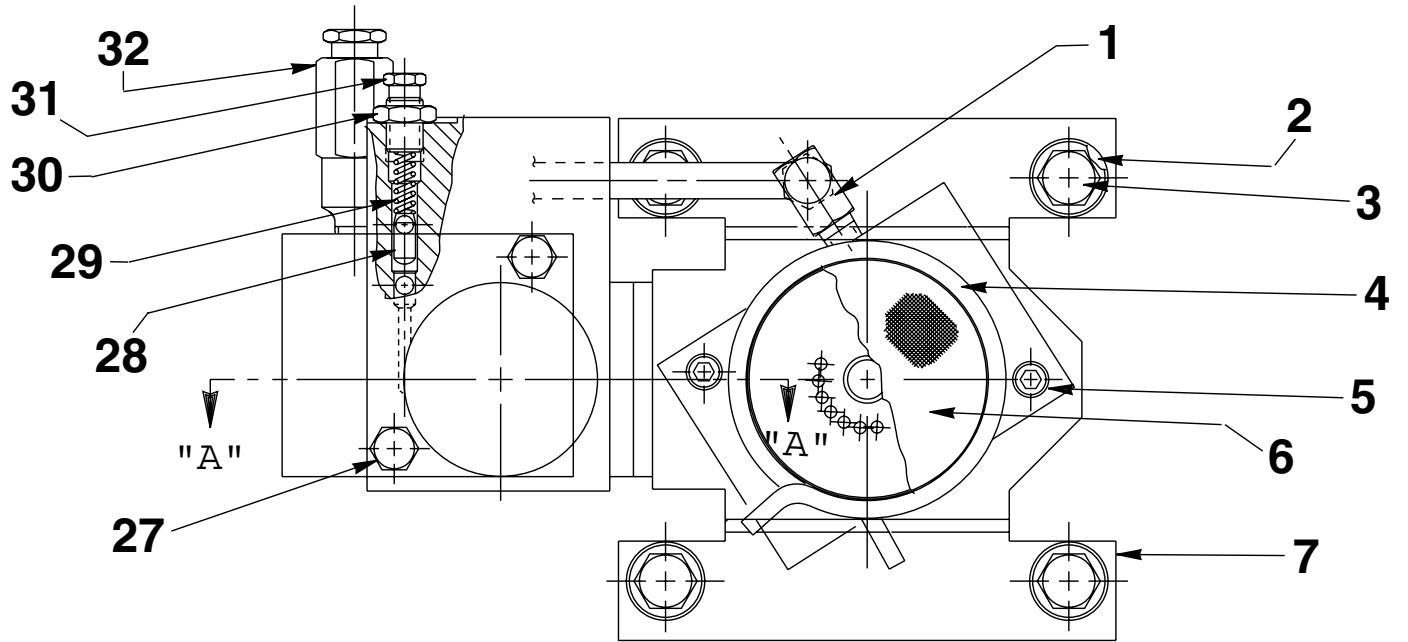


Parts List, Form No. 108120, Back sheet 2 of 4

Item No.	Part No.	No. Req'd	Description
1	64966BK2	1	Cover Plate
3	10009	2	Cap Screw (1/4-20 UNC X 3/4 Lg.; Torque to 60/80 in. lbs.)
4	11351	2	Washer (1/4 External Tooth)
5	10245	2	Washer (For 1/4 bolt)
6	10199	2	Hex Nut (1/4-20 UNC)
7	20937	1	Vent Cap
8	200415	1	Rubber Gasket
9	47492	1	Tube Handle
10	58687	1	Motor (1/2 HP)
	59211	1	Motor (110/220V 50 HZ)
11	209798	1	Retaining Ring
12	209805	1	Ball Bearing
13	10519	1	Set Screw (1/4-20 UNC X 3/8 Lg.; Torque to 60/80 in. lbs.)
14	10136	1	Set Screw (1/4-20 UNC x 1/4 Lg.; Torque to 60/80 in. lbs.)
15	10973	1	Slotted Spring Pin (Note: Locate slot as shown.)
16	45596	1	Eccentric
17	12595	1	Washer (1-1/8 X 1/2 X .077 Thk.)
18	*304830	1	Oil Seal
19	61170	1	Housing
20	61169	1	Gerotor Housing
21	*10922	1	O-ring (2-1/8 X 1-15/16 X 3/32)
22	304826	1	Gerotor
23	209794	1	Gerotor Drive Pin
24	21846	1	Filter Support
25	304835	1	Drive Shaft
26	52167	1	Block
27	*10266	1	O-ring (3/8 X 1/4 X 1/16)
28	61167	1	Body
29	209795	1	Outlet Ball Stop
30	19463	1	Street Tee
31	10427	1	Pressure Plug (1/8 NPTF)
32	304819	1	Hose Assembly
33	10030	2	Cap Screw (5/16-18 UNC X 3/4 Lg.; Torque to 220/240 in. lbs.)
34	10022	4	Screw (1/4-20 UNC X 1-1/2 Lg.; Torque to 180/200 in. lbs.)
35	351060	1	Motor Base Gasket

Part numbers marked with an asterisk (*) are contained in Repair Kit No. 300430.

BOTTOM VIEW & SECTION A-A



SECTION A-A

Parts List, Form No. 108120, Back sheet 3 of 4

Item No.	Part No.	No. Req'd	Description
1	14440	1	90° Elbow Fitting
2	10258	4	Washer (For 3/8 bolt)
3	213663	4	Cap Screw (3/8-16 UNC X 1" Lg.; Torque to 230/250 in. lbs.)
4	11461	1	Hose Clamp
5	10854	2	Cap Screw (1/4-20UNC X 1-3/4 Lg.; Torque to 60/80 in. lbs.)
6	21608	1	Filter
7	52174	1	Pump Mounting Bracket
8	*10273	1	O-ring (13/16 X 5/8 X 3/32)
9	*14763	1	O-ring (7/16 X 5/16 X 1/16)
10	*10265	1	O-ring (5/16 X 3/16 X 1/16)
11	*12223	4	Ball (3/16 Dia.)
12	45559	1	Block
13	*10445	2	Compression Spring (5/32 O.D. X 3/4 Lg.)
14	24549	2	Ball Guide
15	45560	1	Block
16	304820	1	Piston
17	15130	1	Plug (1/16 NPTF)
18	*10442	2	Washer (3/8 X 1/4 X 1/32)
19	*209787	2	Replaceable Seat
20	211843	1	Dowel Pin (Note: Install with radius end out.)
21	46063	1	Piston
22	*16346	1	Compression Spring (1" O.D. X 7/8 Lg.)
23	*10283	1	O-ring (2" X 1-5/8 X 3/16)
24	209797	2	Hollow Lock Screw (7/16-20 UNF-3A; Torque to 180/200 in. lbs.)
25	12149	1	Pin
26	*16057	1	Compression Spring (3/16 O.D. X 1" Lg.)
27	13037	2	Cap Screw (1/4-20 UNC X 2" Lg.; Torque to 40/50 in. lbs.)
28	15156	1	Pin (Note: Install tapered end toward spring.)
29	*11221	1	Compression Spring (1/4 O.D. X 1" Lg.)
30	10386	1	Nut (3/8-24 UNF)
31	*29786	1	Valve Adjusting Screw
32	21278	1	Relief Valve Assembly (Set at 10,100/10,700 PSI)

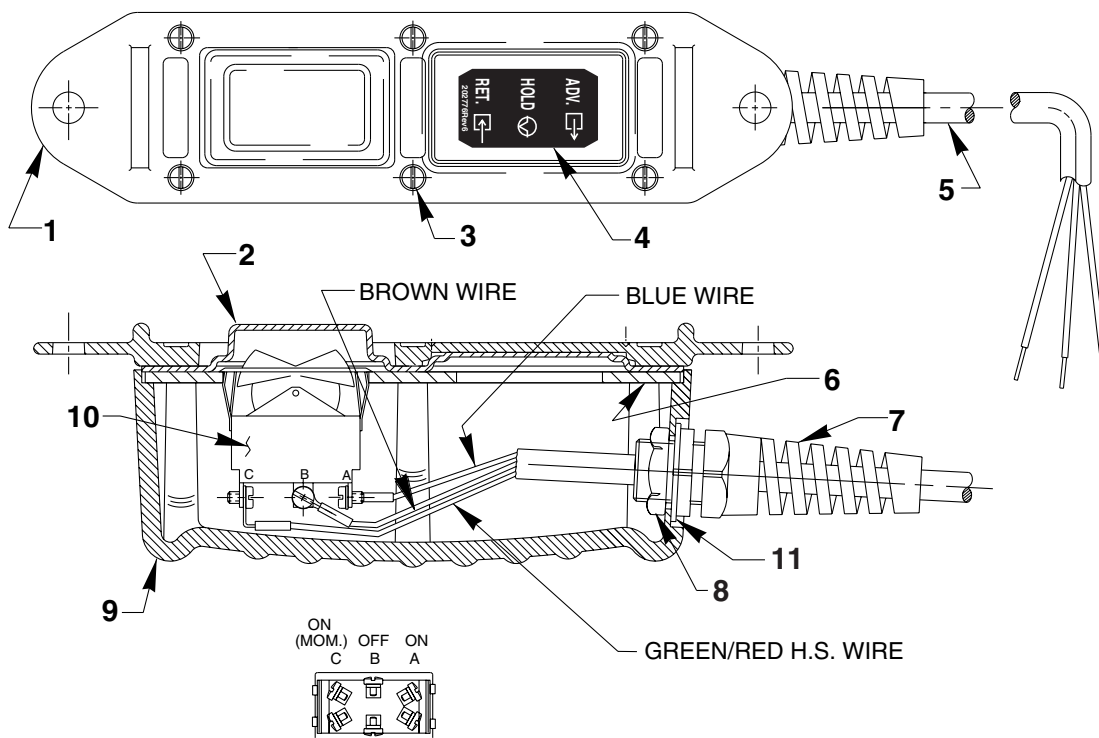
Part numbers marked with an asterisk (*) are contained in Repair Kit No. 300430.

Parts List, Form No. 108120, Back sheet 4 of 4

Item No.	Part No.	No. Req'd	Description
1	351588	1	Mounting Plate
2	251845	2	Jumper (2 pole)
3	421663	1	Relay (240 V.)
4	59036	1	Control Box
5	421898	1	Circuit Board
6	10447	2	Rnd. Hd. Screw (8-32 x 5/16)
7	10196	2	Hex Nut (8-32)
8	421608WH2	1	Mounting Bracket
9	251840	4	Terminal Block (Single Level)
10	10443	2	Ring Tongue Terminal
11	216666	5	Bushing
12	216680	6	Conduit Locknut
13	252508	1	Hand Switch Assembly (See below)
14	351130	1	Terminal Block

Item No.	Part No.	No. Req'd	Description
15	251550	1	Terminal Block
16	251879	10'	Cable (1.5MM/3 HAR)
17	216667	1	Strain Relief Bushing
18	251842	1	End Barrier
19	360002-6	1	Circuit Breaker (6 AMP)
20	251852	7	Markers
21	251841	2	Terminal Block
22	251898	1	CE Elect. Warning Decal
23	350988	1	CE Decal
24	251762	1	Warning Decal
25	12409	4	Machine Screw (8-32 x 5/8)
26	252253	4	Pan Hd. Screw (8-32 x 3/8)

REMOTE HAND SWITCH No. 252508



Item No.	Part No.	No. Req'd	Description
1	420050-1	1	Plastic Cover
2	420050-2	1	Gasket
3	250248	6	Screw (4-24 x 3/4 Lg.)
4	202776	1	Decal
5	251879	10 ft.	Electrical Cable (1.5 MM/3)
6	420050-3	1	Switch Mounting Plate

Item No.	Part No.	No. Req'd	Description
7	251818	1	Strain Relief Bushing
8	251802	1	Locknut (Torque to 30/35 in. lbs.)
9	420050-4	1	Switch Housing
10	16773	1	Rocker Switch
11	253607	1	Rubber Seal