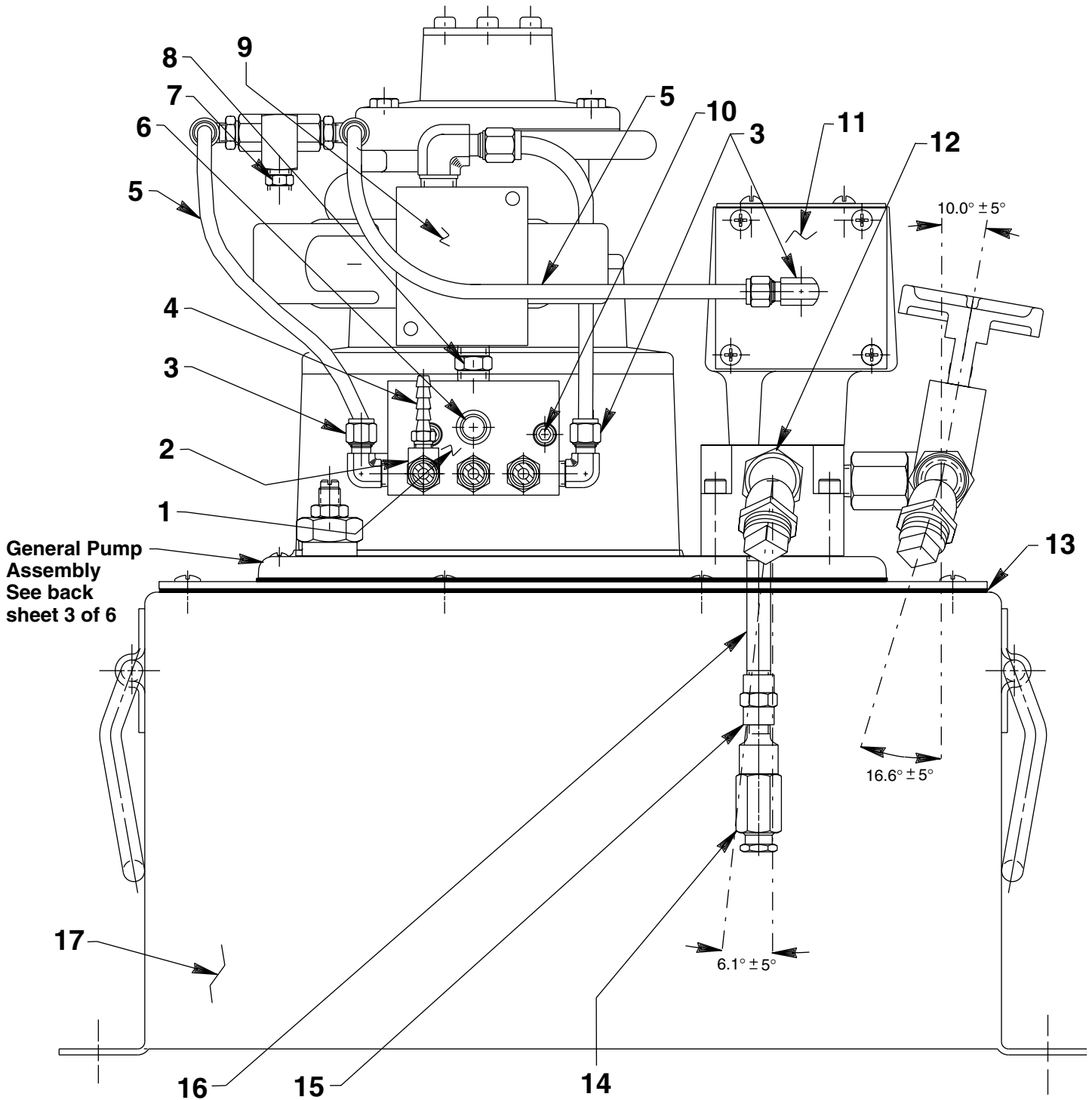


AIR HYDRAULIC PUMP
Max. Capacity: 10,000 PSI



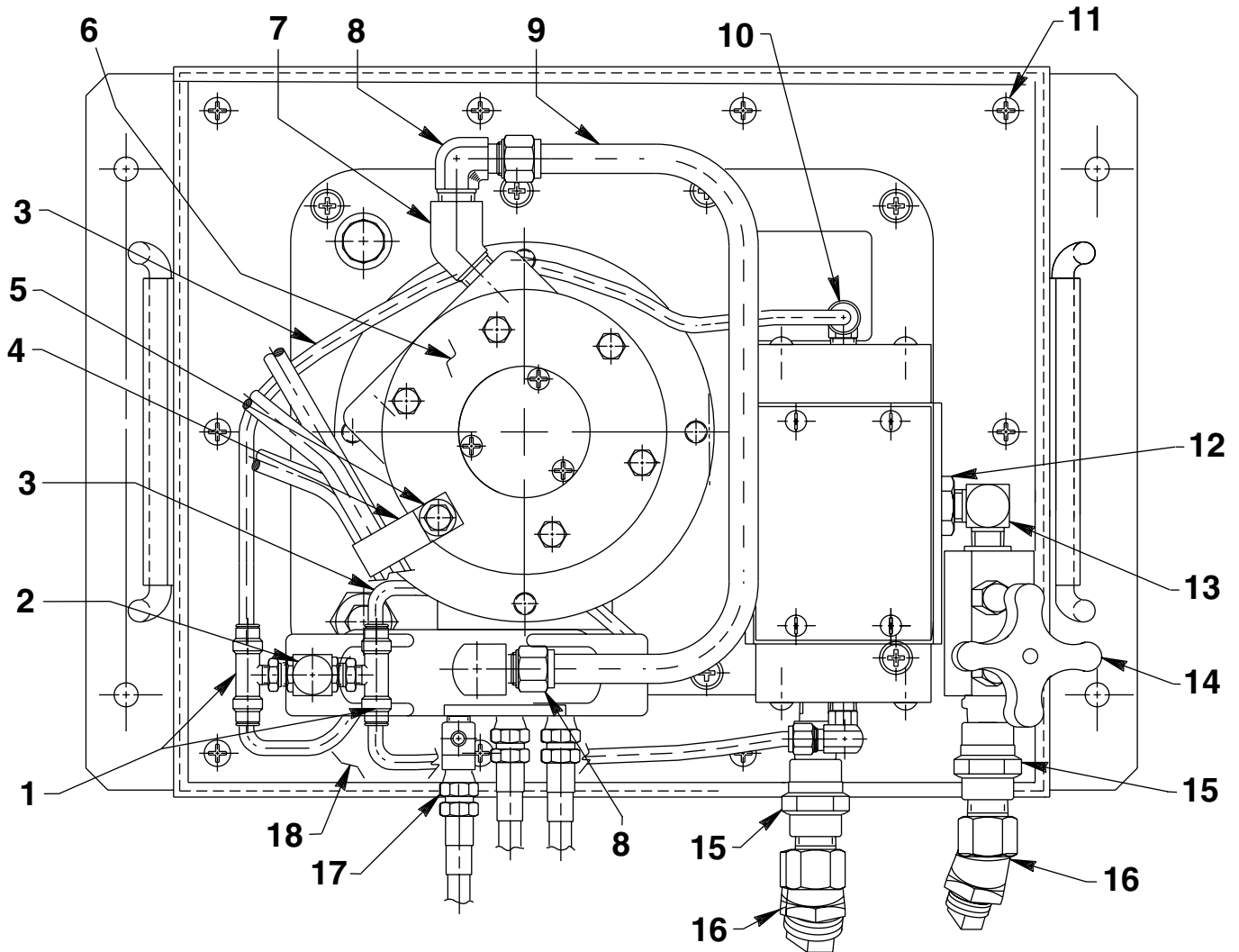
General Pump Assembly
See back sheet 3 of 6

Parts List, Form No. 108151, Back sheet 1 of 6

Item No.	Part No.	No. Req'd	Description
1	351443	1	Manifold
2	19463	1	Tee Fitting
3	250463	4	90° Elbow Fitting (1/8 NPTF)
4	15913	1	Hose Fitting
5	15883	18"	Polyethylene Tubing
6	12545	1	Plastic Cap
7	11421	1	Straight Fitting (1/8 NPTF)
8	14056	1	Straight Fitting (3/8 NPTF x 1/2 NPTF)
9	308608	1	Air Operated 2-Way Valve
10	10022	2	Machine Screw (1/4-20 X 1-1/2" Lg.)
11	66208	1	4-Way Pump Mount Air Valve (See Form No. 108068)
12	9674	1	Male Connector
13	40490	1	Reservoir Gasket
14	21278-10	1	Relief Valve (Set at 900/1,000 PSI)
15	18841	1	Straight Fitting (1/8 NPTF)
16	15456	1	Straight Fitting (1/8 NPTF)
17	40137OR9	1	Reservoir

Note: Shaded areas reflect last revision(s) made to this form.

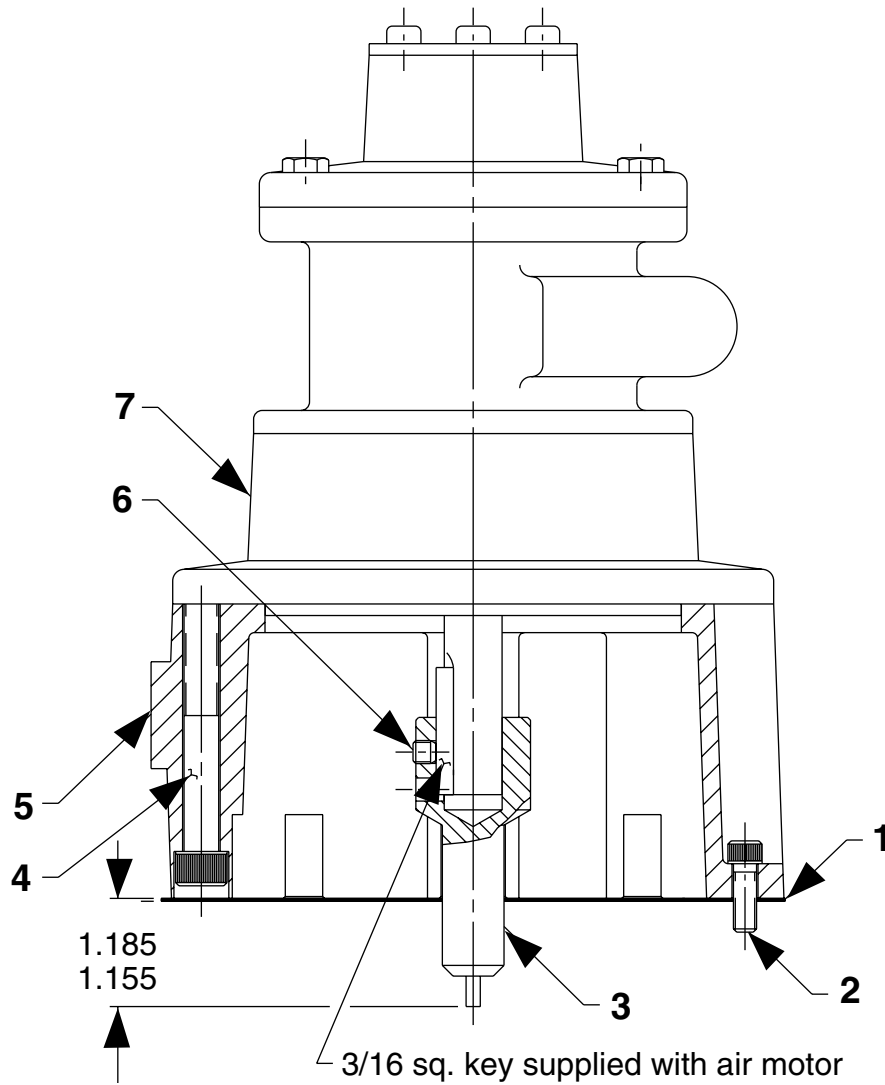
TOP VIEW



Item No.	Part No.	No. Req'd	Description
1	250741	2	Tee Fitting (1/4 Tube)
2	212405	1	Check Valve (1,000 PSI)
3	15883	26.5"	Polyethylene Tubing
4	252291	1	Hose Clamp
5	12719	2	Plain Washer (For 1/4 Bolt)
6	59050	1	Air Motor (See back sheet 2 of 6)
7	253079	1	45° Elbow Fitting
8	252520	2	90° Elbow Fitting (1/2 NPTF)
9	253080	1	Air Line Tube
10	250463	2	90° Elbow Fitting (1/8 NPTF)
11	10177	10	Rnd. Hd. Screw (1/4-20 x 3/4)
12	9689	1	Reducer Connector
13	16254	1	90° Elbow Fitting
14	46647	1	Manual Valve
15	9680	2	Coupling Fitting
16	9677	2	45° Swivel Connector
17	208218	6	Straight Fitting (1/8 NPTF)
18	40194BK2	1	Adapter Cover Plate

Note: Shaded areas reflect last revision(s) made to this form.

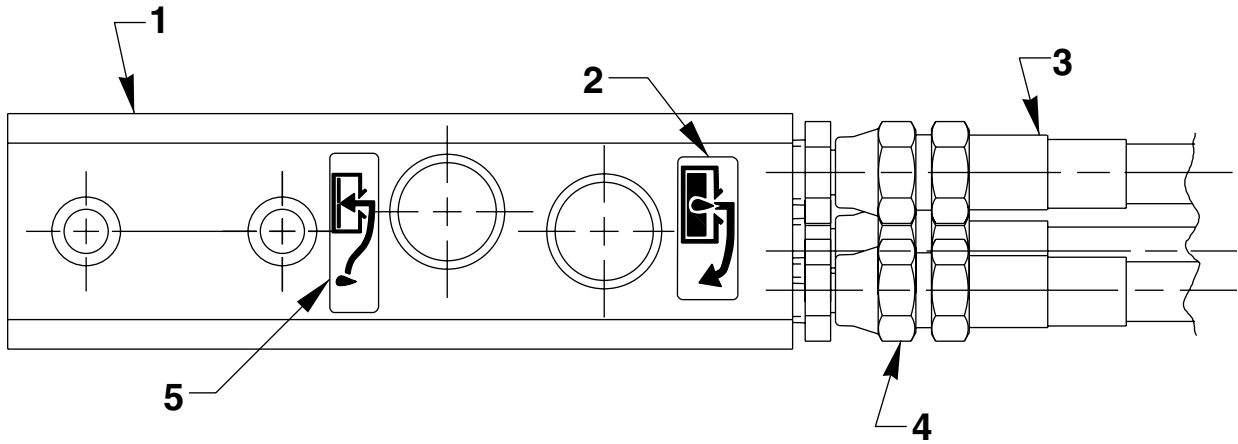
AIR MOTOR ASSEMBLY



Item No.	Part No.	No. Req'd	Description
1	30650	1	Motor Base Gasket
2	10008	4	Screw (1/4-20 x 3/4 Lg.)
3	37842	1	Shaft Extension
4	17816	4	Screw (3/8-16 x 3" Lg.)
5	51158WH2	1	Motor Base
6	10556	1	Set Screw (1/4-20 x 1/3 Lg.)
7	*14717	1	Air Motor (See Form No. 16138)

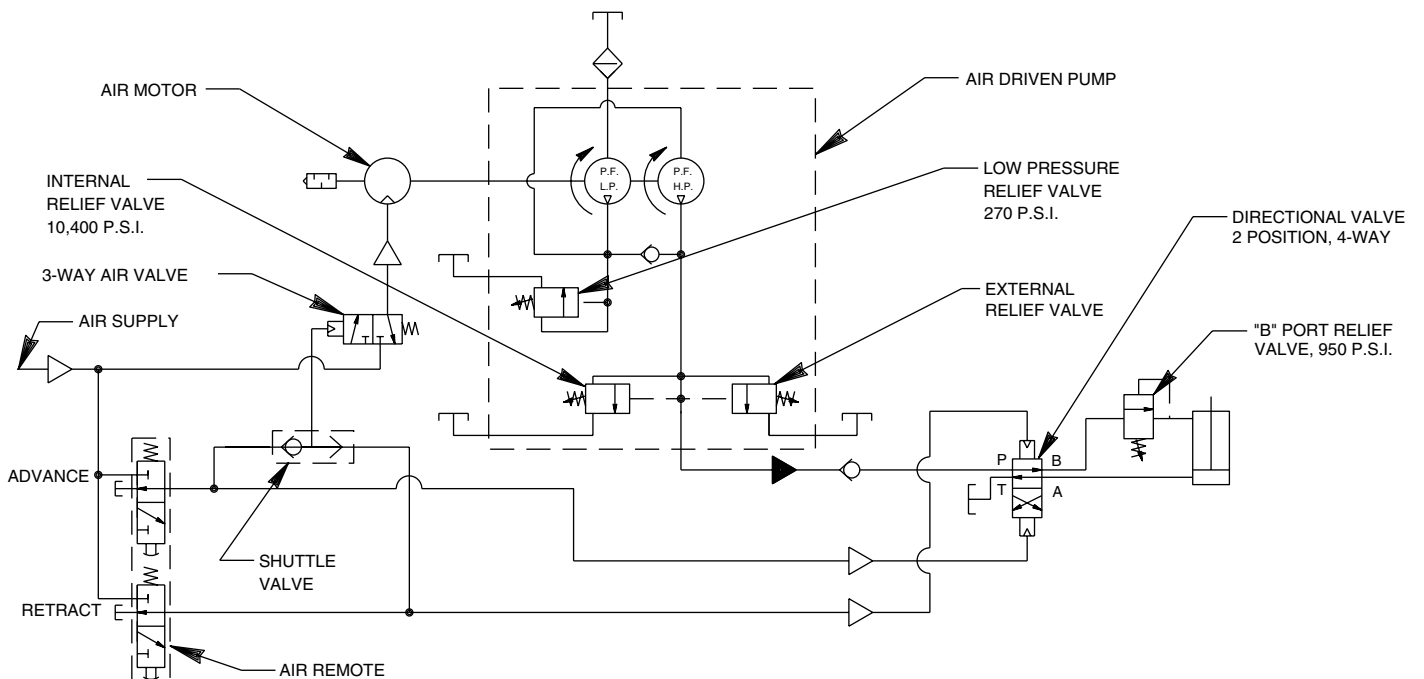
***For air motor replacement parts, order Repair Kit No. 252100.**

HAND SWITCH ASSEMBLY

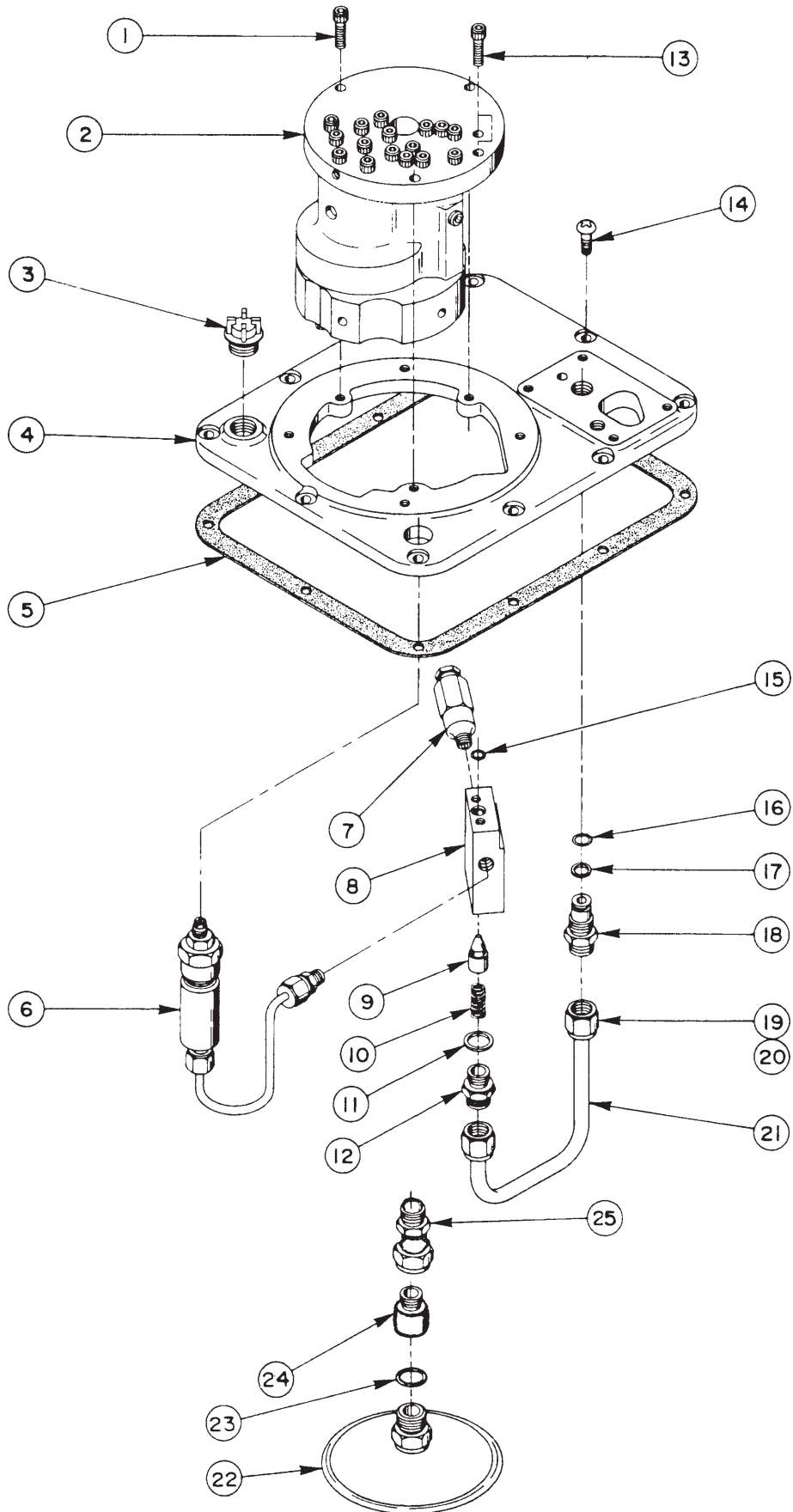


Item No.	Part No.	No. Req'd	Description
1	421265	1	Air Operated Hand Control
2	251759	1	Instruction Decal (Pump)
3	45052	1	Three Strand Hose (12 ft. without spring guards; Note: Connect hose assembly to remote control and pump as shown. Color coded or numbered ends must correspond to numbers on the remote control and pump unit.)
4	208218	3	Straight Fitting (1/8 NPTF)
5	251760	1	Instruction Decal (Release)

HYDRAULIC SCHEMATIC

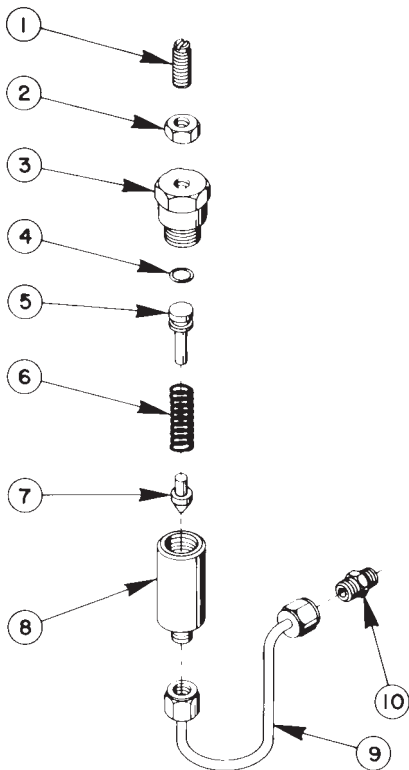


GENERAL PUMP ASSEMBLY



Item No.	Part No.	No. Req'd	Description	Item No.	Part No.	No. Req'd	Description
1	10016	3	Soc. Hd. Cap Screw (1/4-20 UNC X 1" Lg.)	13	10015	2	Soc. Hd. Cap Screw (1/4-28 UNF X 1" Lg.; Torque to 180 in. lbs.)
2	*27206	1	Basic Pump Ass'y Replacement	14	10177	10	Mach. Screw (1/4-20 UNC X 3/4 Lg.)
3	20937	1	Filler Plug	15	10266	1	O-ring (3/8 X 1/4 X 1/16)
4	40064WH2	1	Cover	16	10268	1	O-ring (1/2 X 3/8 X 1/16)
5	40164	1	Gasket	17	11863	1	Teflon Backup Washer (1/2 X 3/8 X 1/16)
6	22360	1	Pressure Regulator Ass'y (See below)	18	20787	1	Valve Connector
7	21278	1	Relief Valve (Set at 10,100/10,700 PSI)	19	10430	2	Tube Sleeve
8	20776	1	Valve Body	20	10431	2	Tube Nut
9	20771	1	Poppet	21	21045	1	Oil Line
10	10425	1	Compression Spring (3/8 O.D. X 3/4 Lg.)	22	21345	1	Filter Ass'y (Includes Item 23)
11	10261	1	Copper Washer (3/4 X 19/32 X 1/32)	23	10527	1	O-ring (13/16 X .644 X .087)
12	20770	1	Connector (Torque to 40/45 ft. lbs.)	24	22033	1	Suction Line
				25	10528	1	Straight Fitting (1/2 NPSM)

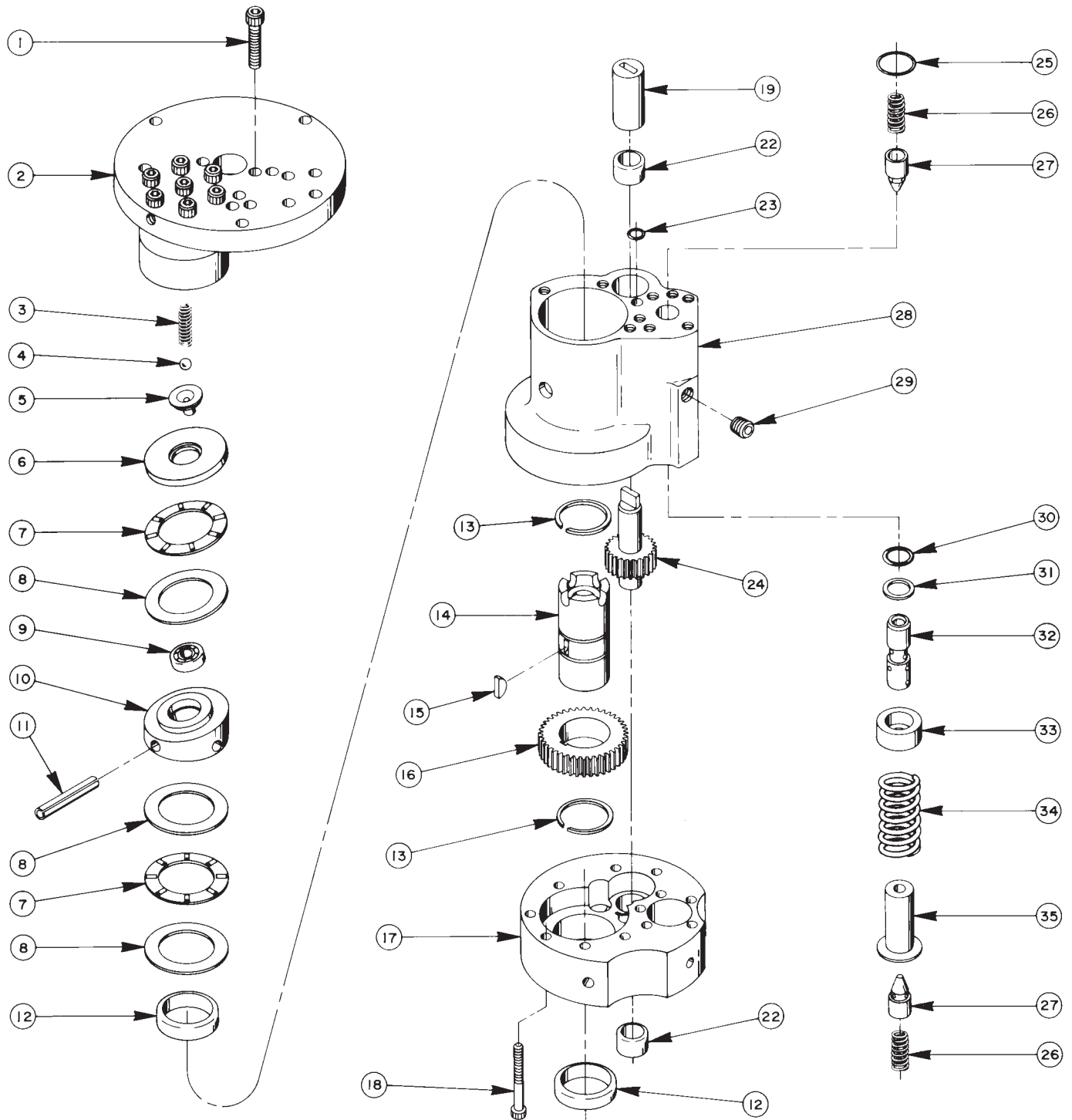
*Includes all items on back sheet 4 of 6 and items 1, 7, 8, 9, 10, 11, 12, 13, 15 & 22 on this sheet.



PRESSURE REGULATOR ASSEMBLY

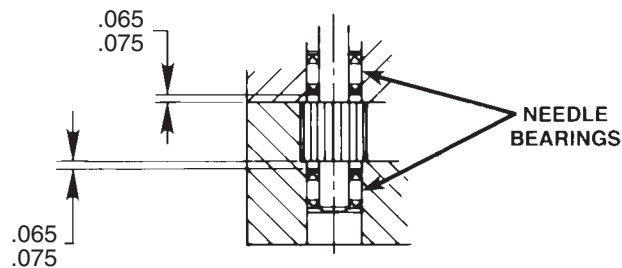
Item No.	Part No.	No. Req'd	Description
1	22362	1	Adjusting Screw
2	10386	1	Hex Jam Nut (3/8-24 UNF)
3	21305	1	Valve Cap
4	10268	1	O-ring (1/2 X 3/8 X 1/16)
5	21306	1	Spring Guide
6	10495	1	Compression Spring
7	21046	1	Valve Stem
8	22361	1	Body
9	29267	1	Oil Line Ass'y (With nuts)
10	14844	1	Connector Fitting

BASIC PUMP ASSEMBLY



Item No.	Part No.	No. Req'd	Description
1	10020	9	Soc. Hd. Cap Screw (1/4-20 UNC X 1-1/4" Lg.; Torque to 170-180 in. lbs.)
2	33113	1	High Pressure Pump Ass'y (See sheet 6 of 6)
3	10361	1	Compression Spring (1/4 O.D. X 1" Lg.)
4	10375	1	Steel Ball (1/4" Dia.)
5	23547	1	Bearing Top Plate
6	23548	1	Top Plate
7	11228	2	Thrust Bearing
8	11813	3	Bearing Race
9	11814	1	Ball Bearing
10	23549	1	Angle Plate
11	11955	1	Roll Pin
12	11064	2	Needle Bearing
13	11261	2	Retaining Ring
14	23556	1	Shaft
15	11821	1	Woodruff Key
16	23557	1	Gear
17	30533	1	Pump End Plate
18	10001	12	Soc. Hd. Cap Screw (#10-32 UNF X 1-3/4 Lg.; Torque to 50 in. lbs.)
19	21091	1	Coupling
22	11199	2	Needle Thrust Bearing (See note below)
23	10266	1	O-ring (3/8 X 1/4 X 1/16)
24	21272	1	Drive Gear
25	10303	1	O-ring (7/8 X 3/4 X 1/16)
26	10425	2	Compression Spring (3/8 O.D. X 3/4 Lg.)
27	20771	2	Poppet
28	40120	1	Pump Body
29	10427	1	Pipe Plug (1/8" NPTF)
30	10271	1	O-ring (11/16 X 1/2 X 3/32)
31	12389	1	Teflon Backup Washer (11/16 X 1/2 X 1/16)
32	20849	1	Spool
33	23255	1	Spring Guide
34	10426	1	Compression Spring (1" O.D. X 1-13/16 Lg.)
35	23256	1	Spring Guide

NEEDLE BEARING INSTALLATION SPECIFICATIONS



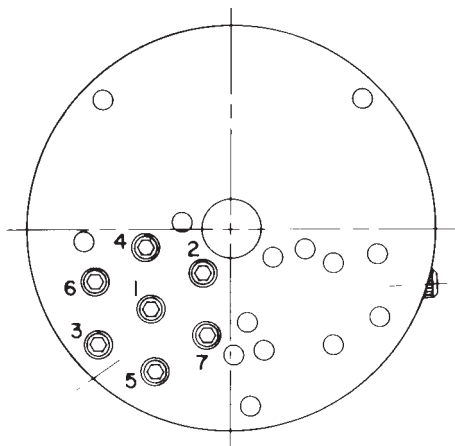
When replacing the needle bearings on the drive gear of the basic pump, the dimensions shown must be as specified.

Sheet No. 5 of 6

Rev. 1 Date: 2 Nov. 2000

33113 PUMP ASSEMBLY 3 Pistons - 9/32 Dia.

Item No.	Part No.	No. Req'd	Description
1	10442	1	Copper Washer (3/8 X 1/4 X 1/32)
2	10002	1	Soc. Hd. Cap Screw (1/4-20 UNC X 3/8" Lg.; Torque to 140/160 in. lbs.)
3	24549	6	Valve Guide
4	10445	6	Compression Spring (5/32" O.D. X 3/4" Lg.)
5	12223	7	Steel Ball (3/16" Dia.)
6	10023	7	Soc. Hd. Cap Screw (1/4-28 UNF X 1-1/2 Lg.; Torque to 170/180 in. lbs.; See note below)
7	50411	1	Top Plate
8	10519	1	Soc. Set Screw (1/4-20 UNC X 3/8 Lg.; Torque to 65/70 in. lbs.)
9	40630	1	Valve Head
10	41062	1	Pump Barrel
11	21628	3	Piston



BOLT TIGHTENING SEQUENCE

NOTE: Assemble in sequence shown.
Lubricate under head and on threads.
Torque to 180 in. lbs.