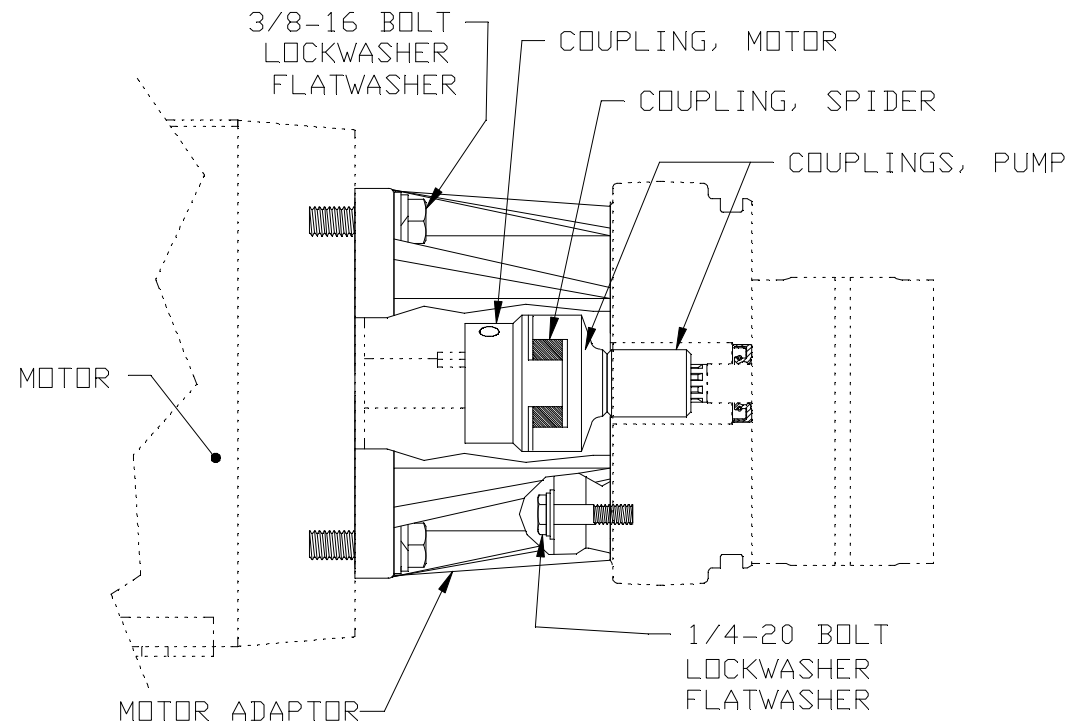


INSTALLATION INSTRUCTIONS ~~FORM 7~~



BEFORE ASSEMBLY:

1. CHECK THAT KIT CONTAINS THESE ITEMS:

QTY	DESCRIPTION	QTY	DESCRIPTION	QTY	DESCRIPTION
2	COUPLING, MOTOR	1	MOTOR ADAPTOR	4	1/4 WASHER
4	3/8-16 BOLT	4	3/8 LOCKWASHER	4	1/4-20 BOLT
3	COUPLING, PUMP	4	COUPLING, SPIDER	4	1/4 LOCKWASHER
		4	3/8 FLATWASHER		

2. CHECK THAT PUMP IS INSTALLED.

ASSEMBLY INSTRUCTIONS:

CAUTION

1. THE FLATWASHER MUST BE BETWEEN LOCKWASHER AND PLASTIC ADAPTOR. OVERTIGHTING WILL CRACK ADAPTOR.

ATTACH MOTOR ADAPTOR TO ENDHEAD WITH FOUR 1/4 -20 BOLTS, LOCKWASHERS, AND FLATWASHERS, TIGHTEN TO 5 FT LBS.

2. DETERMINE WHICH MOTOR COUPLING FITS YOUR MOTOR AND WHICH PUMP COUPLING IS NEEDED TO PROVIDE THE CORRECT LENGTH.
3. ASSEMBLE CORRECT COMBINATION OF PUMP COUPLINGS, CORRECT MOTOR COUPLING AND COUPLING SPIDER TOGETHER, BACK OUT SETSCREW.
4. PLACE COUPLING ASSEMBLY ONTO MOTOR SHAFT WITH KEY INSTALLED IN KEYWAY.
5. INSERT MOTOR INTO ADAPTOR, ENGAGING COUPLING WITH PUMP SHAFT. FASTEN MOTOR TO ADAPTOR WITH 3/8-16 BOLTS, FLATWASHERS, AND LOCKWASHERS, AND TIGHTEN TO 10 FT LBS.
6. THRU ADAPTOR SLOT, TURN SHAFT TO SETSCREW, AND PUSH WHOLE COUPLING TOWARDS PUMP UNTIL IT STOPS. TIGHTEN ALLEN SCREW.

RECOMMENDED NEXT STEP:

1. INSTALL INTEGRAL VALVES.

CHECK	DATE	DWG NO.
		3120-BA

REV
B

FORM SIZE: 8-1/2 X 5-1/2