



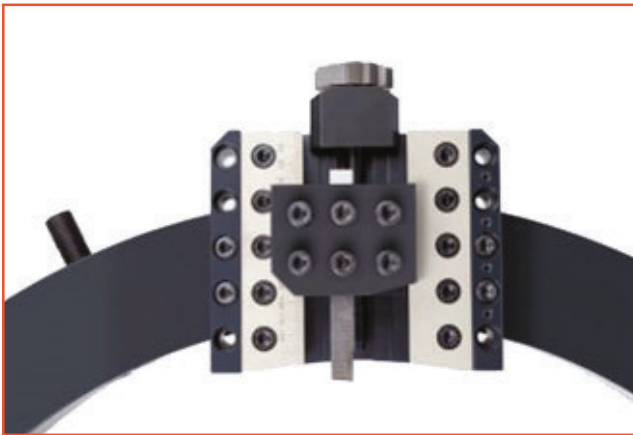
# BOLTING SYSTEMS™

HYDRAULIC TECHNOLOGIES

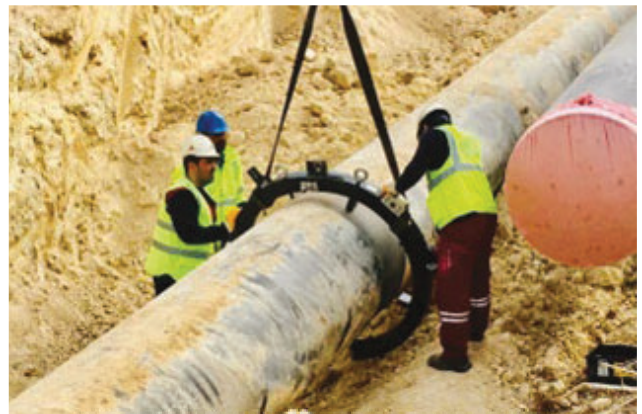
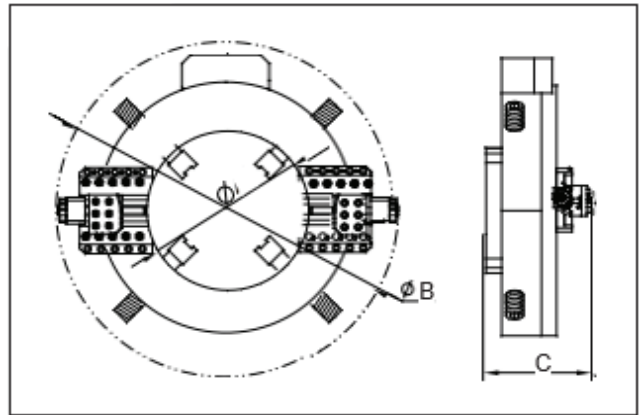
## CS - CLAMSHELL

### Features

- 12 standard models from 2"-36" cutting range
- Split-Frame design for easy mounting
- Pneumatic, electric, and hydraulic drive options available
- Ideal for beveling, facing or counterboring pipe or tubing
- Wide range of accessories to meet most applications
- Larger and customizable sizes available



ORDERING INFORMATION					
MODEL	in (mm)	WORKING RANGE	A	B	C
HT-CS6		2-6	7.28	20.16	7.56
		(50-168)	(185)	(512)	(192)
HT-CS8		2-8	9.29	22.20	7.56
		(50-230)	(236)	(564)	(192)
HT-CS10		4-10	11.14	24.09	7.56
		(114-275)	(283)	(612)	(192)
HT-CS12		6-12	13.15	26.18	7.56
		(168-325)	(334)	(665)	(192)
HT-CS14		8-14	15.20	28.31	7.56
		(219-377)	(386)	(719)	(192)
HT-CS16		10-16	17.24	30.55	7.68
		(273-426)	(436)	(776)	(195)
HT-CS18		12-18	18.46	31.77	7.68
		(300-457)	(469)	(807)	(195)
HT-CS20		14-20	20.43	33.94	7.68
		(355-508)	(519)	(862)	(195)
HT-CS24		18-24	24.33	37.80	7.68
		(457-610)	(618)	(960)	(195)
HT-CS30		24-30	30.31	44.65	7.80
		(600-762)	(770)	(1134)	(198)
HT-CS36		30-36	36.38	51.02	8.43
		(762-914)	(924)	(1296)	(214)



Hydraulic Technologies, reserves the right to incorporate our latest design and material changes without notice or obligation. Design features, materials of construction and dimensional data, as described in this bulletin, are provided for your information only and should not be relied upon unless confirmed in writing. Please contact your local sales representative for product availability in your region.

visit [www.hydraulictechnologies.com](http://www.hydraulictechnologies.com)



BS\_CLAMSHELL\_0626\_A4