

PANCAKE LOCKING COLLAR CYLINDERS

RGP Series — Single acting, pancake locking collar
Ideal for heavy lifting in confined spaces



PANCAKE LOCKING COLLAR CYLINDERS

SAFETY AND DURABILITY FOR YOUR HEAVY LIFTING

Hydraulic Technologies brand Power Team specializes in high-pressure hydraulic technology. Through a broad range of leading-edge component parts, accessories and tools, Power Team enables the creation and upkeep of concentrated force delivery solutions that can meet any application criteria.

Pancake locking cylinders are ideal for tight quartered locations.

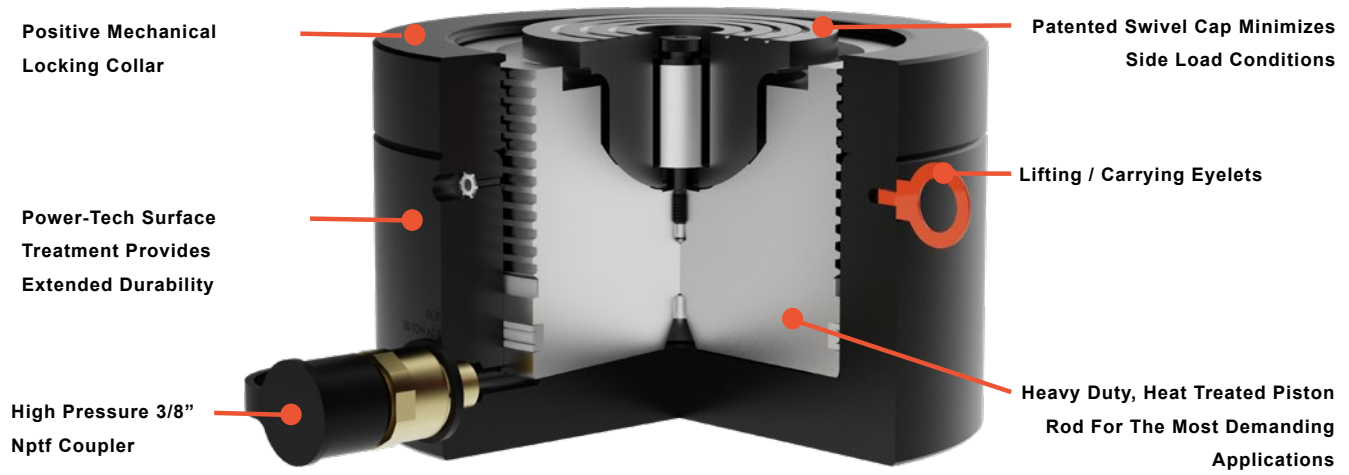


Power Team's RGP Series of construction pancake cylinders are ideal for applications that require lifting in tight or confined spaces, such as bridge bearings on end caps or piers. The RGP Series is available with lifting capacities from 55 – 565 Tons (60,8 – 512,6 Tonne).

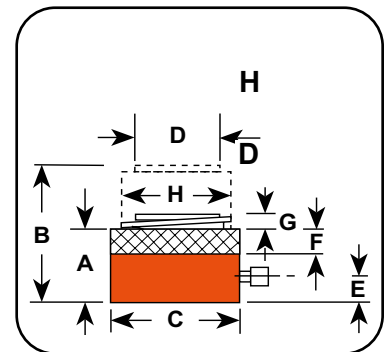
Overview

- **Mechanical locking collar** safely supports loads for an extended period of time removing the chance of a hydraulic leak down causing a load shift.
- **Patented 5 degree deep swivel cap** concentrates loads to minimize offset conditions.
- **Buttress thread design** supports locking collar strength and security along with time saving quick run-down.
- **Power-Tech nitrocarburization surface treatment** inhibits corrosion and provides exceptional durability.
- **Weep hole** provides visual indication of piston over travel.

Single Acting, Pancake Locking Collar



NOTICE: When selecting a hydraulic cylinder(s) capacity and stroke, Power Team recommends that you size to 80% of the maximum rated capacity and stroke for the application - known as the "80% Rule". This will ensure additional safety factor and extend the product performance over time.



Ton.	Stroke	Order No.	A	B	C	D	E	F	G	H	CYL. EFF. AREA (ADV.)	Oil Cap.	Internal Press At Cap.	Wt. W/O Oil
			Ret. Height	Ext. Height	DIA.	BORE DIA.	BASE TO PORT	NUT THICK.	SWVL CAP PROT.	SWVL CAP DIA.				
US	IN.		IN.	IN.	IN.	IN.	IN.	IN.	IN.	IN.	SQ. IN.	(CU. IN.)	(PSI)	(LBS.)
67	1.75	RGP672	4.78	6.53	5.80	4.13	0.86	0.88	0.03	2.78	13.36	23.39	10,027	33.5
110	1.75	RGP1102	5.21	6.96	7.00	5.38	0.89	1.13	0.04	3.87	22.69	39.71	9,696	52.3
180	1.75	RGP1802	5.82	7.57	9.00	6.75	1.05	1.38	0.10	4.63	35.78	62.62	10,060	97.2
220	1.75	RGP2202	6.17	7.92	10.00	7.50	1.11	1.60	0.10	5.37	44.18	77.31	9,960	127.2
280	1.75	RGP2802	6.27	8.02	11.00	8.50	1.20	1.65	0.10	5.56	56.74	99.30	9,869	155.2
430	1.75	RGP4302	7.00	8.75	14.00	10.50	1.55	1.88	0.10	6.66	86.59	151.53	9,932	282.5
565	1.75	RGP5652	7.60	9.35	16.00	12.00	1.84	2.10	0.25	7.77	113.09	197.91	9,992	398.7

CUSTOMER SERVICE CENTERS

Rockford, Illinois USA
5885 11th Street
Rockford, IL 61109 USA
Tel: +1 800 541 1418
Fax: +1 800 288 7031
info.powerteam@spxflow.com

Gonzales, Louisiana USA
3141 S. Darla Avenue
Gonzales, LA 70737 USA
Tel: +1 225 774 0888
info@spxboltingsystems.com

Houston, Texas USA
3106 E Pasadena Freeway,
Pasadena, TX 77503 USA
Tel: +1 713 472 2500
info@spxboltingsystems.com

Corpus Christi, Texas USA
4930 Gemini Street,
Corpus Christi, TX 78405 USA
Tel: +1 361-445-3727
info@spxboltingsystems.com

Europe
Albert Thijsstraat 12
6471 WX Eyselshoven
The Netherlands
Tel: +31 45 567 8877
cs.emea@spxflow.com

India
Power Team Hydraulic Technologies
India Private Limited
Odhav, Ahmedabad - 382 415
Tel: +91 99099 85454
Fax: +91 97277 19950
ft.apac.ht@spxflow.com

South East Asia
Power Team Hydraulic Technologies
Singapore Pte. Ltd.
2 Bukit Batok Street 23,
#02-07 Bukit Batok Connection,
Singapore 659554
Tel: +65 6265 3343
singapore@spxboltingsystems.com

China
Hydraulic Technologies China Ltd.
No 666, Fengjin Road, Xidu Industrial
Park Fengxian District,
Shanghai 201401, China
Tel: +86 021 2208 5659
Fax: +86 21 2208 5682
china@spxboltingsystems.com

Australia
Hydraulic Technologies
Australia Pty Ltd,
211 Atlantic Drive, Keysborough,
Victoria 3173, Australia
Tel: +613 9589 9215
Fax: +61 02 9763 7888
ft.apac.ht@spxflow.com

Hydraulic Technologies reserves the right to incorporate our latest design and material changes without notice or obligation. Design features, materials of construction and dimensional data, as described in this bulletin, are provided for your information only and should not be relied upon unless confirmed in writing. Please contact your local sales representative for product availability in your region. For more information,