

Americas

Tel: +1 800 541 1418
info.amer@hytec.com

Europe

Tel: +31 45 567 8877
info.emea@hytec.com

Asia Pacific

Tel: +86 021 2208 5659 (China)
Tel: +61 02 9763 4900 (Australia)
Tel: +65 6265 4366 (Singapore)
info.apac@hytec.com

Bolting Rental

Tel: 1-713-472-2500 (Pasadena, TX)
Tel: 1-361-445-3727 (Corpus Christi, TX)
Tel: 1-225-774-0888 (Gonzales, LA)
bolting.amer@hytec.com

Rail Systems

Tel: +44 208 526 7100
info.rail@hytec.com

Bolting Rental

Tel: +65 6265 4366
bolting.apac@hytec.com

Hydraulic Technologies reserves the right to incorporate our latest design and material changes without notice or obligation. Design features, materials of construction and dimensional data, as described in this bulletin, are provided for your information only and should not be relied upon unless confirmed in writing. Please contact your local sales representative for product availability in your region for more information.

Distributed by:



stonehydraulics.com



Compact Power, Proven Performance

Power in a Compact Package

Stone Hydraulics has built a legacy on delivering reliable, compact hydraulic power units that are trusted across industries. Known for their rugged performance and space-saving design, Stone products are engineered to provide maximum power in minimal space—ideal for mobile equipment, industrial machinery, and custom applications where efficiency and dependability matter most.

Modular by Design

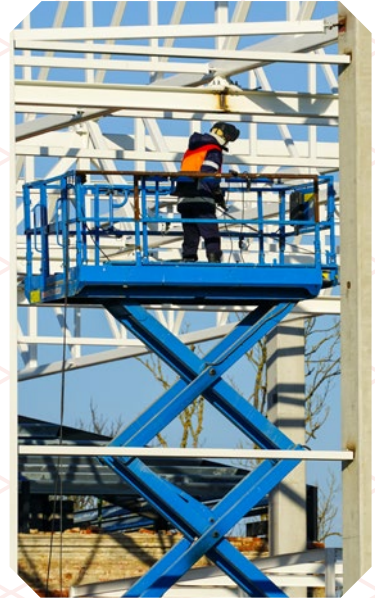
At Stone's core is a modular design philosophy that allows for flexibility without compromising performance. Each component is thoughtfully engineered for compatibility, giving users the ability to configure power units to fit their exact requirements. Whether you need a standard solution or something highly specific, Stone offers scalable options that meet your goals.

Built to Perform, Engineered to Last

From motor and pump assemblies to reservoirs and integrated valve systems, Stone Hydraulics products are built to withstand tough operating environments. Our focus on durability, quality components, and simplified serviceability means you can count on long-term performance with minimal downtime—reducing maintenance costs and maximizing uptime.

A Partner in Your Success

Stone is more than just a product line—it's a team of engineers, application specialists, and problem-solvers committed to helping you succeed. Whether you're designing new machinery or upgrading an existing system, we're here to provide responsive support and custom solutions that drive results. With Stone, you don't just get power—you get partnership.



OEM Solutions Custom Pump solutions

Hydraulic Technologies offers OEM solutions designed to align with your brand and performance needs. From custom labeling, packaging, and paint to application-specific modifications, we help your equipment stand out while meeting demanding operational requirements. Our expert team partners with you to deliver tailored, high-performance solutions backed by industry-leading experience and technology—ensuring your hydraulic systems exceed expectations and build lasting customer loyalty.

Product Overview



Pick-A-Pack Components

- Highly modular kits customers can mix & match.
- Allows for quick power unit arrangements.
- Ideal for flexible, varied applications.

Configurability



Uniqueness



Semi-finished Power Units

- Partially complete units that allow moderate customization.
- 12VDC motor, endhead, and common valve circuit for a array of applications.
- Enables a reservoir kit ranging from 2qt.- 14gal.

Configurability



Uniqueness



Purpose Built Power Units

- Turnkey assembled AC/DC motor with specific valve configurations for a variety of specific applications.
- Tailored for defined tasks with strong performance in focused environments.

Configurability



Uniqueness



OEM Customer Specific Units

- Built-to-spec solutions developed for integration into third-party systems.
- Wide range of AC/DC powered solutions to fit your application needs.
- Unique part number and labeling options.

Configurability



Uniqueness



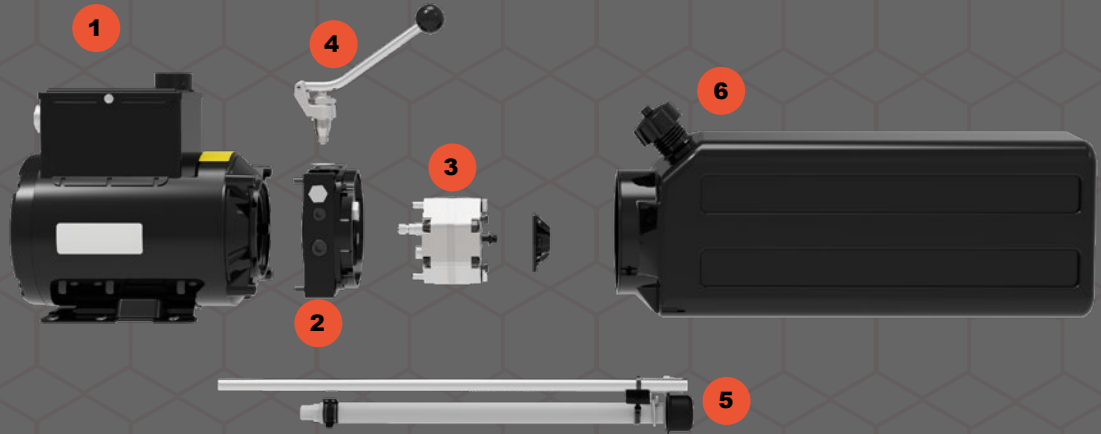
Pick-A-Pack

The Stone Pick-A-Pack product range is based on a system of modular construction which was pioneered by Stone Hydraulics when the company was founded in 1968. This concept and the components utilized have been continuously refined and improved through the years. Today, Stone applies the most advanced manufacturing technologies and the highest quality materials and components available to provide this unique and extremely flexible product range.

All of the components in the Pick-A-Pack product range are designed to be interchangeable with mating components. All components are modular in design and the "International" endhead is the key component of this interchangeable system. Any desired combination of drive motor, pump, reservoir, and control valving can be either assembled into or manifolded onto this endhead. This is available in three configurations, with either NPTF, SAE, or BSPP porting.

6 Easy Steps

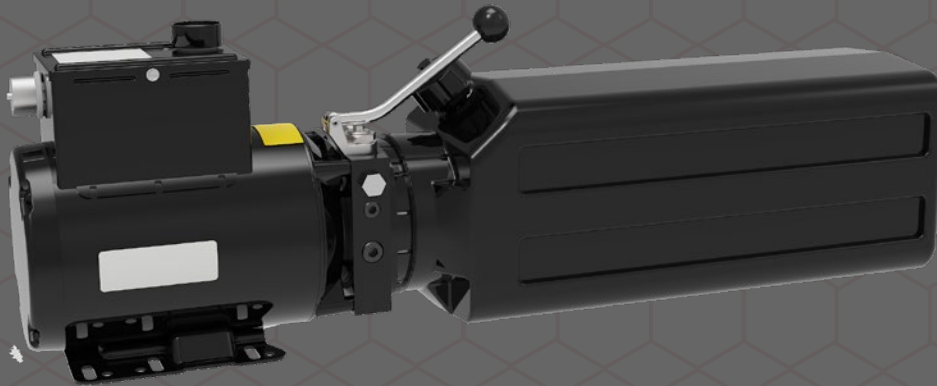
- 1- Select a motor
- 2- Select a endhead
- 3- Select a pump
- 4- Select valving
- 5- Select Plumbing
- 6- Select Reservoir



How it adds up

Once the selections have been made to build out your customized Pick-a-Pack pump, the unit is assembled and ready to put to work—tailored to meet your specific application needs. Take this example: the featured Pick-a-Pack pump was engineered to operate a heavy-duty hydraulic auto hoist. Designed with performance, reliability, and compatibility in mind, this unit includes components precisely matched to the hoist's lifting requirements.

That's the beauty of the Pick-a-Pack system—it's not just a pump, it's a modular solution. Whether you're powering an automotive lift, a material handling system, or industrial equipment, Stone Hydraulics gives you the flexibility to configure a power unit that fits the job. With a wide range of valves, reservoirs, motors, and pump combinations, you can build a compact, efficient system that integrates seamlessly into your operation—no matter the application.



Pick-A-Pack

1. Motor Selection

- 3" DC Motors
- 4.5" DC Motors
- High Power DC Motors
- NEMA C AC Motors (Customer Supplied)
- AC Motors
- Adapters

2. Endhead Selection

- Metric Foot mounts with SAE or BSPP Ports
- UNC Foot mounts with SAE or NPT Ports

3. Pump Selection

- Pumps
- HI-LO Pumps
- Unload Valve Assembly

1



2



3



4



5



6



Pick-A-Pack

4. Valving

- Relief Valve-Only Kit
- Relief and Check Valve Kit
- Relief, Check, Manual NC, Valve Kit
- Relief, Check, 12VDC, 24VDC, 115VAC, 230VAC, Solenoid NC Valve Kit
- Flow Control

5. Plumbing

- Vertical Inlet Plumbing
- Horizontal Inlet Plumbing

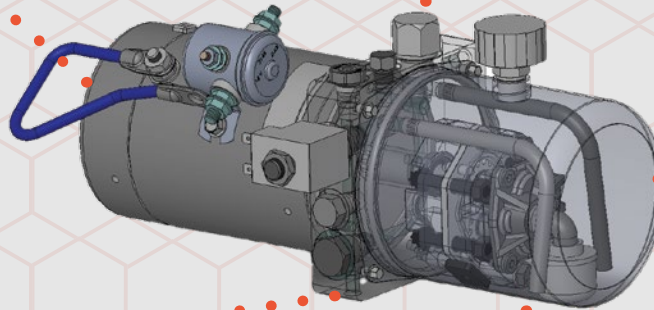
6. Reservoir

- Steel Reservoir 4.75" (120mm) Diameter
- Steel Reservoir 6.7" (170mm) Offset
- Plastic Reservoir 5.0" (127 mm) Square
- Plastic Reservoir 6.7" (170 mm) Offset
- Industrial Reservoir

Modular High Quality AC & DC Hydraulic Power

Motors offer unique benefits to the market. AC and DC versions are available in a wide range of voltages and duty cycles. Each motor is equipped with a spine shaft to increase connection point durability. (DC Motor Shown)

Valves are available in solenoid or manual actuation. Industry standard cartridge valves ensure system versatility.



Reservoirs are available in steel or plastic configurations with capacities from 2 Qt to 14 gallon.

Universal End Head design offers easy adaptability for most combination pumps, motor, reservoir, and valve assemblies.

Gear pumps are equipped with 13-tooth gears that have precision fixed clearances. Designed with hardened and ground sintered gears in high tensile strength housings.

OEM Solutions

At the heart of Stone Hydraulics' OEM offerings is their modular design approach. This methodology allows for the customization of hydraulic power units by selecting from a variety of components, including motors, pumps, reservoirs, valves, and plumbing. Such flexibility ensures that each solution is precisely matched to the specific technical and budgetary requirements of the application, whether it's for automotive lifts, material handling systems, or industrial machinery. Stone Hydraulics' commitment to OEMs is further reinforced by their dedicated application engineering team. These experts collaborate closely with clients to understand their unique challenges and recommend optimal solutions that deliver maximum value and performance. This collaborative approach ensures that OEMs receive not only high-quality components but also the technical support necessary for successful integration and operation.



Semi-Finished DC Units

Partially Assembled

DC-10SF

- 12V DC Manual Operated
- Power Up/Gravity Down

DC-20SF

- 12V DC Solenoid Operating
- Power Up/Gravity Down

DC-30SF

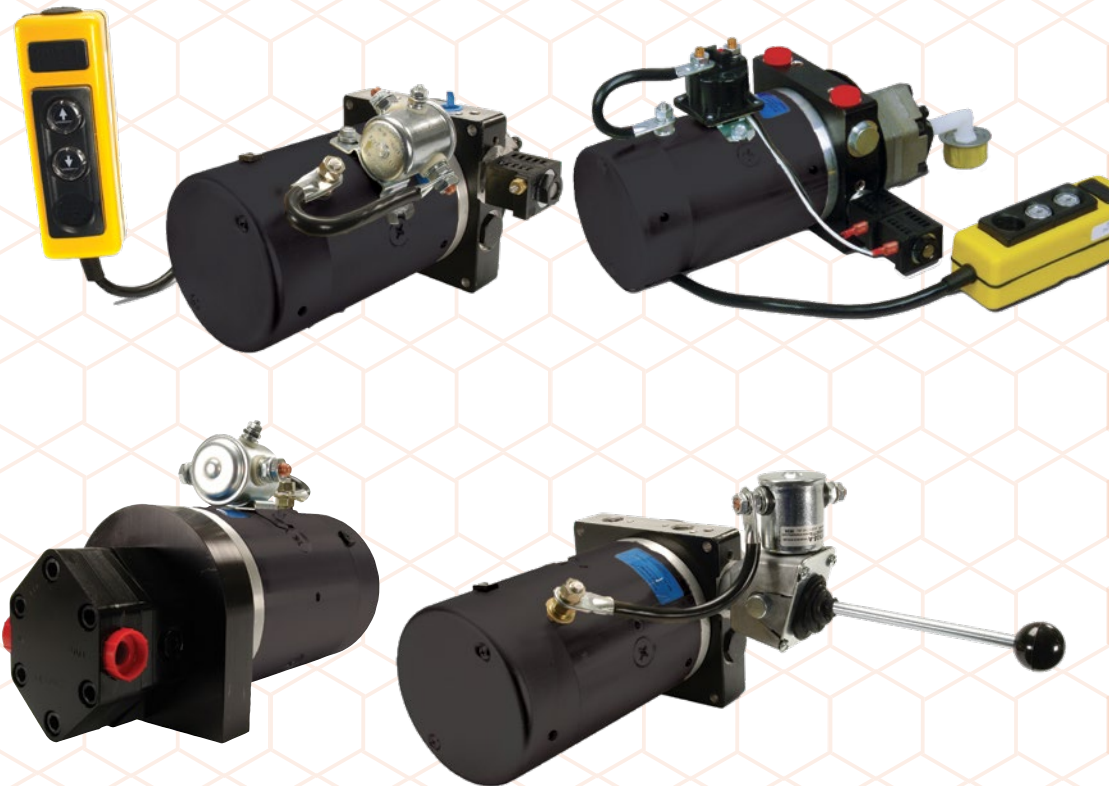
- 12V DC Check and Relief Valve
- Power Unit

DC-60SFC

- 12V DC Solenoid Operating
- Power Up/Power Down

DC-90SF

- 12V DC Relief Valve Only



Purpose-Built Units

Fully Assembled

AC-10AH

- 230VAC 1PH Auto Hoist 2-Post Lift
- Power Up/Gravity Down

AC-10FP-A

- 230VAC 1PH Auto Hoist 4-Post Lift
- Power Up/Gravity Down

AC-10TC

- 115VAC 1PH Tire Changer
- Power Up/Gravity Return

AC-40FC

- 115VAC 1PH Filter Crusher
- Power Extend/Gravity Return

DC-24MH

- Material Handling Solenoid Operated
- Power Up/Gravity Down

DC-70BS

- Bale Spike Power Unit

DC-80SPC

- 12VDC Snow Plow Solenoid Operated
- Power Angle & Lift/Gravity Down

stonehydraulics.com